

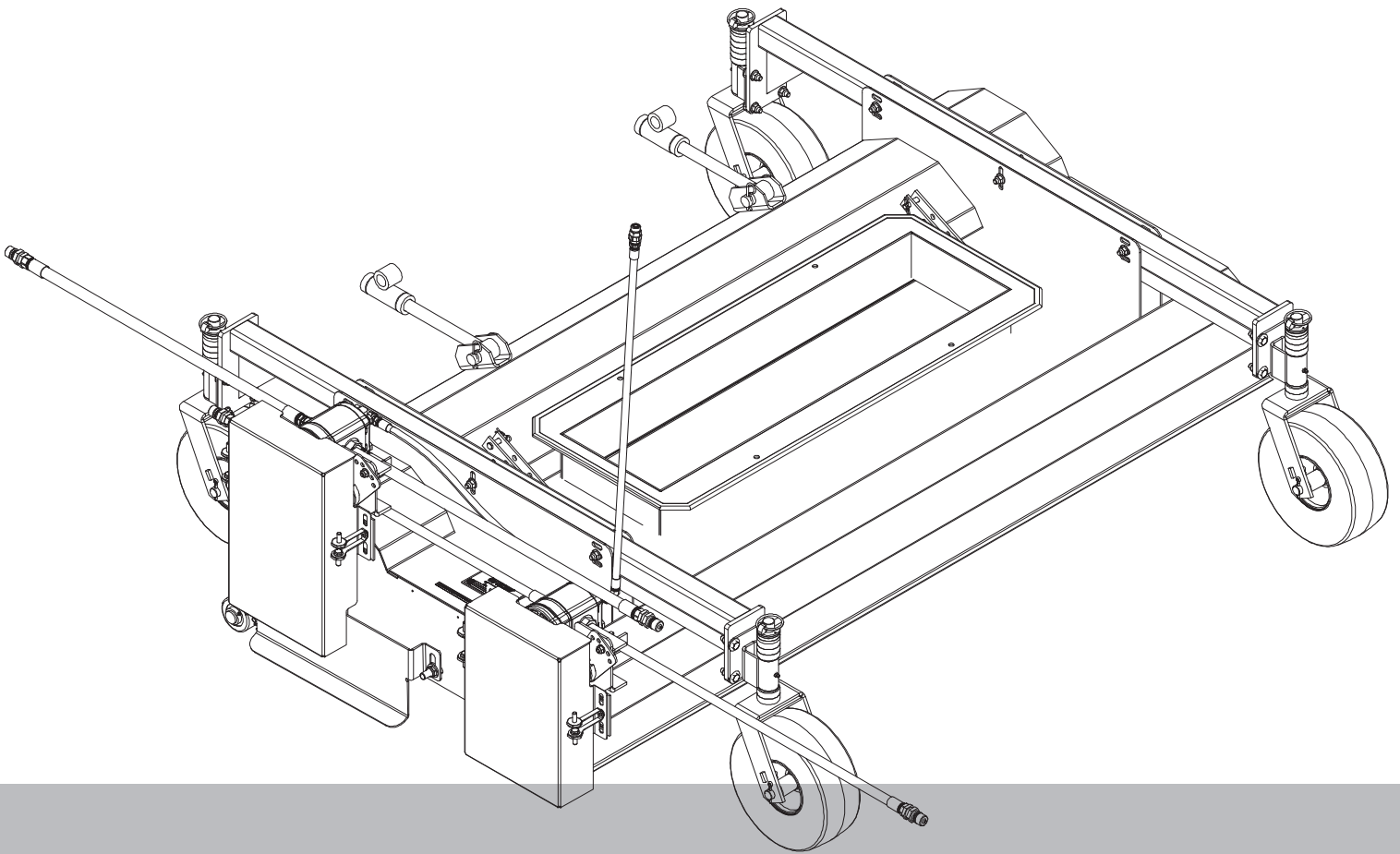
# VVAC COMBO DECK

---

Serial Number: 25A01

Model Number: 7082

Manual PN: 900291



## *OPERATOR'S MANUAL*



**Thank you for purchasing a Versa Vac Combination Deck.**

**TO THE OWNER OR OPERATOR:**

This manual gives assembly, operating, and service information for model VVAC Combination Deck **7082**. Please read and understand all instructional material included with the Combo Deck and its components before assembling and operating the equipment. This machine is intended to be used by professional, hired operators in commercial applications. The primary function of the machine is to remove debris from large turf areas. The movable tongue provides an offset position for sweeping.

A Combo Deck can present hazards to an operator who follows unsafe procedures in either the operation or maintenance of the unit. Therefore, **SAFETY WARNINGS** are presented at certain locations in the text.

**SYMBOL:**



**SAFETY WARNING!**



**MEANING:** Failure to understand and obey this warning may result in injury to you or others. Whenever this symbol is used, please pay very close attention to the information presented, and make sure you fully understand. If you do not, contact your dealer or Harper Industries for clarification.



**SAFETY WARNING!**



**All shields and guards must be in place for proper and safe operation of this equipment. Where they are shown removed in this manual, it is for purposes of illustration and instruction only. Do not operate this equipment unless all shields and guards are in place.**

Harper Industries, Inc. is continually striving to improve the design and performance of its products. We reserve the right to make changes in specifications and design without thereby incurring any obligation relative to previously manufactured products.

© 2025 Harper Industries, Inc.

The Harper name is a registered trademark of Harper Industries, Inc. All other brand and product names are trademarks or registered trademarks of their respective companies.

## LIMITED WARRANTY

Harper Industries, Inc. (HII) warrants to each purchaser of a new Harper Combination Deck from an authorized dealer or representative, that such equipment is free of manufacturer's defects in workmanship and materials which appear while in normal service for a period of ONE YEAR commencing with delivery to the original user.

The obligation of HII under this warranty is expressly limited, at our option, to replacement or repair at a service facility designated by Harper Industries or at the manufacturing plant in Harper, KS. A part will be replaced after inspection discloses it to have been defective. This warranty does not apply to defects caused by damage or unreasonable use (including failure to provide reasonable and necessary maintenance, or by performing functions without genuine Harper Versa Vac accessories) while in the possession of the consumer.

Warranty is limited to parts, labor and ground freight delivery of replacement parts. HII shall not be liable for the consequential damages of any kind, including but not limited to consequential labor costs or transportation charges in connection with replacement or repair of defective parts.

This warranty does not apply to parts subjected to misuse, abuse, alteration, improper or inadequate maintenance, or normal wear (including belts, battery, chains, filters, knives, brush and broom).

Engines are not covered under this warranty. Refer to manufacturer's warranty for specific warranty information. Harper Industries, its agents or representatives, make or imply no other warranties.

Harper Industries makes no warranty with respect to trade accessories. They are subject to the warranties of their respective manufacturers.

ANY IMPLIED OR STATUTORY WARRANTIES, INCLUDING ANY WARRANTY OR MERCHANTABILITY OR FITNESS FOR A PARTICULAR PURPOSE, ARE EXPRESSLY LIMITED TO THE DURATION OF THIS WRITTEN WARRANTY. HII makes no other express warranty, nor is anyone authorized to make any on behalf of HII.

For further information please contact your nearest Harper Turf Equipment dealer.

## RECORDS

Date of Purchase \_\_\_\_\_ / \_\_\_\_\_ / \_\_\_\_\_

Dealer's Name \_\_\_\_\_

Dealer's Phone \_\_\_\_\_

Serial Number Machine \_\_\_\_\_

Serial Number Engine \_\_\_\_\_

This product complies with all relevant European directives. For details, please see the Declaration of Incorporation (DOI) at the back of this publication.

**⚠ WARNING**

**CALIFORNIA**

**Proposition 65 Warning**

**Use of this product may cause exposure to chemicals known to the State of California to cause cancer, birth defects, or other reproductive harm.**

This manual uses 2 words to highlight information.

**Important** calls attention to special mechanical information and **Note** emphasizes general information worthy of special attention.

## Introduction

This deck is to be used with the Versa Vac machine. This machine is intended to be used by professional, hired operators in commercial applications. The machine is designed to dethatch, renovate, and remove debris from large turf areas in 1 pass.

Read this information carefully to learn how to operate and maintain your product properly and to avoid injury and product damage. You are responsible for operating the product properly and safely.

Visit [www.harperturfequipment.com](http://www.harperturfequipment.com) for product safety and operation training materials, accessory information, help finding a dealer, or to register your product.

Whenever you need service, genuine Harper parts, or additional information, contact an Authorized Service Dealer or Harper Customer Service and have the model and serial numbers of your product ready. Write the numbers in the space provided.

Model No. \_\_\_\_\_

Serial No. \_\_\_\_\_

This manual identifies potential hazards and has safety messages identified by the safety-alert symbol (Figure 1), which signals a hazard that may cause serious injury or death if you do not follow the recommended precautions.



**Figure 1**  
Safety-alert symbol

Contact us at  
[www.harperturfequipment.com](http://www.harperturfequipment.com)  
Printed in the USA All  
Rights Reserved

# Table of Contents

<b>To the Owner or Operator.....</b>	<b>1</b>
<b>Warranty Statement.....</b>	<b>2</b>
<b>Introduction.....</b>	<b>3</b>
<b>Table of Contents.....</b>	<b>4</b>
<b>Safety</b>	
Safety and Instructional Decals .....	5
<b>Setup</b>	
Parts List.....	6
Mounting the Tow Arms.....	6
Mounting the Deck.....	7
Tire Pressure.....	7
<b>Product Overview</b>	
Specifications.....	8
Operational Safety (Pre-op).....	8
Adjust Operating Height.....	9
Operational Safety (During Op).....	10
Operational Tips.....	11
Post Operational Safety and Maintenance.....	11
<b>Maintenance</b>	
Recommended Maintenance Schedule.....	12
Maintenance Safety.....	12
Grease.....	12
Adjusting Drive Belts.....	13
Replacing Finger Belts.....	14
Replacing Flail Knives.....	15
California Prop 65.....	16

# Safety

## General Safety

This product is capable of amputating hands and feet and of throwing objects. Always follow all safety instructions to avoid serious personal injury.

Using this product for purposes other than its intended use could prove dangerous to you and bystanders.

- Read and understand the contents of this *Operator's Manual* before using the machine.
- Do not put your hands or feet near moving components of the machine.
- Do not operate the machine without all guards and other safety protective devices in place and functioning properly on the machine.
- Keep clear of any discharge opening. Keep bystanders and pets away from the machine.

- Keep children, bystanders, and pets out of the operating area. Never allow children to operate the machine.
- Always shut off the engine of the traction unit, remove the key (if equipped), wait for all moving parts to stop, and allow the machine to cool before adjusting, servicing, cleaning, or storing the machine.

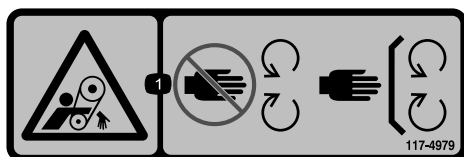
Improperly using or maintaining this machine can result in injury. To reduce the potential for injury, comply with these safety instructions and always pay attention to the safety-alert symbol ▲, which means Caution, Warning, or Danger—personal safety instruction. Failure to comply with these instructions may result in personal injury or death.

You can find additional safety information where needed throughout this *Operator's Manual*.

## Safety and Instructional Decals



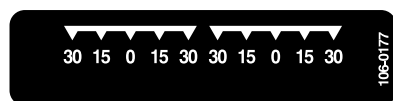
Safety decals and instructions are easily visible to the operator and are located near any area of potential danger. Replace any decal that is damaged or lost.



decal117-4979

117-4979

1. Entanglement hazard, belt—keep away from moving parts; keep all guards and shields in place.



decal106-0177

106-0177



decal106-0178

106-0178



decal106-0188

106-0188

1. Cutting hazard of hand or foot—wait for moving parts to stop.

**WARNING:** Cancer and Reproductive Harm - [www.P65Warnings.ca.gov](http://www.P65Warnings.ca.gov).

202134

# Setup

## Loose Parts

Use the chart below to verify that all parts have been shipped.

Procedure	Description	Qty.	Use
<b>1</b>	Tow arm	2	Mount the tow arms.
	Clevis pin	2	
	Cotter pin	2	
<b>2</b>	Washer	2	Mount the combination deck.
	Hairpin cotter	4	
	Clevis pin	2	
<b>3</b>	No parts required	—	Check the tire pressure.

# 1

## Mounting the Tow Arms

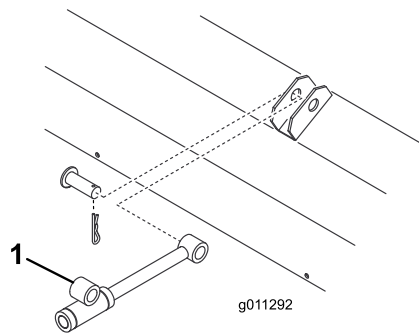
Parts needed for this procedure:

2	Tow arm
2	Clevis pin
2	Cotter pin

## Procedure

Mount the tow arms to the front of the deck with the 2 clevis pins and 2 cotter pins.

**Note:** Position the tow arms as shown in [Figure 2](#).



**Figure 2**

1. Tow arm



# 2

## Mounting the Combination Deck

Parts needed for this procedure:

2	Washer
4	Hairpin cotter
2	Clevis pin

### Procedure

1. Roll the deck under the machine.

**Note:** Make sure that the flail is positioned toward the front of the machine.

2. Slide the tow arms onto the frame pins. Secure each tow arm to the frame pin with a washer and hairpin cotter (Figure 3).

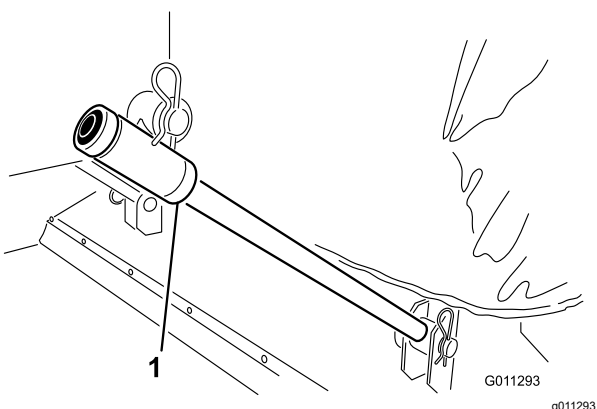


Figure 3

1. Tow arm

3. Connect each lift chain to a deck bracket with a clevis pin and hairpin cotter (Figure 4).

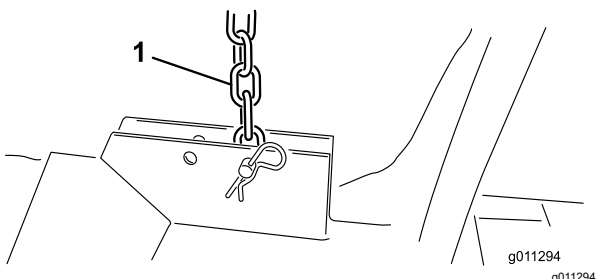


Figure 4

1. Lift chain

4. Install the canvas ring around the lip on the machine and deck openings (Figure 5).

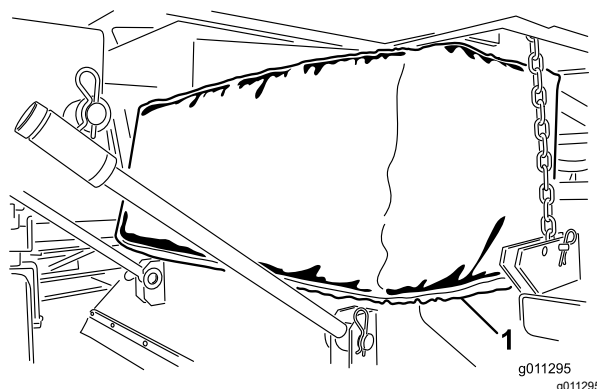


Figure 5

1. Canvas ring

5. Connect the hydraulic motor hose quick couplers to the machine couplers as shown in Figure 5.

**Note:** Verify that the fingers rotate clockwise (as viewed from the motor end of the deck).

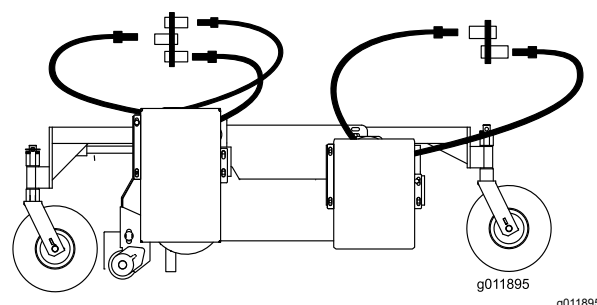


Figure 6

**Note:** If the deck is not level when you raise it, reposition the lift chain in another mounting hole in the bracket.

# 3

## Checking the Tire Pressure

No Parts Required

### Procedure

The correct tire pressure for the castor wheels is 207 kPa (30 psi).

# Product Overview

## Specifications

Deck width	198 cm (78 inch)
Deck height	51 cm (20 inch)
Net weight	327 kg (720 lb)

## Attachments/Accessories

A selection of HII approved attachments and accessories is available for use with the machine to enhance and expand its capabilities. Contact your Authorized Service Dealer or Distributor or go to [www.harperurfequipment.com](http://www.harperurfequipment.com) for a list of all approved attachments and accessories.

To ensure optimum performance and continued safety certification of the machine, use only genuine HII replacement parts and accessories. Replacement parts and accessories made by other manufacturers could be dangerous, and such use could void the product warranty.

# Operation

**Note:** Determine the left and right sides of the machine from the normal operating position.

## *Before Operation*

## Before Operation Safety

### General Safety

- Never allow children or untrained people to operate or service the machine. Local regulations may restrict the age of the operator. The owner is responsible for training all operators and mechanics.
- Become familiar with the safe operation of the equipment, operator controls, and safety signs.
- Know how to stop the machine and shut off the engine quickly.
- Do not operate the machine without all guards and other safety protective devices in place and functioning properly on the machine.
- Ensure that all hydraulic line connectors are tight, and all hydraulic hoses and lines are in good condition before applying pressure to the system.
- Before operating, always inspect the machine to ensure that the flail knives are in good working condition. Replace worn or damaged knives.
- Inspect the area where you will use the machine and remove all objects that the machine could strike.
- Ensure that your traction unit is suitable for use with an implement of this weight by checking with your traction unit supplier or manufacturer.

# Adjusting the Operating Height

The operating height is set at the factory for 13-mm (1/2 inch) high grass. You can adjust it from 13 to 76 mm (1/2 to 3 inches) by repositioning the castor-wheel spacers and relocating the capscrews that secure the castor beams to the height-adjustment plates.

1. Remove the capscrews, washers, and nuts securing a castor-assembly beam to the height-adjustment plates (Figure 7).

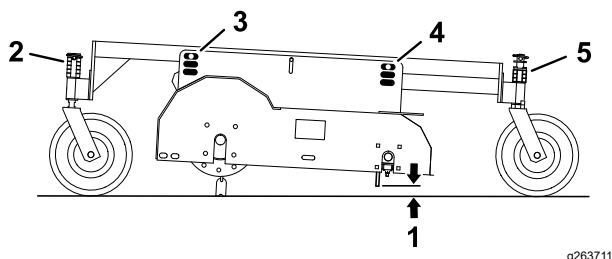


Figure 7

1. Grass height
2. Front castor
3. Front slots
4. Rear slots
5. Rear castor

2. Use the following table to determine which front and rear slots to use.

Front Castor	Height of cut	Back Castor
Set the deck at the <b>top</b> front slot and the <b>top</b> rear slot.		
2 spacers (1/2 inch)	13 mm (1/2 inch)	1 spacer (1/2 inch)
1 spacer (1/2 inch)	25 mm (1 inch)	3 spacers (1/2 inch)
1 spacer (1/4 inch)	38 mm (1-1/2 inch)	5 spacers (1/2 inch)
Set the deck at the <b>top</b> front slot and the <b>middle</b> rear slot.		
1 spacer (1/8 inch)	51 mm (2 inch)	4 spacers (1/2 inch) and 1 spacer (1/4 inch)
Set the deck at the <b>top</b> front slot and the <b>bottom</b> rear slot.		
No spacers	64 mm (2-1/2 inch)	4 spacers (1/2 inch)
No spacers	76 mm (3 inch)	5 spacers (1/2 inch) and 1 spacer (1/4 inch)

3. Use the front and rear slots to secure the castor-assembly beam to the height-adjustment plate with the capscrews, washers, and nuts previously removed.

**Note:** Position the washers outside the height-adjustment plates.

4. Repeat the procedure for the opposite side of the deck.

**Note:** Make sure that both castor assemblies are mounted at the same height.

5. Remove the clevis pin from the spindle shaft (Figure 8).

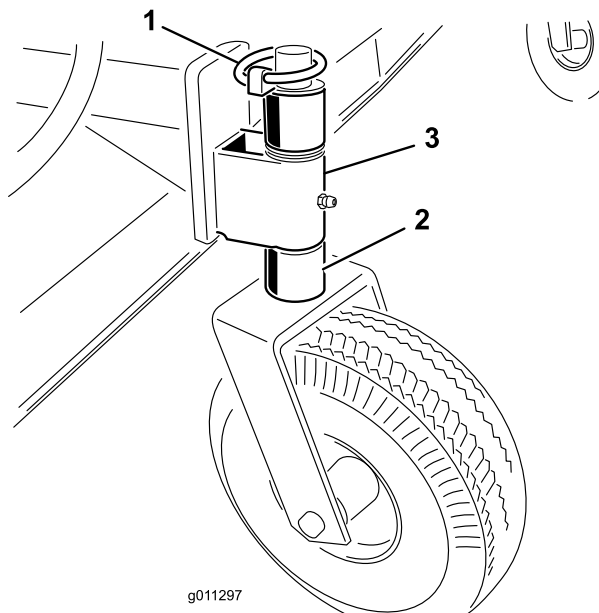


Figure 8

1. Clevis pin
2. Spacer
3. Castor arm

6. Remove or add C-shaped spacers to the spindle shaft, below the castor arm, to achieve the desired height (see table and Figure 8).
7. Place all remaining spacers on the spindle shaft above the castor arm.
8. Install the clevis pin to secure the assembly.
9. Repeat the procedure on the remaining castors.

# ***During Operation***

## **During Operation Safety**

### **General Safety**

- The owner/operator can prevent and is responsible for accidents that may cause personal injury or property damage.
- Wear appropriate clothing, including eye protection; slip-resistant, substantial footwear; long pants; and hearing protection. Tie back long hair and do not wear loose clothing or loose jewelry.
- Use your full attention while operating the machine. Do not engage in any activity that causes distractions; otherwise, injury or property damage may occur.
- Do not operate the machine when tired, ill, or under the influence of alcohol or drugs.
- Do not carry passengers on the machine and keep bystanders and pets away from the machine during operation.
- Always disengage the PTO, shut off the engine of the traction unit, remove the key, wait for all moving parts to stop, and allow the machine to cool before leaving the operator's position.
- The flail knives can pick up and propel debris and small objects in its path during operation. Always wear eye and head protection to avoid possible injury from flying objects, and keep children, pets, and bystanders away from the area of operation.
- Do not step over the PTO shaft to get to the other side of the machine. Walk around the machine.
- Always stand to the extreme right or left side of the machine when opening the rear door.
- Operate the machine only in good visibility to avoid holes or hidden hazards.
- Keep your hands and feet away from the flail knives.
- Look behind and down before backing up to be sure of a clear path.
- Stop the machine, shut off the engine, wait for all moving parts to stop, and inspect the machine after striking an object or if there is an abnormal vibration in the machine. Make all necessary repairs before resuming operation.
- Always maintain proper traction unit tire pressure.
- Ensure that you comply with all regulations before transporting equipment on the public roads and

highways. Make sure that all required reflectors and lights are in place and are clean and visible by overtaking and oncoming traffic.

- Reduce speed on rough roads and surfaces
- For all PTO shaft steel parts (tubes, bearings, joints, etc.) disassembly or repairs, it is highly advisable to contact your authorized HII distributor. Removal of components for repairs and reassembly may damage some parts if not performed with special tools by trained technicians.
- The PTO shaft must not be used without the guards supplied.

### **Slope Safety**

- Review the tow vehicle specifications to ensure that you do not exceed its slope capabilities.
- Slopes are a major factor related to loss of control and rollover accidents, which can result in severe injury or death. You are responsible for safe slope operation. Operating the machine on any slope requires extra caution.
- Evaluate the site conditions to determine if the slope is safe for machine operation including surveying the site. Always use common sense and good judgment when performing this survey.
- Review the slope instructions listed below for operating the machine on slopes and review the conditions to determine whether you can operate the machine in the conditions on that day and at that site. Changes in the terrain can result in a change in slope operation for the machine.
- Avoid starting, stopping, or turning the machine on slopes. Avoid making sudden changes in speed or direction. Make turns slowly and gradually.
- Do not operate a machine under any conditions where traction, steering, or stability is in question.
- Remove or mark obstructions such as ditches, holes, ruts, bumps, rocks, or other hidden hazards. Tall grass can hide obstructions. Uneven terrain could overturn the machine.
- Be aware that operating the machine on wet grass, across slopes, or downhill may cause the machine to lose traction. Loss of traction to the drive wheels may result in sliding and a loss of braking and steering.
- Use extreme caution when operating the machine near drop offs, ditches, embankments, water hazards, or other hazards. The machine could suddenly roll over if a wheel goes over the edge or the edge caves in. Establish a safety area between the machine and any hazard.

## Operating Tips

- Before operating the machine, survey the area to determine the best direction to operate.
- Test the performance of the machine before operating on formal turf. Adjust the operating height as desired.
- To maintain a straight line during operation, sight off an object in the foreground.
- Always try to make a long, continuous run with a slight overlap on the return run.
- On turf areas, the deck will pick up twigs, clippings, leaves, pine needles, pine cones, and small debris.

***Important:*** Do not make sharp turns when using the machine as damage to turf may occur.

***Important:*** Do not operate the machine while the rotor is turning and in the raised position.

## After Operation

### After Operation Safety

#### General Safety

- Keep all parts of the machine in good working condition and all hardware tightened.
- Replace all worn, damaged, or missing decals.

### Cleaning the Machine

After each use, thoroughly clean and wash the deck. After cleaning, inspect the machine for possible damage to mechanical components.

# Maintenance

## Recommended Maintenance Schedule(s)

Maintenance Service Interval	Maintenance Procedure
After each use	<ul style="list-style-type: none"><li>• Grease the machine.</li></ul>
Every 20 hours	<ul style="list-style-type: none"><li>• Check and adjust the drive belt.</li></ul>

## Maintenance Safety

- Before adjusting, cleaning, servicing, or leaving the machine, do the following:
  - Position the machine on a level surface.
  - Disengage the PTO.
  - Ensure that the traction unit is in neutral.
  - Engage the traction unit parking brake.
  - Shut off the engine of the traction unit and remove the key.
  - Wait for all moving parts to stop.
  - Allow machine components to cool before performing maintenance.
- Perform only those maintenance instructions described in this manual. If major repairs are ever needed or assistance is desired, contact an authorized HII distributor.
- Ensure that the machine is in safe operating condition by keeping hardware tightened.
- If possible, do not perform maintenance while the traction unit engine is running. Keep away from moving parts.
- Do not check or adjust the belt tension when the traction unit engine is running.
- Carefully release pressure from components with stored energy.
- Support the machine with blocks when working beneath it. Do not rely on a hydraulic system to support the machine.
- Check the roll pins daily to ensure that they secure the mounting pin to the rotor.
- Ensure that all guards are installed after maintaining or adjusting the machine.
- Seek immediate medical attention if fluid is injected into skin. Injected fluid must be surgically removed within a few hours by a doctor.
- Ensure that all hydraulic-fluid hoses and lines are in good condition and all hydraulic connections and fittings are tight before applying pressure to the hydraulic system.

- Keep your body and hands away from pinhole leaks or nozzles that eject high-pressure hydraulic fluid.
- Use cardboard or paper to find hydraulic leaks.
- Before disconnecting or performing any work on the hydraulic system, lower the implement to the ground and shut off the engine to relieve all pressure in the system.
- To ensure safe, optimal performance of the machine, use only genuine HII replacement parts. Replacement parts made by other manufacturers could be dangerous, and such use could void the product warranty.

## Greasing the Machine

**Service Interval:** After each use

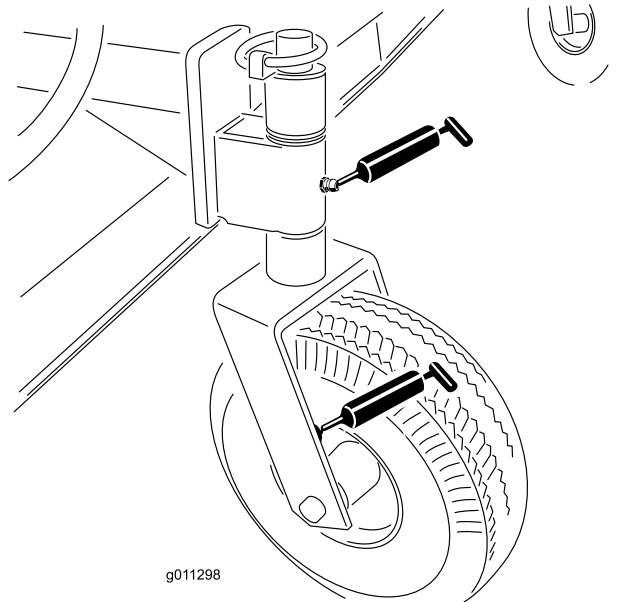
The deck has 12 grease fittings that must be lubricated regularly with a No. 2 general-purpose, lithium-based grease.

The grease fitting locations and quantities are as follows:

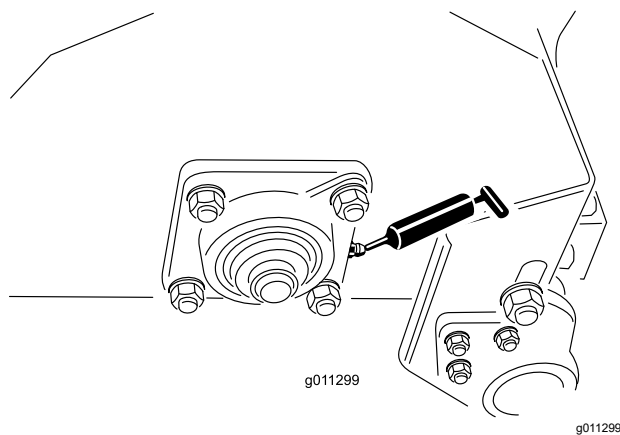
- Caster wheels (2 each) (Figure 9)
- Rotor bearings (4 each) (Figure 10)

**Important:** Lubricating the machine immediately after washing helps purge water out of the bearings and increases bearing life.

1. Wipe each grease fitting with a clean rag.
2. Apply grease until clean grease is seen coming out of the bearing seals.
3. Wipe excess grease away.



**Figure 9**



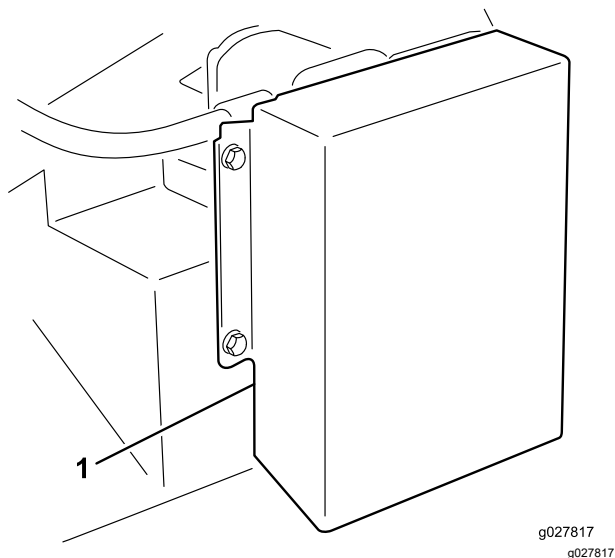
**Figure 10**

## Adjusting the Drive Belts

**Service Interval:** Every 20 hours—Check and adjust the drive belt.

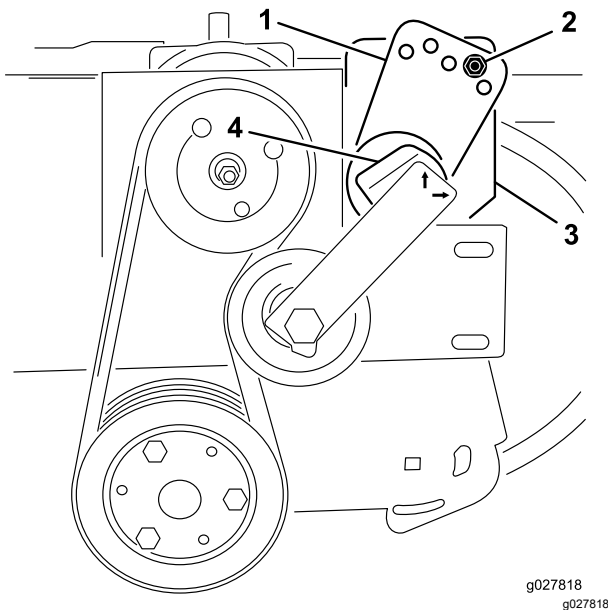
Make sure the belts are properly tensioned to ensure proper operation of the machine and unnecessary wear. If a belt squeals or slips, tighten it as follows:

1. Remove the fasteners securing the motor shield to the deck frame (Figure 11). Remove the shield.



**Figure 11**

1. Drive shield
2. On back side of the frame, loosen the bolt securing the belt tensioner to the frame (Figure 12).



**Figure 12**

- |                    |                         |
|--------------------|-------------------------|
| 1. Tensioner guide | 3. Bolt (back of frame) |
| 2. Bolt and nut    | 4. Tensioner            |

3. Remove the bolt and nut securing the tensioner guide to the drive mount (Figure 12).

**Note:** Removing the bolt will release the belt tension.

4. Using a large wrench, rotate the tensioner clockwise until the decal is aligned with 15° on the tensioner tube.
5. Insert the bolt into the aligned guide holes and secure it with the nut.

**Note:** If holes are not exactly aligned, rotate the guide to the next higher hole until aligned.

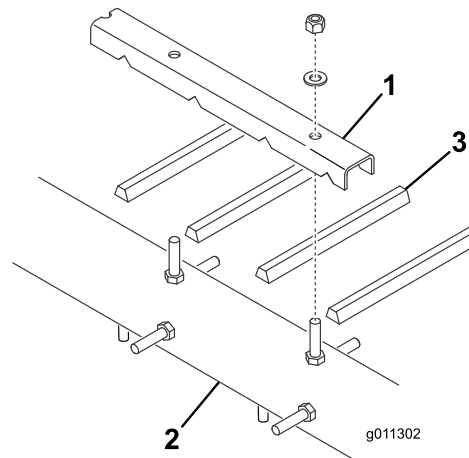
6. Tighten the bolt on the back side of the frame to lock the tensioner.
7. Install the motor shield with the fasteners previously removed..

## Replacing the Finger Belts

1. Loosen the nuts and washers securing the finger pinchers to the rotor (Figure 13 and Figure 14).
2. Remove the old belt fingers.
3. Install new belt fingers (Figure 13 and Figure 14).

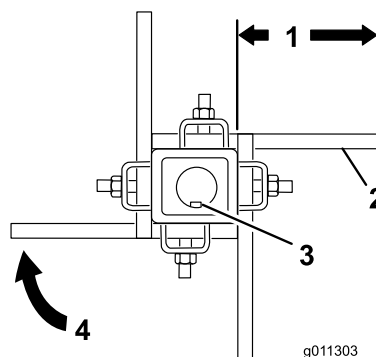
**Note:** Belt fingers extend from finger pinchers approximately 10 cm (4 inches).

4. Tighten the nuts securing the fingers.



**Figure 13**

- |                   |                |
|-------------------|----------------|
| 1. Finger pincher | 3. Belt finger |
| 2. Rotor          |                |



**Figure 14**

- |                                   |                   |
|-----------------------------------|-------------------|
| 1. Approximately 10 cm (4 inches) | 3. Keyed shaft    |
| 2. Flat side of the belt          | 4. Brush rotation |



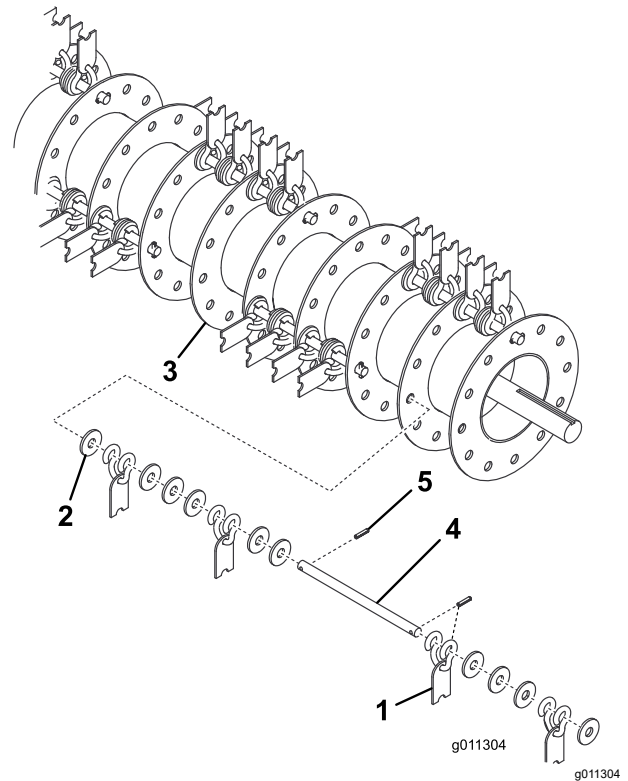
# Replacing the Flail Knives

Reverse or replace the flail knives when the edges become curved from wear.

1. Remove the roll pin securing the mounting pin to the flail rotor (Figure 15).
2. Slide the mounting pin from the rotor, allowing you to remove the flail knives and spacers.
3. Inspect the spacers and mounting pins for wear. Replace as necessary.
4. Assemble the flail knives as follows (Figure 15).
  - A. Starting at the end of the rotor, assemble a spacer and a flail knife, with hanger, and then assemble 3 more spacers (Figure 15).
  - B. Continue this pattern until the pin is full; secure the mounting pin to the rotor with the roll pin.
- C. Rotate the rotor 90° and continue the assembly for the next section.
- D. After completing the full length of the rotor, repeat the procedure on the opposite side of the rotor.

**Note:** Count the rotor flange as a spacer.

**Note:** Each section contains 4 flail knives, 4 knife hangers, and 10 spacers.



**Figure 15**

- |                           |                 |
|---------------------------|-----------------|
| 1. Flail knife and hanger | 4. Mounting pin |
| 2. Spacer                 | 5. Roll pin     |
| 3. Rotor                  |                 |

# California Proposition 65 Warning Information

## What is this warning?

You may see a product for sale that has a warning label like the following:



**WARNING: Cancer and Reproductive Harm—**[www.p65Warnings.ca.gov](http://www.p65Warnings.ca.gov).

## What is Prop 65?

Prop 65 applies to any company operating in California, selling products in California, or manufacturing products that may be sold in or brought into California. It mandates that the Governor of California maintain and publish a list of chemicals known to cause cancer, birth defects, and/or other reproductive harm. The list, which is updated annually, includes hundreds of chemicals found in many everyday items. The purpose of Prop 65 is to inform the public about exposure to these chemicals.

Prop 65 does not ban the sale of products containing these chemicals but instead requires warnings on any product, product packaging, or literature with the product. Moreover, a Prop 65 warning does not mean that a product is in violation of any product safety standards or requirements. In fact, the California government has clarified that a Prop 65 warning "is not the same as a regulatory decision that a product is 'safe' or 'unsafe.'" Many of these chemicals have been used in everyday products for years without documented harm. For more information, go to <https://oag.ca.gov/prop65/faqs-view-all>.

A Prop 65 warning means that a company has either (1) evaluated the exposure and has concluded that it exceeds the "no significant risk level"; or (2) has chosen to provide a warning based on its understanding about the presence of a listed chemical without attempting to evaluate the exposure.

## Does this law apply everywhere?

Prop 65 warnings are required under California law only. These warnings are seen throughout California in a wide range of settings, including but not limited to restaurants, grocery stores, hotels, schools, and hospitals, and on a wide variety of products. Additionally, some online and mail order retailers provide Prop 65 warnings on their websites or in catalogs.

## How do the California warnings compare to federal limits?

Prop 65 standards are often more stringent than federal and international standards. There are various substances that require a Prop 65 warning at levels that are far lower than federal action limits. For example, the Prop 65 standard for warnings for lead is 0.5 µg/day, which is well below the federal and international standards.

## Why don't all similar products carry the warning?

- Products sold in California require Prop 65 labelling while similar products sold elsewhere do not.
- A company involved in a Prop 65 lawsuit reaching a settlement may be required to use Prop 65 warnings for its products, but other companies making similar products may have no such requirement.
- The enforcement of Prop 65 is inconsistent.
- Companies may elect not to provide warnings because they conclude that they are not required to do so under Prop 65; a lack of warnings for a product does not mean that the product is free of listed chemicals at similar levels.

## Why does HII include this warning?

HII has chosen to provide consumers with as much information as possible so that they can make informed decisions about the products they buy and use. HII provides warnings in certain cases based on its knowledge of the presence of one or more listed chemicals without evaluating the level of exposure, as not all the listed chemicals provide exposure limit requirements. While the exposure from HII products may be negligible or well within the "no significant risk" range, out of an abundance of caution, HII has elected to provide the Prop 65 warnings. Moreover, if HII does not provide these warnings, it could be sued by the State of California or by private parties seeking to enforce Prop 65 and subject to substantial penalties.

## NOTES

Harper Industries, Inc.  
151 E. Highway 160  
Harper, KS 67058

Telephone: 620-896-7381  
Toll-Free: 800-835-1042  
Fax: 620-896-7129

Website: [www.harperindustries.com](http://www.harperindustries.com)

E-mail: [info@harperindustries.com](mailto:info@harperindustries.com)