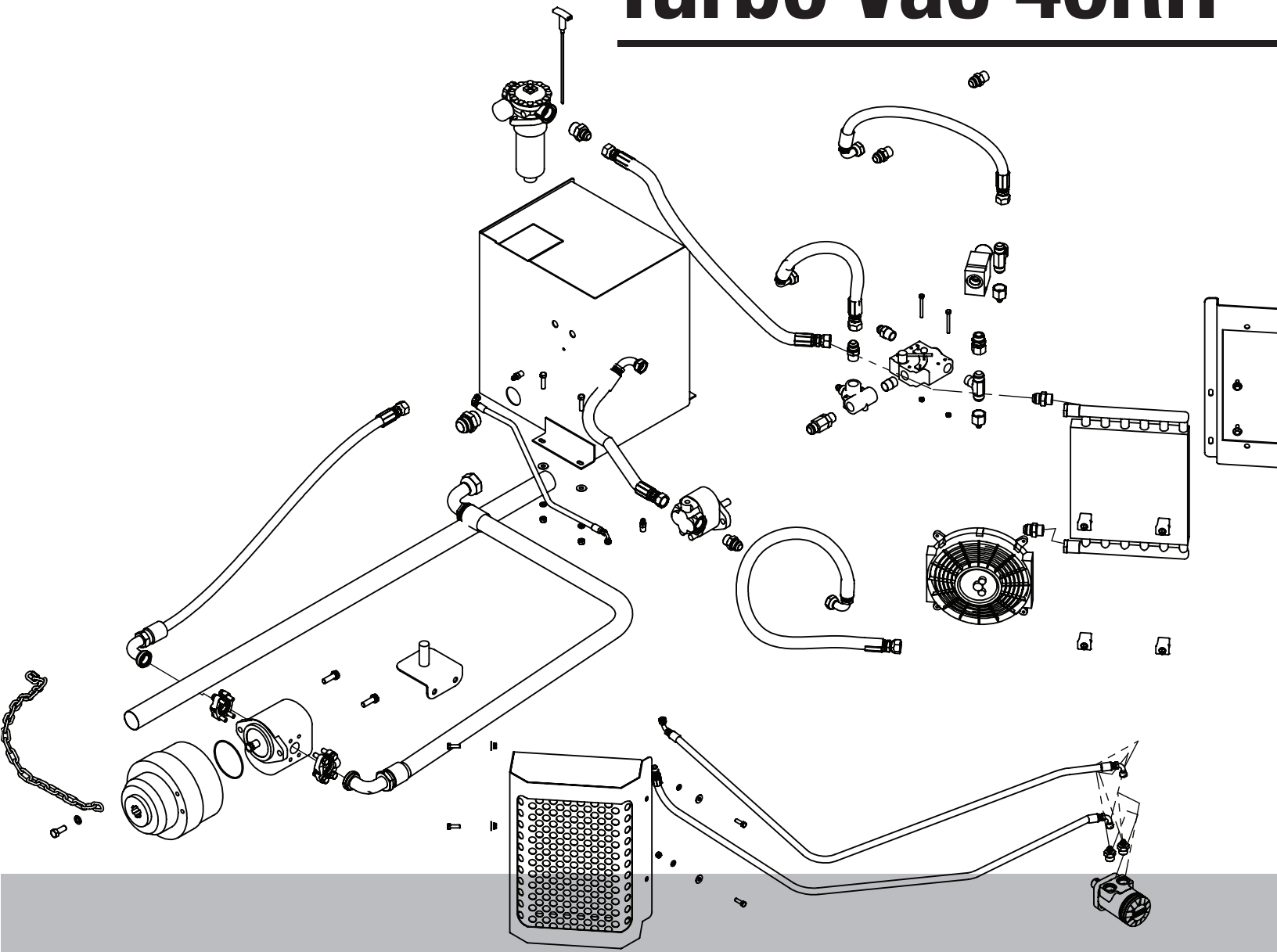


Turbo Vac 40RH



OPERATOR'S & PARTS MANUAL

Thank you for purchasing a Harper Turbo Vac.

As with all Harper products, the Harper Turbo Vac has been developed through tough design and testing procedures to produce a machine that can be relied on. This manual gives assembly, operating, and service information for Model TV40 Turbo Vacs. Please read and understand all instructional material included with the Turbo Vac or its components before assembling and operating the equipment.

A Turbo Vac can present hazards to an operator who follows unsafe procedures in either the operation or maintenance of the unit. Therefore, SAFETY WARNINGS are presented at certain locations in the text.

THIS SYMBOL:



SAFETY WARNING!



MEANING: Failure to understand and obey this warning may result in injury to you or others. Whenever this symbol is used, please pay very close attention to the information presented, and make sure you fully understand. If you do not, contact your dealer or Harper Industries, Inc. for clarification.



SAFETY WARNING!



ALL SHIELDS AND GUARDS MUST BE IN PLACE FOR PROPER AND SAFE OPERATION OF THIS EQUIPMENT. WHERE THEY ARE SHOWN REMOVED IN THIS MANUAL, IT IS FOR PURPOSES OF ILLUSTRATION AND INSTRUCTION ONLY. DO NOT OPERATE THIS EQUIPMENT UNLESS ALL SHIELDS AND GUARDS ARE IN PLACE.

Harper Industries, Inc. is continually striving to improve the design and performance of its products. We reserve the right to make changes in specifications and design without thereby incurring any obligation relative to previously manufactured products.

© 2015 Harper Industries, Inc.

The and Harper name is a registered trademark of Harper Industries, Inc. All other brand and product names are trademarks or registered trademarks of their respective companies.

LIMITED WARRANTY

The Harper Turbo Vac is warranted against defects in workmanship and materials for a period of **TWELVE MONTHS** from the original date of retail purchase to the original purchaser.

Harper Industries will repair or replace, at our option, any part which our examination shows to be defective. Warranty is limited to parts, labor and ground freight delivery of replacement parts. The user will pay freight charges for parts submitted under this warranty.

No product or part may be returned for warranty consideration without prior approval from Harper Industries.

This warranty does not apply to parts subjected to misuse, abuse, alteration, improper or inadequate maintenance, or normal wear (including belts and broom).

Gasoline engines are not covered under this warranty. Refer to manufacturer's warranty for specific warranty information. Harper Industries, its agents or representatives, make or imply no other warranties.

Evaporative Emissions Control System Warranty

The evaporative emission control system is warranted for two (2) years. If any evaporative emission-related part on your equipment is defective in material or workmanship, the part will be repaired or replaced by Harper Industries Inc..

Your evaporative emission control system may include parts such as: fuel tanks, fuel lines, fuel line fittings, fuel caps, carbon canisters, canister mounting brackets, carburetor purge port connection, filters, vapor hoses, clamps, control valves, control solenoids, electronic controls, vacuum control diaphragms, purge valves, liquid/vapor separator and other associated components.

RECORDS

Date of Purchase _____ / _____ / _____

Serial Number Machine _____

Dealer's Name _____

Serial Number Engine _____

Dealer's Phone _____

Table of Contents

OPERATOR SECTION

To the Owner or Operator.....	1
Warranty Statement.....	2
Table of Contents.....	3
Specifications.....	4
Control Identification	
TV40RH	
Hopper.....	5
Broom Motor.....	5
Air Return.....	5
Hydraulic Reservoir.....	5
Hydraulic Pump.....	5
Oil Cooler.....	5
Safety Guidelines	
Gasoline.....	6
Guards & Shields.....	6
Safety Decals.....	6
Battery.....	7
Equipment Controls.....	7
Towing.....	7
Hydraulics.....	7
Before Operation.....	8
During Operation.....	8
Operations	
Starting Operation.....	9
Stopping Operation.....	10
Unloading.....	10
Adjustments	
Broom Height.....	10
Hopper Door Latch.....	11
Height Adjustment.....	11
Belt Tension.....	11
Hose Option.....	12
Stopping Operation.....	12
Flap Adjustment.....	12
Edge Brush Option.....	13
Service & Maintenance	
Blower Liner.....	14
Screens.....	14
Grease Location.....	15
Service Schedule.....	16
Troubleshooting.....	17

PARTS SECTION

Table of Contents

Electrical

TV 40H Electrical Schematic.....	1.1
----------------------------------	-----

Blower

Air Return.....	2.1
Fan & Liner.....	2.2
Blower Housing.....	2.3

Broom

Hydraulic Res. Valve and Drive.....	3.1
Broom Wheels.....	3.2
Broom.....	3.3
Finger Reel.....	3.4

Hopper

Hopper & Return Screen.....	4.1
Hopper Door & Latch.....	4.2
Door Seal Assembly.....	4.3

Frame and Decals

Frame.....	5.1
TV 40 Decals.....	5.2

Optional Equipment

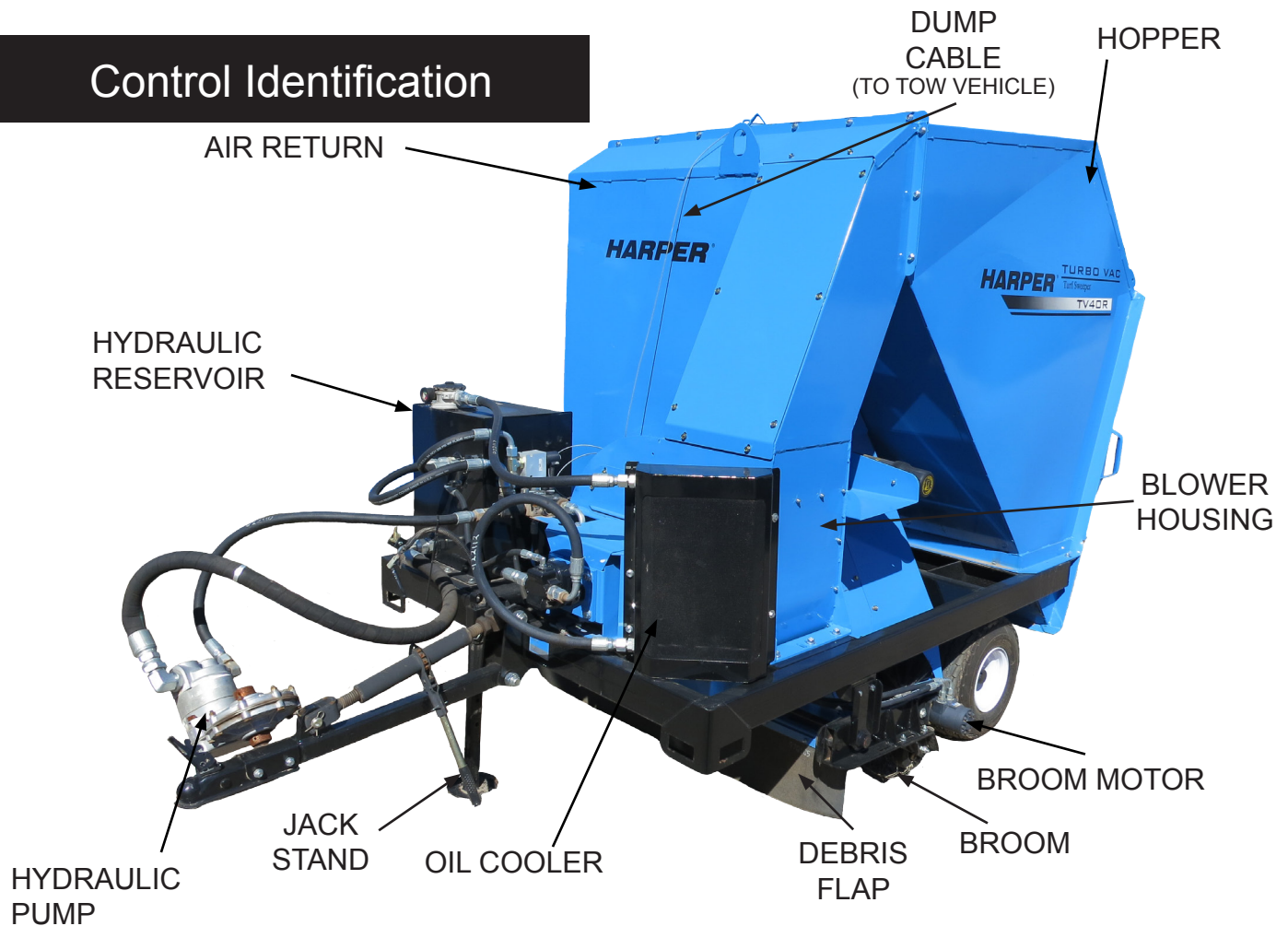
Remote Hose Option - TV 40.....	6.1
Edge Brush Option - TV 40.....	6.2

Specifications

Safety Features	Minimal dust generated, quiet operation - 90 dB
Blower Drive	Double V-belt drive with electric clutch
Blower Fan	25" diameter abrasion resistant steel with replaceable poly-liner 1 1/2" shaft with self-aligned bearings
Blower Discharge	Access plate for inspection and easy liner replacement
Airflow	Re-circulated air system
Brush Drive	Hydraulic motor direct drive
Engine	20 HP Kohler, gasoline
Hydraulics	Belt driven hydraulic pump
Hydraulic Oil	Terresolve EL 3068, bio-based, high performance, ISO 68-viscosity, severe service See Service Schedule
Main Frame	11 gauge welded and reinforced steel tubing
Bearings	Greaseable sealed bearings
Hopper Capacity	4 cubic yards
Wheels/Tires	4-bolt wheels, 18.5 x 8 tires
Controls	Engine, blower & brush controls on machine
Pick-up Brush	Option 12" Diameter x 52" replaceable brush
Discharge	Mechanical trip and latch system
Tongue and Hitch	Adjustable tongue functions as pick-up height controller
Paint	Durable 2-part polyurethane
Dimensions	135" L x 64" W x 82" H
Weight	1600 lbs. - 730 kg

NOTE: *Following publication of this manual, certain changes in standard equipment and/or options may have occurred which would not be included in these pages. Your Harper dealer is the best source for up-to-date information.*

Control Identification



Hopper* – The hopper stores up to 4 yards of material.

Broom Motor* – The broom motor turns the broom clock-wise, throwing material forward and upward into the air stream.

Air Return* – Allows air to be put into the ‘recirculating’ effect which is common feature among all Turbo Vacs.

Hydraulic Reservoir – The hydraulic reservoir on a TV40RH has a 20 gallon capacity.

Hydraulic Pump – The hydraulic pump on the TV40RH is directly attached to the tractor PTO.

Blower Housing* – Surrounds the fan and is covered on the inside by a plastic liner.

Dump Cable* – Releases the hopper door.

Oil Cooler – The oil cooler prevents the hydraulic oil from over-heating. Always keep the fins free of debris.

Debris Flap* – Helps to keep vacuum concentrated to the ground and to direct the material from the broom into the suction.

Broom (optional)* – Assists material from the turf into the suction of the blower.

Jack Stand* – Supports the front of the Turbo Vac when it is not connected to a tractor. During operation, the jack stand must be up, with the wheel removed and in the transport location.

* Denotes common features of both the TV40RE and TV40RH

Safety Guidelines

- Use genuine factory parts or parts with equivalent characteristics, including type, strength and material. Failure to do so may result in product malfunction and possible injury to the operator and/or others.
- If hardware is not secure, or if some of the hardware is over-tightened, equipment failure may result, posing possible safety hazards.
- To prevent possible eye injury, always wear SAFETY GLASSES while operating equipment.
- Replace locknuts and locking screws if you can tighten them without feeling considerable resistance for several turns before they are completely tight. Replace them with factory authorized parts or their equivalent.

Guards & Shields

- Keep all safety devices in place.
- Replace all worn, damaged, unusable, missing or lost safety shields and guards before operating the equipment.
- Keep the equipment in good operating condition.

Safety Decals

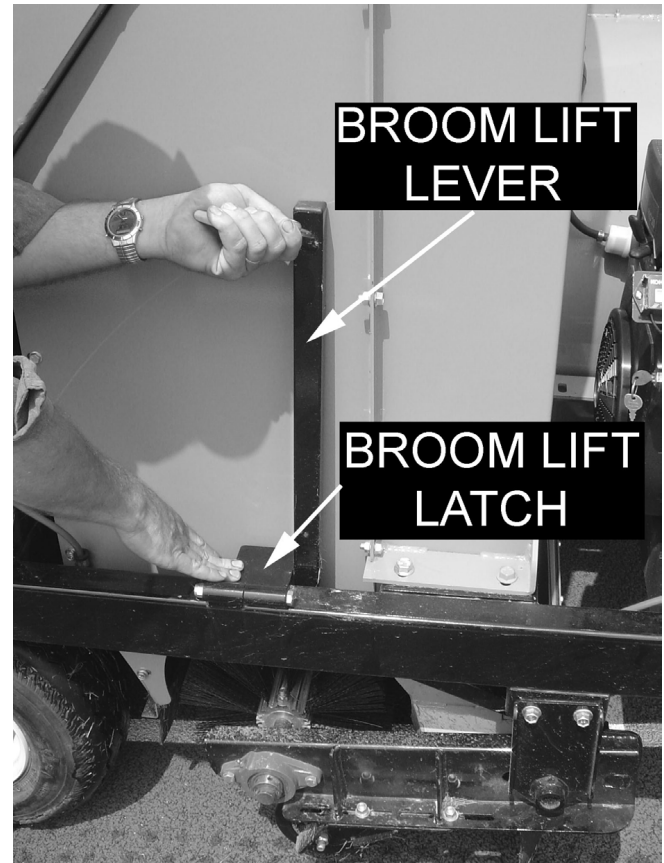
- If safety related or instructional decals become illegible or are removed, replace them immediately. New decals may be obtained from your local Harper Dealer.
- If you replace parts that have such decals attached to them, make sure the decals are replaced with current versions, and are on the replacement parts before the machine is operated again.

Equipment & Controls

- Read and understand this manual.
- Altering this equipment in any manner which adversely affects its operation, performance, durability, or use will void the warranty and may cause hazardous conditions.
- Know the location and function of all controls and how to stop this equipment quickly in an emergency before you operate the equipment.
- Keep all nuts, bolts and screws tight to help ensure safe operation of this equipment.

Towing

- If towing on the highway, tail lights and turn signals must be attached before towing.
- Use a safety chain when towing.
- Make sure jack stand is up.
- Tire pressure should be 30-32 psi.
- Make sure lug nuts are tight.
- Broom should be locked up so that it does not rub on the ground.



Broom is locked up when the lift handle is in the vertical position and the latch is in place.

Hydraulics



SAFETY WARNING!



Escaping fluid under pressure can penetrate skin causing serious injury. To prevent serious injury or death:

- Relieve pressure on system before repairing, adjusting or disconnecting.
- Wear proper hand and eye protection when searching for leaks.
- Use wood or cardboard instead of hands when looking for leaks.
- Keep all components in good repair.
- Do not use any type of heat, (welding, soldering, cutting torch, etc) near pressurized lines.

Before Operation

- Before operating this equipment, read and understand the Owner's Manual.
- Do not allow children to operate this machine.
- Tire pressure should be 30-32 psi. Make sure both tires have equal pressure.
- Wear approved eye and ear protection and other appropriate safety equipment while operating the machine.
- Make sure bolts holding tongue are secure and the jack is in the transport position. Use a safety chain.
- Any change can damage moving parts and void the warranty.
- Before starting the machine, visually inspect all nuts, bolts and other fasteners to see that they are properly secured. Nuts, bolts and other fasteners should be checked every 8 to 10 hours of operation for proper alignment and tightness.
- Replace damaged or missing safety decals.
- Replace locknuts and locking screws if you can tighten them without feeling considerable resistance for several turns before they are completely tight. Replace them with factory authorized parts or their equivalent.
- Make sure that all bearings or hinging parts are greased and or oiled properly. (See Service & Maintenance Section for more information)

During Operation

- Always keep a fire extinguisher near the Turbo Vac during operation.
- Keep clothing and all body parts away from rotating parts.
- When sweeping material into the machine, make certain there are no foreign materials such as rocks, cans, bottles or other hard materials included. Sweeping hard materials will reduce the life of the plastic liner in the blower housing.
- If a foreign object should strike the broom or blower mechanism and cause an unusual noise or vibration, shut the engine off immediately and allow it to come to a complete stop.

Do the following:

1. Inspect for damage.
 2. Repair or replace any damaged parts.
 3. Check for and tighten any loose bolts, nuts, fasteners or parts.
- Keep all safety shields and guards in place and in good working condition.
 - If the Turbo Vac should become clogged, shut off the engine and allow it to come to a complete stop.
 - Hydraulic system operates under high pressure. Disable system prior to service.

Operations

1. Obtain and wear safety goggles before operating.
2. Attach the Turbo Vac to the tow vehicle. Be sure that the Turbo Vac is adjusted to the correct height. (Refer to adjustment section for information on setting the height.)
3. Run the dump cable to the tow vehicle to allow for convenient dumping. Attach with the pin provided to allow cable to break away from tow vehicle if it is not removed when unit is disconnected. This will help prevent any damage if the cable is forgotten.
4. Make sure that the blower and broom are disengaged.
5. Move the blower switch to the “on” position.
6. If the unit has a broom, lower it and slowly engage broom lever.
7. Begin normal operation.

Stopping Operation



SAFETY WARNING!



Do not leave machine unattended, or attempt any service or inspection unless the machine has come to a complete stop.

1. Shut off tow vehicle and set the park brake.
2. Turn off the blower switch and disengage the broom lever.
3. Allow the machine to come to a complete stop.

Unloading



SAFETY WARNING!



To reduce the risk of injury, do not stand near the back of the Turbo Vac while unloading.

1. Find a suitable place to dump the collected material.
2. Pull dump cable. Hopper door will open and material will slide out.
3. Drive forward to allow all the collected material to escape hopper.



4. Door will swing shut and latch when it clears the collected material.

Adjustments

Broom height

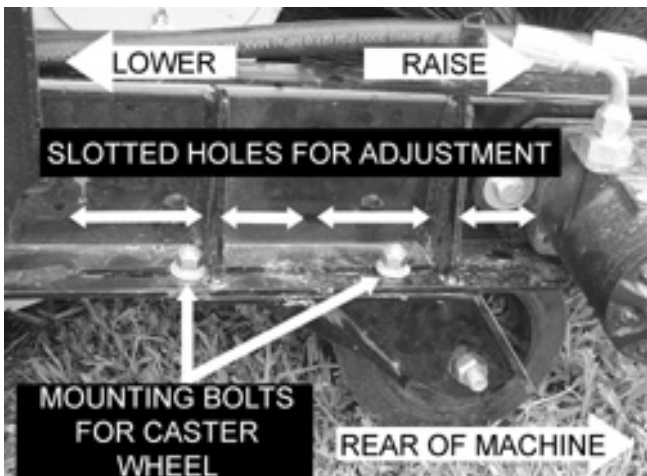
The broom height needs to be adjusted so that the broom is touching the top of the grass.



The broom height is determined by the caster wheels that it rides on. The caster wheel is attached with bolts located in slotted adjustment holes.

To adjust:

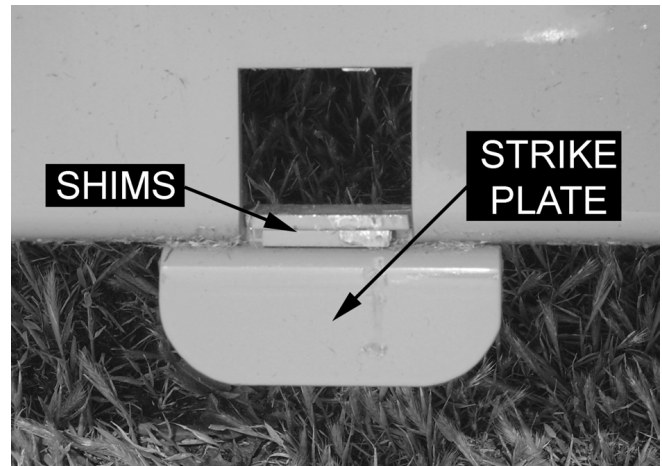
- Remove caster wheel mounting bolts.
- Adjust caster wheel to achieve desired broom height and tighten bolts.



Note: Brooms are originally 12" in diameter. When the broom wears to 10" the adjustment will not lower the broom enough for it to perform adequately and needs to be replaced. Part # 973001

Hopper Door Latch

Adjustment of the hopper door latch should never be necessary. If the hopper door won't latch or the hopper door does not seal against the hopper there are adjustments that can be made. There are shims that bolt on with the strike plate that can adjust the depth of the latch. It is possible to add or remove shims to make the door close properly.

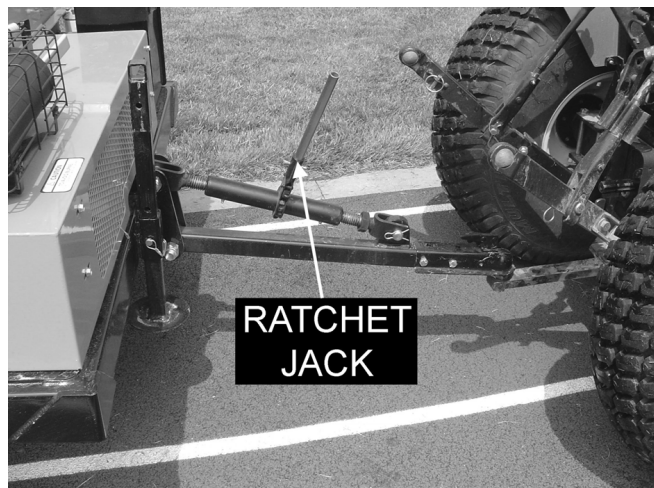


Height Adjustment

For best performance the Turbo Vac must be operating at the correct height. At the correct height the debris flap touches the top of the grass.

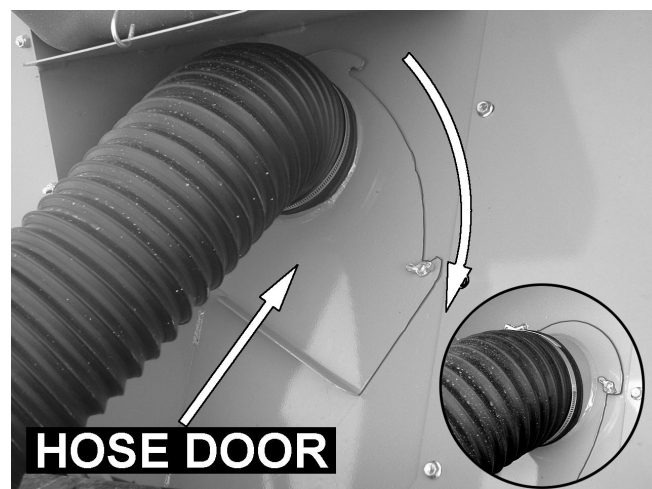


The height can be easily adjusted up or down by using the ratchet jack.

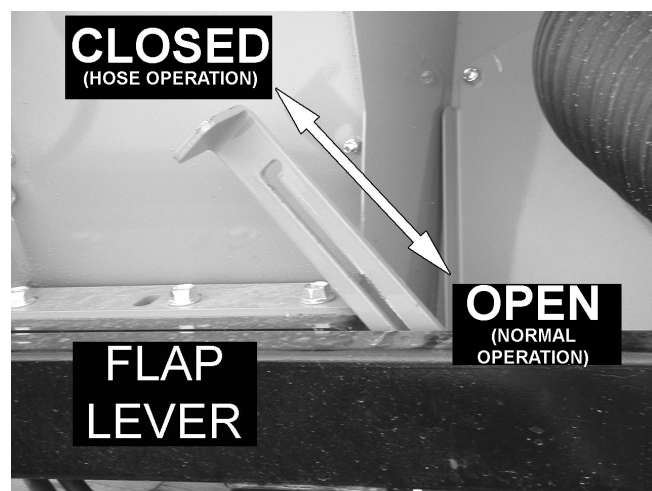


Hose Option (900217)

1. Open the Hose Door by loosening the wing nut and swiveling the door down to the next notch.



2. Close the Flap. This blocks off air intake from underneath and creates suction in the hose.



3. Begin using hose.



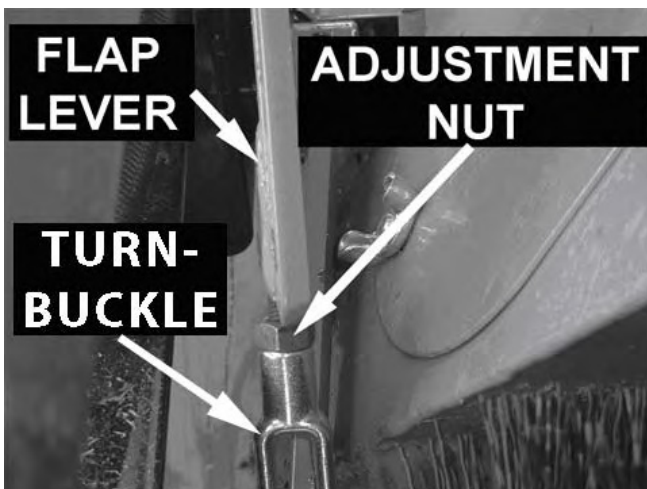
Stopping Operation

1. Move the flap lever to the open position.
2. Close the hose door.
3. Store hose in cavity between hopper and frame.



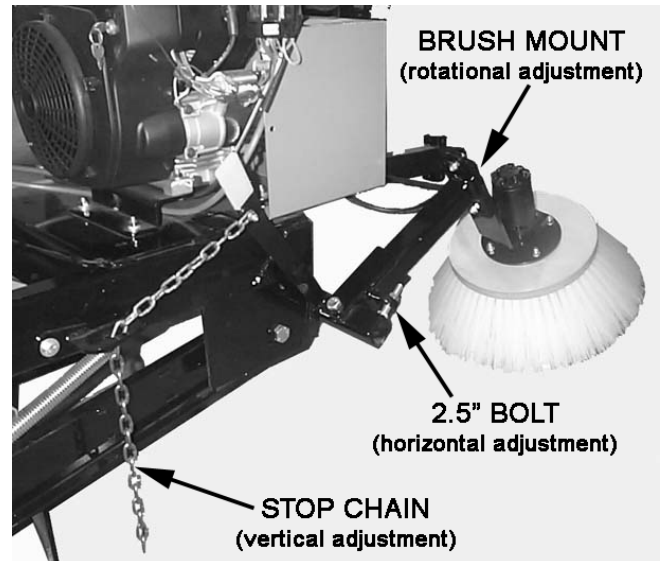
Flap Adjustment

- If there is not adequate suction at the hose make sure the flap is closing completely (a small gap will work because the vacuum will suck it shut). If there is a big gap, the flap may need adjusted. Loosening the adjustment nut will shorten the flap lever causing the flap to close tighter.



Edge Brush Option (900216)

- Follow instructions in Parts Section for installation of Edge Brush Option.
- The edge brush kit is used for cleaning areas along fences and curbs, etc., that are difficult to reach with the Turbo Vac broom.



- The edge brush can be adjusted vertically and horizontally, as well as rotated at an angle, so that debris is thrown into the Turbo Vac broom. For best results, angle the front edge of the brush downward.
- The stop chain is used to adjust the height of the brush during operation and to hold it up during transport.
- Never allow the brush to rest completely on the ground during operation.

SAFETY WARNING!

The Turbo Vac should never be transported with the edge brush in operating position. Always use the stop chain to suspend the brush during transport.

Contact your Harper Dealer for more information about optional equipment, or see the Harper Industries website at:
www.harperindustries.com

Service & Maintenance

⚠ **SAFETY WARNING!** ⚠

- Before servicing or inspecting the Turbo Vac, make sure the power source is shut off and all moving parts have stopped.
- Always wear safety glasses and protective gloves when servicing the Turbo Vac.

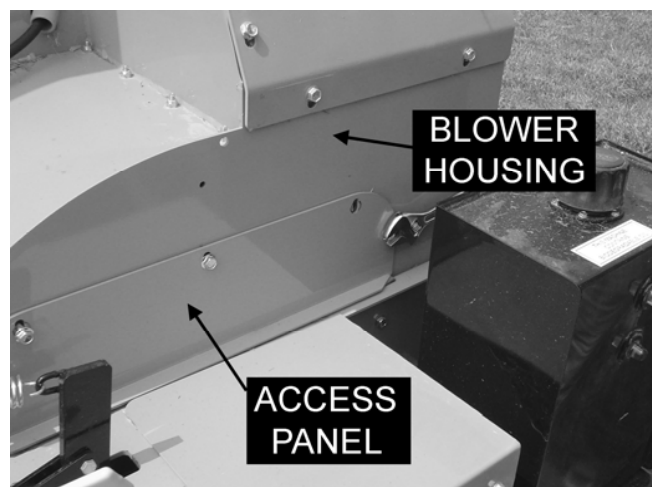
Blower Liner

⚠ **IMPORTANT!** ⚠

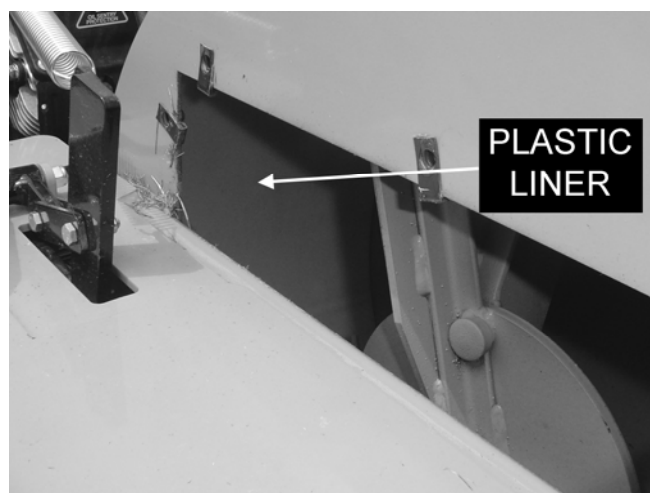
Regularly check the **BLOWER LINER** in the blower housing for wear. Failure to maintain blower liner may result in damage to the blower housing.

To check Blower Liner:

Remove access panel.



Check white plastic liner located around the inside walls of the blower housing around the blower fan.



If liner is damaged or worn through; replace to avoid damage to blower housing. Part # 972009 or 972021 for a heavy duty urethane liner.

NOTE: Blower liner is a wear item and is not covered under warranty. Sandy conditions may shorten the life of the blower liner.

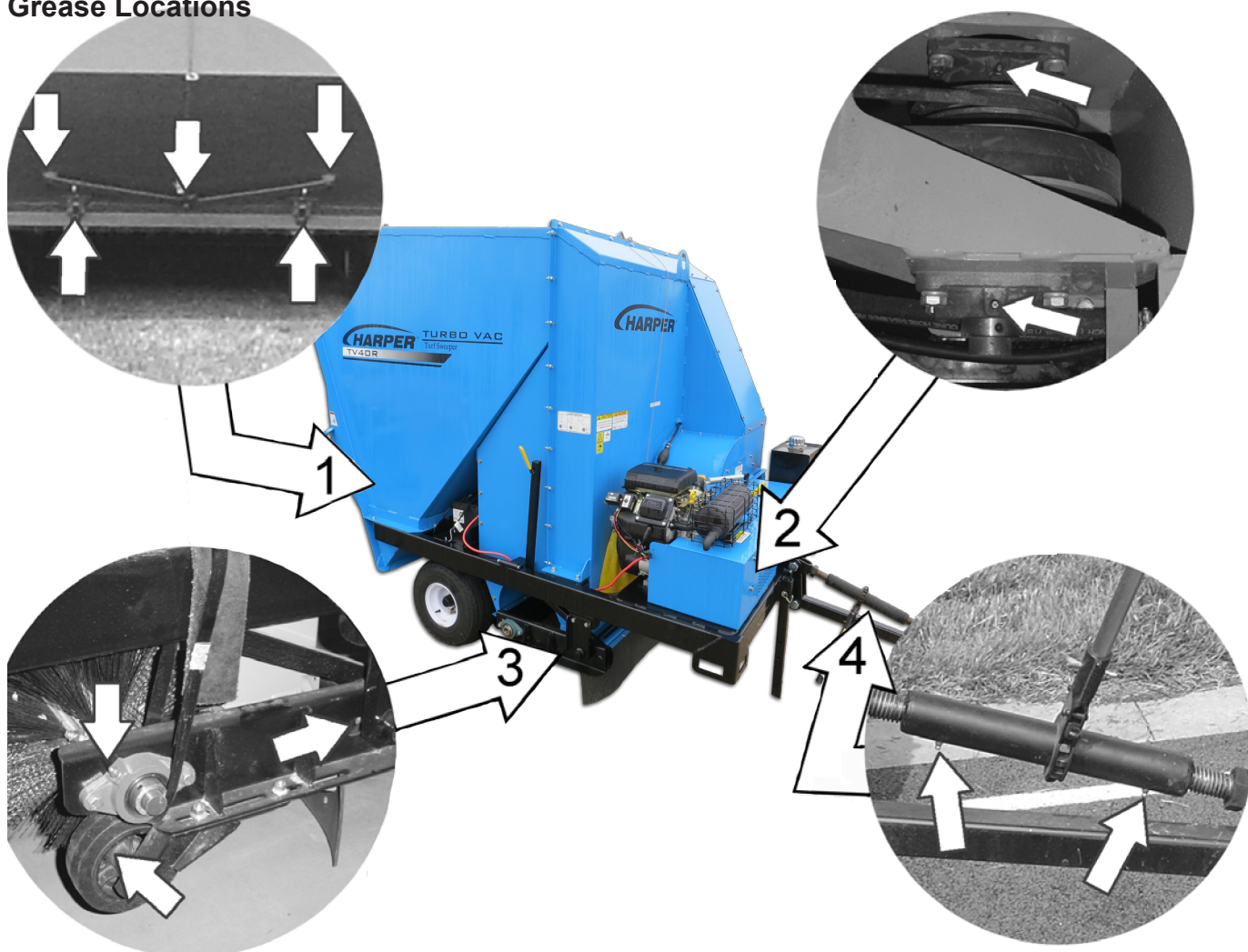
Screens

Periodically check the return air screens located in the hopper for excess buildup. Excess buildup can reduce performance and or negate the return air system causing an increase of dust.



To Clean Main Screen: Remove the two pins holding it in place. The screen will then swing down and can easily be cleaned out.

Service & Maintenance.
Grease Locations



1. Hopper Door Latch Mechanism

The two latches and three shoulder bolts should be periodically oiled to prevent rusting and ensure proper operation.

2. Blower Shaft

The two grease zerks located on the shaft bearings should be greased every 10 hours. To access these bearings the front safety shield must be removed.

3. Broom Bearings, Pivot Arms & Wheel

The grease zerks located on the ends of the broom shaft, the pivot arms and the caster wheel should be greased every 10 hours. The pivot arm grease zerks are accessed through a hole in the frame.

4. Ratchet Jack

There are two grease zerks on the ratchet jack that should be greased annually.

Service Schedule

Daily or Before Starting Engine

Check hydraulic oil level..... Mobil EAL 224H or equivalent - oil has shelf life of two years
Use only biodegradable oil; mixing oils will result in a loss of biodegradability.

Check hydraulic fan shield..... Clean if necessary

Visually inspect machine..... Check for loose bolts, fitting and hoses

Grease..... Refer to service section

Check tire pressure..... 30-32 PSI

25 Hour Service (including previous items)

Check plastic liner..... Replace if necessary
Part # 972009

50 Hour Break-in Service (perform after first 50 hours of use)

Change hydraulic filter..... DewEze part # 220559

100 Hour Service (including previous items)

Clean cooling areas by removing cooling shrouds

250 Hour or Annually Service (including previous items)

Change hydraulic filter..... DewEze part # 220559

500 Hour or Annually Service (including previous items)

Change hydraulic oil..... 5 gallons - Mobil EAL 224H or equivalent

Troubleshooting

Vacuum:

Problem:	What to Check:
Turbo Vac won't sweep up material	<ul style="list-style-type: none">• Hopper may be full• Turbo Vac may not be close enough to the ground• Air screens in hopper may be plugged• Nozzle may be plugged• Door for hose option may be closed

Parts Section



TURBO VAC 40

Table of Contents

PARTS SECTION

Table of Contents

Electrical

TV 40H Electrical Schematic.....	1.1
----------------------------------	-----

Blower

Air Return.....	2.1
Fan & Liner.....	2.2
Blower Housing.....	2.3

Broom

Hydraulic Res. Valve and Drive.....	3.1
Broom Wheels.....	3.2
Broom.....	3.3
Finger Reel.....	3.4

Hopper

Hopper & Return Screen.....	4.1
Hopper Door & Latch.....	4.2
Door Seal Assembly.....	4.3

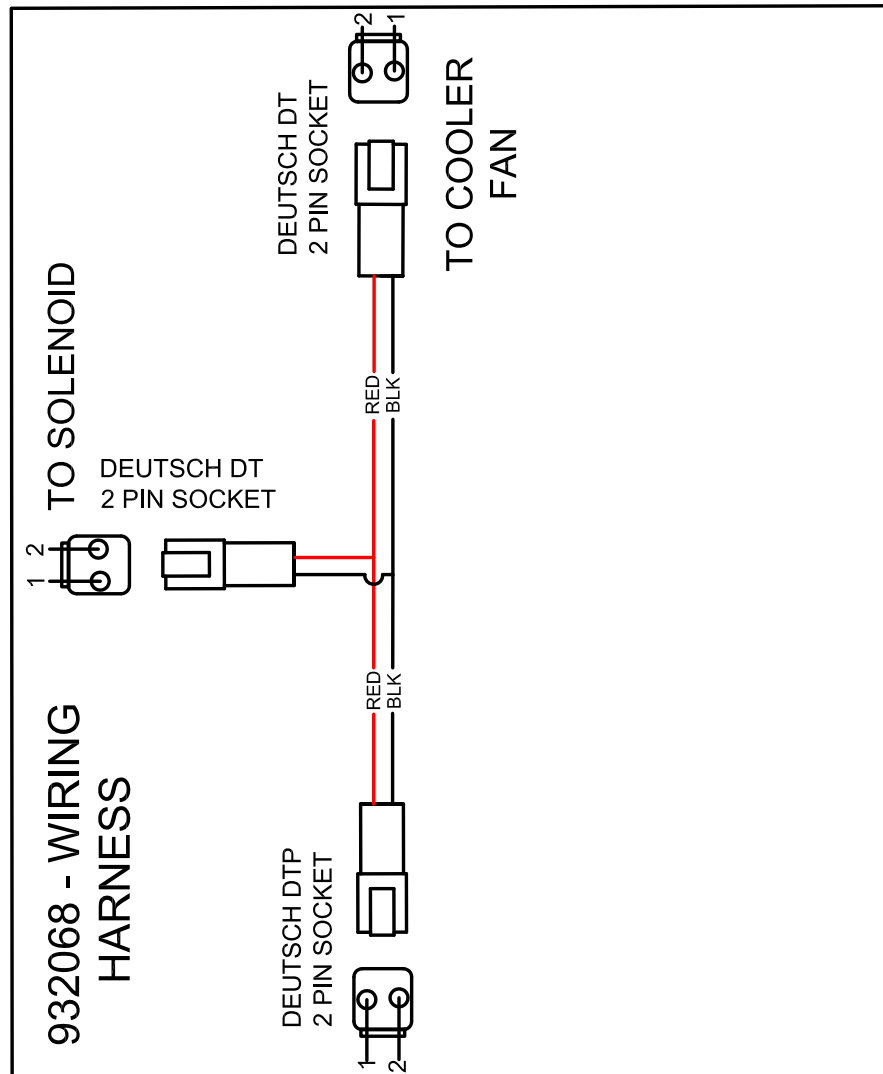
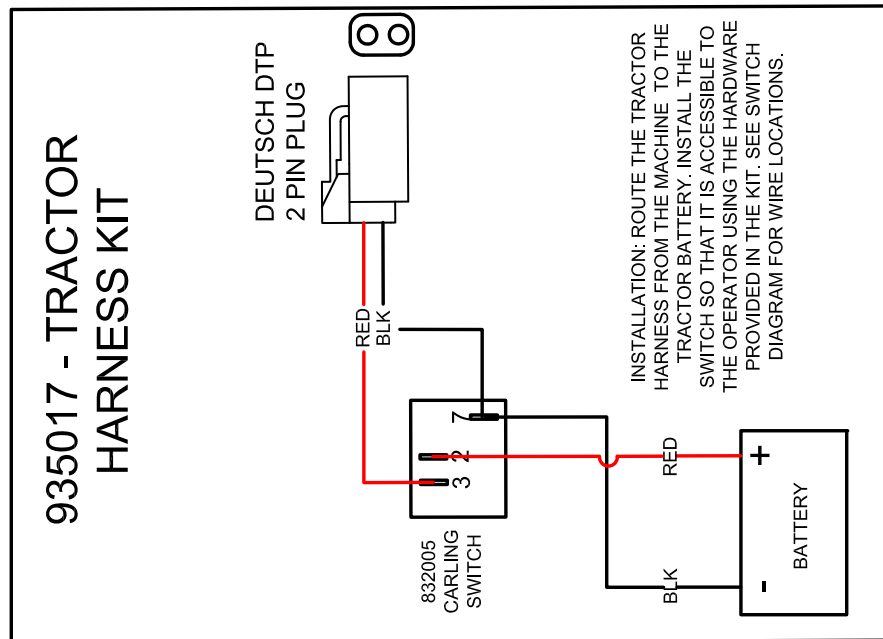
Frame and Decals

Frame.....	5.1
TV 40 Decals.....	5.2

Optional Equipment

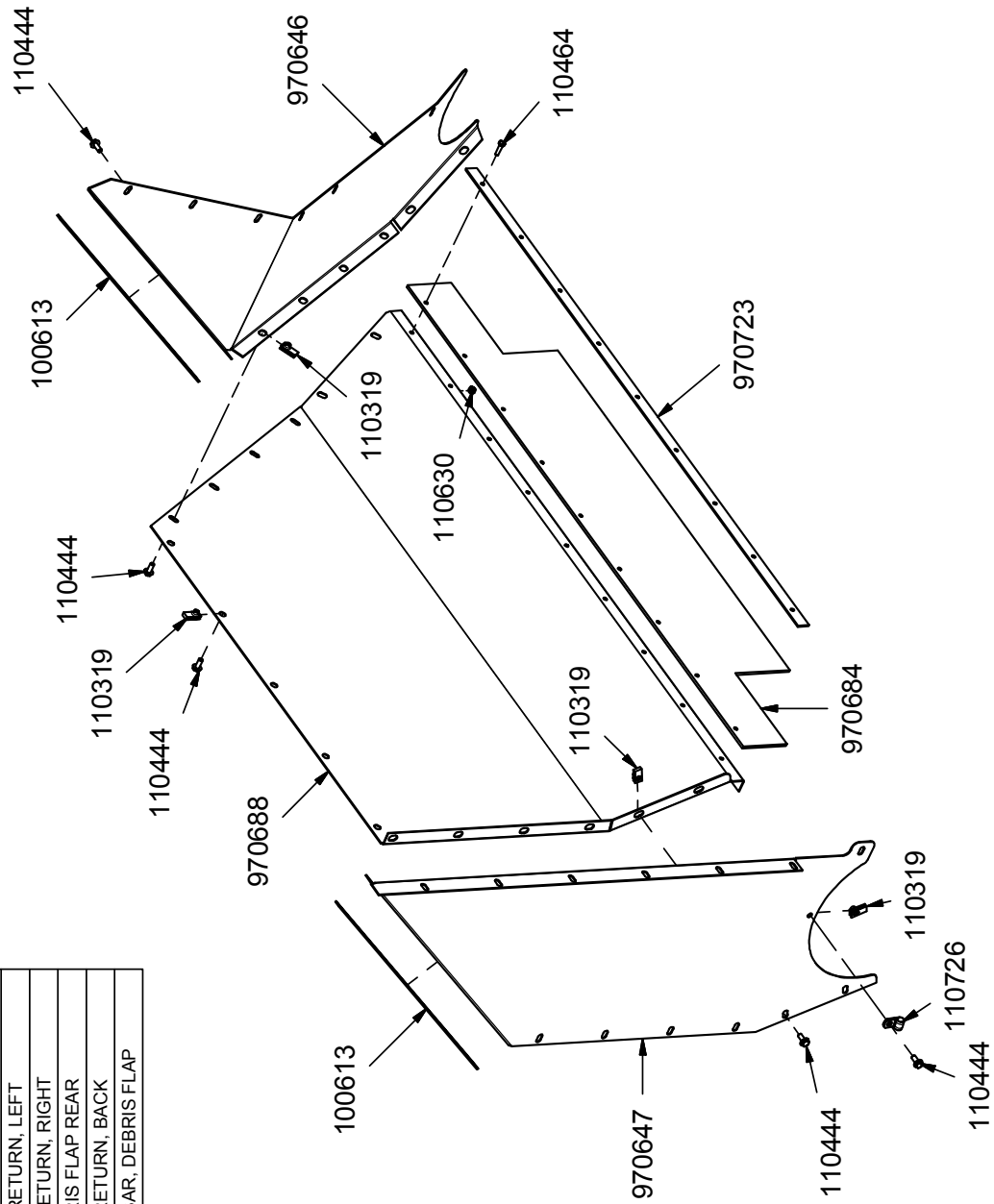
Remote Hose Option - TV 40.....	6.1
Edge Brush Option - TV 40.....	6.2

TV 40H ELECTRICAL SCHEMATIC



Parts List		
PART #	QTY	DESCRIPTION
100613	8 FT	SEAL
110319	17	NUT, 5/16-18 U-TYPE .75L
110444	25	BOLT, 5/16-18 X 0.75, WIZ FLANGE
110464	9	BOLT, 1/4-20 X 1.0
110630	9	NUT, 1/4-20 LOCK (NYLON INSERT)
110726	2	CLAMP, ADEL .75WX.5IDx.406 HOLE
970646	1	AIR RETURN, LEFT
970647	1	AIR RETURN, RIGHT
970684	1	DEBRIS FLAP REAR
970688	1	AIR RETURN, BACK
970723	1	CLAMP BAR, DEBRIS FLAP

AIR RETURN



Parts List			Parts List	
PART #	QUANTITY	DESCRIPTION	PART #	DESCRIPTION
110001	6	BOLT, 1/2-13 X 1.25, WIZ FLANGE	940041	BLOWER SHAFT
110093	4	SetScrew, 3/8-16 X 1.25	940113	KEY, 3/8 X 5
110319	2	NUT, 5/16-18 U-TYPE .75L	942053	BELT, POWERBAND 2B70
110326	12	Bolt, 1/4-20 X 1 in Carriage	942067	BUSHING, SK 1 1/2
110379	4	BOLT, 1/2-13 X 2.0	942152	SHEAVE, 2A8.2/B8.6 QD-SK
110419	4	BOLT, 1/2-13 X 1.75	942180	BUSHING, QD 1-1/2" SDS
110444	4	BOLT, 5/16-18 X 0.75, WIZ FLANGE	970161	BLOWER LINER RETAINER
110588	6	NUT, 1/2-13 WIZ-FLANGE	970162	BLOWER LINER RETAINER
110630	12	NUT, 1/4-20 LOCK (NYLON INSERT)	972009	BLOWER LINER, .187 STD UHMW
110826	4	NUT, 3/8-16 GR 5	975195	FAN ASSY WLDMNT
410851	2	BEARING, 4FNG 1 1/2"	975618	BLOWER SUPPORT WLDMNT
540304	1	SHEAVE, 1A5.6/B6.0 QD-SDS		

TOP VIEW

3.50"

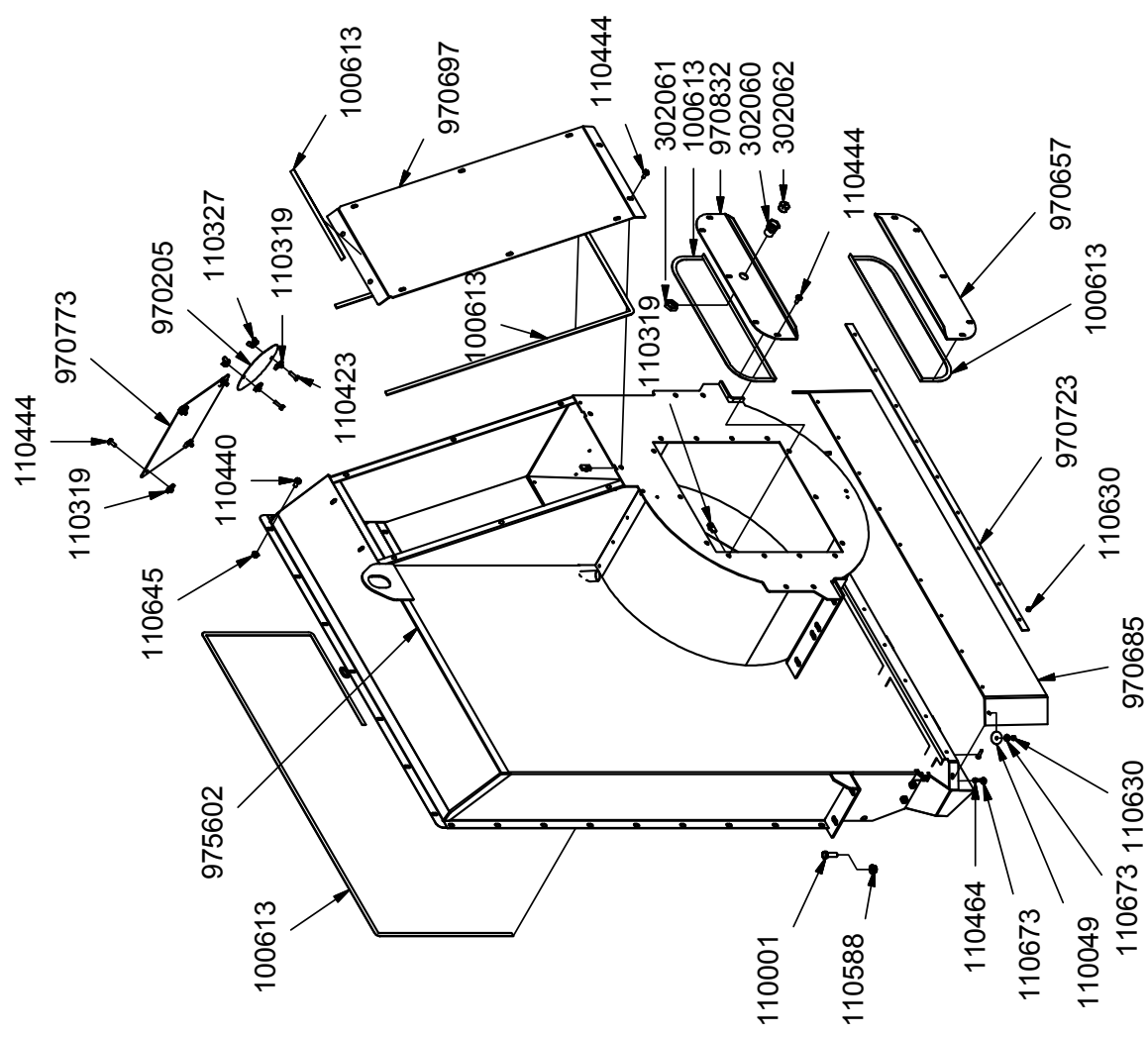
110826, 110093, 975195, 940113, 975618, 110319, 110001, 110588, 940113, 110666, 110379, 540304, 942180, 942152, 410851, 110666, 110419, 942067, 942053, 940041, 110444, 110001, 110588, 970161, 110630, 970162, 110326, 972009

SHAFT (940041) EXTENDS THROUGH WELDMENT 6.25"

ALIGN BOTH BEARINGS SO GREASE ZERKS ARE FACING UPWARDS

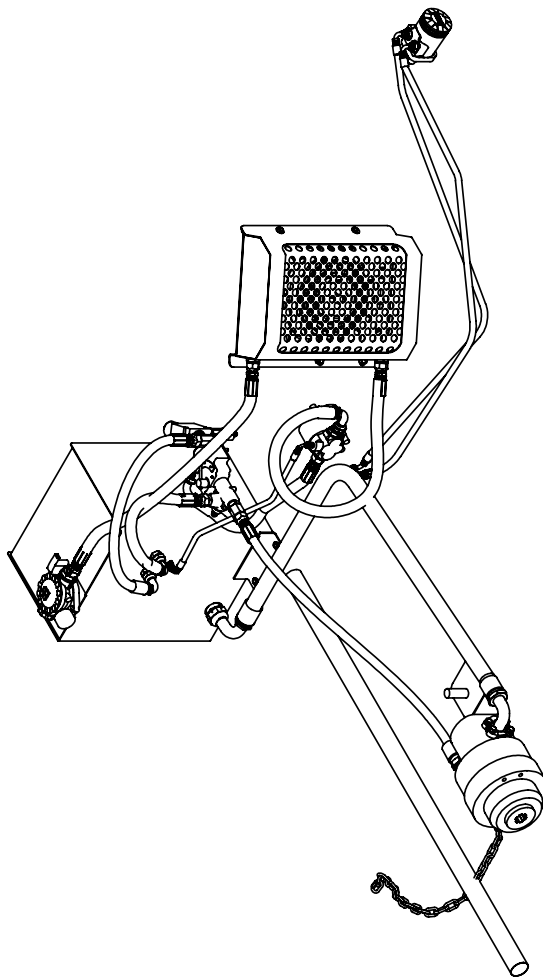
Parts List		
PART #	QUANTITY	DESCRIPTION
100613	18 FT.	SEAL
110001	7	BOLT, 1/2-13 X 1.25, WIZ FLANGE
110049	2	WASHER, 5/16 X 1.50 FENDER
110319	34	NUT, 5/16-18 U-TYPE .75L
110327	2	NUT, 5/16-18 WING
110423	4	BOLT, 5/16-18 X 1.0
110440	22	BOLT, 3/8-16 X 1, WIZ FLANGE
110444	24	BOLT, 5/16-18 X 0.75, WIZ FLANGE
110588	7	NUT, 1/2-13 WIZ FLANGE
110603	2	NUT, 5/16-18 LOCK (NYLON)
110630	11	NUT, 1/4-20 LOCK (NYLON INSERT)
110645	22	NUT, 3/8-16 WIZ FLANGE
110673	4	WASHER, 1/4" FLAT STANDARD
302060	1	SWIVEL, GARDEN HOSE-TO-PIPE
302061	1	LOCKNUT, 3/4 NPT
302062	1	PLUG, GARDEN HOSE
970205	1	NOZZLE ACCESS COVER
970657	1	PANEL, BLOWER FILLER
970685	1	MAIN DEBRIS FLAP
970697	1	DOOR, REMOVABLE
970723	1	CLAMP BAR, DEBRIS FLAP
970773	1	PLATE, HOSE OPTION COVER
970832	1	PANEL, FAN ACCESS
975602	1	BLOWER HOUSING WLDMNT

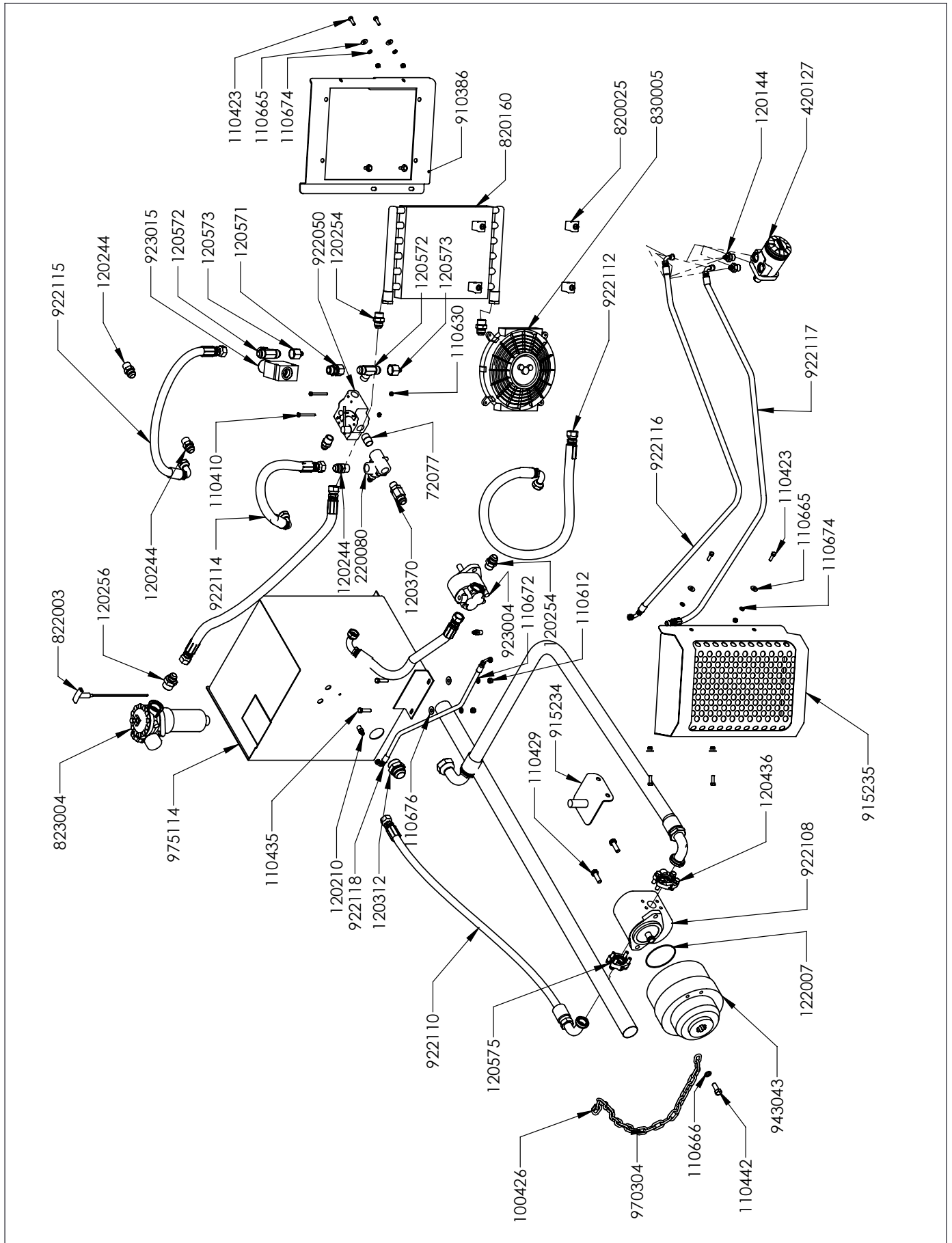
BLOWER HOUSING



10/9/2012

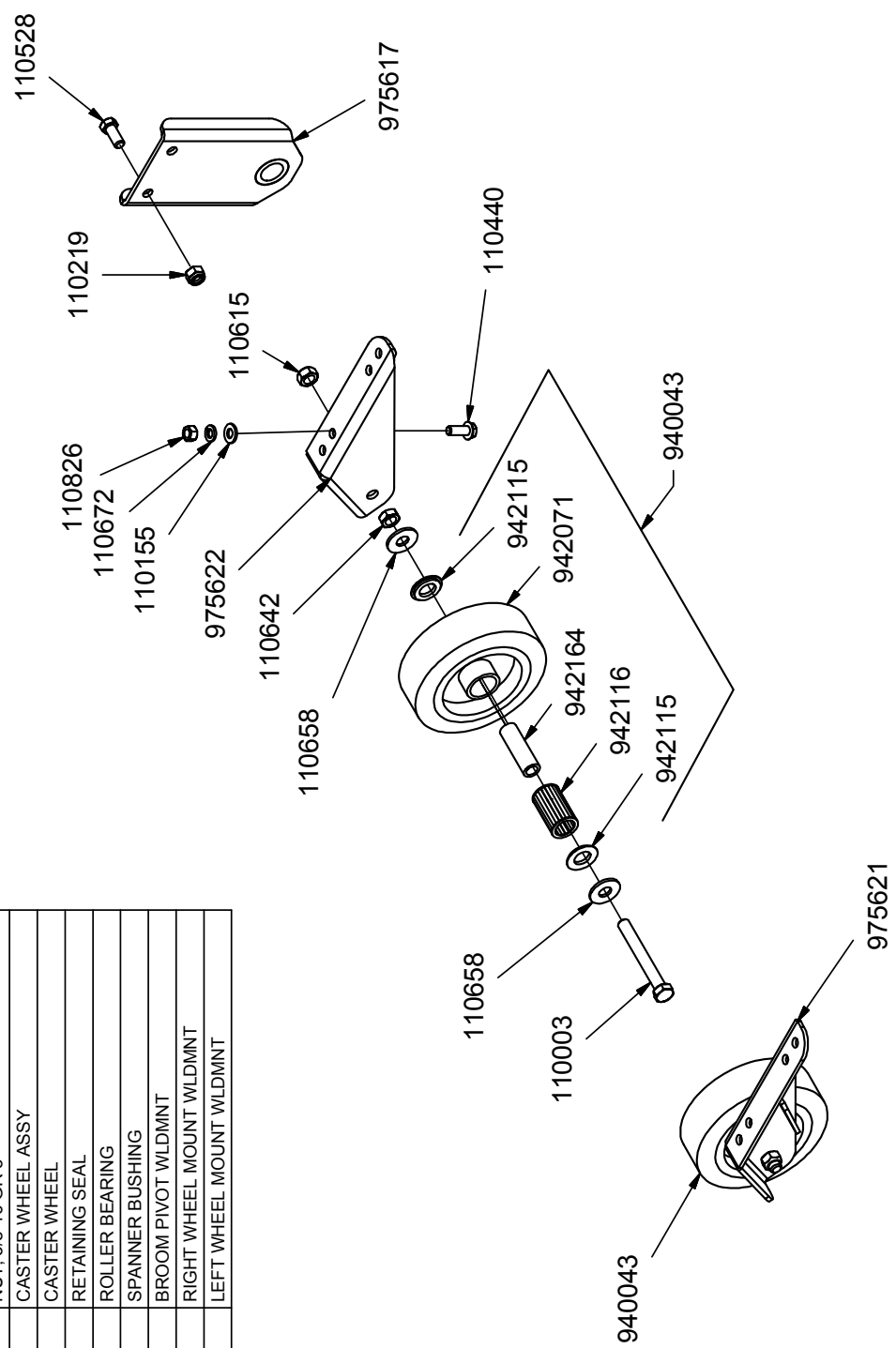
HYD RES VALVE & DRIVE TV40H					
PART NUMBER	DESCRIPTION	QTY.	PART NUMBER	DESCRIPTION	QTY.
100426	CHAIN CONNECTOR 5/16 THREADED	1	915234	GEARBOX PUMP MNT	1
110410	BOLT, 1/4-20 X 2.5	2	915235	FAN SHIELD WLD MNT	1
110423	BOLT, 5/16-18 X 1.0	8	922050	VALVE, FLOW CONTROL, 30GPM	1
110429	BOLT, 1/2-13 X 1.5	2	922108	PUMP 38cc X 7/8, BUCHER AP300	1
110435	BOLT, 3/8-16 X 1.5	4	922109	HOSE 1.25 X 73", 20-20FJX90M-20-20FL90	1
110442	BOLT, 1/2-13 x 1.25	1	922110	HOSE, 3/4 X 46", 12-12FJX-12-16FL90M	1
110603	NUT, 5/16-18 NYLOCK	8	922111	HOSE, 3/4 X 24", 12-12FJX-12-12FJX90M	1
110612	NUT, 3/8-16	4	922112	HOSE, 3/4 X 42", 12-12FJX-12-12FJX90M	1
110630	NUT, 1/4-20 NYLOCK	2	922113	HOSE, 3/4 X 42", 12-12FJX-12-12FJX	1
110665	WASHER, 5/16 FLAT	8	922114	HOSE, 3/4 X 20", 12-12FJX-12-12FJX90M	1
110666	WASHER, 1/2 LOCK	3	922115	HOSE, 3/4 X 32", 12-12FJX-12-12FJX90M	1
110672	WASHER, 3/8 LOCK	4	922115	HOSE, 3/4 X 32", 12-12FJX-12-12FJX90M	1
110674	WASHER, 5/16 LOCK	8	922116	HOSE, 3/8 X 60", 6-6FJX90M-6-6FJX90M	1
110676	WASHER, 3/8 FLAT	4	922117	HOSE, 3/8 X 62", 6-6FJX-6-6FJX90M	1
120138	ADAPTER, 10MJ-12MP	1	922118	HOSE, 1/4 X 26", 4-4FJX90M-4-4FJX90M	1
120144	ADAPTER, 6MJ-10MB	2	923004	MOTOR, 1.71CI, FAN DRIVE	1
120210	ADAPTER, 4MJ-4MP	2	923015	VALVE, HYD NO 12V-12 PORTS	1
120244	ADAPTER, 12MJ-12MP	3	943043	GEARBOX PTO PUMP DRIVE	1
120254	ADAPTER, 12MJ-12MB	3	952024	HOSE SLEEVE	1
120256	ADAPTER, 12MJ-16MB	1	970304	PUMP STOP CHAIN	1
120259	ADAPTER, 12MF-12MB-12MJ	1	975114	HYD TANK WELDMENT	1
120312	ADAPTER, 20MJ-20MB	1			
120370	ADAPTER, SWIVEL	1			
120436	FLANGE KIT, SAE SPLIT-20	1			
120571	ADAPTER, 12MB-12FJX	1			
120572	ADAPTER, 12MJ-12MJ-12MP	1			
120573	ADAPTER, 12FJ-6MJ	2			
120575	FLANGE KIT, SAE SPLIT -16	1			
122007	O-RING 2-155	1			
220080	VALVE, RELIEF CROSS	1			
420127	MOTOR, EATON 101-1009	1			
720077	FITTING, NIPPLE 3/4 X 1.375	1			
820025	MOUNT, OIL COOLER KIT	4			
820160	OIL COOLER	1			
822003	DIP STICK	1			
823004	FILTER ASSY	1			
830005	OIL COOLER FAN ASSY	1			
910386	OIL COOLER BRACKET	1			

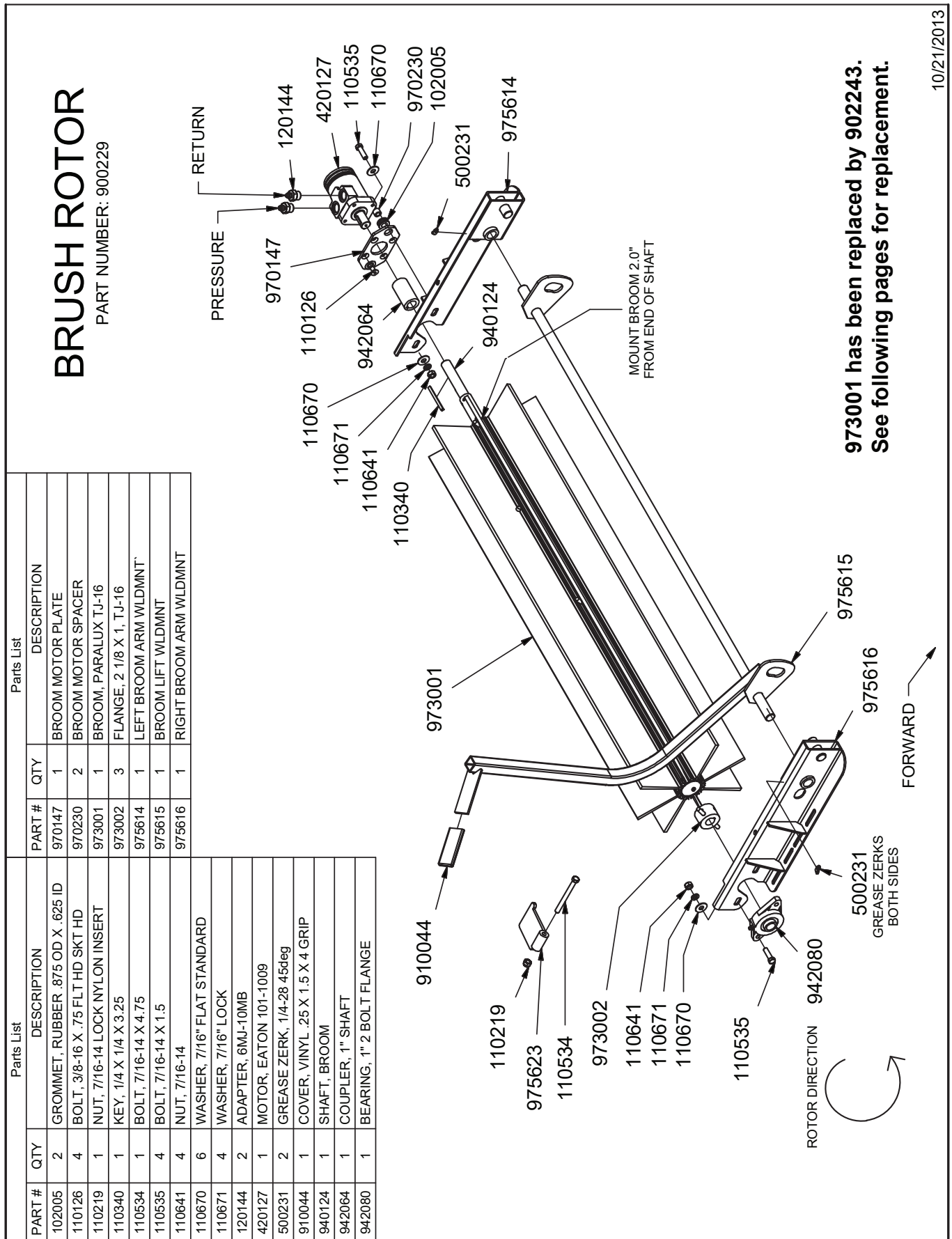




BROOM WHEELS

Parts List		
PART #	QUANTITY	DESCRIPTION
110003	2	BOLT, 1/2-13 X 4.0
110155	4	WASHER, 3/8" FLAT SAE
110219	4	NUT, 7/16-14 LOCK NYLON INSERT
110528	4	BOLT, 7/16-14 X 1.0
110612	4	NUT, 3/8-16 GR 2
110615	2	NUT, 1/2-13, UNITORQUE LOCK
110642	2	NUT, 1/2-13 HEX JAM GR 2
110658	4	WASHER, 1/2" FLAT STANDARD
110672	4	WASHER, 3/8" LOCK
110826	4	NUT, 3/8-16 GR 5
940043	2	CASTER WHEEL ASSY
942071	1	CASTER WHEEL
942115	2	RETAINING SEAL
942116	1	ROLLER BEARING
942164	1	SPANNER BUSHING
975617	2	BROOM PIVOT WLD MNT
975621	1	RIGHT WHEEL MOUNT WLD MNT
975622	1	LEFT WHEEL MOUNT WLD MNT





**973001 has been replaced by 902243.
See following pages for replacement.**

10/21/2013

FINGER ROTOR

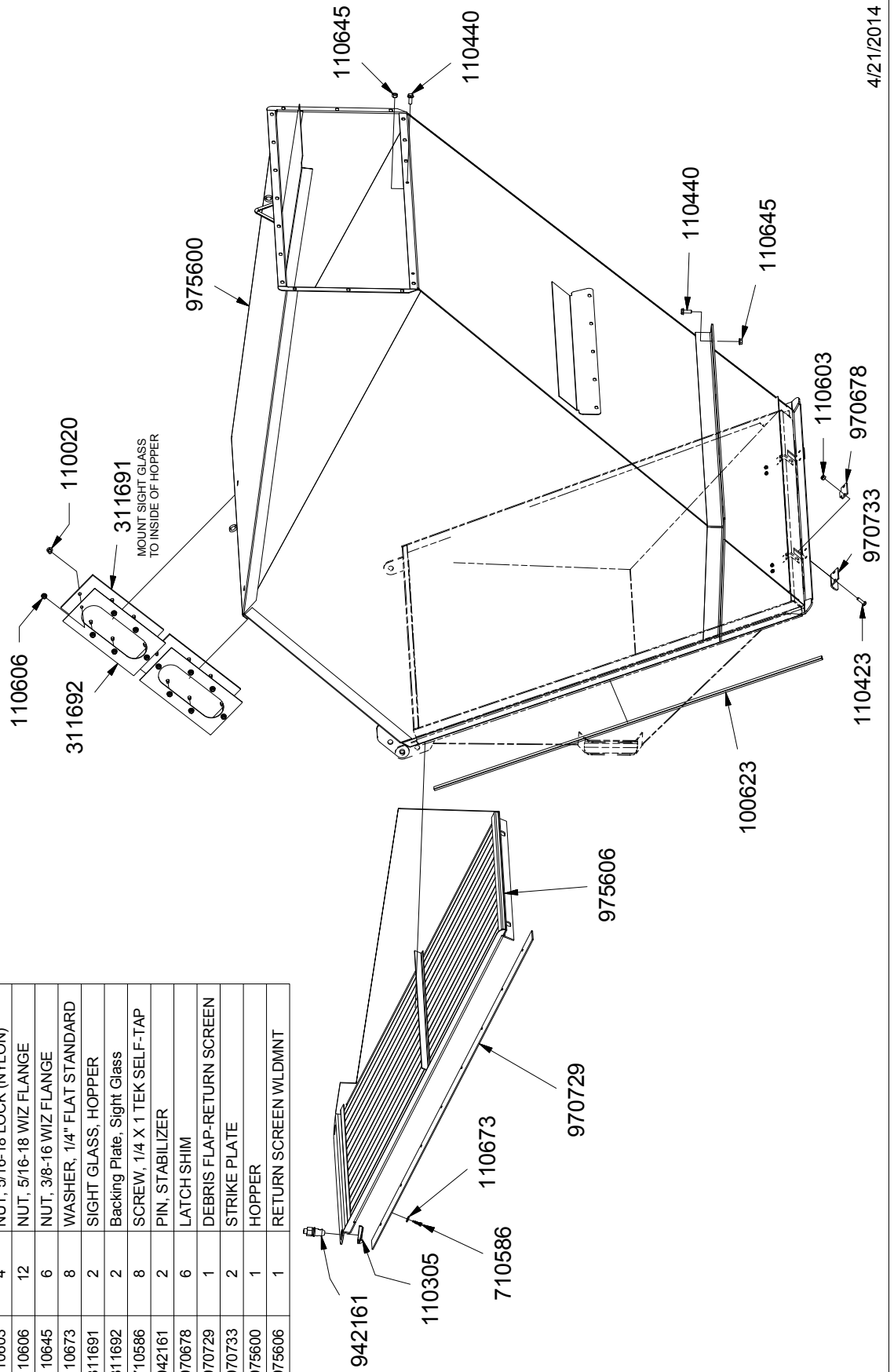
PART NUMBER: 900225

Parts List		Parts List			
PART #	QTY	DESCRIPTION	PART #	QTY	DESCRIPTION
102005	3	GROMMET, RUBBER .875 OD X .625 ID	910044	1	COVER, VINYL .25 X 1.5 X 4 GRIP
110219	1	NUT, 7/16-14 LOCK NYLON INSERT	914011	1	ROTOR - RUBBER FINGER, TV40
110415	5	BOLT, 1/4-28 X .625	923009	1	MOTOR - 1.29 CID, ROTOR DRIVE
110435	1	BOLT, 3/8-16 X 1.5	942080	1	BEARING, 1" 2 BOLT FLANGE
110534	1	BOLT, 7/16-14 X 4.75	970230	1	BROOM MOTOR SPACER
110535	4	BOLT, 7/16-14 X 1.5	970821	1	ARM - TORQUE, ROTOR, TV40
110618	1	NUT, 3/8-16 LOCK NYLON INSERT	975614	1	LEFT BROOM ARM WLDMNT
110641	4	NUT, 7/16-14	975615	1	BROOM LIFT WLDMNT
110667	5	WASHER, 1/4" LOCK	975616	1	RIGHT BROOM ARM WLDMNT
110670	6	WASHER, 7/16" FLAT STANDARD	975623	1	BROOM LATCH WLDMNT
110671	4	WASHER, 7/16" LOCK			
110676	2	WASHER, 3/8" FLAT STANDARD			
120319	2	ADAPTER, 6MJ-6MB			
410928	1	BEARING, SLAT DRIVE 1.25 SHAFT			
500231	2	GREASE ZERK, 1/4-28 45deg			
510254	2	SetScrew, 5/16-18 X 0.5			

PARTS LIST	
ITEM	DESCRIPTION
1	NUT, 5/16-18 LOCK (NYLON)
2	FINGER - RUBBER
3	CLAMP - RUBBER FINGER
4	ROTOR - FINGER, RUBBER, WELDMENT

HOPPER & RETURN SCREEN

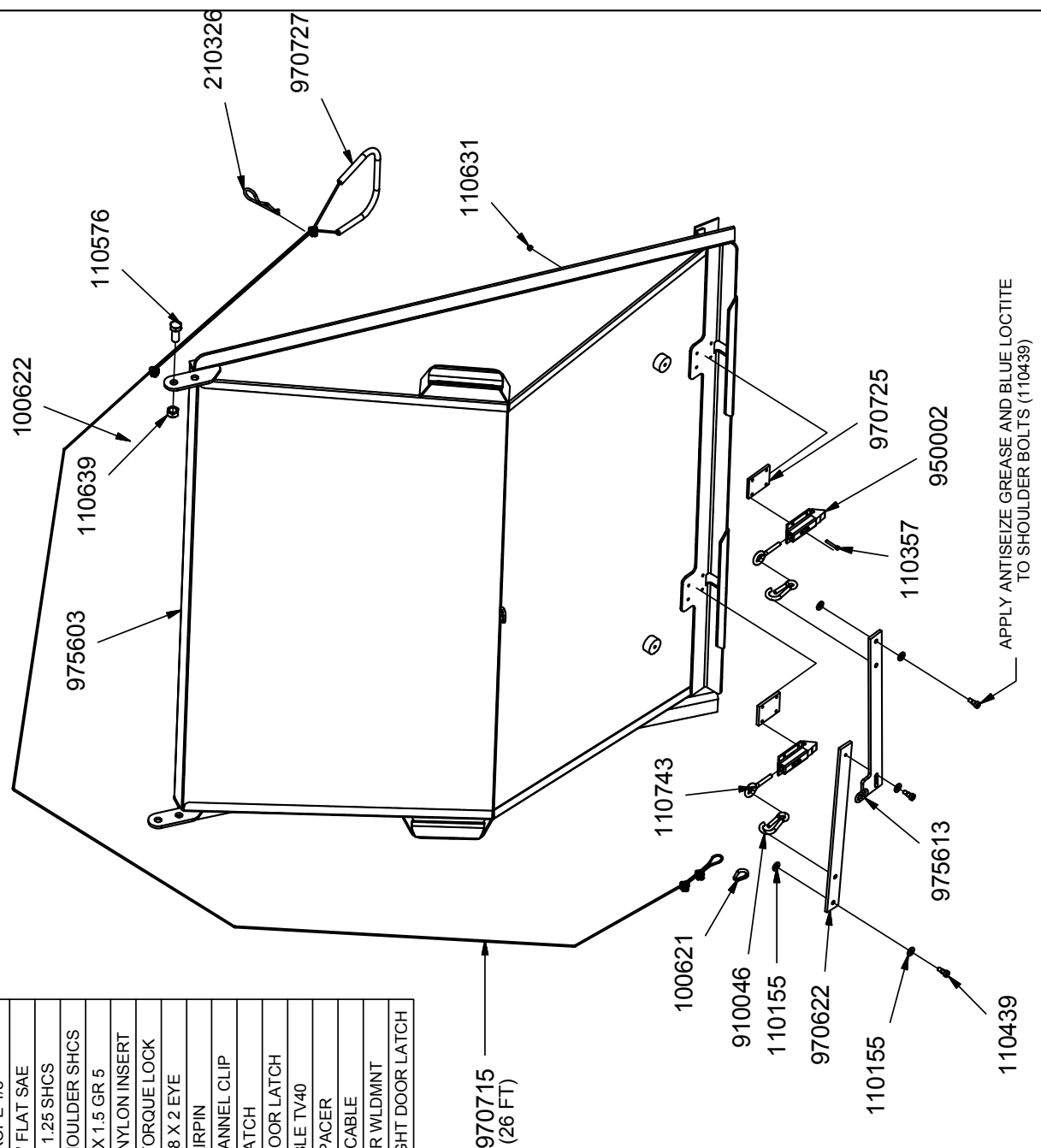
Parts List		
PART #	QUANTITY	DESCRIPTION
100623	9 FT.	SEAL
110020	12	Bolt, 5/16-18 X 0.75 in Carriage
110305	2	Pin, Lynch 7/16 x 1 3/4
110423	4	BOLT, 5/16-18 X 1.0
110440	4	BOLT, 3/8-16 X 1, WIZ FLANGE
110603	4	NUT, 5/16-18 LOCK (NYLON)
110606	12	NUT, 5/16-18 WIZ FLANGE
110845	6	NUT, 3/8-16 WIZ FLANGE
110873	8	WASHER, 1/4" FLAT STANDARD
311691	2	SIGHT GLASS, HOPPER
311692	2	Backing Plate, Sight Glass
710586	8	SCREW, 1/4 X 1 TEK SELF-TAP
942161	2	PIN, STABILIZER
970678	6	LATCH SHIM
970729	1	DEBRIS FLAP-RETURN SCREEN
970733	2	STRIKE PLATE
975600	1	HOPPER
975606	1	RETURN SCREEN W/LD/MNT



4/21/2014

Parts List		
PART #	QUANTITY	DESCRIPTION
100621	1	THIMBLE, WIRE ROPE 1/8"
100622	4	CLIP, WIRE ROPE 1/8"
110155	5	WASHER, 3/8" FLAT SAE
110357	8	BOLT, 10-24 X 1.25 SHCS
110439	3	BOLT, 3/8 X 3/8 SHOULDER SHCS
110576	2	BOLT, 5/8-11 X 1.5 GR 5
110631	8	NUT, 10-24 LOCK NYLON INSERT
110639	2	NUT, 5/8-11, UNITORQUE LOCK
110743	2	BOLT, 5/16-18 X 2 EYE
210326	1	CLIP, HAIRPIN
910046	2	ENGAGING CHANNEL CLIP
950002	2	DOOR LATCH
970622	1	LEVER, LEFT DOOR LATCH
970715	1	LATCH CABLE TV40
970725	2	LATCH SPACER
970727	1	HANDLE, CABLE
975603	1	HOPPER DOOR WLDMNT
975613	1	LEVER WLDMNT, RIGHT DOOR LATCH

HOPPER DOOR & LATCH

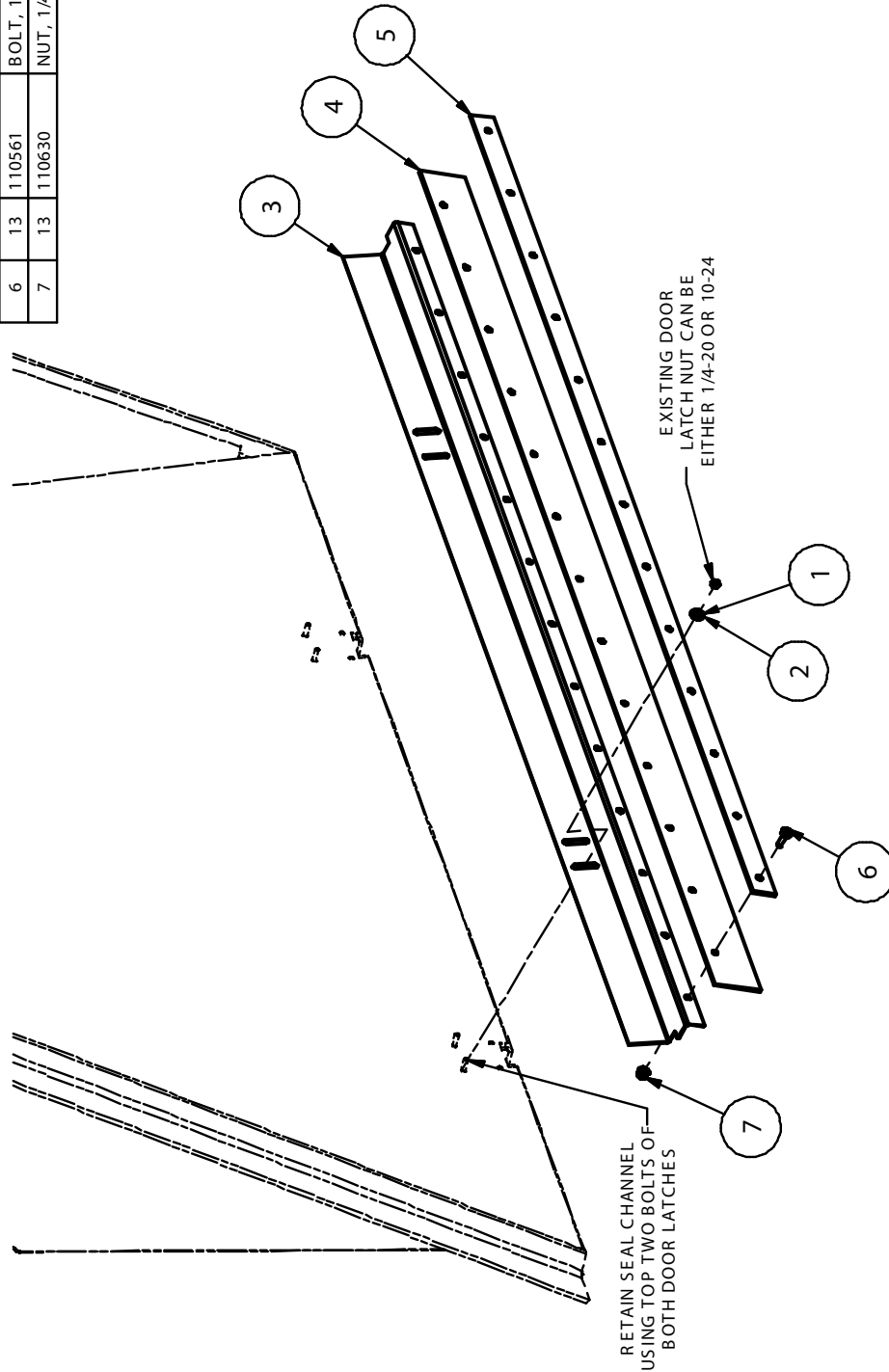


10/9/2012

975629 - TV40 DOOR SEAL ASSEMBLY

Parts List

ITEM	QTY	PART #	DESCRIPTION
1	4	110090	WASHER, #10 FLAT STANDARD
2	4	110298	WASHER, 1/4" FLAT SAE
3	1	970744	ZCHANNEL, DOOR SEAL
4	1	972017	DOOR SEAL
5	1	970745	BACKING PLATE, DOOR SEAL
6	13	110561	BOLT, 1/4-20 X .75
7	13	110630	NUT, 1/4-20 LOCK (NYLON INSERT)



Instructions:

- 1) Remove nuts from top two bolts of each latch.
- 2) Use top two bolts of each latch to hold "Z" shaped seal assembly.
- 3) Set seal in center of slot initially. Adjust as needed. The seal should have good contact with hopper floor.

Parts List		HUB ASSEMBLY (510235) PARTS			
PART #	QTY	DESCRIPTION	PART #	QTY	DESCRIPTION
110219	9	NUT, 7/16-14 LOCK NYLON INSERT	110617	4	NUT, 1/2-20 LUG
110304	1	PIN, LOCK 3/8 X 2.5 SQ	510465	2	BEARING CUP, 1.98 X .42
110319	58	NUT, 5/16-18 U-TYPE .75L	510466	2	BEARING CONE, TAPER 1.0 X .58
110361	2	BOLT, 1-8 X 5.5	510467	1	SEAL, CR 12407
110428	2	BOLT, 1/2-13 X 3.0	510469	1	DUST CAP
110444	56	BOLT, 5/16-18 X 0.75, WIZ FLANGE	511073	1	HUB
110528	6	BOLT, 7/16-14 X 1.0			
110602	2	NUT, 1-8 LOCK NYLON INSERT			
110613	2	NUT, CASTLE 3/4-16			
110615	4	NUT, 1/2-13, UNITORQUE LOCK			
110678	2	WASHER, 3/4 FLAT SAE			
510463	2	COTTER PIN, 1/8 X 1.25			
902175	1	GRIP, HANDLE 7/8" RND X 4.56"			
912100	1	BALL COUPLER, 2"			
942160	1	RATCHET JACK			
943051	2	TIRE & WHEEL ASSY, 9.5-8 x 18 TURF			
970722	1	MOUNT, BELT GUARD			
975601	1	HITCH ASSY W/DMNT			
975604	1	BELT GUARD			
975607	1	FRAME ASSY			
975610	1	JACK STAND W/DMNT			
510235	2	HUB ASSEMBLY			

TV40

DECALS

902146 LOWER BROOM

902084 **TURBO VAC**
Turf Sweeper

902095 **TURBO VAC**
Turf Sweeper

902085 **TV40**

902086 RIGHT SIDE

902087 LOWER BROOM

902088 LOWER BROOM

902089 LOWER BROOM

902090 LOWER BROOM

902091 LOWER BROOM

902092 LOWER BROOM

902093 LOWER BROOM

902094 LOWER BROOM

902095 LOWER BROOM

902096 LOWER BROOM

902097 LOWER BROOM

902098 LOWER BROOM

902099 LOWER BROOM

902100 LOWER BROOM

902101 LOWER BROOM

902102 LOWER BROOM

902103 LOWER BROOM

902104 LOWER BROOM

902105 LOWER BROOM

902106 LOWER BROOM

902107 LOWER BROOM

902108 LOWER BROOM

902109 LOWER BROOM

902110 LOWER BROOM

902111 LOWER BROOM

902112 LOWER BROOM

902113 LOWER BROOM

902114 LOWER BROOM

902115 LOWER BROOM

902116 LOWER BROOM

902117 LOWER BROOM

902118 LOWER BROOM

902119 LOWER BROOM

902120 LOWER BROOM

902121 LOWER BROOM

902122 LOWER BROOM

902123 LOWER BROOM

902124 LOWER BROOM

902125 LOWER BROOM

902126 LOWER BROOM

902127 LOWER BROOM

902128 LOWER BROOM

902129 LOWER BROOM

902130 LOWER BROOM

902131 LOWER BROOM

902132 LOWER BROOM

902133 LOWER BROOM

902134 LOWER BROOM

902135 LOWER BROOM

902136 LOWER BROOM

902137 LOWER BROOM

902138 LOWER BROOM

902139 LOWER BROOM

902140 LOWER BROOM

902141 LOWER BROOM

902142 LOWER BROOM

902143 LOWER BROOM

902144 LOWER BROOM

902145 LOWER BROOM

902146 LOWER BROOM

902147 LOWER BROOM

902148 LOWER BROOM

902149 LOWER BROOM

902150 LOWER BROOM

902151 LOWER BROOM

902152 LOWER BROOM

902153 LOWER BROOM

902154 LOWER BROOM

902155 LOWER BROOM

902156 LOWER BROOM

902157 LOWER BROOM

902158 LOWER BROOM

902159 LOWER BROOM

902160 LOWER BROOM

902161 LOWER BROOM

902162 LOWER BROOM

902163 LOWER BROOM

902164 LOWER BROOM

902165 LOWER BROOM

902166 LOWER BROOM

902167 LOWER BROOM

902168 LOWER BROOM

902169 LOWER BROOM

902170 LOWER BROOM

902171 LOWER BROOM

902172 LOWER BROOM

902173 LOWER BROOM

902174 LOWER BROOM

902175 LOWER BROOM

902176 LOWER BROOM

902177 LOWER BROOM

902178 LOWER BROOM

902179 LOWER BROOM

902180 LOWER BROOM

902181 LOWER BROOM

902182 LOWER BROOM

902183 LOWER BROOM

902184 LOWER BROOM

902185 LOWER BROOM

902186 LOWER BROOM

902187 LOWER BROOM

902188 LOWER BROOM

902189 LOWER BROOM

902190 LOWER BROOM

902191 LOWER BROOM

902192 LOWER BROOM

902193 LOWER BROOM

902194 LOWER BROOM

902195 LOWER BROOM

902196 LOWER BROOM

902197 LOWER BROOM

902198 LOWER BROOM

902199 LOWER BROOM

902200 LOWER BROOM

902201 LOWER BROOM

902202 LOWER BROOM

902203 LOWER BROOM

902204 LOWER BROOM

902205 LOWER BROOM

902206 LOWER BROOM

902207 LOWER BROOM

902208 LOWER BROOM

902209 LOWER BROOM

902210 LOWER BROOM

902211 LOWER BROOM

902212 LOWER BROOM

902213 LOWER BROOM

902214 LOWER BROOM

902215 LOWER BROOM

902216 LOWER BROOM

902217 LOWER BROOM

902218 LOWER BROOM

902219 LOWER BROOM

902220 LOWER BROOM

902221 LOWER BROOM

902222 LOWER BROOM

902223 LOWER BROOM

902224 LOWER BROOM

902225 LOWER BROOM

902226 LOWER BROOM

902227 LOWER BROOM

902228 LOWER BROOM

902229 LOWER BROOM

902230 LOWER BROOM

902231 LOWER BROOM

902232 LOWER BROOM

902233 LOWER BROOM

902234 LOWER BROOM

902235 LOWER BROOM

902236 LOWER BROOM

902237 LOWER BROOM

902238 LOWER BROOM

902239 LOWER BROOM

902240 LOWER BROOM

902241 LOWER BROOM

902242 LOWER BROOM

902243 LOWER BROOM

902244 LOWER BROOM

902245 LOWER BROOM

902246 LOWER BROOM

902247 LOWER BROOM

902248 LOWER BROOM

902249 LOWER BROOM

902250 LOWER BROOM

902251 LOWER BROOM

902252 LOWER BROOM

902253 LOWER BROOM

902254 LOWER BROOM

902255 LOWER BROOM

902256 LOWER BROOM

902257 LOWER BROOM

902258 LOWER BROOM

902259 LOWER BROOM

902260 LOWER BROOM

902261 LOWER BROOM

902262 LOWER BROOM

902263 LOWER BROOM

902264 LOWER BROOM

902265 LOWER BROOM

902266 LOWER BROOM

902267 LOWER BROOM

902268 LOWER BROOM

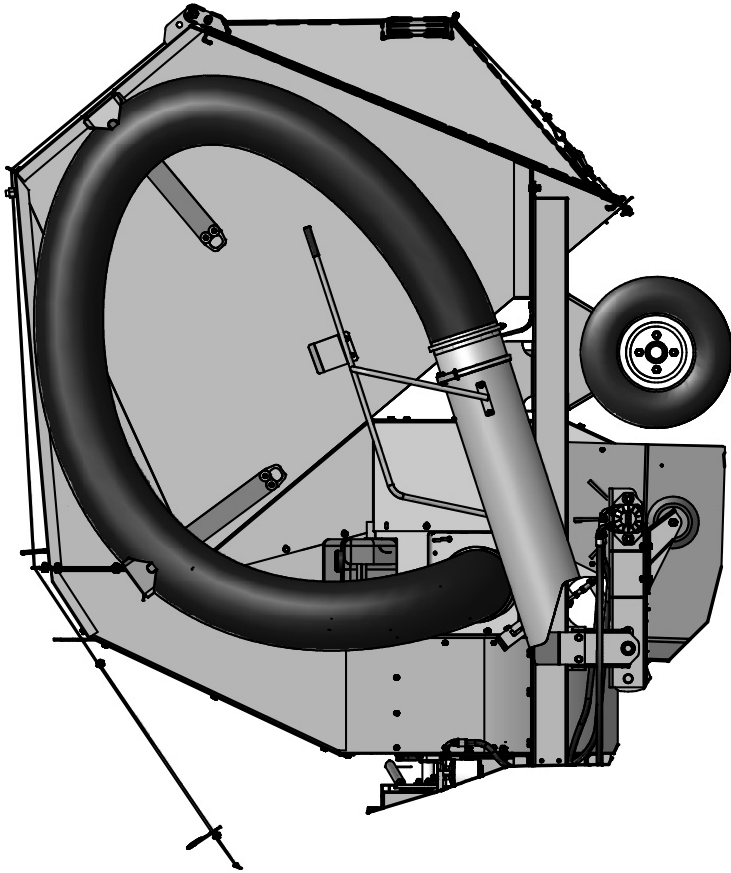
902269 LOWER BROOM

902270 LOWER BROOM

902271 LOWER BROOM

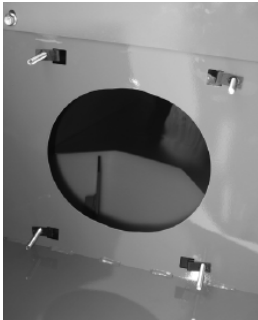
902272 LOWER BROOM

REMOTE HOSE OPTION - TV40



Installation Instructions:

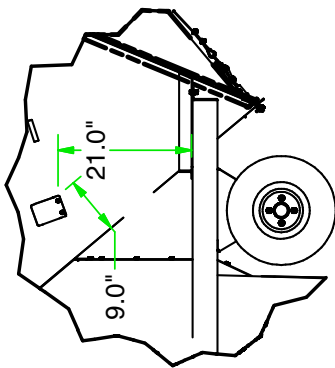
1. Remove bolts and plate covering hole in TV40 frame cut for hose option.
2. Thread 5/16" x 2 1/2" bolts (4) into fasteners from inside out.



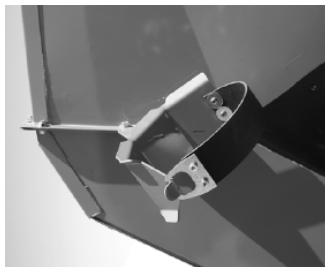
3. Lay slide door onto rear bolts and place hose adapter on top.
4. Use a spring, flat washer and wing nut on each bolt (4).

PART #	QUANTITY	DESCRIPTION
102022	1	COVER, VINYL 5/8" X 4 3/4"
110069	6	WASHER, 5/16" FLAT SAE
110174	16	NUT, 1/4-20, UNITORQUE LOCK
110311	2	CLAMP, HOSE #912 8.00"
110327	5	NUT, 5/16 WING
110423	2	BOLT, 5/16-18 X 1.0
110427	4	BOLT, 5/16-18 X 2.5 TAP
110451	4	BOLT, 1/4-20 X .5, MSTRUSS HEAD
110561	6	BOLT, 1/4-20 X .75
110600	2	NUT, 5/16-18, UNITORQUE LOCK
110623	1	NUT, 5/16-24
110656	8	WASHER, 3/8" FLAT SPECIAL
110667	4	WASHER, 1/4 LOCK
110673	4	WASHER, 1/4" FLAT STANDARD
110674	2	WASHER, 5/16" LOCK
110731	1	KEY, 1/8 X 1/8 X 1
110772	12	SCREW, 1/4-20 X 1 SS PHILLIPS PAN HEAD
211132	2	BUSHING, .625 X .5
510176	1	COTTER PIN, 1/8 X 1
510460	1	SET SCREW, 1/4-20
550046	1	CLEVIS YOKE, 5/16-24
550048	1	CLEVIS PIN, 5/16
902010	1	HOSE, 8 INCH
902113	1	CLAMP, NOZZLE SWIVEL
902114	1	ADAPTOR, HOSE SWIVEL
910044	1	COVER, VINYL .25 X 1.5 X 4 GRIP
970628	2	FLAP PIVOT BLOCK
970765	1	BRACKET, NOZZLE SUPPORT
970768	1	CRADLE, REAR HOSE
970769	1	HANGER, NOZZLE HANDLE
970770	2	RING, HOSE HANGER
970774	1	SLIDE, HOSE OPTION
970775	2	HANGER STRAP
970779	1	NOZZLE TUBE
972018	4	SPRING, COMPRESSION
975132	1	FRONT HOSE CRADLE WELDMENT
975133	1	SIDE HOSE ADAPTER WELDMENT
975134	1	NOZZLE HANDLE WELDMENT
975608	1	FLAP WELDMENT
975609	1	FLAP ARM WELDMENT
975612	1	FLAP HANDLE WELDMENT

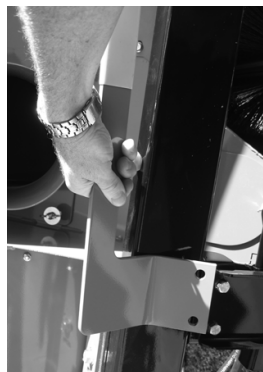
5. Locate nozzle hangers and hose cradles as indicated.



NOZZLE HANDLE HANGER



FRONT HOSE CRADLE



NOZZLE SUPPORT

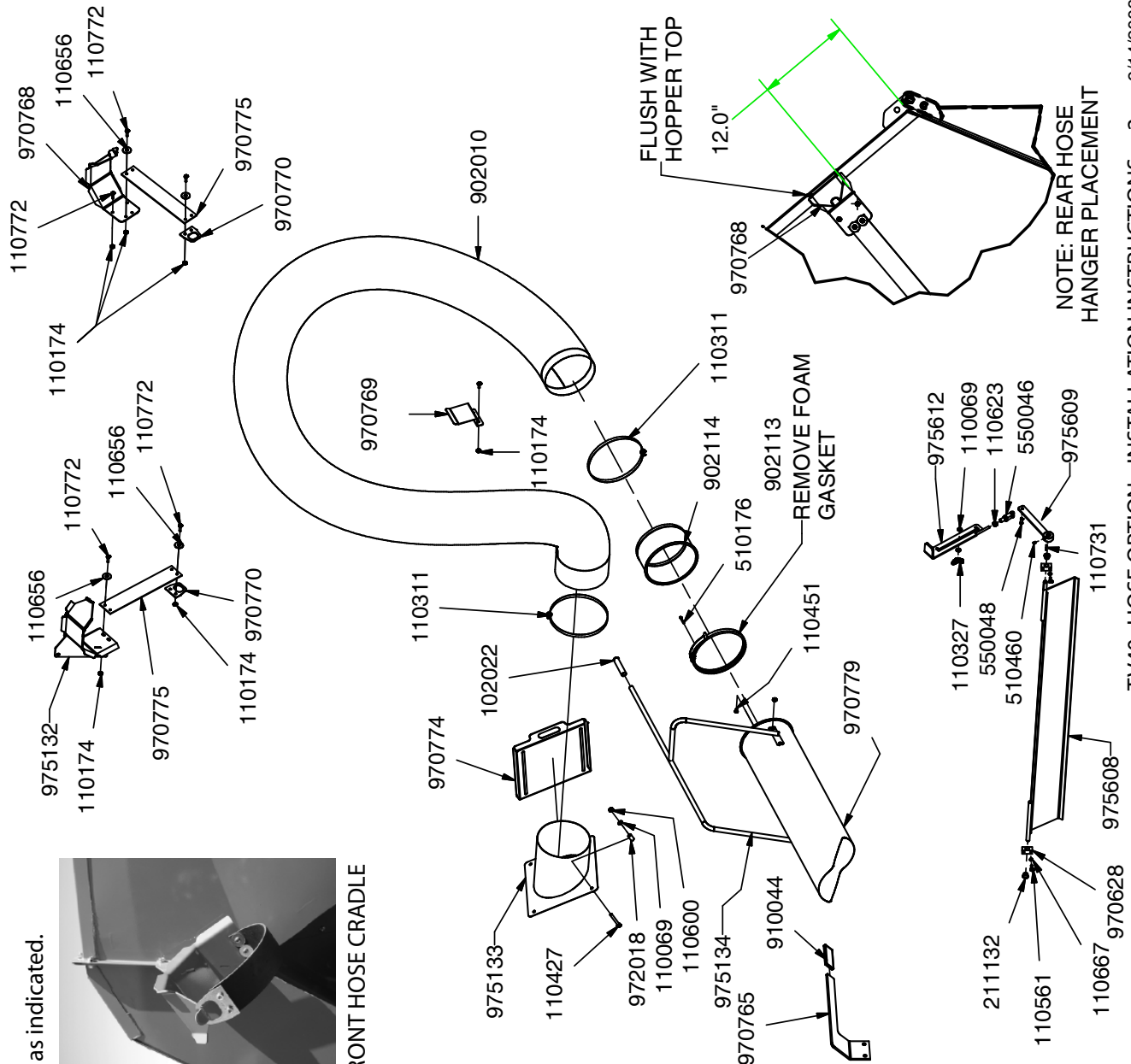
6. Install hose and nozzle as indicated.
7. Remove knock-outs from right and left side of blower housing.
8. Install flap and flap handle as indicated.



KNOCK-OUTS



FLAP HANDLE



NOTE: REAR HOSE
HANGER PLACEMENT

HARPER®
TURF EQUIPMENT



6.2

NOTES

Harper Industries, Inc.
151 E. Highway 160
Harper, KS 67058

Telephone: 620-896-7381
Toll-Free: 800-835-1042
Fax: 620-896-7129

Website: www.harperindustries.com

E-mail: info@harperindustries.com