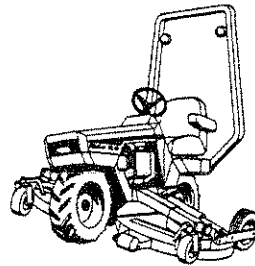


**MC70**



# DEWEZE MANUFACTURING, INC.

## WARRANTY POLICY

### STATEMENT OF WARRANTY

DewEze Mfg., Inc. warrants to each purchaser of DewEze new equipment from an authorized dealer or representative, that such equipment to be free from manufacturing defects in normal service for a period of ONE YEAR, or 250 hours, WHICHEVER COMES FIRST, commencing with delivery to the original user.

The obligation of DewEze Mfg., Inc. under this warranty is expressly limited, at our option, to replacement or repair at DewEze Mfg., Inc., Harper, Kansas, 67058, or at a service facility designated by DewEze Mfg., Inc., of such part or parts as inspection shall disclose to have been defective. This warranty does not apply to defects caused by damage or unreasonable use (including failure to provide reasonable and necessary maintenance), or to tires, belts, blades, lights, or other normal maintenance items while in the possession of the consumer.

DewEze Mfg., Inc., makes no warranty with respect to trade accessories. They are subject to the warranties of their respective manufacturers.

The Kohler engine is subject to the Kohler factory warranty as spelled out in the Kohler engine OWNER'S MANUAL and must be serviced by an authorized Kohler service facility.

ANY IMPLIED OR STATUTORY WARRANTIES, INCLUDING ANY WARRANTY OF MERCHANTABILITY OR FITNESS FOR A PARTICULAR PURPOSE, ARE EXPRESSLY LIMITED TO THE DURATION OF THIS WRITTEN WARRANTY. DewEze Mfg., Inc. makes no other express warranty, nor is anyone authorized to make any in behalf of DewEze Mfg., Inc.

For information on warranty procedures please write or call the factory direct.

DEWEZE MANUFACTURING, INC.  
RT. 2, BOX 78  
HARPER, KANSAS 67058

TOLL FREE 800-835-1042  
IN KANSAS 316-896-7381  
FAX 316-896-7129

## CONTENTS

To the owner .....	1
Safety section .....	2
Mower description .....	3
Pre-start instructions .....	4
Controls .....	5
Operating instructions .....	6
Driving hints .....	7
Mower deck service .....	8
Cutting height adjustment .....	9
Leveling adjustment .....	10
Service schedule .....	11-12
Service chart .....	13
Trouble shooting .....	14-15

## PARTS LISTS

Engine .....	16
Electrical .....	17-18
Hydraulic system .....	19-20
Hydraulic schematic .....	21
Blade spindle .....	22
Mower deck assembly .....	23
P.T.O. shaft and cover .....	24
Gearbox & Sprocket assembly .....	25
Steering head assembly .....	26
Foot control assembly .....	28
Mower chassis .....	29-30
Decal locations .....	31-33

## REGISTRATION

Date of Purchase \_\_\_\_/\_\_\_\_/\_\_\_\_

Dealers Name \_\_\_\_\_ Phone No. \_\_\_\_\_

Serial Number-Machine \_\_\_\_\_

Serial Number-Engine \_\_\_\_\_

For 1991½ series MC70 Mowers, beginning serial number B066.  
(Mowers with swinging blades)

TO THE DEWEZE MC-70 OWNER OR OPERATOR:

It is important that you take the time to read this manual carefully before operating the machine. You should be familiar with all safety precautions and operating and service procedures. Operator knowledge and familiarity will make a difference in how the machine will perform.

This OWNERS MANUAL was written to help you realize the full benefits of the machine and to help you maintain it so it will give you long and productive service.

The objective of DewEze Manufacturing in the design of the MC-70 was to create a mowing machine which can function as safely and comfortably on slopes and inclines as it can on level ground. The results are a mowing machine which will automatically adjust itself to keep the operator in a vertical position on all slopes up to 30 degrees.

If you have any questions that are not covered in this manual, please contact us at the following address. We will be happy to assist you in any way we can!

DEWEZE MANUFACTURING, INC.

Rt. 2, Box 78  
Harper, KS. 67058

Phone: 800-835-1042 (out of state)  
316-896-7381 (in Kansas)  
316-896-7129 Fax

## SAFETY SECTION

!!!! WARNING !!!!

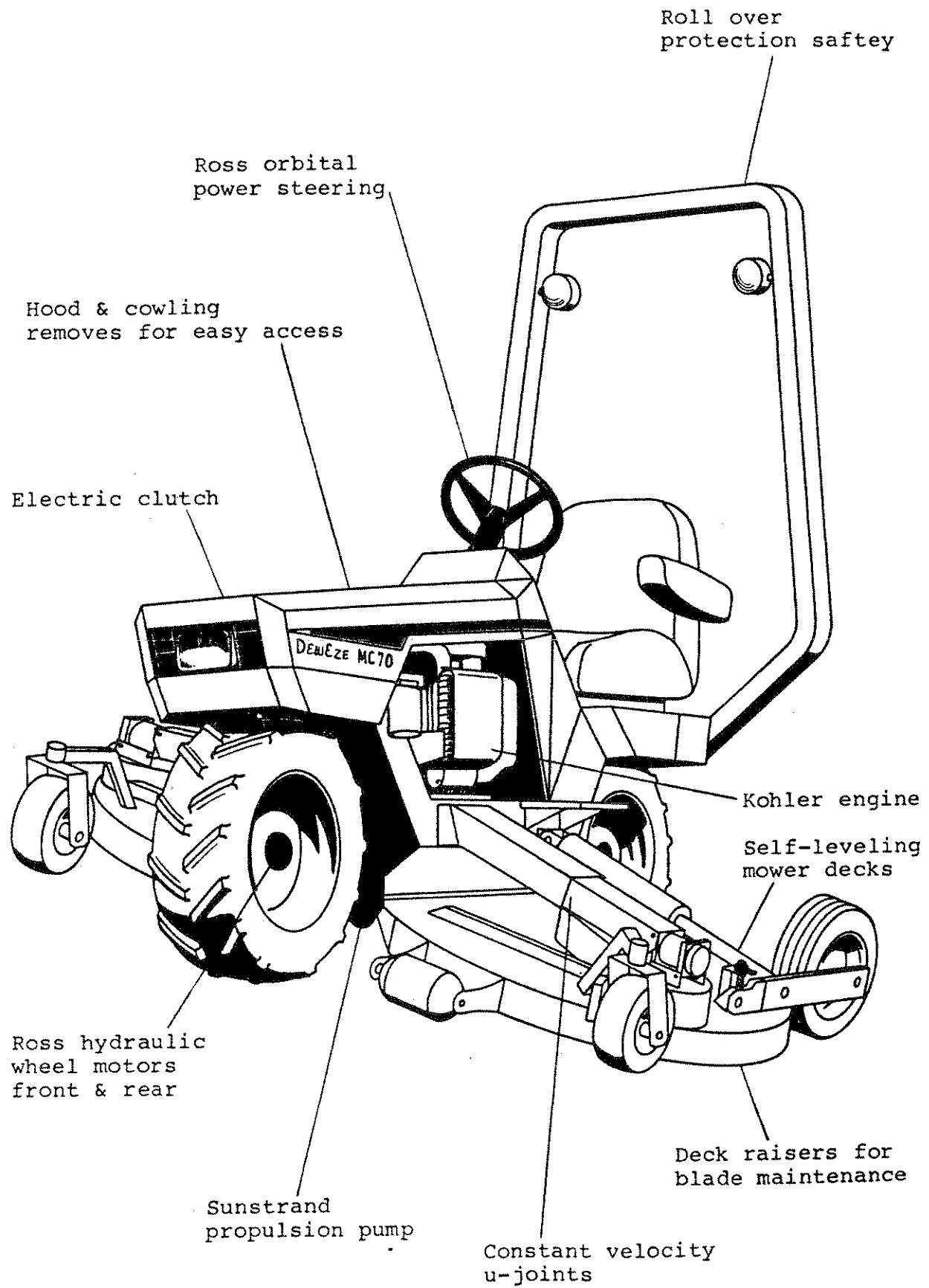
DO NOT OPERATE THIS MACHINE  
UNTIL YOU HAVE READ AND UNDER-  
STOOD THIS OPERATOR'S MANUAL

1. Never allow persons to operate this machine without proper instruction, or allow children to operate the machine.
2. Never carry passengers.
3. Never direct discharge of material from the mower deck toward bystanders.
4. If leveling system malfunctions, immediately turn down hill to level ground and stop machine.
5. Never drive on a hill that is steeper than 30 degrees.
6. SLOW DOWN when turning downhill. Fast turns may not allow leveling system to function properly.
7. Before making repairs, maintenance, or adjustment, turn blade clutch to OFF. Turn the engine OFF. Remove the ignition key.
8. Before dismounting, turn off blades. Put foot control in neutral position and set parking brake. Stop engine and remove ignition key.
9. Relieve all pressure in the hydraulic system before disconnecting or working on hydraulic lines.
10. Keep all shields in place during machine operation.
11. Do not place hands or feet under deck.
12. Do not fill fuel tank while engine running, or hot.
13. Place block under deck for support before performing maintenance on mower blades with deck raised.
14. Safety decals must be replaced on machine if missing or illegible.

## OPERATING TIPS

1. ALWAYS CHECK ENGINE OIL BEFORE STARTING.
2. MAKE SURE YOU HAVE PLENTY OF FUEL.
3. VISUALLY CHECK TIRES.
4. READ SAFETY DECALS.
5. ADJUST SEAT TO COMFORTABLE POSITION.
6. ALWAYS USE GOOD JUDGEMENT WHEN USING THIS MACHINE.
7. CHECK HYDRAULIC OIL LEVEL BEFORE STARTING.
8. CARRY HEIGHT ADJUSTMENT WRENCH, AND SHEAR BOLTS AND WRENCHES IN TOOL POUCH ON SEAT BACK.

MC-70 FEATURES



## PRE-START INSTRUCTIONS

BEFORE STARTING:

Be sure the engine is properly filled with oil and fuel.

CRANKCASE OIL: Fill the crankcase with an oil that meets the API (American Petroleum Institute) service designation SF. Do not mix brands or grades of motor oil. Recommended oil numbers for expected temperatures are listed in the service schedule on page 11. Straight 30-weight is recommended.

**CAUTION:** DO NOT OVERFILL THE CRANKCASE. Overfilling causes the oil to foam and enter the breather system. DO NOT USE SERVICE DS OIL OR DAMAGE TO THE ENGINE COULD OCCUR.

!!!! DANGER !!!!!  
DO NOT REMOVE THE DIPSTICK WHILE THE  
ENGINE IS RUNNING. Oil may blow out  
the fill tube causing injury.

HYDRAULIC OIL: Make sure that the hydraulic oil in the reservoir is at the proper level on dipstick. If not, fill with 10W30 motor oil.

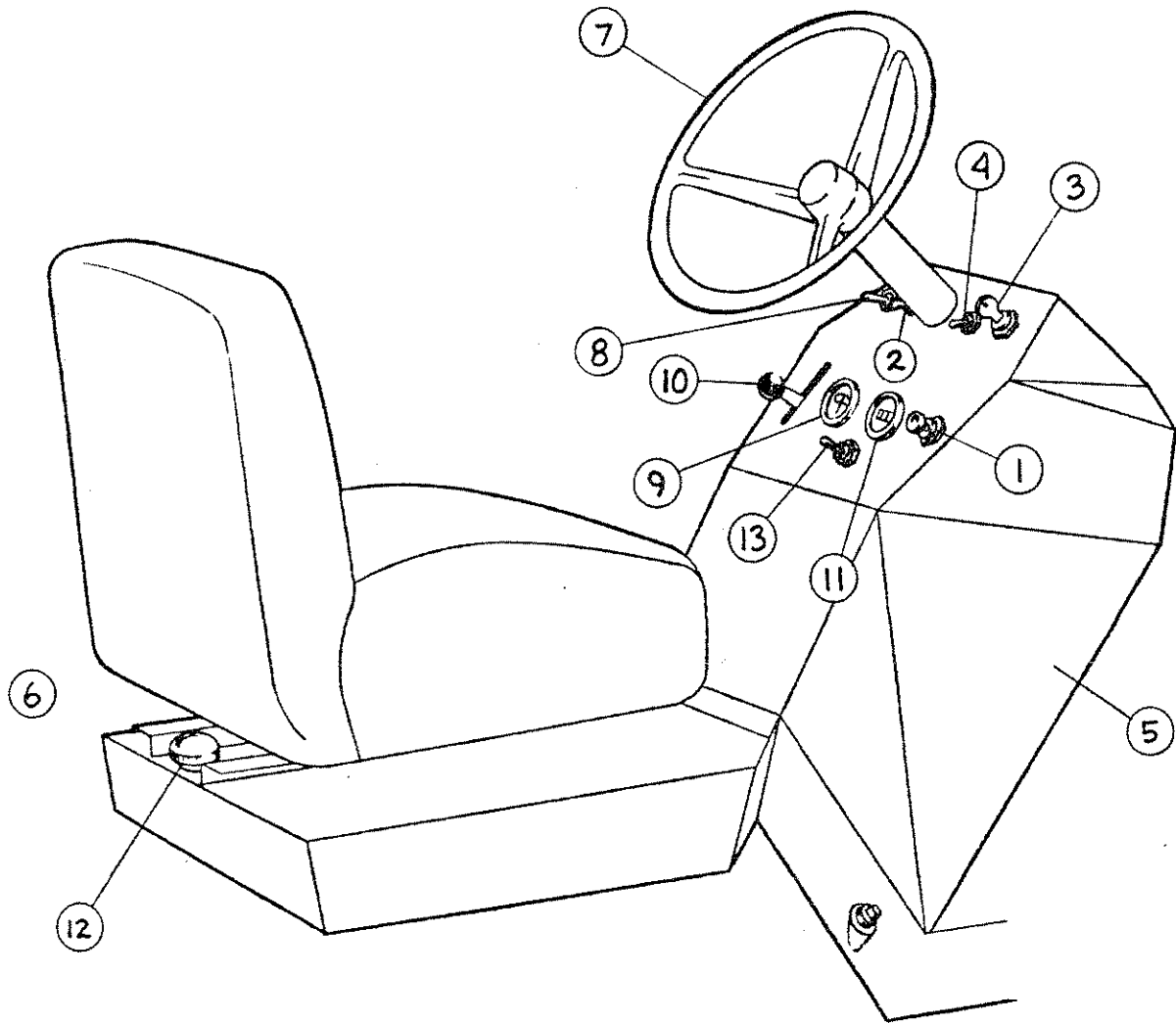
**RECOMMENDED FUEL:** Use clean, fresh, regular grade unleaded gasoline with an octane rating of 87 or higher. Using unleaded gasoline results in less engine maintenance. Avoid using fuel that has any alcohol content. Refer to page two of the engine manufacturer's manual for further information on fuel.

NOTE: If regular gasoline is used continually, carbon and lead deposits must be removed from the cylinder heads as required because of engine power loss. Unleaded gasoline may be used safely after the lead deposits have been removed.

!!! WARNING !!!  
AVOID POTENTIAL EXPLOSIONS! NEVER  
FILL THE FUEL TANK WHILE THE ENGINE  
IS RUNNING!

INSPECTION: Inspect the engine visually before starting. Check for loose or missing parts and any damage that may have occurred in shipment.

# CONTROLS



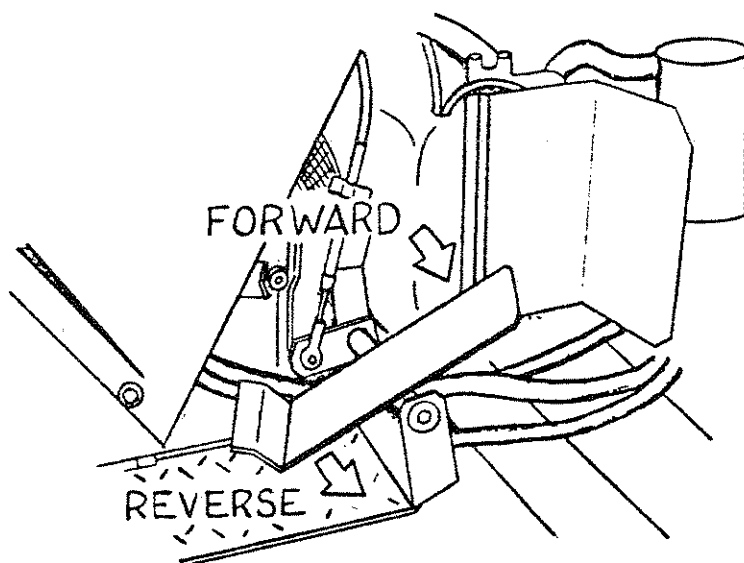
Item	Description
1.	Choke
2.	Blade switch
3.	Ignition switch
4.	Light switch
5.	Cowling
6.	Seat adjustment lever (left side of seat)

Item	Description
7.	Steering Wheel
8.	Leveling switch
9.	Ammeter
10.	Throttle
11.	Hour meter
12.	Fuel fill cap
13.	Manual override switch

STARTING:

1. Put foot control in neutral position.
2. Turn all electrical switches to the OFF position.
3. Move throttle forward about 1/3.
4. Pull the choke all the way out (if engine is cold).
5. Turn the key all the way to the right until the engine starts, then release key.
6. Push the choke most of the way in until the engine warms up, then push completely in.
7. In cold weather, run engine long enough to allow the hydraulic oil to warm up before using the mower.
8. To move forward -- push toe of foot control forward.
9. To move backward -- push heel of foot control down.
9. To STOP -- move the foot control to neutral position.

**CAUTION: ALWAYS MOVE FOOT CONTROL GRADUALLY!**



**IMPORTANT: CHECK FOR SIGNS OF LOOSE BOLTS, BELTS, HOSES, AND OTHER COMPONENTS AFTER ONE HOUR OF OPERATION AND DAILY THEREAFTER.**

## DRIVING THE DEWEZE MC-70

Driving the DEWEZE MC-70 with the automatic leveling device will be a new and different experience. After several minutes of driving, the smooth control and sturdy feel will become comfortable to you. The security of always sitting perfectly upright, and the feel of powerful, positive traction will give you confidence and comfort in most mowing situations. We urge EXTREME CAUTION lest your confidence in these features get you in trouble. REMEMBER: The features of the machine cannot replace good common sense!

### SOME GUIDELINES:

1. Take some time to get used to the handling characteristics of the machine.
2. Always look before backing up.
3. **SLOW DOWN** over rough terrain.
4. **DO NOT** make sharp turns at high speeds.
5. Always keep your feet on the foot-rests while operating the machine.
6. Never attempt to operate the machine when it is malfunctioning.
7. Never attempt to climb slopes greater than 30 degrees.
8. If it is necessary to park the mower on a hill, be sure to **USE THE PARKING BRAKE AND CHOCK THE WHEELS!**
9. Wear appropriate, protective clothing while operating the mower.
10. **NEVER ALLOW PEOPLE IN THE AREA YOU ARE MOWING!**
11. Always avoid mowing over debris that could be projected from the mower discharge and do damage to the machine or anything in the area.
12. **FOR BEST RESULTS, OPERATE THE MOWER ENGINE AT FULL THROTTLE.** This will allow the blades to turn at optimum speed, and the leveling device to be the most responsive. Forward speed is easily controlled with the foot control pedal.

!!!! WARNING !!!!  
SLOW DOWN WHEN TURNING DOWNHILL

FAST TURNS MAY NOT ALLOW LEVELING  
SYSTEM TO FUNCTION PROPERLY

!!!! DANGER !!!!  
TO AVOID PERSONAL INJURY, BEFORE LEAVING  
THE SEAT, ALWAYS:  
- TURN BLADE SWITCH OFF  
- RETURN FOOT CONTROL TO NEUTRAL  
- SHUT OFF ENGINE

## MOWER DECK SERVICE

The DEWEZE MC-70 is equipped with a leveling system override. This override allows you to raise the mower decks for blade maintenance without the need for jacks. It also eliminates the need to crawl under the machine for blade and deck maintenance.

### TO RAISE DECK:

- a. Move foot control to neutral and make sure that the switch for the mower blades is in the OFF position.
- b. Start engine with throttle at idle.
- c. Turn the leveling switch (item 8, page 5) to the ON position.
- d. Dismount the tractor and open the hood.
- e. Move the override lever to the number 1 position.
- f. Push the override switch (item 13, page 5) in the direction you want tractor to lean, away from the deck you wish to raise: hold switch until the tractor lays completely over.
- g. Release the switch and the deck will raise by itself.
- h. Turn the leveling system switch to the OFF position.
- i. TURN ENGINE OFF!

### TO LOWER DECK:

- a. Move the override lever to position 2: deck will lower.
- b. After deck has lowered, move the override lever to position 3.
- c. With the foot control in neutral position, start the engine.
- d. Turn the leveling switch to the ON position: mower will return to the upright position.

## CUTTING HEIGHT ADJUSTMENT

Stabilizer Wheel  
Adjustment  
(Left and Right)

Stabilizer  
Wheel

Height  
Indicators:  
2" Min.  
5" Max.

Adjustment bolt  
(Use wrench provided)

<<< FRONT

MOWER DECK

Drive Wheel  
Height Adjustment  
(Front & Rear)

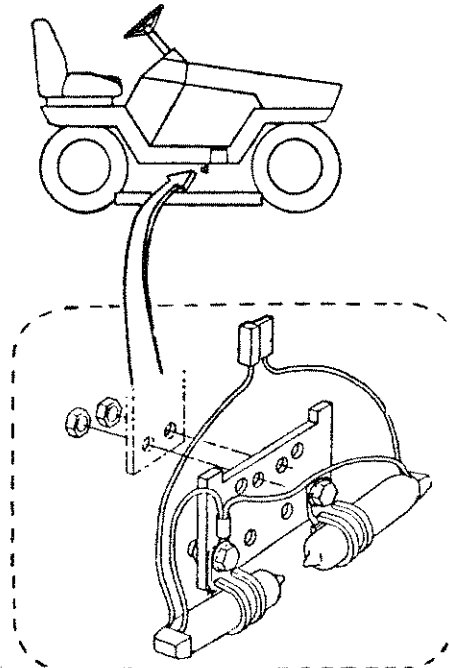
Height  
Indicator Tab  
2" Min.  
5" Max.

Adjustment Bolt  
(Use wrench  
provided)

Wheel Motor

## PROCEDURE FOR MC-70 LEVELING ADJUSTMENT

1. Make sure the mower is set up for level cut and is on level ground.
2. The manual override valve lever (Item 59, page 19) must be in Position 3 for "Normal Operation".
3. Start engine and push throttle control to full open.
4. Turn leveling switch (Item 8, page 5) to ON position.
5. Hold Manual Override Switch (Item 13, page 5) to the left until tractor is leaning fully to the left. Release switch.
6. If tractor does not return to upright, loosen mounting bolt on the LEFT mercury switch. Move outer end of the LEFT mercury switch DOWN slightly. Repeat Step 5 and adjust mercury switch until tractor returns to upright. Tighten mounting bolt.
7. If tractor returns past upright, loosen mounting bolt on the LEFT mercury switch. Move outer end of the LEFT mercury switch UP slightly. Repeat Step 5 and adjust mercury switch until tractor stops at upright. Tighten mounting bolt.
8. Repeat the above procedures, tilting tractor to the RIGHT, and adjusting the RIGHT mercury switch.
9. If tractor continues to move right and left after returning to upright, move the outer end of BOTH mercury switches UP slightly and repeat the above adjusting procedures.



MERCURY SWITCHES  
(Looking from rear of mower)

## SERVICE SCHEDULE

### DAILY

1. Check fuel level ----- Use regular grade unleaded fuel.
2. Check engine oil level --- Use SAE 30 above 32 degrees F.  
Use HD10W40 at or below 32 degrees F.
3. Check hydraulic oil level- Use 15W40 motor oil.
4. Clean engine air pre-  
filter ----- Use warm soapy water and rinse.
5. Visually inspect: ----- Belts, Bolts, Fittings, and hoses  
(see page 10 for (for signs of leaks or looseness);  
locations) Accumulator and Engine (for signs of  
obstruction of air cooling and excess  
dirt).
6. Continually look and listen for signs of hydraulic malfunction  
(excessive noise, sluggish control response, etc.). If signs  
occur STOP IMMEDIATELY or serious damage to hydraulic  
components could occur!  
At the first sign of abnormal hydraulic function  
check the hydraulic oil level. Change hydraulic  
oil filter and refill oil as needed.

### 25 HOUR SERVICE

1. Change engine oil ----- Use SAE 30 above 32 degrees F.  
and filter Use HD10W40 at or below 32 degrees F.  
(Capacity, 1 3/4 Qts. with filter)
2. Clean air filter
3. Check battery water ----- Refill if necessary.  
level.
4. Check oil level in ----- Refill as needed with 90 weight gear  
splitter gear box lube.
5. Visually inspect ----- bolts, hoses, and fittings-- for  
signs of loosening. Keep air filter  
assembly tight. Remove excess dirt  
and debris which restricts air flow.
6. Lubrication ----- Grease front casters, caster swivels,  
steering mechanism, and blade shafts.
7. Check tire pressure ----- 11 to 14 lbs. pressure in  
both front and rear tires.  
50 lbs. in stabilizer tires.  
60 lbs. in front caster tires.
8. U-joints ----- Grease joints.  
Make sure guards are in place.
9. Check outer gear boxes --- keep full of #2 gear lube (grease).

KEEP BLADES SHARP AT ALL TIMES

## SERVICE SCHEDULES (cont.)

### Annual Service Schedule

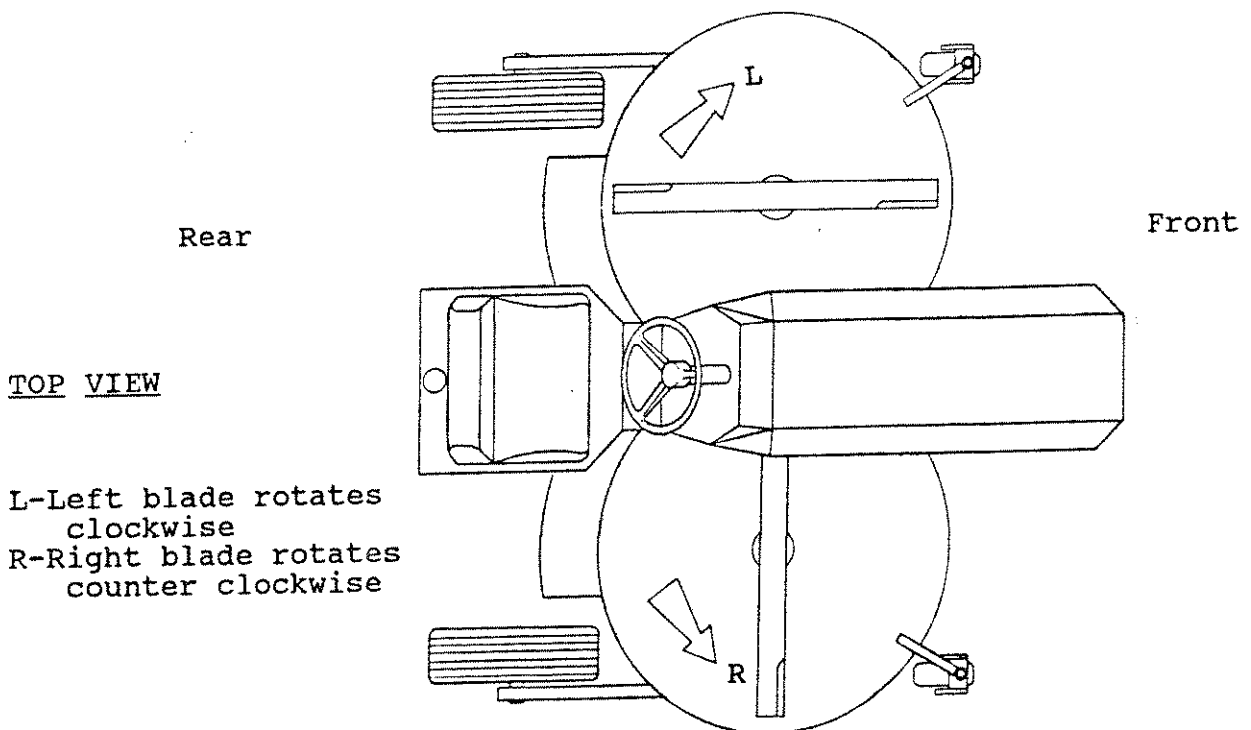
1. Replace hydraulic filter ----- Use a Zinga spin-on filter part annually or every 100 hours no. 520361.
2. Repack stabilizer wheels ----- Use a high quality Bearing Grease
3. Maintain oil level in ----- Use a high quality 90 weight splitter gear box. gear lube.
4. Pack steering pivot bearing with grease.

### For Storage During off season

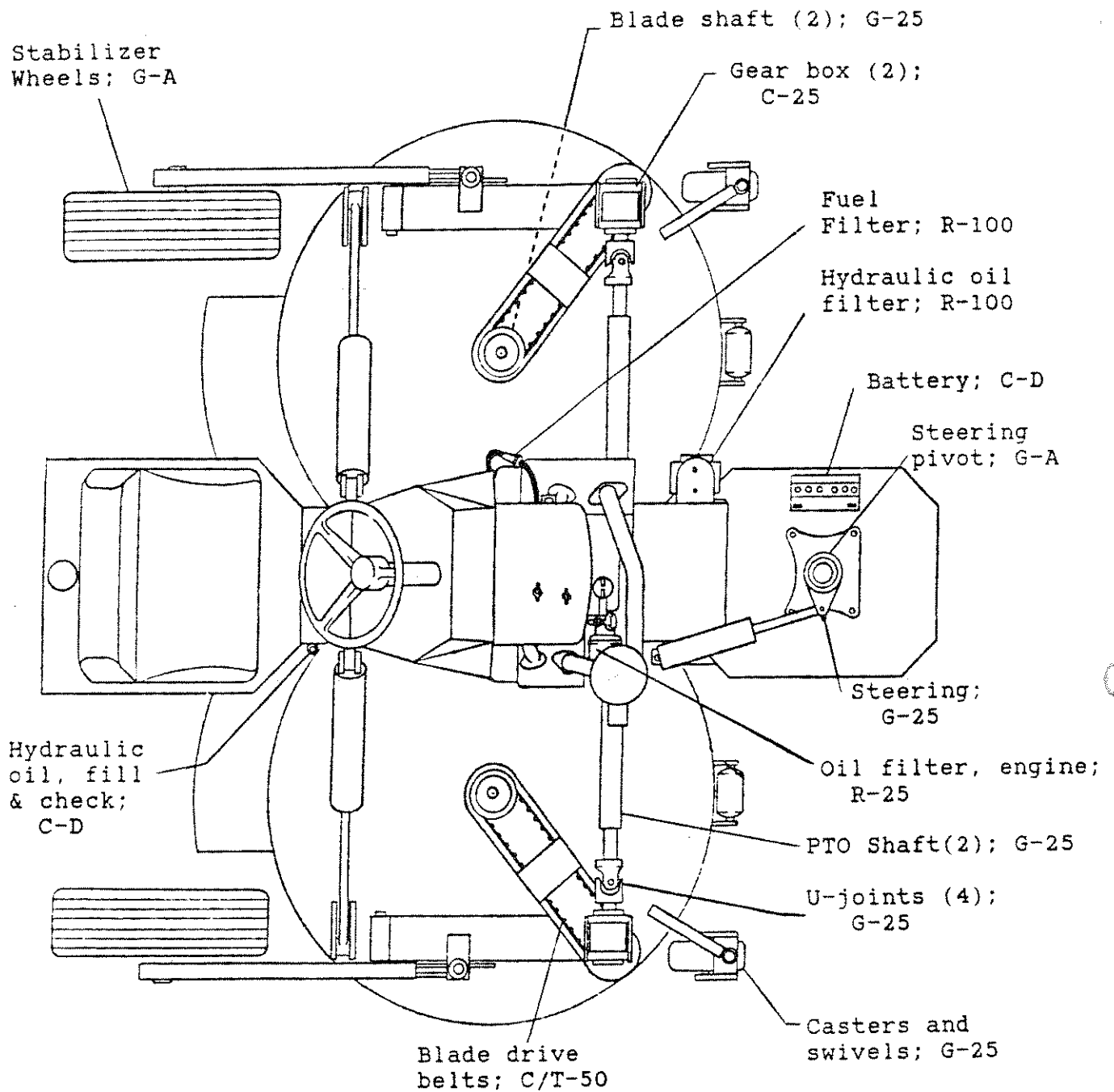
1. Drain fuel tank
2. Maintain tire pressure as specified above.

### BLADE TIMING INSTRUCTIONS (see sketch below)

1. Loosen timing belt adjustment and remove cover plate.
2. Inspect belt for wear -- Replace if worn!
3. Position blades perpendicular to each other as shown.
4. Replace cover.
5. Tighten belt with adjustment screw so that it takes 10 lbs. pressure to depress belt 1/8" at check port in belt shroud.
6. Tighten all bolts (6) securely.



# SERVICE CHART



G=Grease	D=Daily
C=Check	A=Annually
R=Replace	25=Every 25 hours
T=Tighten	50=Every 50 hours
	100=Every 100 hours

## TROUBLE SHOOTING

<u>SYMPTOMS</u>	<u>POSSIBLE CAUSE</u>	<u>REMEDY</u>
1. Engine fails to start	a. Choke not pulled -----	Pull choke
	b. Fuse blown -----	Replace fuse (30 amp)
	c. Dead battery -----	Recharge battery
	d. Dirty fuel filter -----	Replace fuel filter
	e. Out of fuel -----	Fill fuel tank
	f. Foot control not in neutral position -----	Move foot control to neutral.
<hr/>		
2. Loss of engine power	a. Dirty air cleaner -----	Clean or replace
	b. Transmission oil level low -----	Fill tank to proper level
	c. Parking brake too tight ---	Adjust brake
	d. Dirty fuel filter -----	Replace fuel filter
<hr/>		
3. Noisy operation	a. Low oil level in hydraulic tank -----	Refill to proper level
	b. Low hydraulic pressure -----	See your dealer for repairs
	c. Air leak in pump supply line -----	Tighten or replace bad hose or fitting
	d. Low lubricant level in gear boxes -----	Refill with proper lube
	e. Blades out of time -----	See instructions (page 12)
	f. Blade spindle failure ----	Replace bearings
<hr/>		
4. Loss of hydraulic power	a. Low oil level in hydraulic tank -----	Refill to proper level
	b. Low hydraulic pressure -----	See your dealer for repairs
	c. Shuttle valve open -----	Close shuttle valve (No. 73, page 29)

# TROUBLE SHOOTING (cont.)

<u>SYMPTOM</u>	<u>POSSIBLE CAUSE</u>	<u>REMEDY</u>
5. Loss of auto-leveling	a. Fuse blown ----- b. Sensor(s) out of place or loose wire- c. Sensor bad or wire lead broken -- d. Electronic relays malfunctioning ---- e. Solenoid valve not working -----	Replace fuse (30 amp). Re-install sensor and tighten. Replace sensor. Replace bad relay. 1. Operate valve manually to assess cause of problem. 2. Check for dirt inside spools. 3. Replace solenoid.

NOTE: AUTO LEVEL WILL NOT WORK IF STEERING WHEEL IS HELD AGAINST STOP DURING EXTREME RIGHT OR LEFT TURN.

6. Mower blades will not engage	a. operator not seated correctly ----- b. Loose belts----- c. Switch malfunction-----	Sit firmly in seat to contact safety switch. Be sure all belts are tight. Replace switch.
---------------------------------	---	---

## TO MOVE MOWER IN CASE OF ENGINE OR HYDRAULIC POWER FAILURE

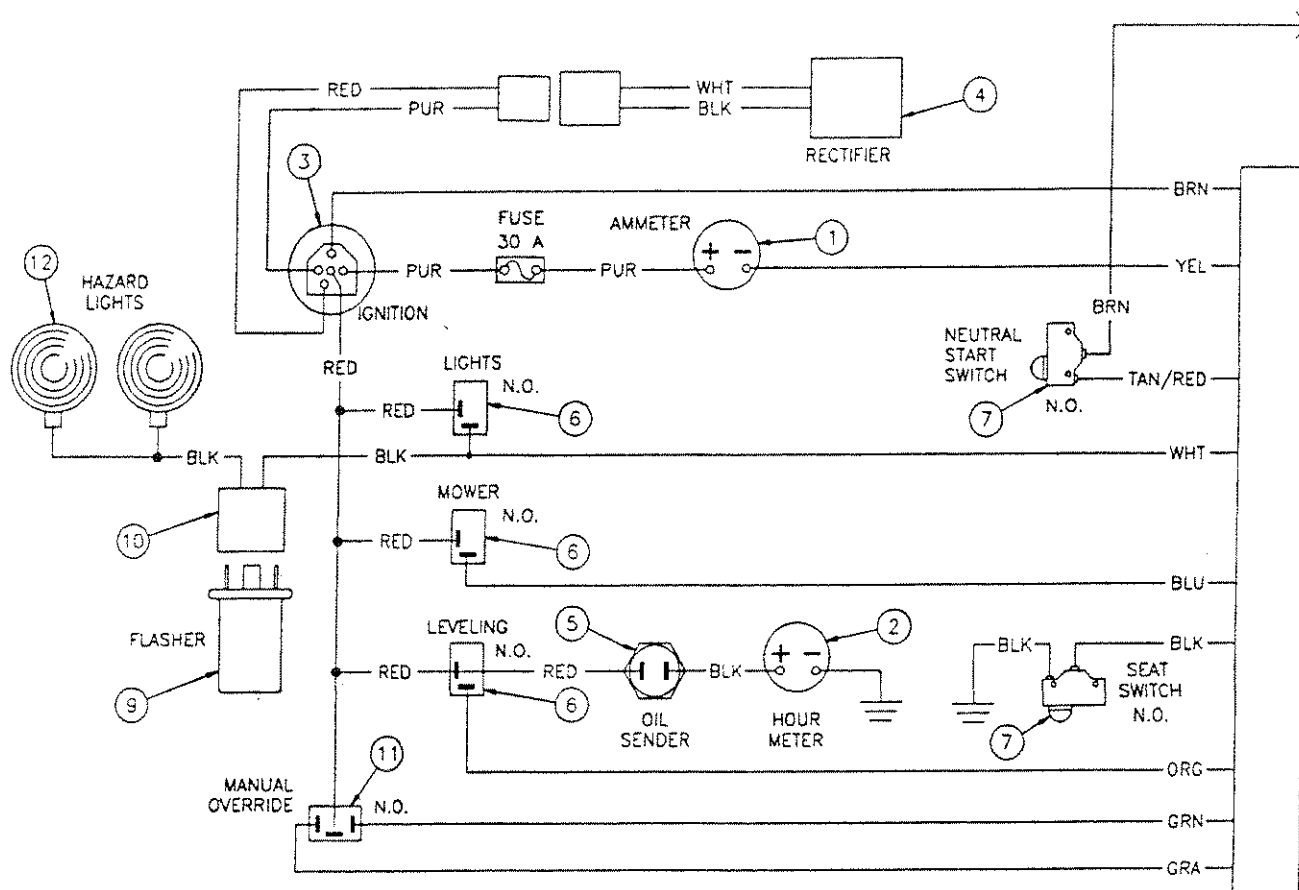
- Open shuttle valve, located under cowling, on left side of mower.
- Move valve handle parallel to the hose to open valve.
- Mower may be moved a short distance with shuttle valve open.
- MOVING THE MOWER AT MORE THAN ONE M.P.H., OR FOR MORE THAN 50 YARDS MAY CAUSE SERIOUS DAMAGE TO THE WHEEL MOTORS AND HYDRAULIC PUMPS.
- Close shuttle valve before operating mower.

This exploded view diagram illustrates the assembly of a Honda 1.5L engine. The central component is the engine block (23), which is surrounded by various parts including the intake manifold (1), carburetor (2), and various filters (3, 4, 5, 6). The diagram also shows the cooling system components, including the water pump (22), radiator (21), and hoses (24, 25). The electrical system is represented by the alternator (17) and its mounting bracket (18). The exhaust system is shown with the catalytic converter (12) and muffler (11). The diagram includes 30 numbered callouts for identification.

<u>Item</u>	<u>Part No.</u>	<u>Description</u>
15.	540030	Oil filter
16.	510228	Key
17.	540004	Clutch assembly
18.	511072	1/4" Machine bushing
20.	540040	7/16" X 1 1/2" NF Bolt
21.	510336	5/16" X 3/4" Socket head
22.	510404	Exhaust system
23.	540045	Engine
24.	520129	Oil drain hose
25.	500004	Cap
26.	540049	Fuel line
27.	510498	Chamfered Spacer
28.	500192	Hose barb
29.	500188	Sediment bowl
30.	540073	Heat shield

# ELECTRICAL SCHEMATIC

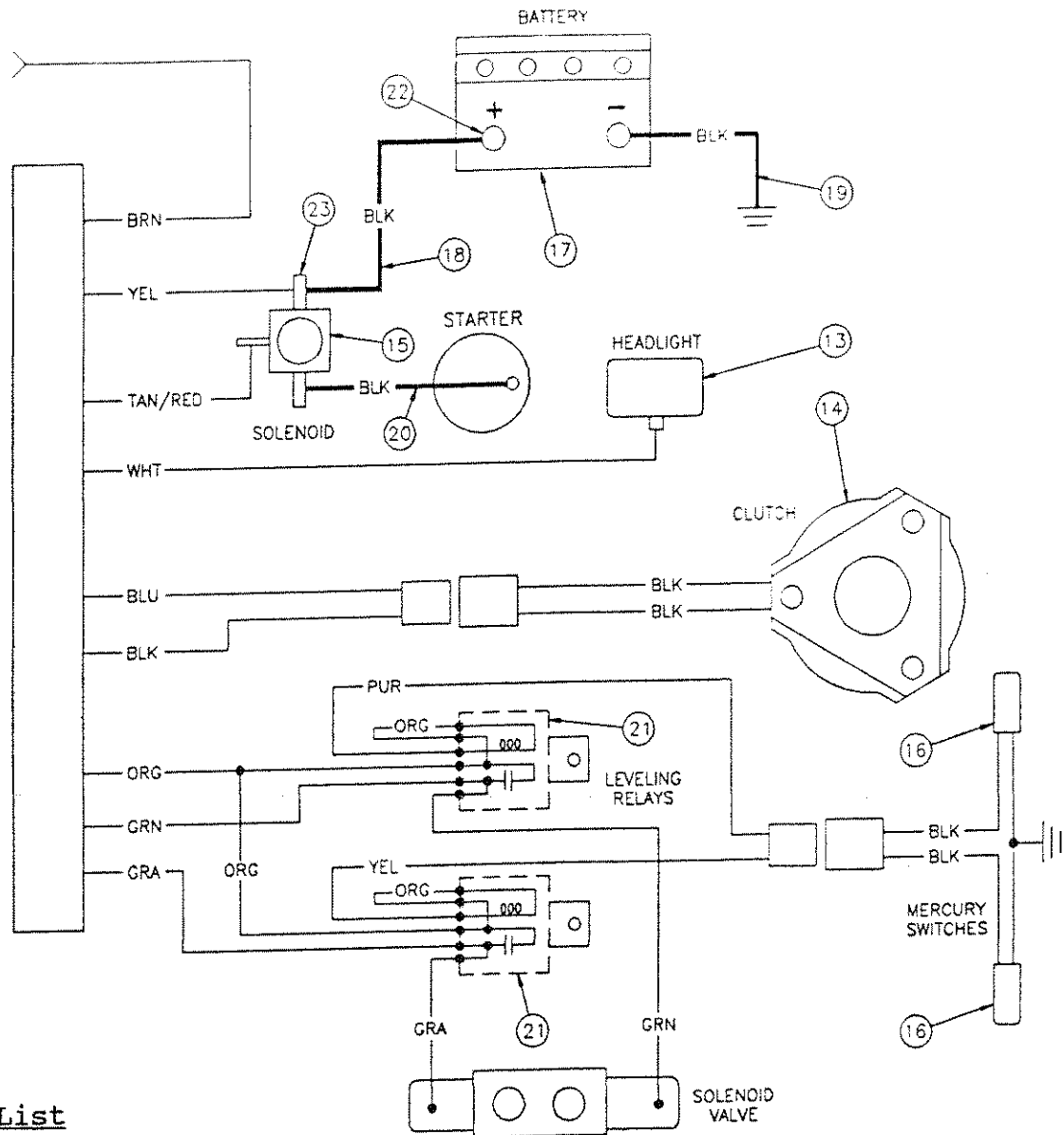
## 1. Console Harness



### PARTS LIST

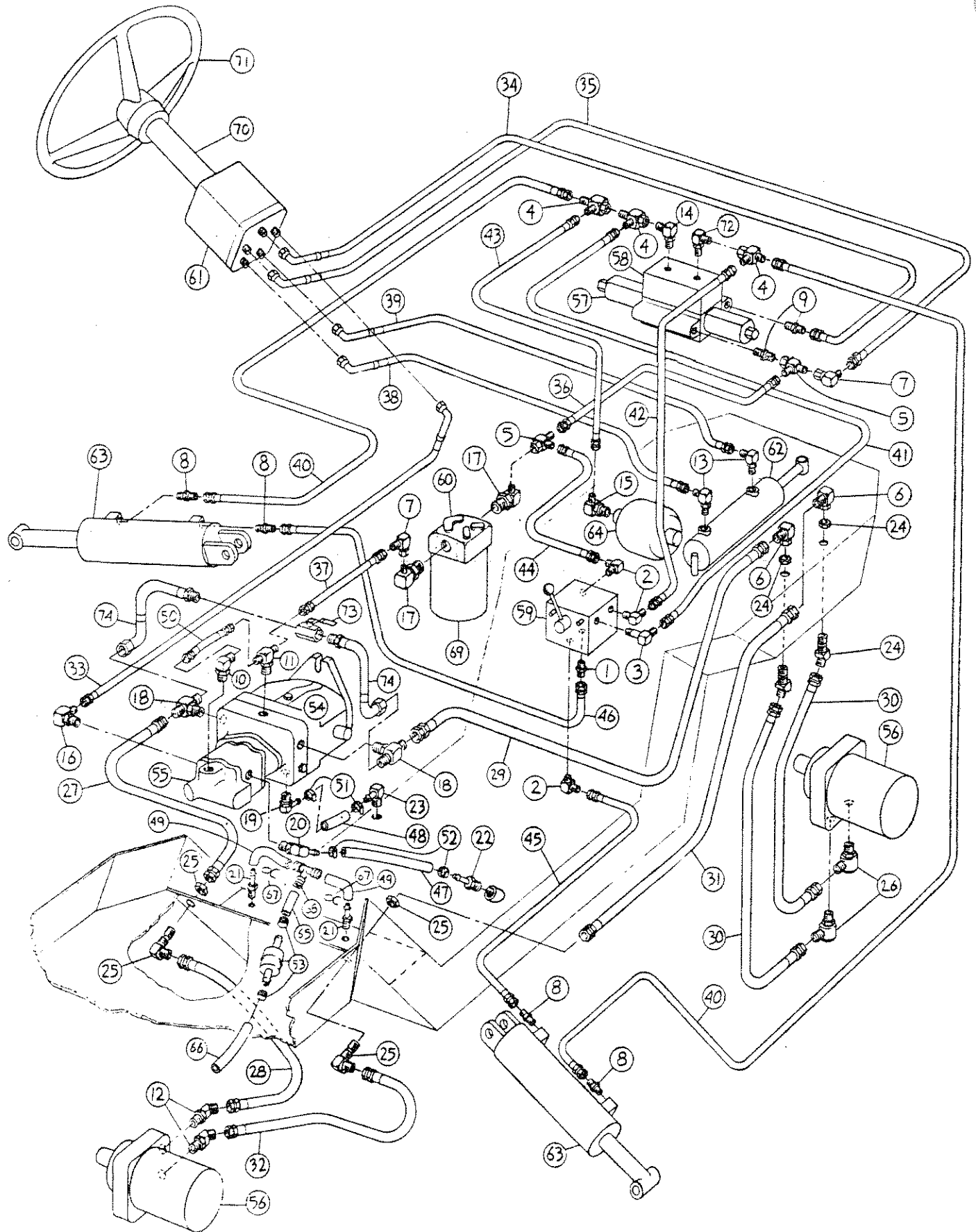
Item	Part No.	Description
1.	530011	Ammeter
2.	530009	Hour meter
3.	530016	Ignition switch
4.	530029	Rectifier
5.	530030	Oil pressure sensor
6.	530007	Switch, SPST
7.	530038	Seat safety switch
8.	530026	Neutral start switch
9.	530034	Console wiring harness
10.	530025	Flasher
11.	530020	Flasher harness
12.	530020	Switch, manual override
12.	530032	Hazard light

ELECTRICAL SCHEMATIC  
2. Mower Harness



Parts List

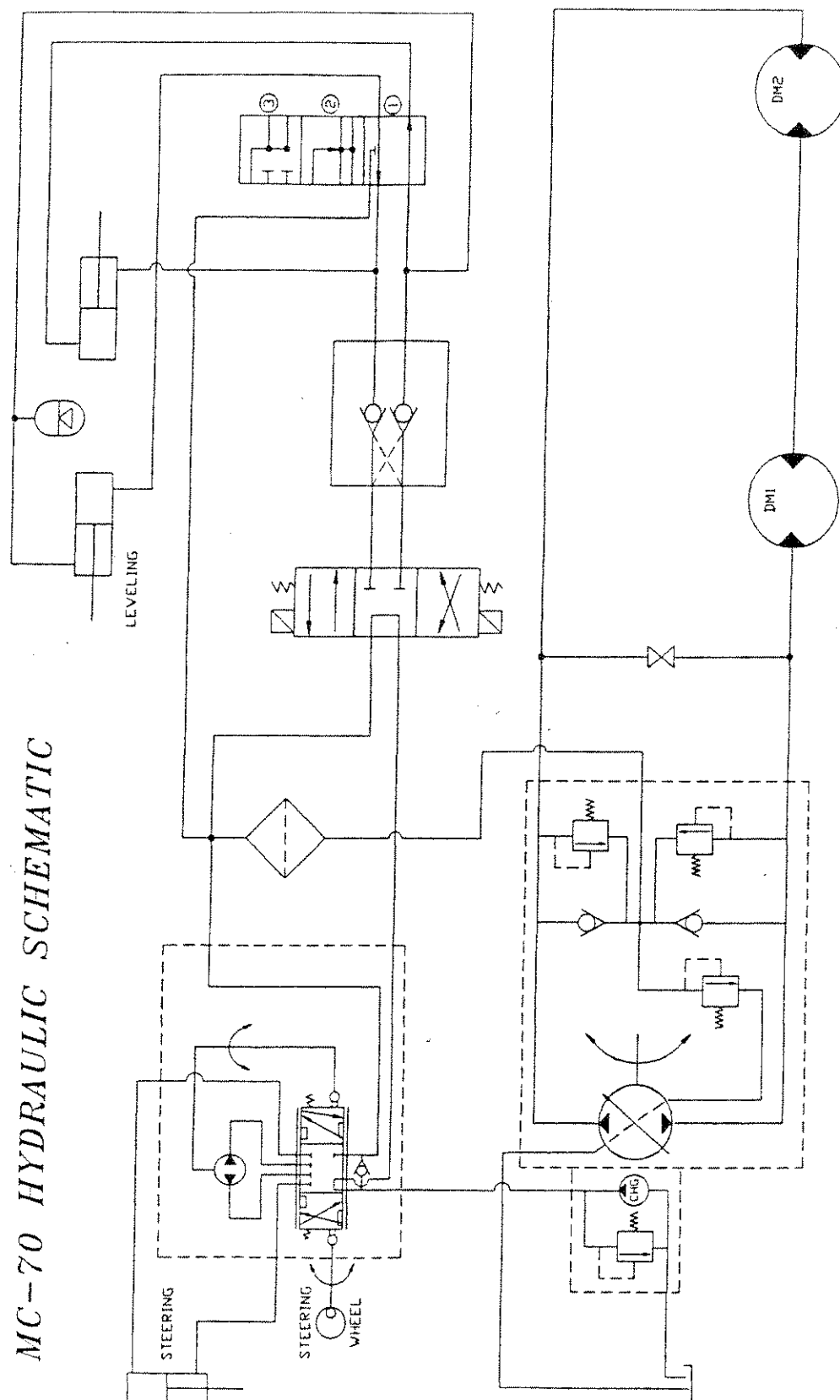
<u>Item</u>	<u>Part No.</u>	<u>Description</u>
13.	530010	Headlight
14.	540004	Blade clutch
15.	530018	Solenoid
16.	530076	Mercury switch assembly
17.	530017	Battery
18.	530002	Solenoid cable
19.	530001	Battery ground cable
20.	530003	Starter cable
21.	530028	Relay
22.	530035	Insulator, battery term.
23.	530036	Insulator, solenoid term.
24.	530027	Mower wiring harness



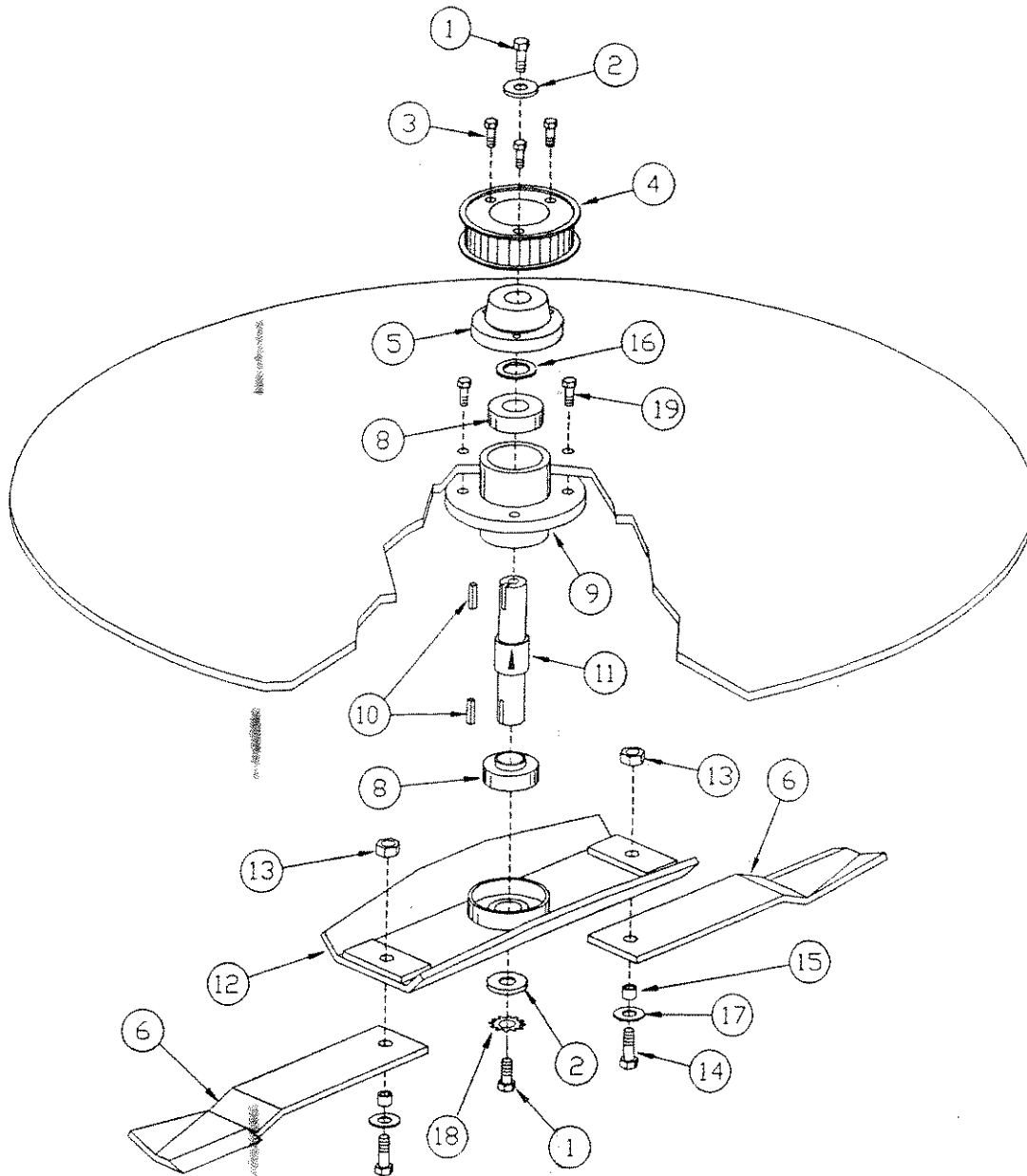
PARTS LIST  
HYDRAULIC SYSTEM

<u>ITEM</u>	<u>PART NO.</u>	<u>DESCRIPTION</u>	<u>ITEM</u>	<u>PART NO.</u>	<u>DESCRIPTION</u>
1.	520012	Male connector	51.	520098	1/2" Hose clamp
2.	520014	90 male elbow	52.	520099	3/4" Hose clamp
3.	520015	90 ex long elbow	53.	500017	Fuel filter
4.	520017	Swivel run tee	54.	520004	Propul. pump
5.	520018	Swivel run tee	55.	520003	Gear pump
6.	520019	90 elbow female	56.	520005	Wheel motor
7.	520020	90 swivel elbow	57.	520009	Sol. valve
8.	520116	Strt thread conn.	58.	520008	"A" attachment
9.	520093	Strt thread conn.	59.	520107	Override valve
10.	520130	90 strt.thrd.elbow	60.	520360	Filter head
11.	520117	Strt thread tee	61.	520163	Steering pump
12.	520094	45 elbow adapt.		520144	Seal kit
13.	520118	90 strt thread elbow	62.	520001	Steering cyl.
14.	520024	90 strt thread elbow		520139	Seal kit
15.	520025	90 strt thread elbow	63.	520011	Level cylinder
16.	520027	90 elbow adaptor	64.	520092	Accumulator
17.	520119	90 elbow adaptor	65.	500110	1/4" fuel line
18.	520366	Tee adaptor	66.	500111	1/4" fuel line
19.	520030	90 st thd adaptor	67.	540032	Hose clamp
20.	520031	90 st thd adaptor	68.	520154	Tee
21.	520353	Hose insert/male pipe	69.	520361	Filter
22.	520033	Male pipe adaptor	70.	520162	Steering column
23.	520121	90 mal pip adaptor	71.	550004	Steering wheel
24.	520034	45 bulkhead el	72.	520363	Adaptor, restrictor
25.	520035	90 bulkhead el	73.	520342	Ball Valve
26.	520095	90 swivel adaptor	74.	520368	Hose assembly
27.	520052	1/2" X 16.5" hyd. hose			
28.	520053	1/2" X 21" hyd. hose			
29.	520054	1/2" X 35" hyd. hose			
30.	520055	1/2" X 27"hyd. hose			
31.	520057	1/2" X 52" hyd. hose			
32.	520058	1/2" X 28" hyd. hose			
33.	520071	3/8" X 37" hyd. hose			
34.	520069	3/8" X 24" hyd. hose			
35.	520073	3/8" X 39" hyd. hose			
36.	520065	3/8" X 21" hyd. hose			
37.	520066	3/8" X 22" hyd. hose			
38.	520083	1/4" X 59" hyd. hose			
39.	520082	1/4" X 29" hyd. hose			
40.	520085	1/4" X 59" hyd. hose			
41.	520086	1/4" X 12" hyd. hose			
42.	520087	1/4" X 13" hyd. hose			
43.	520088	1/4" X 18" hyd. hose			
44.	520089	1/4" X 15" hyd. hose			
45.	520090	1/4" X 40" hyd. hose			
46.	520091	1/4" X 57" hyd. hose			
47.	520109	3/4" X 8.5" suct. hose			
48.	520111	1/2" X 9.5" drain hose			
49.	500063	1/4" fuel line			
50.	520124	1/4" hyd. hose			

# MC-70 HYDRAULIC SCHEMATIC



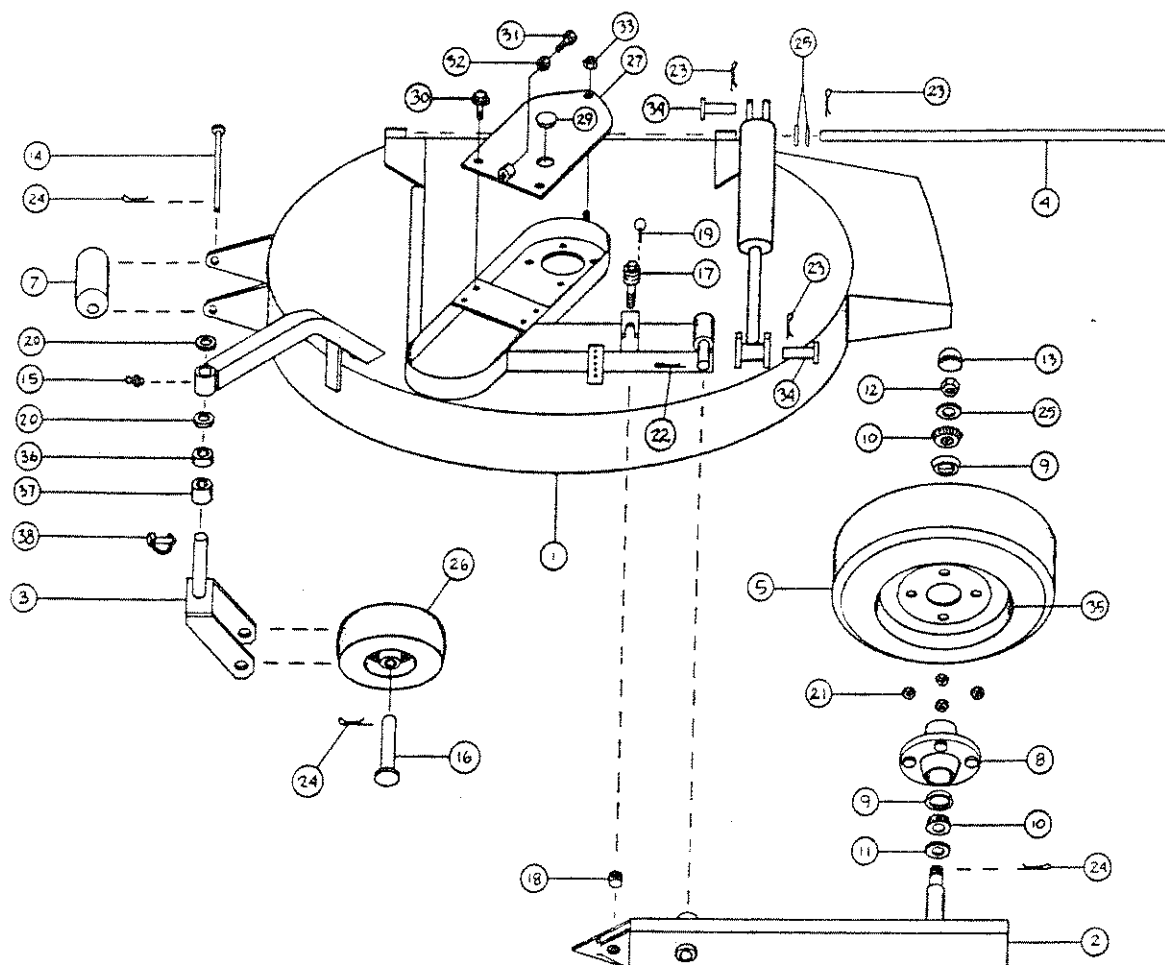
MOWER SPINDLE &  
BLADE ASSEMBLY



PARTS LIST

<u>Item</u>	<u>Part No.</u>	<u>Description</u>	<u>Item</u>	<u>Part No.</u>	<u>Description</u>
1.	510500	1/2" X 1" NF bolt	11.	510448	Blade spindle
2.	510128	1/2" Machine Bushing	12.	511128..	Blade saddle
3.	510242	Cap screw (w/item 4)	13.	510396	1/2" Lock nut
4.	510240	Sprocket	14.	500212	1/2" X 1 1/2" NC Bolt, gr. 8
5.	510241	Bushing	15.	511136	Bushing
6.	511135	Blade -right side	16.	510055	Spacer
	511134	Blade -left side	17.	500239	7/16" X .179 Flat washer
8.	510259	Bearing	18.	510957	1/2" Star washer
9.	510413	Bearing saddle	19.	510453	3/8" X 1" NC Wiz Bolt
10.	510228	1/4" X 1/4" X 1" key			

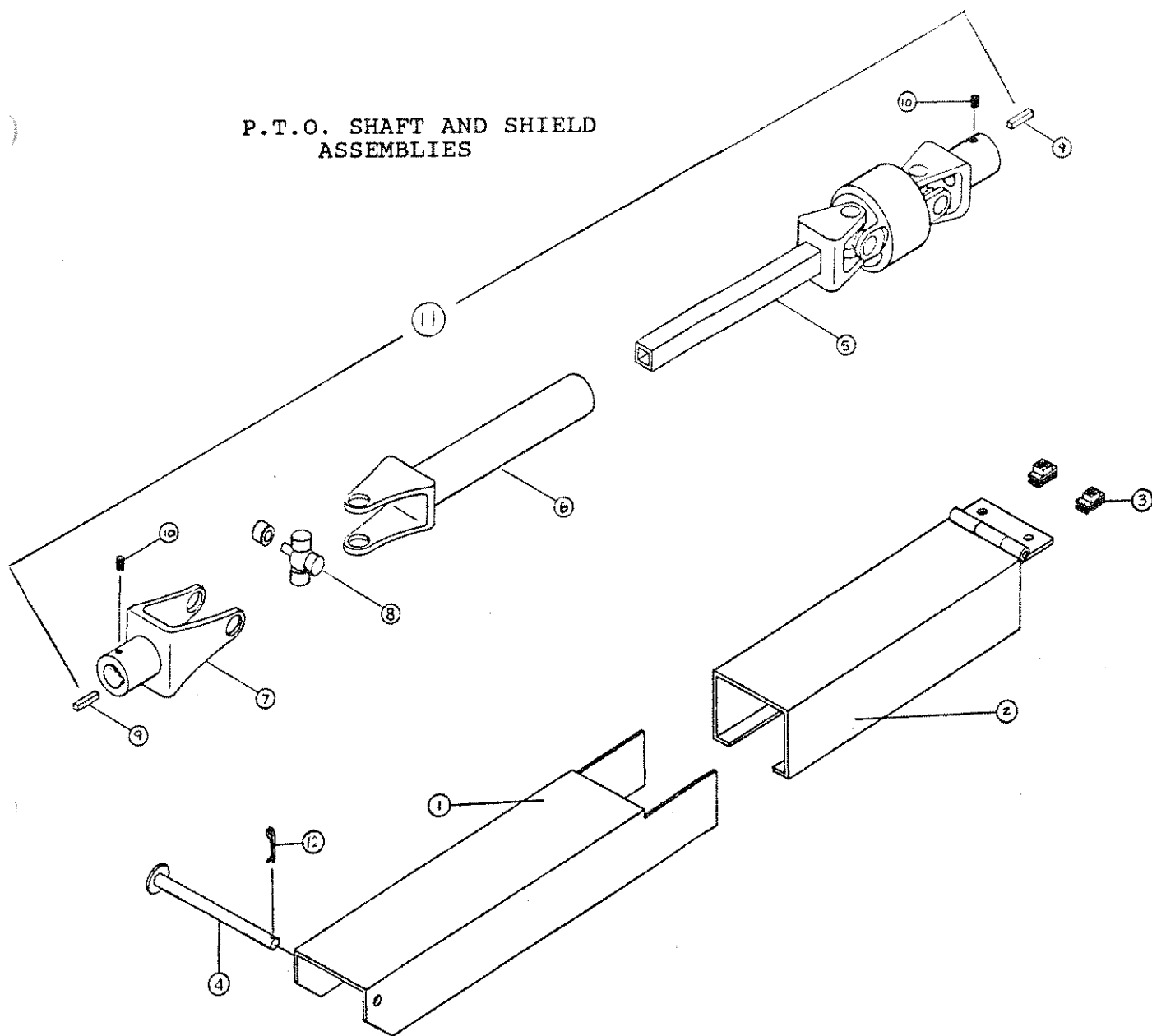
# MOWER DECK ASSEMBLY



## PARTS LIST

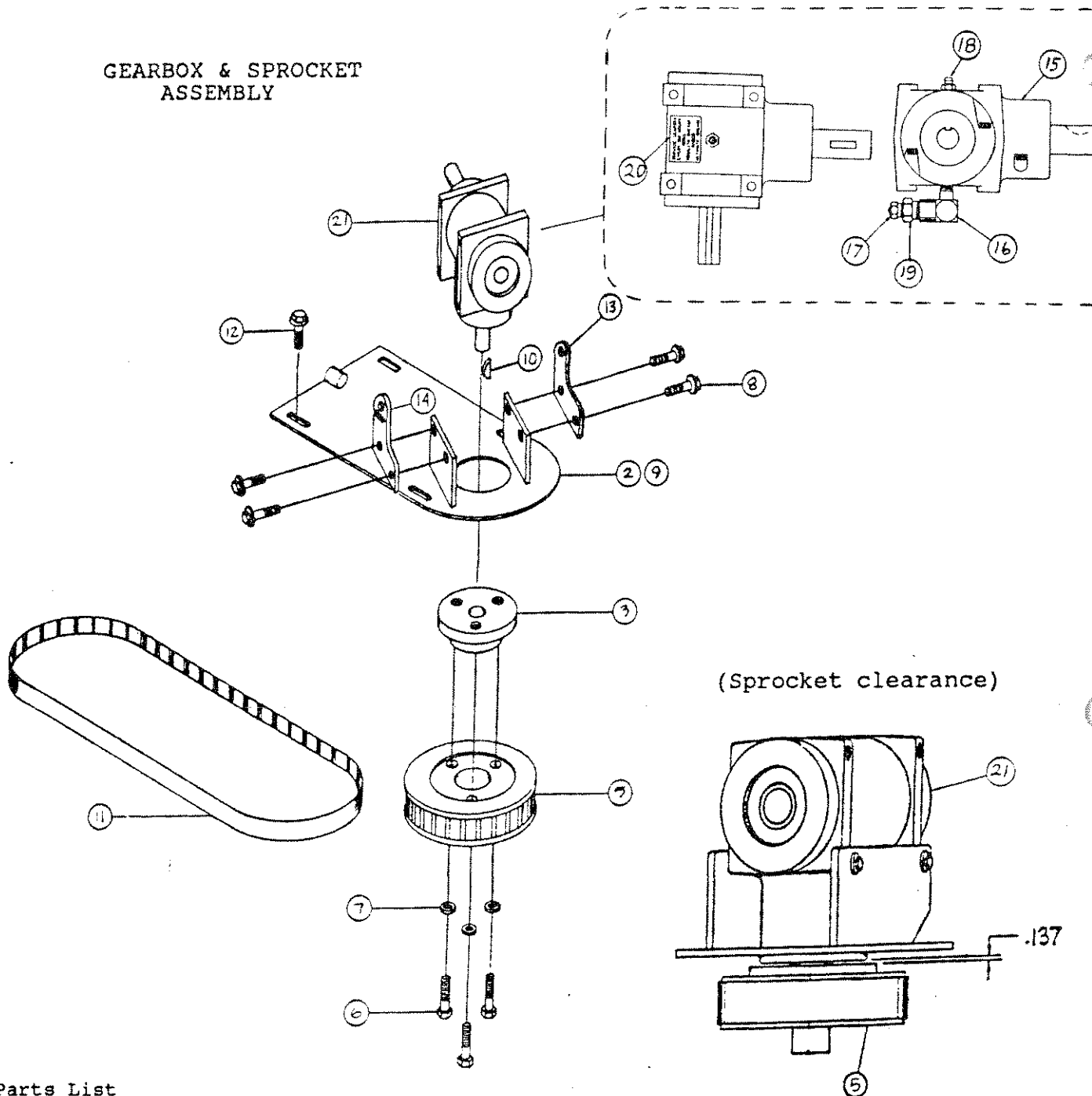
ITEM	PART NO.	DESCRIPTION	ITEM	PART NO.	DESCRIPTION
1.	510304	Mower deck-left	19.	510400	Cotterless hitch pin
	510303	Mower deck-right	20.	510824	1/4" Shim
2.	510075	Stabilizer arm-left	21.	510464	Lug nut
	510074	Stabilizer arm-right	22.	510175	Cotter pin
3.	510167	Caster arm wheel mnt	23.	510462	Cotter pin
4.	510051	Center pivot rod	24.	510463	Cotter pin
5.	510345	Wheel & Tire ass'y	25.	510461	Flat washer
	510233	Wheel, stabilizer	26.	510347	Wheel & tire ass'y
	510344	Tire, stabilizer		510237	Wheel, caster
7.	510047	Roller		510346	Tire, caster
8.	510235	Hub	27.	510187	Cover plate, left
9.	510465	Race		510188	Cover plate, right
10.	510466	Bearing	29.	510186	Plug
11.	510467	Seal	30.	510196	Wziflange bolt
12.	510468	Castle nut	31.	510197	Adj. bolt
13.	510469	Dust cap	32.	510208	Nut
14.	510281	Roller pin	33.	510096	Nut
15.	510174	Zerk	34.	510394	Pin
16.	510263	Wheel pin	36.	510823	1/2" Shim
17.	510093	Adjustment screw asy	37.	510822	1" Shim
18.	510005	Pin/arm adjustment	38.	510962	Lock pin

P.T.O. SHAFT AND SHIELD  
ASSEMBLIES



ITEM	PART NO.	DESCRIPTION
1.	510446	PTO shield (inner)
2.	510443	PTO shield (outer)
3.	510425	"U" type retainer
4.	510996	Pin
5.	540041	U-joint/shaft assembly
6.	540042	Shaft/yoke assembly
7.	540043	Yoke/end
8.	540044	U-joint/cross
9.	510282	Key
10.	510161	Set screw
11.	540047	PTO shaft assembly
12.	510176	Cotter pin

# GEARBOX & SPROCKET ASSEMBLY



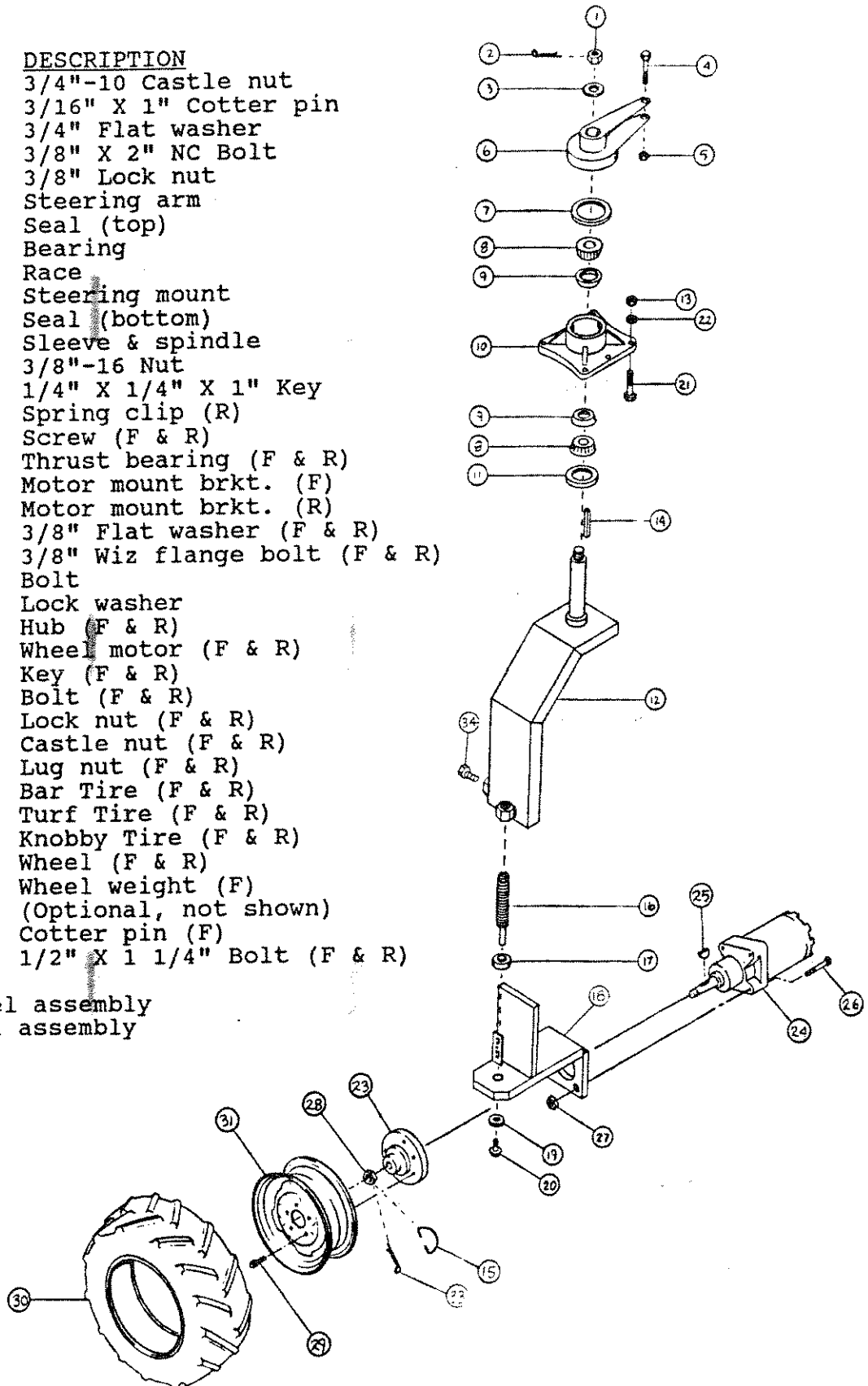
## Parts List

Item	Part No.	Description		
2.	510189	Cover plate - Right side	13.	510989 Bracket, PTO shield
3.	510241	Bushing	14.	510997 Bracket, with tab, PTO shield
5.	510240	Sprocket	15.	540203 *Gearbox
6.	510242	Bolt (included w/ 510241)	16.	510321 *Street ell
7.	510221	Washer (included w/ 510241)	17.	540148 *Vent
8.	510992	5/16" X 1" NC Wizbolt	18.	540149 *Zerk
9.	510190	Cover plate - Left side	19.	540150 *Pipe bushing
10.	510282	Woodruff Key	20.	500206 *Decal
11.	510261	Timing belt	21.	540212 Gearbox assembly
12.	510196	5/16" X 1/2" Wizflange Bolt		*(includes items 15-20)

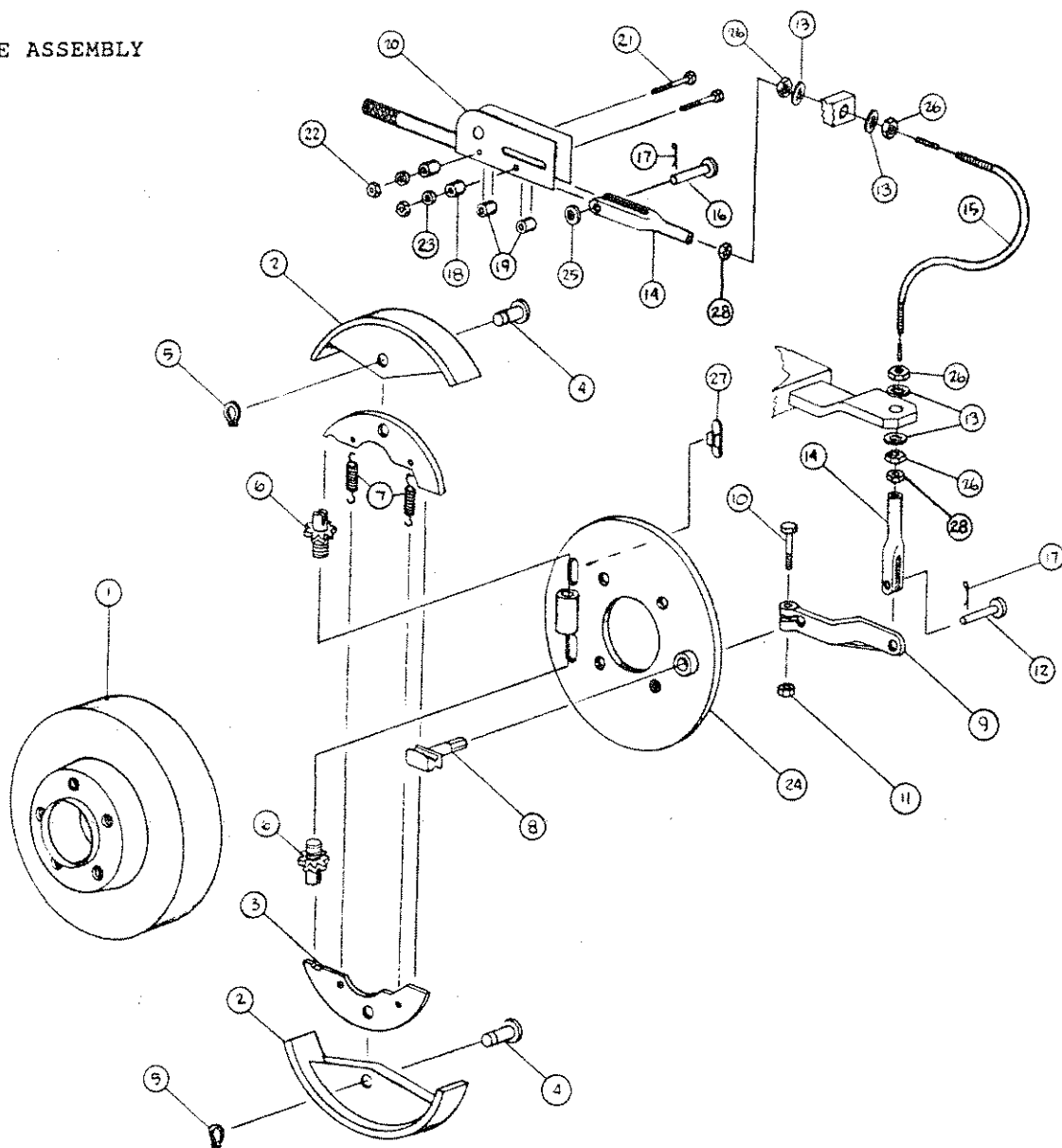
# STEERING HEAD ASSEMBLY FRONT AND REAR DRIVE WHEEL ASSEMBLY

ITEM	PART NO.	DESCRIPTION
1.	510111	3/4"-10 Castle nut
2.	510112	3/16" X 1" Cotter pin
3.	510370	3/4" Flat washer
4.	410267	3/8" X 2" NC Bolt
5.	510471	3/8" Lock nut
6.	510152	Steering arm
7.	510108	Seal (top)
8.	510106	Bearing
9.	510209	Race
10.	510210	Steering mount
11.	510107	Seal (bottom)
12.	510246	Sleeve & spindle
13.	510272	3/8"-16 Nut
14.	510228	1/4" X 1/4" X 1" Key
15.	510988	Spring clip (R)
16.	510983	Screw (F & R)
17.	510397	Thrust bearing (F & R)
18.	510245	Motor mount brkt. (F)
	510489	Motor mount brkt. (R)
19.	510365	3/8" Flat washer (F & R)
20.	510401	3/8" Wiz flange bolt (F & R)
21.	510113	Bolt
22.	510271	Lock washer
23.	510238	Hub (F & R)
24.	520005	Wheel motor (F & R)
25.	520135	Key (F & R)
26.	510213	Bolt (F & R)
27.	510396	Lock nut (F & R)
28.	510994	Castle nut (F & R)
29.	510239	Lug nut (F & R)
30.	510406	Bar Tire (F & R)
	510342	Turf Tire (F & R)
	511042	Knobby Tire (F & R)
31.	510234	Wheel (F & R)
32.	510697	Wheel weight (F) (Optional, not shown)
33.	510993	Cotter pin (F)
34.	510473	1/2" X 1 1/4" Bolt (F & R)

F = Front wheel assembly  
R = Rear wheel assembly



# BRAKE ASSEMBLY

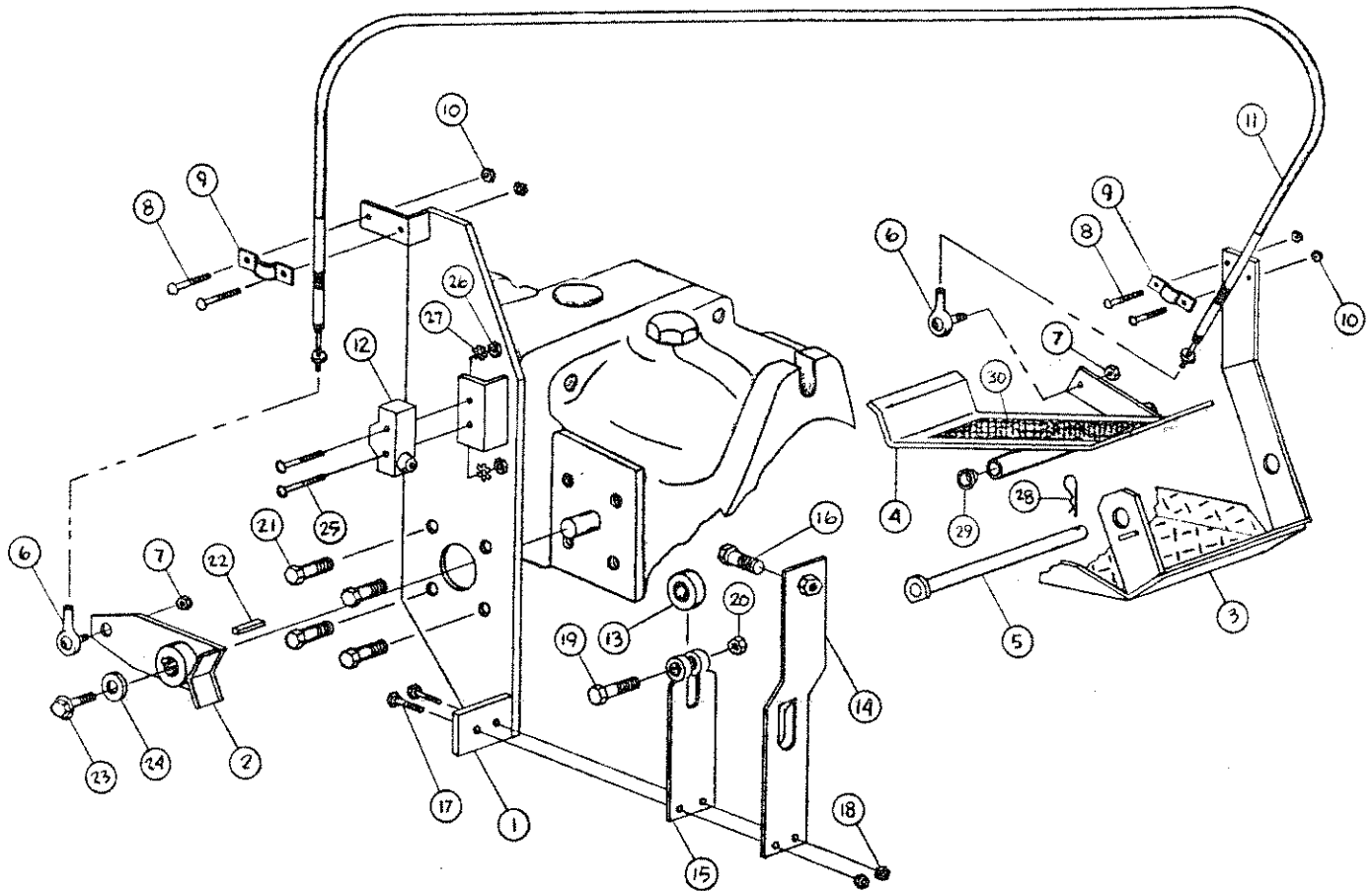


## PARTS LIST

Item	Part No.	Description
1.	550043	Brake drum
2.	550029	Brake shoe
3.	550028	Shoe lever
4.	550032	Anchor pin
5.	550033	Retaining ring
6.	550034	Adjusting screw
7.	550031	Spring
8.	550035	Cam
9.	550024	Brake arm
10.	550045	Bolt
11.	510224	Nut
12.	550048	Clevis pin
13.	540095	Star lock washer
14.	550046	Yoke
15.	550027	Brake cable

Item	Part No.	Description
16.	550049	Pin
17.	550050	Cotter pin
18.	550018	Mount bushing
19.	550019	Spacer
20.	550042	Handle
21.	510366	3/8" X 2 1/2" NC Bolt
22.	510272	3/8" Nut
23.	510271	3/8" Lock washer
24.	550040	Back plate ass'y
25.	510195	Flat washer
26.	540094	Jam nut
27.	550038	Plug
28.	510502	Nut

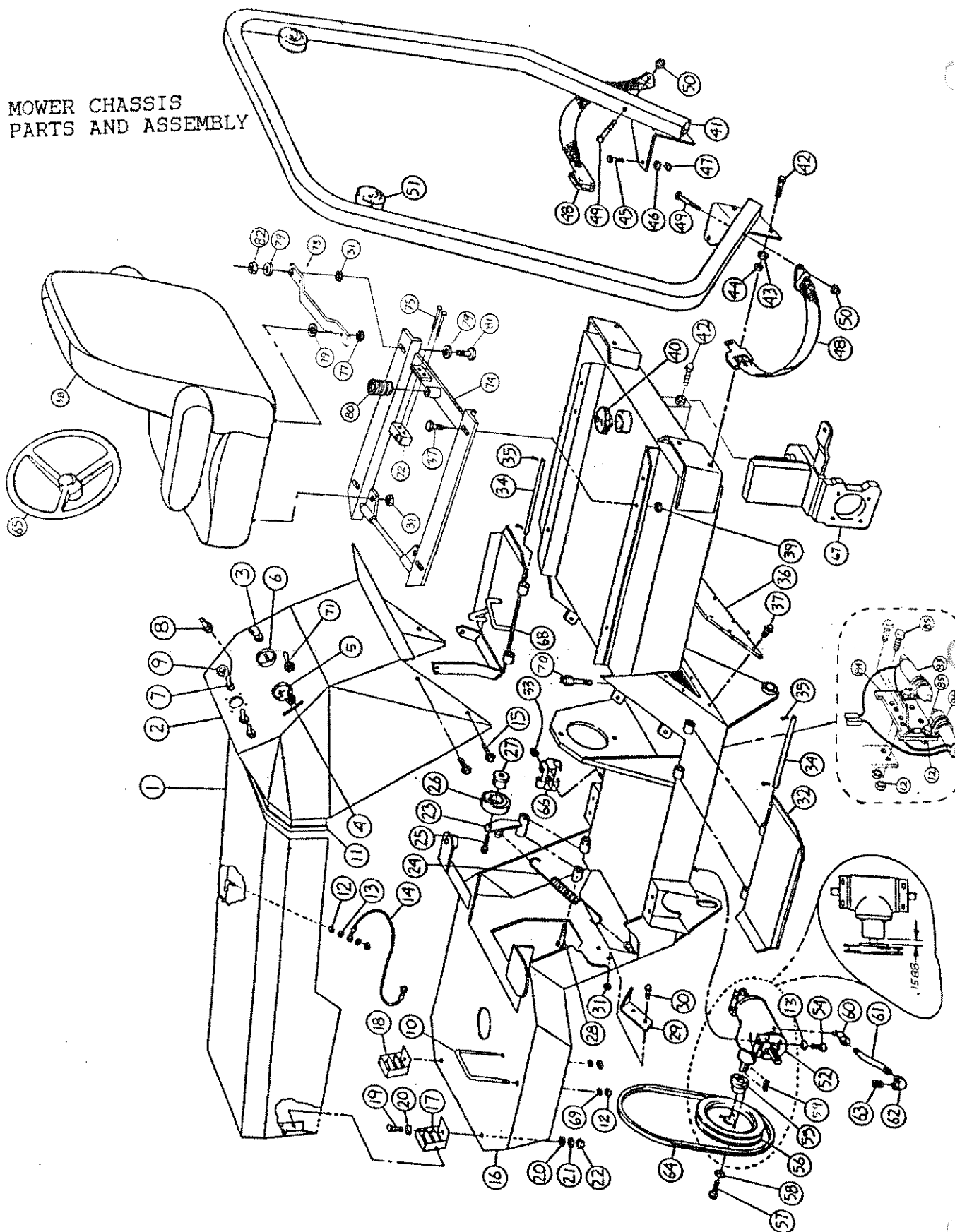
# FOOT CONTROL ASSEMBLY



## PARTS LIST

Item	Part No.	Description	Item	Part No.	Description
1.	540056	Traction plate	16.	540083	5/16"-24 X 1" Adjusting bolt
2.	540052	Traction bracket	17.	540084	1/4" X 3/4" Wizflange bolt
3.	540071	Pedal bracket	18.	540076	1/4" Lock nut
4.	540058	Pedal	19.	510065	5/16-18 X 1 1/4" Bolt
5.	540074	Pedal shaft	20.	410222	5/16" Lock nut
6.	540075	Rod end bearing	21.	540086	8mm X 20mm Bolt
7.	540085	Lock nut	22.	540087	3/16" X 3/16" X 1/2" Key
8.	510094	10-24 X 1" Bolt	23.	540088	3/8"-24 X 3/4" Wizflange bolt
9.	540077	Cable clamp	24.	510365	3/81" Flat washer
10.	540078	10-24 Lock nut	25.	540089	6-32 X 1" Bolt
11.	540072	Cable	26.	540090	6-32 Nut
12.	530038	Neutral switch	27.	540091	#6 Star lock washer
13.	540079	Bearing	28.	510593	Hairpin clip
14.	540081	Leaf spring	29.	540059	Bushing
15.	540080	Bearing bracket	30.	540082	Traction paper

# MOWER CHASSIS PARTS AND ASSEMBLY



# MOWER CHASSIS

ITEM	PART NO.	DESCRIPTION	ITEM	PART NO.	DESCRIPTION
1.	510081	Hood	44.	510225	1/2"-13 nut
2.	510082	Cowling	45.	510063	3/8"-16 X 1" bolt
3.	550015	Choke	46.	510271	3/8" lock washer
4.	550016	Throttle	47.	510272	3/8"-16 nut
5.	530011	Ammeter	48.	500064	Seat belt
6.	530009	Hour meter	49.	510474	7/16"-20 X 2 3/4" bolt
7.	530007	Toggle switch	50.	510475	7/16"-20 lock nut
8.	530019	Switch boot	51.	530032	Hazard light
9.	530016	Ignition switch	52.	540204	Splittter gear box
10.	500030	Battery strap	54.	510336	5/16"-18 skt head
11.	510062	Edge molding / cowling	55.	510269	Bushing
12.	510224	1/4"-20 nut	56.	510331	Pulley
13.	510322	1/4" flat washer	57.	510242	1/4" X 1 3/8" Bolt
14.	500029	Hood cable	58.	510221	1/4" lock washer
15.	510401	3/8-16" X 3/4" Flange bolt	59.	510282	Key
16.	510064	Frame	60.	510321	Adaptor, 90 degree
17.	510362	Grill-left	61.	510332	1/4" pipe
18.	510363	Grill-right	62.	510323	1/4" 90 degree ell
19.	510066	5/16"-18 X 3/4" bolt	63.	510477	1/4" plug
20.	510195	5/16" flat washer	64.	540001	Belt
21.	510335	5/16" lock washer	65.	550004	Steering wheel
22.	510208	5/16"-18 nut	66.	510496	Hose clamp
23.	540011	Belt tightener bracket	67.	510488	Motor brkt assembly
24.	540025	Spring	68.	540071	Pedal brkt assembly
25.	510063	3/8-16" X 1" bolt	69.	510221	Lock washer
26.	540015	Bearing insert	70.	520138	Dipstick
27.	540013	Bearing	71.	530020	Override switch
28.	510472	5/16"-18 X 4" bolt	72.	530038	Switch
29.	510444	Clutch stop	73.	510587	Switch activater
30.	510090	5/16"-18 X 1" bolt	74.	510594	Seat mount bracket
31.	510096	5/16"-18 flange nut	75.	540089	6-32 X 1" bolt
32.	510181	Footrest	77.	510096	5/16" Wiznut
33.	510497	Nut	78.	540090	6-32 nut
34.	510034	Hinge pin	79.	510195	5/16" Flat washer
35.	510249	Cotter pin	80.	510509	Spring
36.	510315	Inspection plate	81.	510065	5/16" X 1 1/4" NC bolt
37.	510476	5/16"-18 X 3/4" flange bolt	82.	410222	5/16" Lock nut
38.	510061	Seat	83.	530073	Mercury switch (pair)
39.	510208	5/16"-18 nut	84.	511048	Bracket, switch
40.	500025	Gas cap	85.	540084	1/4" x 3/4" Wiz bolt
41.	510395	R.O.P.S. roll bar	86.	710577	Adel clamp
42.	510473	1/2"-13 X 1 1/4" bolt			
43.	510219	1/2" lock washer			

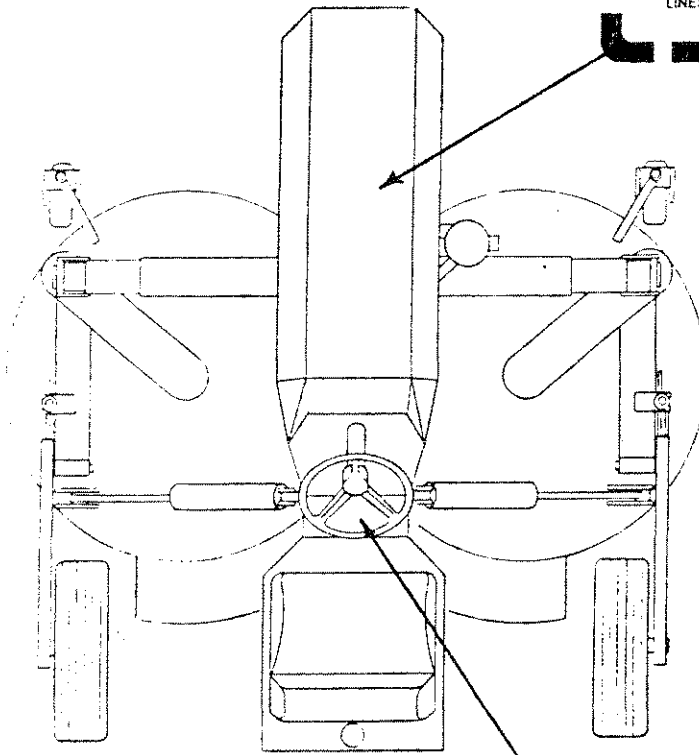
## DECAL LOCATIONS

**⚠ WARNING**

**HYDRAULIC FLUID ESCAPING UNDER PRESSURE  
CAN PENETRATE SKIN**

■ HYDRAULIC FLUID MAY ALSO CAUSE INFECTION IN A MINOR CUT OR OPENING IN THE SKIN; IF EXPOSED TO HYDRAULIC FLUID, SEE A DOCTOR AT ONCE.	■ RELIEVE ALL PRESSURE IN THE SYSTEM BEFORE DISCONNECTING OR WORKING ON HYDRAULIC LINES.
■ BEFORE APPLYING PRESSURE TO HYDRAULIC SYSTEM, MAKE SURE ALL CONNECTIONS ARE TIGHT AND ALL HOSES AND LINES ARE IN GOOD CONDITION.	■ TO FIND A LEAK UNDER PRESSURE, USE A PIECE OF CARDBOARD OR WOOD-NEVER USE YOUR HANDS.
	■ TO RELIEVE ALL PRESSURE IN SYSTEM, TURN ENGINE OFF, AND LOWER ATTACHMENT.

(Under hood)



**⚠ WARNING**

**READ OWNERS MANUAL BEFORE  
ATTEMPTING TO OPERATE THIS MACHINE**

- Never allow persons to operate this machine without proper instruction or allow children to operate the machine
- Never carry passengers
- Never direct discharge of material from the mower deck toward bystanders
- If leveling system malfunctions, immediately turn down hill to level ground and stop machine
- Never drive on a hill (horizontally) that is steeper than 30°
- Before making repairs, maintenance, or adjustment, turn blades clutch to OFF. Turn the engine OFF. Remove the ignition key
- Before dismounting, turn off blades. Put shift lever into neutral and set parking brake. Stop engine and remove ignition key

50 044 4

DECAL LOCATIONS



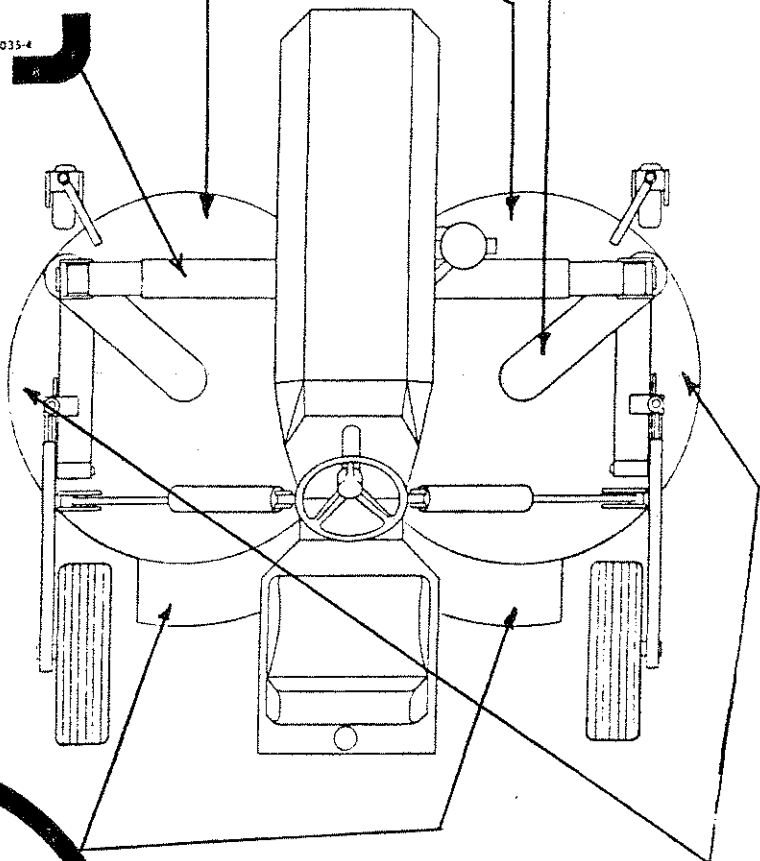
(Both sides)



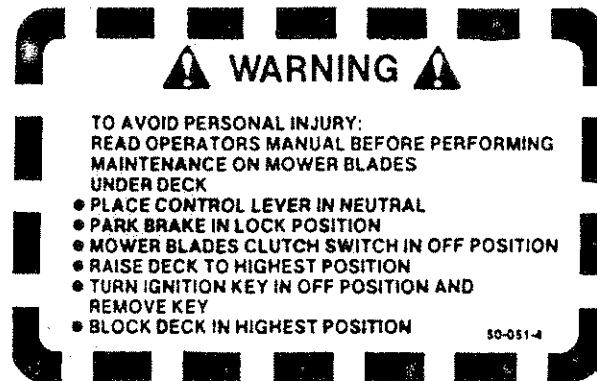
(Both sides)



(Both sides)



## DECAL LOCATIONS



(Under hood)

