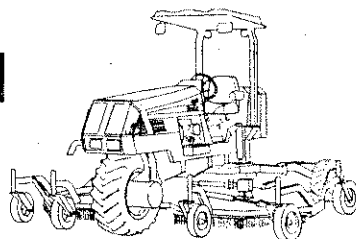


**MC144**



0  
1  
2  
3  
4  
5  
6  
7  
8  
9  
A  
B  
C  
D  
E  
F  
G  
H  
I  
J  
K  
L  
M  
N  
O  
P  
Q  
R  
S  
T  
U  
V  
W  
X  
Y  
Z

## CONTENTS

Safety .....	1
Specifications .....	2
Operating Controls .....	3-4
Service and Maintenance	
Engine Service .....	5
Filters .....	6
Lubrication .....	7-8
Cutting Height Adjustment .....	9
Leveling Adjustment .....	10
Shear Bolts .....	11
Belt .....	11
Brake .....	12
Hydraulic System .....	13
Tires .....	13
Towing .....	14
Electrical Schematic .....	15-16
Hydraulic Schematic .....	17
Parts, Hydraulics	
Positrac Valve .....	18
Control Block .....	18
Propulsion Pump & Wheel Motors .....	19-20
Charge Pump & Cylinders .....	21-22
Deck Drive Motor .....	23
Heat Exchanger .....	24
Parts, Assembly	
Rear Tractor Assembly .....	25
Air Intake .....	26
Cooling and Battery Assembly .....	27
Exhaust Assembly .....	28
Steering Assembly .....	29
PTO Assembly .....	30
Deck Assembly .....	31-32
Rear Blade Guards .....	33
Blade Assembly .....	33
Height Adjusters .....	34
Leveling Switch .....	34
Stabilizer Arms .....	35
Deck Drive .....	36
Wheel Mounts .....	37
Caster Wheels .....	38
Roll Bar Assembly .....	39
Trouble Shooting .....	40
Safety Decals .....	41-42
Index .....	43-44
Warranty .....	45

---

## REGISTRATION

Date of Purchase\_\_\_/\_\_\_/\_\_\_

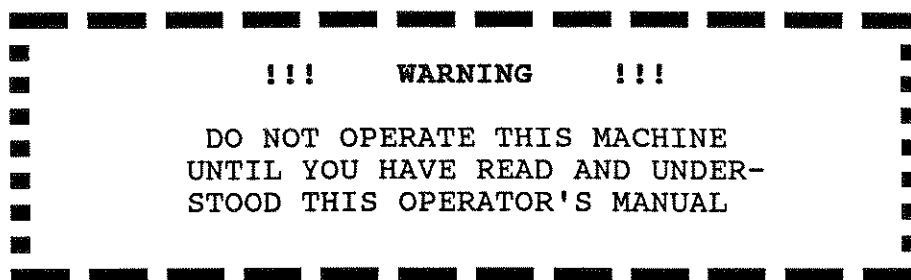
Dealers Name\_\_\_\_\_Phone No.\_\_\_\_\_

Serial Number-Machine\_\_\_\_\_

Serial Number-Engine\_\_\_\_\_

FOR DEWEZE MOWER - MODEL MC144, BEGINNING SERIAL NO. MC144011  
MC144/0491

## SAFETY SECTION



1. Never allow persons to operate this machine without proper instruction, or allow children to operate the machine.
2. Never carry passengers.
3. Never direct discharge of material from the mower deck toward bystanders.
4. If leveling system malfunctions, turn down hill, proceed slowly to level ground and stop machine.
5. Never drive on a hill that is steeper than 30 degrees.
6. Before making repairs, maintenance, or adjustment, turn blade clutch to OFF. Turn the engine OFF. Remove the ignition key.
7. Before dismounting, turn off blades. Put quadrastat hand control in neutral position and set parking brake. Stop engine and remove ignition key.
8. Relieve all pressure in the hydraulic system before disconnecting or working on hydraulic lines.
9. Keep all shields in place during machine operation.
10. Do not place hands or feet under deck.
11. Do not fill fuel tank while engine running, or hot.
12. Place block under deck for support before performing maintenance on mower blades with deck raised.
13. When driving or transporting with outer decks up, make certain the blades are completely under the decks.
14. Safety decals must be replaced on machine if missing or illegible.

### OPERATING TIPS

1. ALWAYS CHECK ENGINE OIL AND COOLANT BEFORE STARTING.
2. MAKE SURE YOU HAVE PLENTY OF FUEL.
3. VISUALLY CHECK TIRES.
4. READ SAFETY DECALS.
5. ADJUST SEAT TO COMFORTABLE POSITION.
6. CHECK HYDRAULIC OIL LEVEL BEFORE STARTING.
7. CARRY SHEAR BOLTS AND WRENCHES IN TOOL BOX.

## SPECIFICATIONS

ENGINE - Cummins, Model 4B, 76 hp diesel  
FUEL - #2 Diesel  
OIL - 15W-40, API Classification CE/SF

BATTERY - Group 24, 875 CCA

FILTERS -

### ENGINE

OIL: DewEze 500120, Fleetguard LF3345  
FUEL, PRIMARY: DewEze 500122, Fleetguard FF5038  
FUEL, SECONDARY: DewEze 500121, Fleetguard FF5052

### HYDRAULIC

SPIN-ON: DewEze 520351, Lenz CP1002-10  
CARTRIDGE: DewEze 520349, Shroeder N10

### AIR

FILTER ELEMENT: DewEze 500123, P181054

### HYDRAULIC SYSTEM -

WHEEL DRIVE: SUNDSTRAND M46 Piston motors  
DECK DRIVE: SUNDSTRAND M46 Fixed Displacement Motor  
TORQUE-HUB, 24 to 1 gear reduction  
CHARGE PUMP: SUNDSTRAND TKP 4/26 - 14.3  
STEERING: ROSS/TRW  
MOTOR OIL: 15W-40  
HOSES - 12,000 psi bursting pressure  
BELT, DECK DRIVE - Gates HI-POWER II POWERBAND 3/B56

### SAFETY SWITCHES -

OUTER DECK - When outer deck begins folding up, PREVENTS BLADES FROM RUNNING, AND TURNS AUTO LEVEL OFF.

SEAT - If operator is not sitting on seat, BLADES WILL NOT ENGAGE, WHEEL DRIVE MOTORS WILL NOT ENGAGE, and AUTO LEVEL IS OFF.

ELECTRICAL SYSTEM - With parking brake on, BLADES WILL NOT ENGAGE, WHEEL DRIVE MOTORS WILL NOT ENGAGE, and AUTO LEVEL IS OFF.

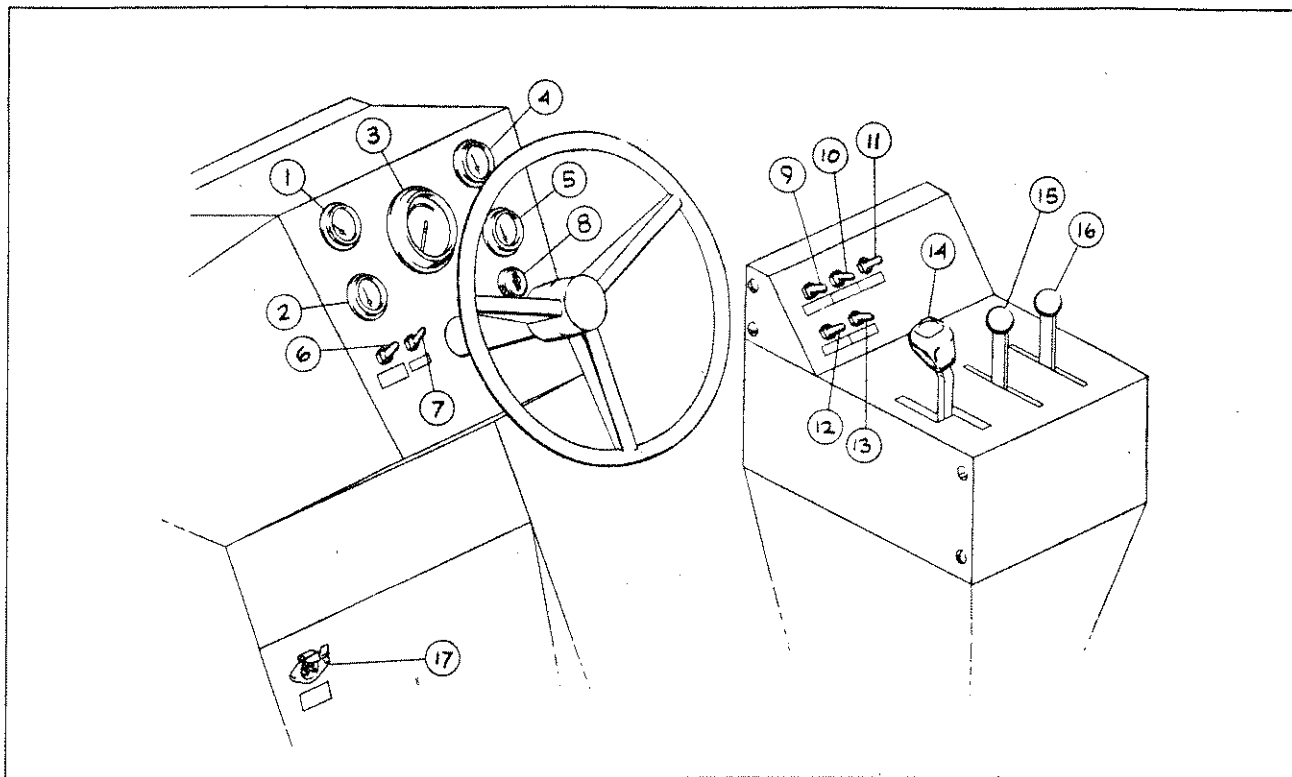
BRAKES are ON when ignition switch is OFF.

### TIRES -

DRIVE - GOODYEAR, 38 X 14.00-20 NHS, 4 ply. Filled with 90 oz. tire sealant.  
Inflated to 16 psi.  
STABILIZER - GOODYEAR, 27 X 8.50-15 NHS. Filled with 40 oz. tire sealant.  
Inflated to 30 psi.  
DECK CASTER - 400 X 8 Segmented tires.  
400 X 6 Segmented tires.

BRAKES - Spring applied, automatic ON with ignition OFF. Hydraulic released.

## OPERATING CONTROLS



1. FUEL GAUGE
2. WATER TEMPERATURE GAUGE
3. TACHOMETER
4. AMP GAUGE
5. ENGINE OIL PRESSURE GAUGE
6. PARKING BRAKE - Turns parking brake on and off.

**NOTE:** Parking Brake is automatically ON when ignition switch is OFF.

**NOTE:** Ground drive and Blade drive will NOT engage with parking brake ON.

7. LIGHTS - Turns on head lights and strobe light.
8. IGNITION SWITCH - For starting engine.
9. AUTO LEVEL - Turns on automatic leveling. The machine will not self level if this is turned off.

**WARNING!** AUTO LEVEL WILL NOT WORK WHILE STEERING IS HELD AGAINST STOP DURING EXTREME RIGHT OR LEFT TURN.

10. HI / LO - HI puts machine into high speed range for road speed. LO puts machine into low speed range for mowing.

**NOTE:** POSI-TRAC MUST BE OFF WHEN OPERATING IN HI RANGE!

11. DECK FOLD - Hold the switch in the UP position to fold up outer decks. The stabilizer wheels will pull in towards the machine at the same time. Hold the switch in the DOWN position to lower the outer decks and move the stabilizer wheels to the out position.

**WARNING!! DO NOT FOLD DECK UNLESS MOWER IS ON LEVEL GROUND!**

**NOTE:** The safety switch on each deck will prevent the blades from engaging as soon as the outer decks start folding up, and the Auto Level will turn OFF.

12. TILT - Overrides the automatic leveling. Hold switch to the left to tilt machine to the left. Hold switch to the right to tilt machine to the right.

**TO RAISE RIGHT DECK:**

- a. Turn Auto Level switch OFF. Hold tilt switch to the left until tractor is leaning completely to the left. Release switch.
- b. Close valve on left leveling cylinder by moving valve handle perpendicular to cylinder.
- c. Hold Tilt Switch to the right. The right deck will raise.
- d. Turn engine off. Block deck before working underneath the deck.

**TO LOWER RIGHT DECK:**

- a. SLOWLY open valve on left leveling cylinder. Right deck will lower to ground.
- b. Start engine. Turn Auto Level switch ON; Tractor will level.

**NOTE:** To raise and lower left deck, use same procedure as above, on opposite side.

13. POSI-TRAC - Turn ON for better traction on sloping ground or muddy conditions. Turn OFF for general mowing on level ground.

**NOTE:** POSI-TRAC must be OFF when operating in HI Range.

**NOTE:** Tires may mar the turf while making sharp turns with Posi-Trac ON.

14. TRANSMISSION - Push Quadro-Stat lever forward for forward travel; back for reverse travel. Move lever slowly to increase speed.

15. THROTTLE - Push forward for increased engine speed; back for idle.

**NOTE:** ALWAYS OPERATE MOWER AT FULL ENGINE SPEED.

16. BLADE - Push forward slowly to engage blades. Engine should be at less than 1/3 full throttle when engaging blades.

**NOTE:** Blades will not engage if parking brake is ON, if operator is not sitting on seat, or if deck wings are not down.

17. WINCH - Outlet for the remote switch for winch operation. Switch is stored in tool box. See the separate Ramsey Winch manual for operation and service.

# ENGINE MAINTENANCE SCHEDULE

DAILY, or REFUELING	3 MONTHS or 250 HRS.	6 MONTHS or 500 HRS.	12 MONTHS or 1000 HRS.	2 YEARS or 2000 HRS.
CHECK	CHANGE OR REPLACE			
Oil level Coolant level Fan Drive belt Fuel water trap Radiator cowlings Radiator core	Lube oil Lube filter	Lube oil Lube filter Fuel filter	Lube oil Lube filter Fuel filter	Lube oil Lube filter Fuel filter Antifreeze

3 MONTHS or 250 HRS.	6 MONTHS or 500 HRS.	12 MONTHS or 1000 HRS.	2 YEARS or 2000 HRS.
ADJUST			
		Valve lash clearance	Valve lash clearance

3 MONTHS or 250 HRS.	6 MONTHS or 500 HRS.	12 MONTHS or 1000 HRS.	2 YEARS or 2000 HRS.
CHECK/INSPECT			
Air cleaner Intake system	Air cleaner Intake system Antifreeze	Air cleaner Intake system Antifreeze Fan hub Belt tension Belt tensioner bearing	Air cleaner Intake system Antifreeze Fan hub Belt tension Belt tensioner bearing Damper

FUEL: #2 Diesel

OIL: 15W-40, API Classification CE/SF

ANTI-FREEZE: Heavy Duty, meeting chemical composition of GM-6038M



## FILTERS AND BATTERY

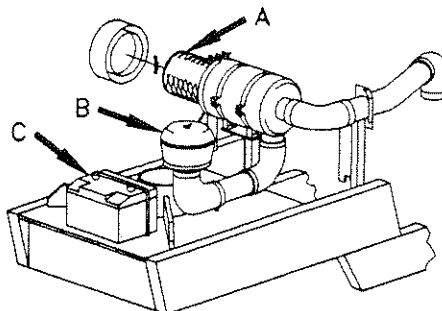


Figure 2

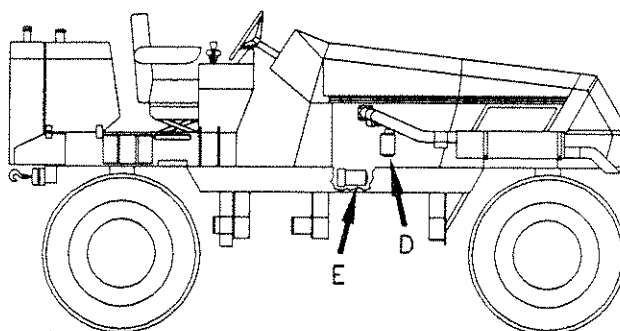


Figure 3

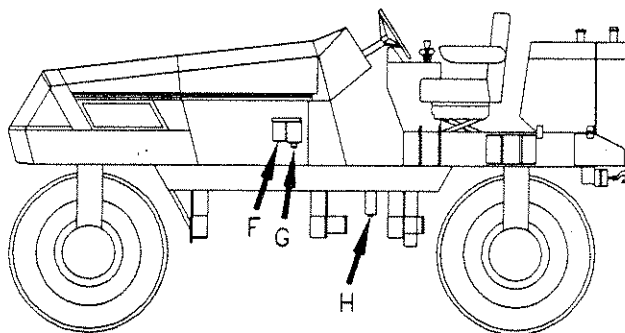


Figure 4

### AIR CLEANER

Filter Element (Figure 2, Item A, 500123). Clean and inspect every 250 hours.

### ENGINE OIL FILTER

Spin-on filter (Figure 3, Item D, 500120). Change every 250 hours.

### ENGINE FUEL FILTERS

Primary filter (Figure 4, Item G, 500122). Change every 500 hours.

Secondary filter (Figure 4, Item F, 500121). Change every 500 hours.

### HYDRAULIC FILTERS

Cartridge filter (Figure 4, Item H, 520349). Change every 500 hours.

Spin-on filter (Figure 3, Item E, 520351). Change every 500 hours.

### BATTERY

Group 24, 875 CCA, Maintenance Free (Figure 2, Item C). To remove battery, first remove the left engine cowling and the air pre-cleaner bowl (Figure 2, Item B).

## LUBRICATION

Left Front Deck

Figure 5

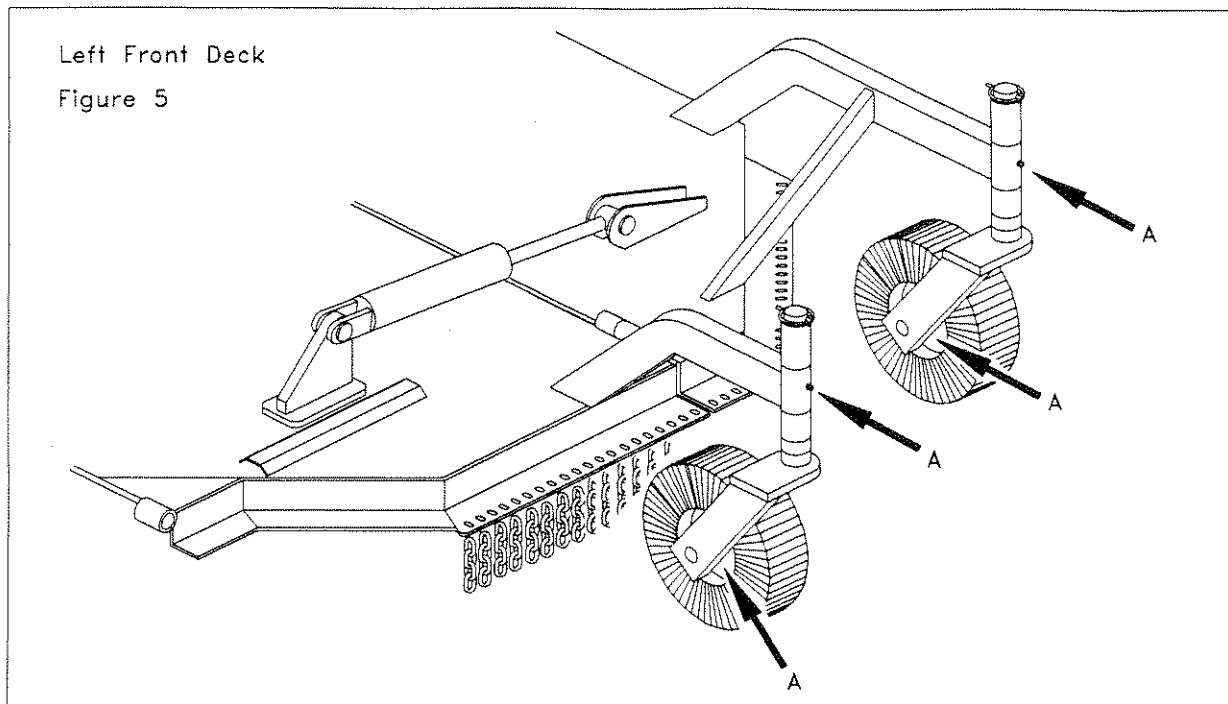


Figure 5 is for Left side. All grease points are duplicated on right side.  
A. Grease Daily - Wheels and wheel pivots.

Left Rear Deck

Figure 6

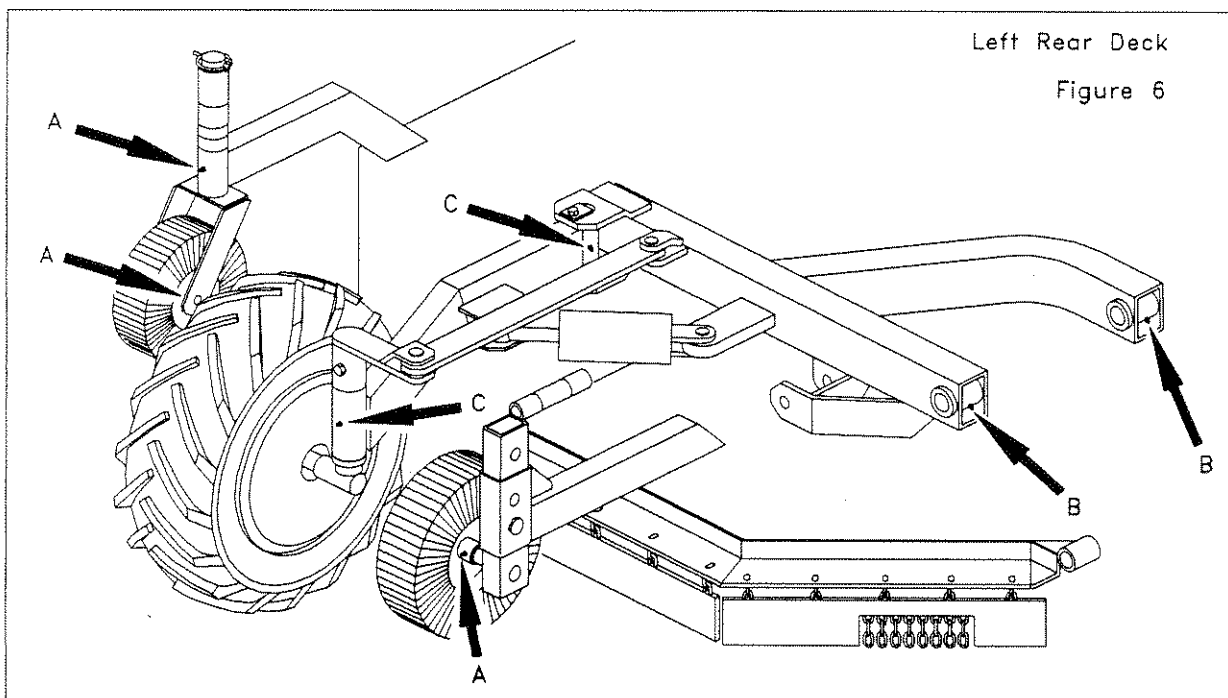
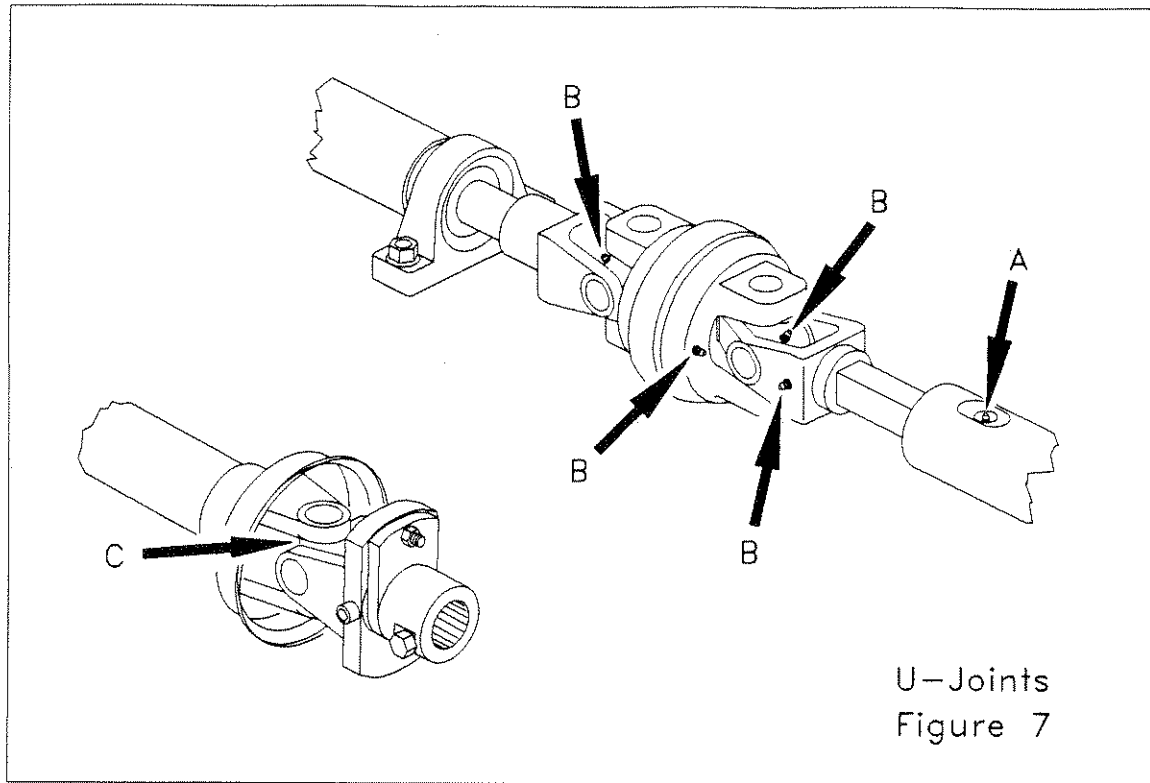
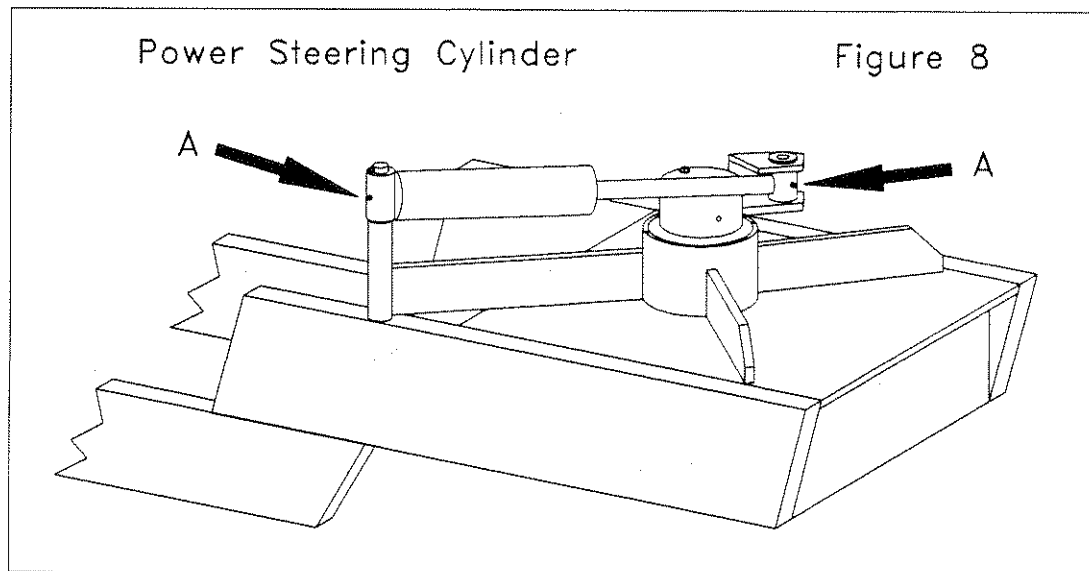


Figure 6 is for Left side. All grease points are duplicated on Right Side.  
A. Grease Daily - Wheels and wheel pivot.  
B. Grease Daily - Stabilizer pivots.  
C. Grease Weekly - Stabilizer wheel pivots

## LUBRICATION



- A. Grease Daily - Shaft Slide
- B. Grease Daily - Constant Velocity U-Joint
- C. Grease Daily - Outside U-Joints



- A. Grease Daily - Steering cylinder bushings

## DECK HEIGHT ADJUSTMENT

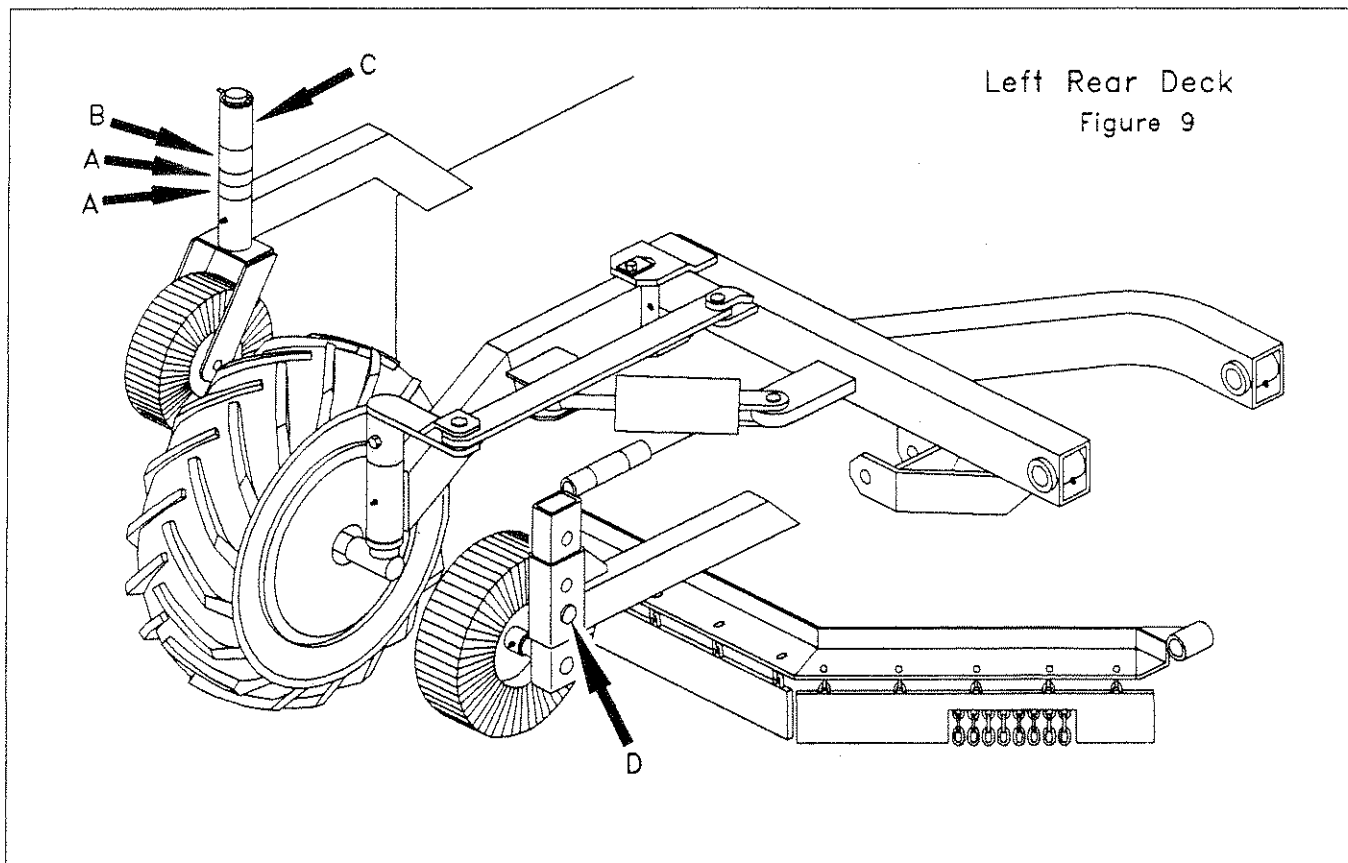
The cutting deck can be adjusted for cutting from 3" to 10".

### TO ADJUST CUTTING HEIGHT:

1. Raise one deck at a time, high enough that all the caster wheels are off the ground. See instructions under TILT on page 4 to raise the decks.

NOTE: MAXIMUM CUTTING HEIGHT FOR SLOPE MOWING IS 8". A HIGHER SETTING MAY RESULT IN DAMAGE TO THE PTO SHAFTS WHEN MOWING ON SLOPES.

2. Remove the two front, and outside rear, caster wheels. Replace the wheels, using the combination of 1" (A), 2" (B), and 3" (C) spacers below the bracket to get the desired cutting height.
3. Remove the height adjusting pin (D) from inside deck wheel. Adjust so wheel is same height as deck caster wheels. By alternating holes, you can adjust this wheel in 1" increments.
4. After adjusting the caster wheels on both decks, with both decks lowered and machine level, adjust the Acme Screw located on left side of tractor, above center of the deck (see Figure 10, page 10), until the center of the decks is level with outer decks.



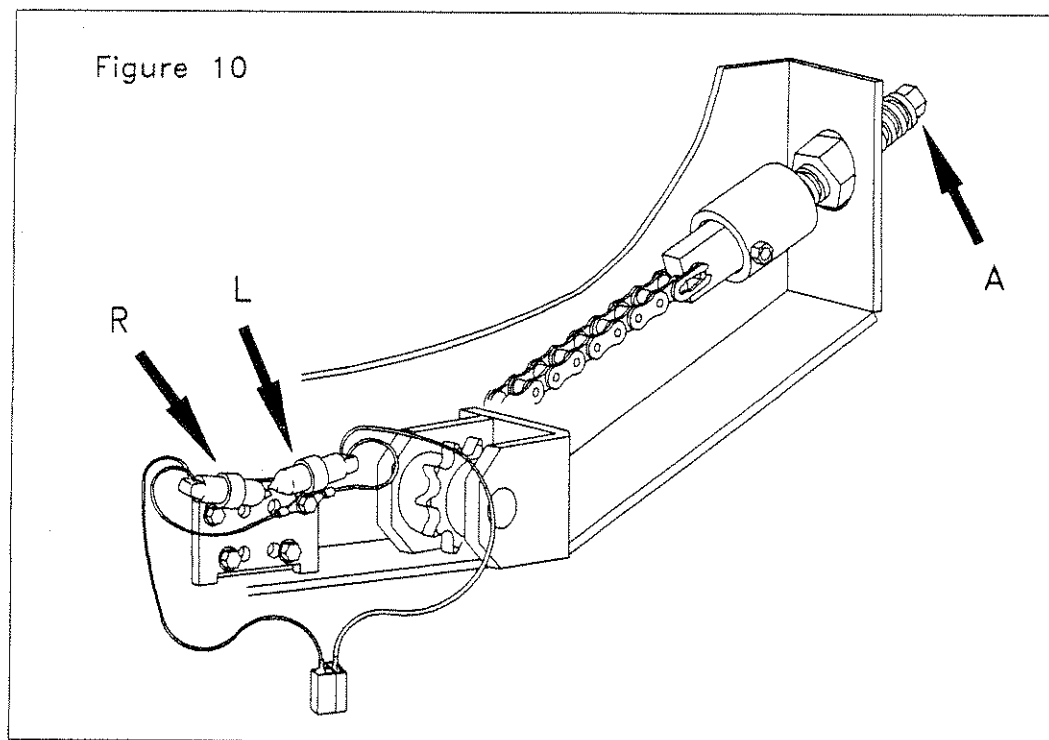
## LEVELING ADJUSTMENT

The Mercury switches which control the automatic leveling are located on the under frame of the tractor, above center of the mower deck. (See drawing below.)

### TO ADJUST MERCURY SWITCHES:

NOTE: LOOSEN MERCURY SWITCHES ENOUGH TO MOVE BY HAND WHEN ADJUSTING. THEY ARE MADE OF GLASS AND WILL BREAK IF HIT WITH HARD OBJECT.

1. Start engine and set at FULL THROTTLE.
2. With Auto Level ON and Operator on seat, hold TILT switch to the left until tractor is leaning to the left. Release switch.
3. If tractor does not return to upright, move outer end of the LEFT mercury switch (L) DOWN slightly. Repeat (2) and adjust until tractor returns to upright.
4. If tractor returns past upright, move outer end of the LEFT mercury switch UP slightly. Repeat (2) and adjust until tractor stops at upright.
5. Repeat the above procedure, tilting tractor to the RIGHT, and adjusting the RIGHT mercury switch (R).
6. If tractor continues to move right and left after returning to upright, move the outer end of BOTH mercury switches up slightly and repeat adjusting procedure.



## SHEAR BOLT

The blade shear bolts (A) are located on the PTO shaft next to the gear boxes. Always replace with a Grade 8, 5/16" X 2" bolt, and LOCK NUT.

IMPORTANT: MAKE SURE BLADES ARE PERPENDICULAR TO EACH OTHER BEFORE REPLACING SHEAR BOLTS.

## PTO DRIVE COLLAR

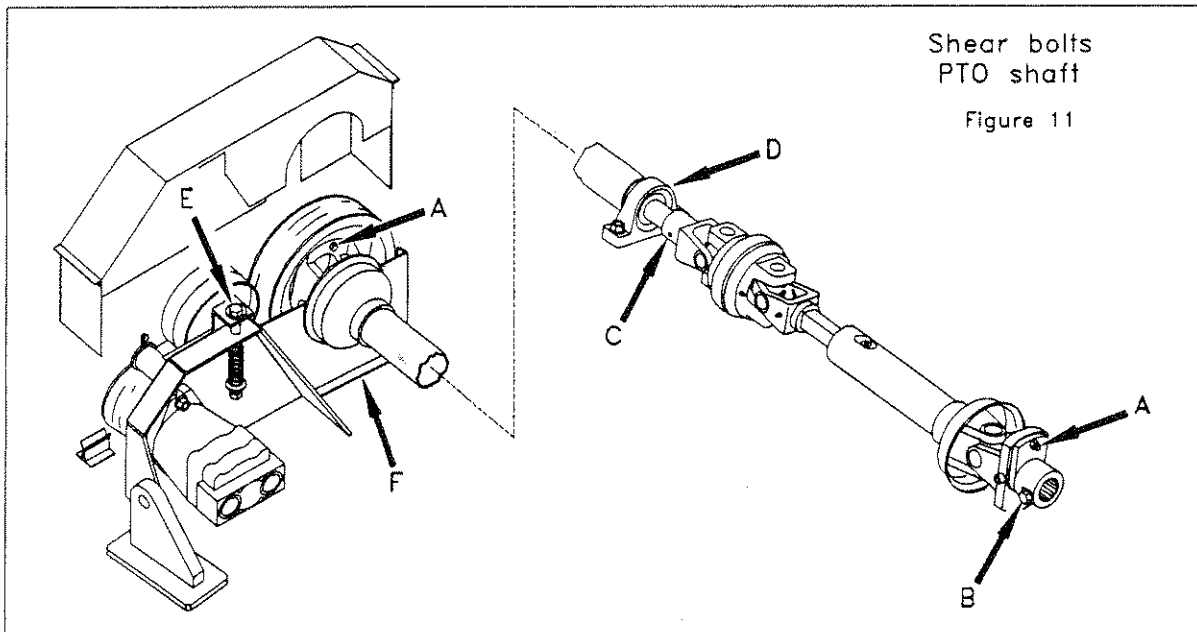
When replacing or installing the PTO Drive Collar, the Bolt (B) must be:

1. Grade 8, 7/16 X 2 1/2 NF Bolt
2. Torqued to 120 foot pounds

## BELT

TO REMOVE OR REPLACE DRIVE BELT:

1. Loosen belt idler pulley Tightener Bolt (E).
2. Remove Guard (F).
3. Remove the two bolts from Pillow Block Bearing (D).
4. Loosen two set screws (C). Slide PTO Shaft apart.
5. Slip belt off over PTO Shaft.



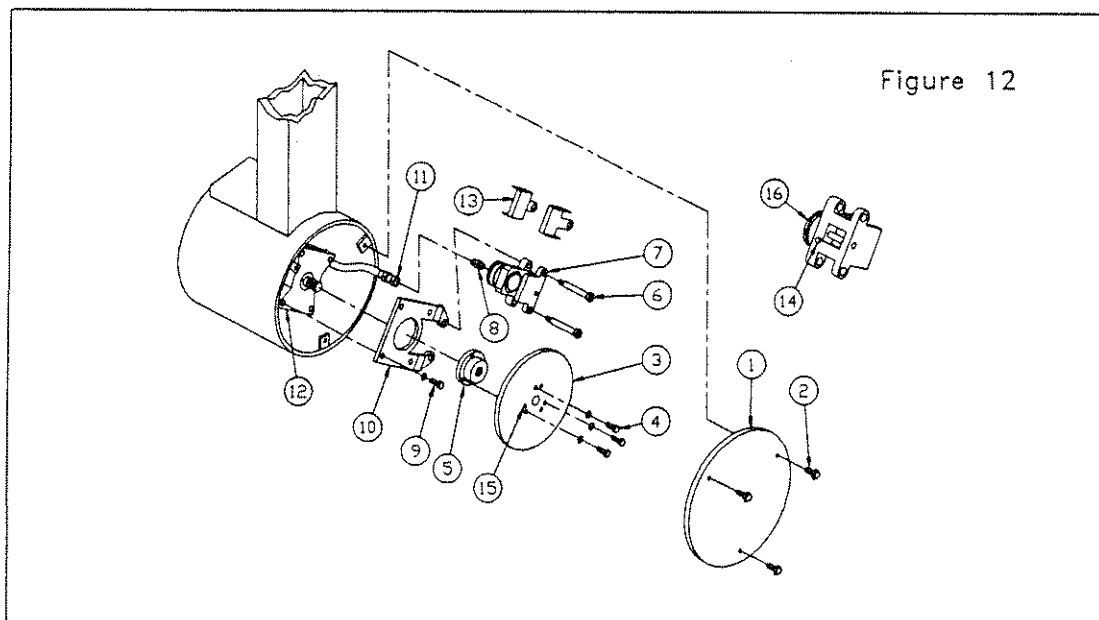
## WHEEL DRIVE MOTOR AND BRAKES

1. Remove the three bolts (2) from the Wheel Motor Cover (1) to remove the Wheel Motor Cover.
2. Remove the two caliper brake mounting bolts (6).
3. Release the Brake Disk (3) from the bushing (5) by removing the three bolts (4), and re-inserting them into the threaded holes (15).
4. Remove the Hydraulic Hose (11) from caliper, and plug Hydraulic Hose and open Port.
5. Remove Caliper (7) from Disk by backing out set screw (14) and rotate threaded Actuator (16) counter-clockwise enough to loosen the grip on the disk.

**NOTE: DO NOT REMOVE THE CALIPER UNLESS YOU NEED TO REPAIR OR REPLACE THE BRAKE DISK OR CALIPER.**

### TO REASSEMBLE BRAKE AND MOTOR

6. Place brake caliper (7) on Brake Disk (3). Attach Brake Disk (3) to Bushing (5) with the three 1/4" X 1 1/2" bolts (4). Tighten bolts.
7. Insert the two shoulder bolts (6) to locate the caliper on the disk.
8. Mark caliper location on disk; remove disk and caliper.
9. Tighten Actuator by rotating clockwise until snug against disk; turn an additional 1 to 1 1/3 turns, and tighten set screw. This clamps the caliper to the disk with the proper pre-load and position.
10. Attach hydraulic hose to brake.
11. Re-install disk (3) on motor shaft; torque bolts (4) to 9 ft./lbs.
12. Install the two shoulder bolts (6) through caliper. Make sure the caliper slides freely on shoulder bolts after tightening.



## HYDRAULIC SYSTEM

OIL LEVEL - Check daily. Maintain oil level between the F and L marks on dipstick. Use 15W-40 Motor Oil.

FILTERS - Change RETURN LINE FILTER and SYSTEM CHARGE FILTER after first 50 hours, then every 500 hours, or ANNUALLY, whichever comes first.

OIL CHANGE - Change oil every 1,000 hours.  
Oil type: 15W-40 Motor Oil, designated SAE J183.  
Clean tank at time of oil change.

PUMP and MOTOR SERVICE - See enclosed Service Manual for SUNDSTRAND M-46 Pump and Motor.

TORQUE HUB - Change oil after first 50 hours, then annually or every 1,000 hours, whichever comes first.  
Use oil type SAE EP 90.

TROUBLE SHOOTING - Contact your authorized DewEze Dealer, or DewEze Mfg., Inc., Harper, KS 67058.  
Phone 800-835-1042

## DECK GEAR BOXES

OIL TYPE - SAE 90 EP

Check oil level every 50 hours. Fill to Oil Level Plug.

Change oil annually.

## TIRES

DRIVE TIRES - Maintain at 16 psi. Tires are filled at factory with 90 oz. tire sealant.

JACK POINT - FOR REMOVING DRIVE WHEELS - Place floor jack under Wheel Motor Housing. Block opposite wheel to prevent tractor from rolling.

STABILIZER TIRES - Maintain at 30 psi. Tires are filled at factory with 40 oz. tire sealant.



## TOWING

### CAUTION

DO NOT TOW THIS MACHINE  
WITHOUT FIRST DISENGAGING  
THE TORQUE-HUB WHEEL UNITS

#### TO DISENGAGE THE TORQUE-HUBS FOR TOWING:

1. Disengage the Torque-Hub on both front and rear wheel motors.
2. Remove the two bolts (1) holding disengagement cap (2) onto Torque-Hub.
3. Turn disengagement cap over and install onto hub with protruding center towards the inside. Tighten bolts.

NOTE: You may need to rock the wheel slightly for the cap to push in completely.

4. Reverse the above procedure after towing to put machine in driving mode.

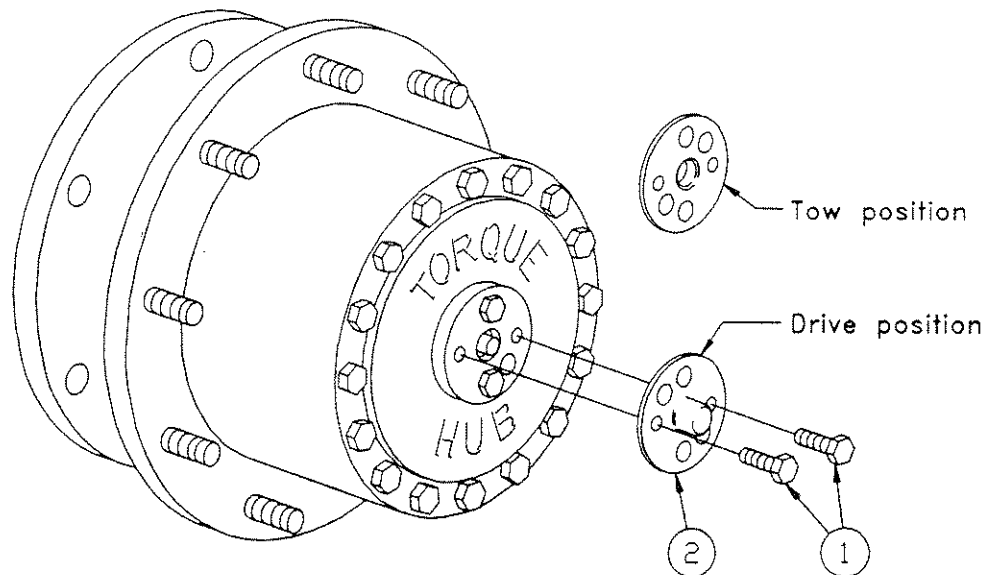
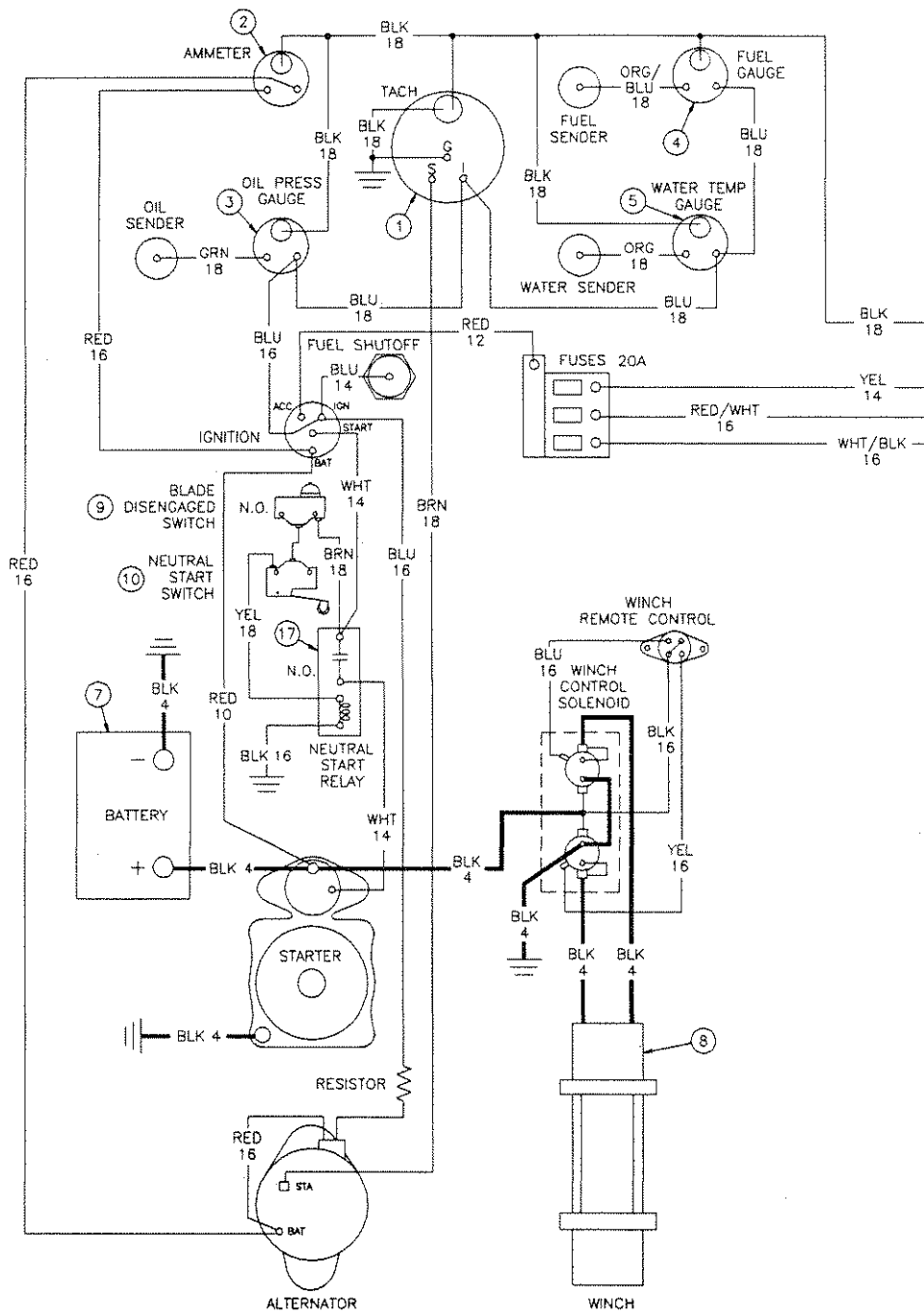


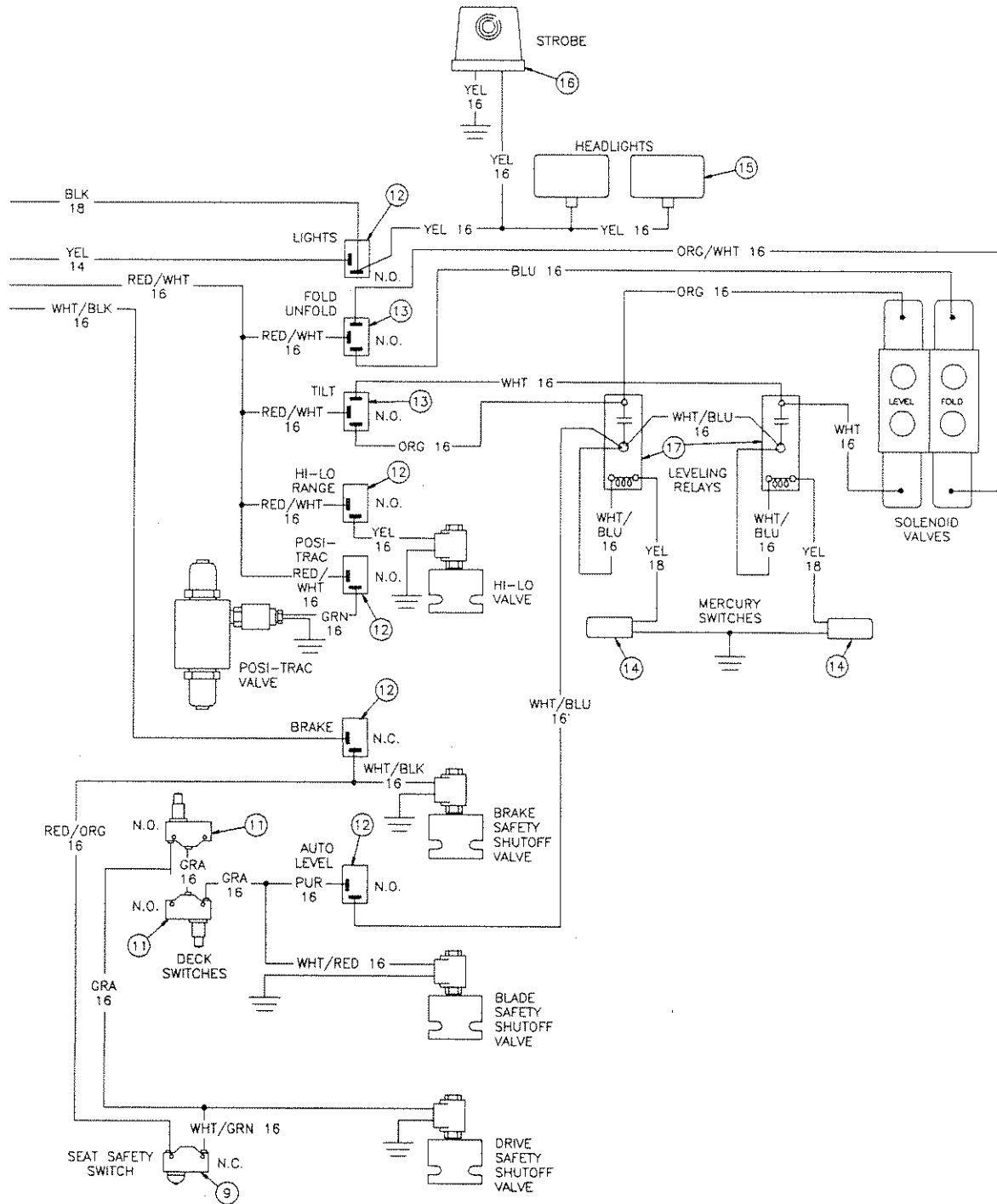
Figure 13

# ELECTRIC SCHEMATIC



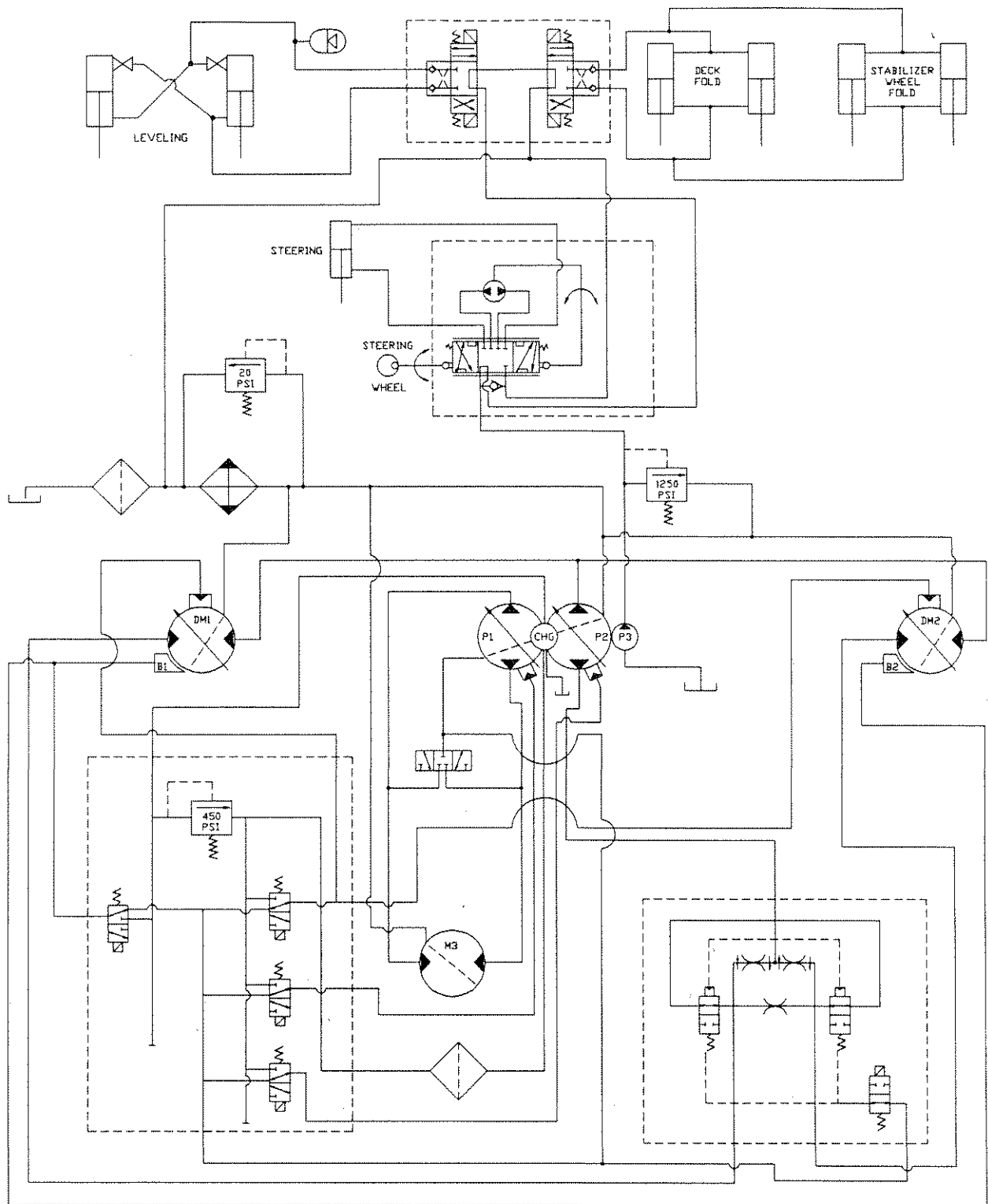
ITEM	PART NO.	DESCRIPTION			
1	530061	Tachometer	6	530069	Ignition switch
2	530063	Ammeter	7	530060	Battery
3	530064	Oil press. gauge	8	540135	Winch
4	530065	Fuel gauge	9	530038	Switch, blade/seat
5	530062	Water temp. gauge	10	530058	Switch, neutral start

# ELECTRIC SCHEMATIC



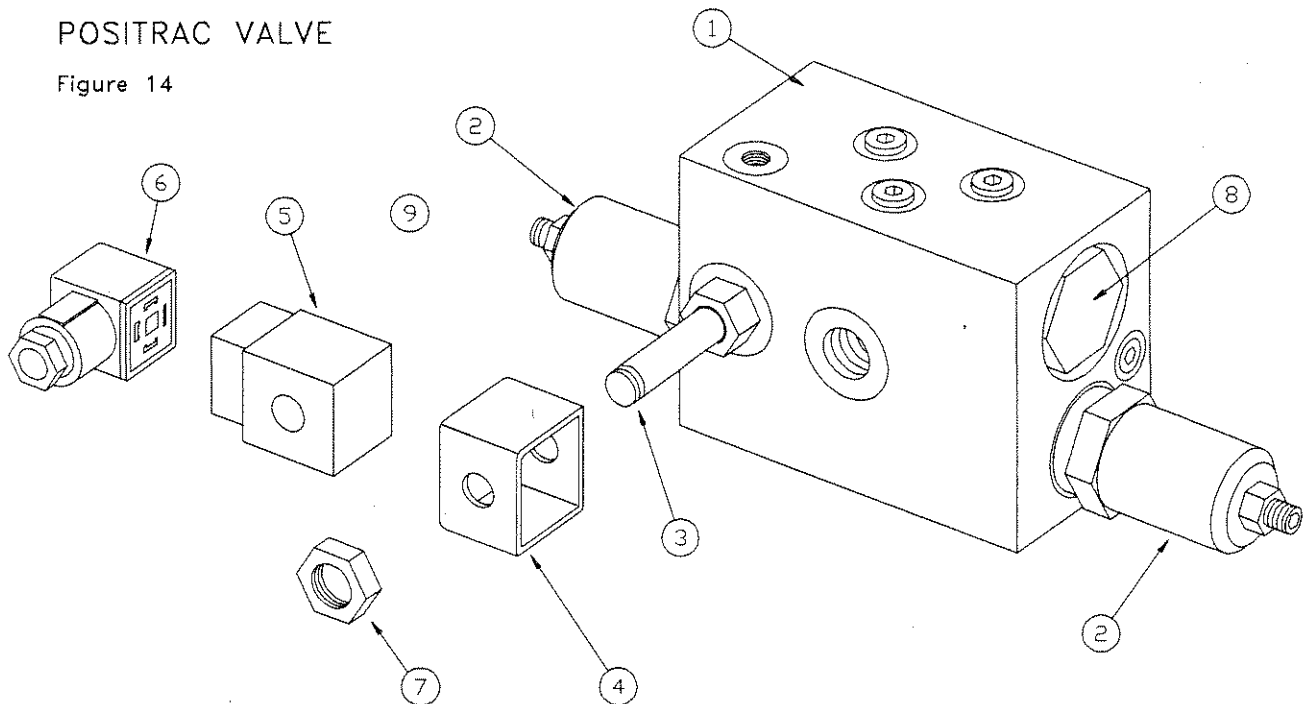
ITEM	PART NO.	DESCRIPTION			
11	530059	Switch, deck	14	530085	Mercury switch assy.
12	530007	Switch, SPST	15	530044	Headlight
13	530020	Switch, SPDT	16	530045	Strobe
			17	530028	Relay

# MC-144 HYDRAULIC SCHEMATIC



## POSITRAC VALVE

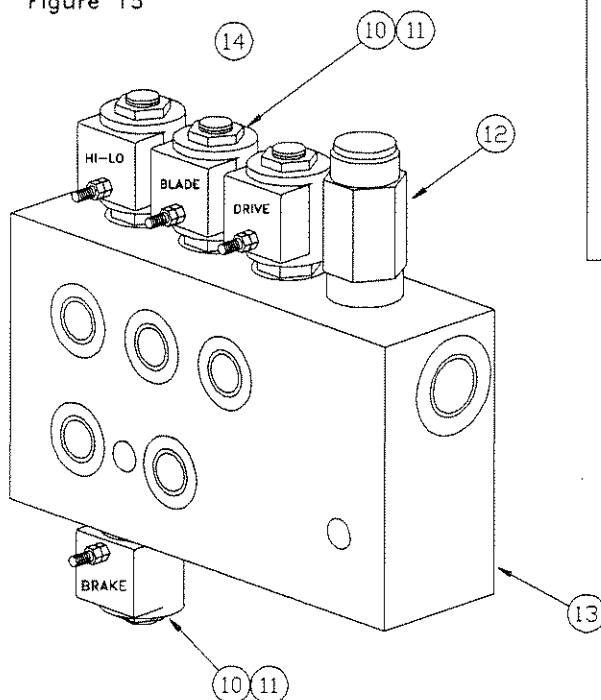
Figure 14



ITEM	PART NO.	DESCRIPTION
1	520379	Valve body
2	520373	Relief valve
3	520378	Solenoid valve
4	520376	Solenoid bracket
5	520374	Coil
6	520375	Connector
7	520377	Nut
8	520372	Flow divider / combiner
9	520345	Complete valve assy (Items 1-8)

## CONTROL BLOCK

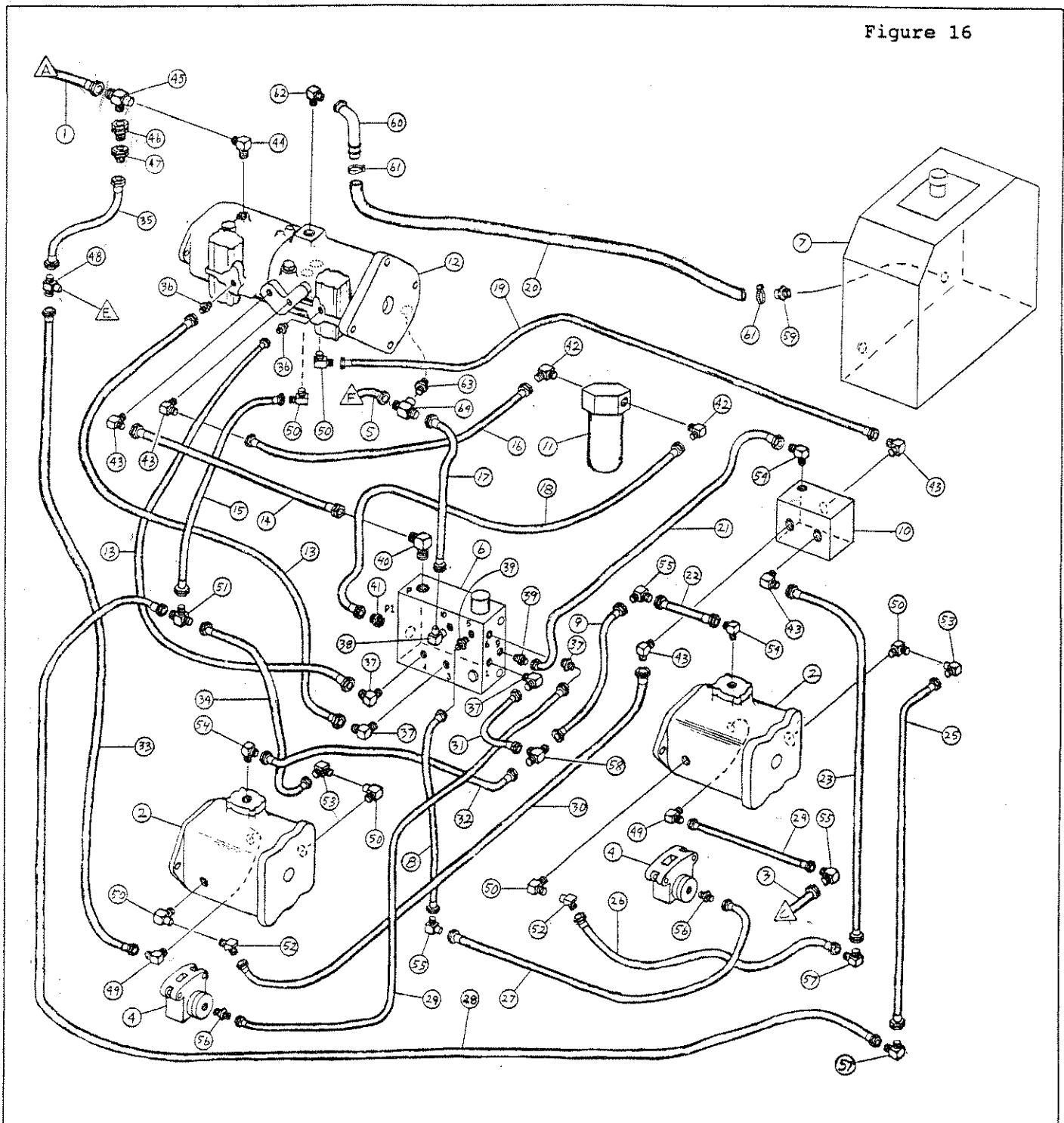
Figure 15



ITEM	PART NO.	DESCRIPTION
10	520369	Solenoid valve
11	520370	Coil
12	520384	Relief valve
13	520381	Valve body
14	520164	Complete control block (Items 10-13)

# WHEEL DRIVE AND BRAKES

Figure 16



Continued on page 24



Continued on page 24



Continued on page 21



Continued on page 23

## INCLUDES THE FOLLOWING COMPONENTS:

ITEM # 2 WHEEL MOTORS  
ITEM # 4 BRAKES  
ITEM # 6 CONTROL BLOCK

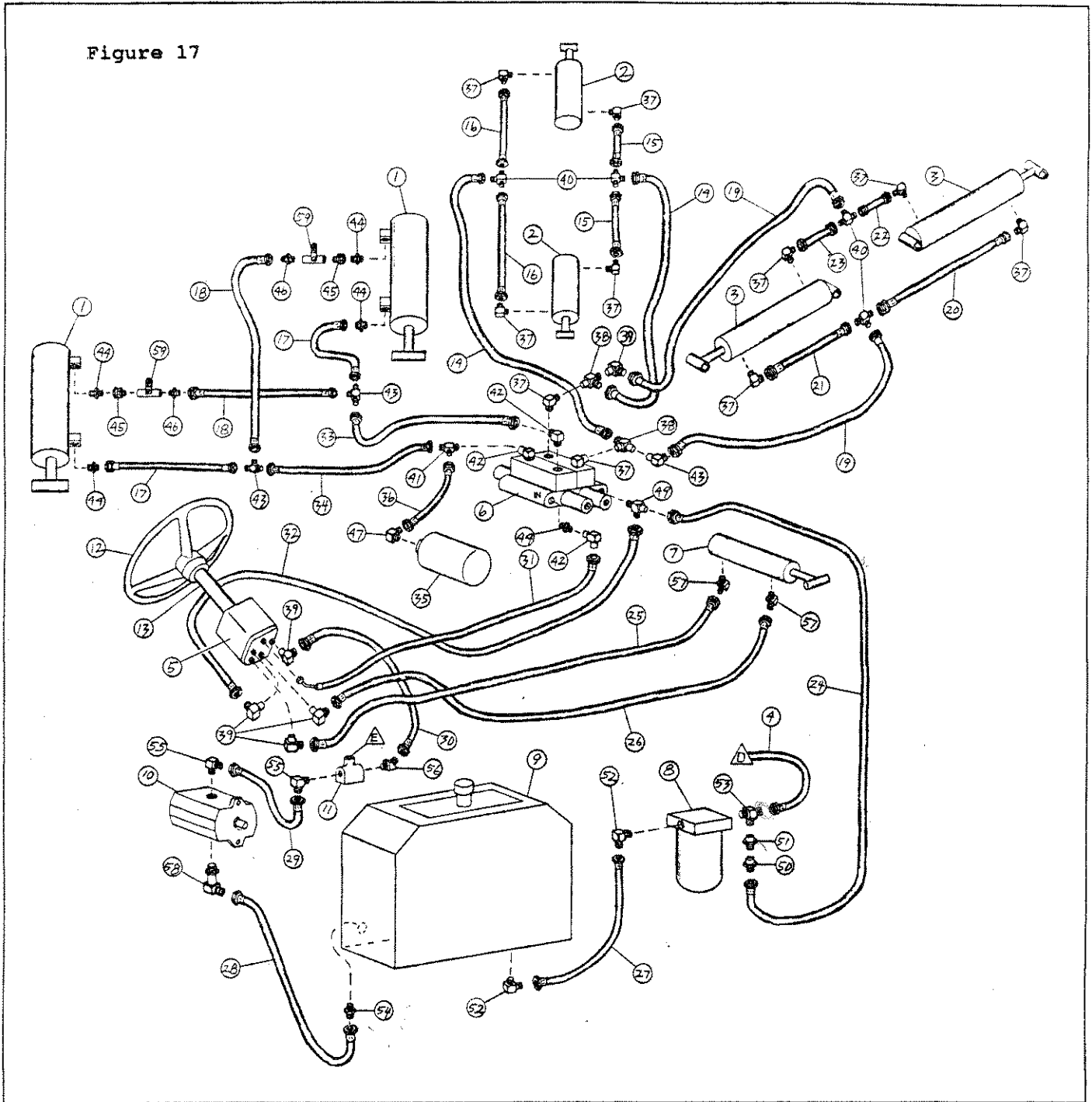
ITEM #10 POSI-TRAC  
ITEM #11 FILTER ASSEMBLY, DRIVE SYSTEM  
ITEM #12 PROPULSION PUMP

# WHEEL DRIVE AND BRAKES

ITEM	PART NO.	DESCRIPTION	ITEM	PART NO.	DESCRIPTION
1.	520315	Hydraulic hose assembly	45.	520018	Adaptor, tee
2.	520158	Wheel motor	46.	520201	Adaptor
3.	520308	Hydraulic hose assembly	47.	520344	Adaptor
4.	520347	Brake assembly	48.	520198	Adaptor, tee
5.	520305	Hydraulic hose assembly	49.	520186	Adaptor, 90 degree (2)
6.	520164	Control block	50.	520187	Adaptor, 90 degree (6)
7.	510653	Oil reservoir	51.	520181	Adaptor, tee
8.	520306	Hydraulic hose assembly	52.	520205	Adaptor, 45 degree (2)
9.	520307	Hydraulic hose assembly	53.	520207	Adaptor, 90 degree (2)
10.	520345	Posi-trac valve	54.	520118	Adaptor, 90 degree (3) 4" 5/4" MD
11.	520348	Filter assembly	55.	520214	Adaptor, 90 degree bulkhead (3)
	520349	Filter, cartridge	56.	520116	Adaptor, (2)
12.	520156	Propulsion pump assembly	57.	520215	Adaptor, 90 degree swivel (2)
13.	520321	Hydraulic hose assembly (2)	58.	520180	Adaptor, tee
14.	520327	Hydraulic hose assembly	59.	520184	Hose barb
15.	520301	Hydraulic hose assembly	60.	520177	Hose barb, bent tube
16.	520316	Hydraulic hose assembly	61.	500107	Hose clamp (2)
17.	520322	Hydraulic hose assembly	62.	520188	Adaptor, 90 degree
18.	520328	Hydraulic hose assembly	63.	520190	Adaptor
19.	520302	Hydraulic hose assembly	64.	520210	Adaptor, tee
20.	520314	Hydraulic hose, suction	65.	520356	Cap, dipstick
21.	520319	Hydraulic hose assembly			
22.	520325	Hydraulic hose assembly			
23.	520298	Hydraulic hose assembly			
24.	520324	Hydraulic hose assembly			
25.	520300	Hydraulic hose assembly			
26.	520299	Hydraulic hose assembly			
27.	520323	Hydraulic hose assembly			
28.	520297	Hydraulic hose assembly			
29.	520320	Hydraulic hose assembly			
30.	520295	Hydraulic hose assembly			
31.	520318	Hydraulic hose assembly			
32.	520317	Hydraulic hose assembly			
33.	520294	Hydraulic hose assembly			
34.	520296	Hydraulic hose assembly			
35.	520293	Hydraulic hose assembly			
36.	520216	Adaptor (2)			
37.	520024	Adaptor, 90 degree (4)			
38.	520026	Adaptor, 90 degree			
39.	520189	Adaptor (2)			
40.	520197	Adaptor, 90 degree			
41.	520193	Adaptor			
42.	520202	Adaptor, 90 degree (2)			
43.	520029	Adaptor, 90 degree (5)			
44.	520343	Adaptor, 90 degree			

# CHARGE PUMP, STEERING, & CYLINDERS

Figure 17



**D** Continued on page 24

**E** Continued on page 19

## INCLUDES THE FOLLOWING COMPONENTS:

ITEM # 2    OUTRIGGER CYLINDERS  
ITEM # 1    LEVELING CYLINDERS  
ITEM # 3    MOWER DECK CYLINDERS  
ITEM # 6    VALVES

ITEM # 7    POWER STEERING  
ITEM # 8    FILTER ASSEMBLY, CYLINDER SYSTEM  
ITEM #10    CHARGE PUMP  
ITEM #35    ACCUMULATOR

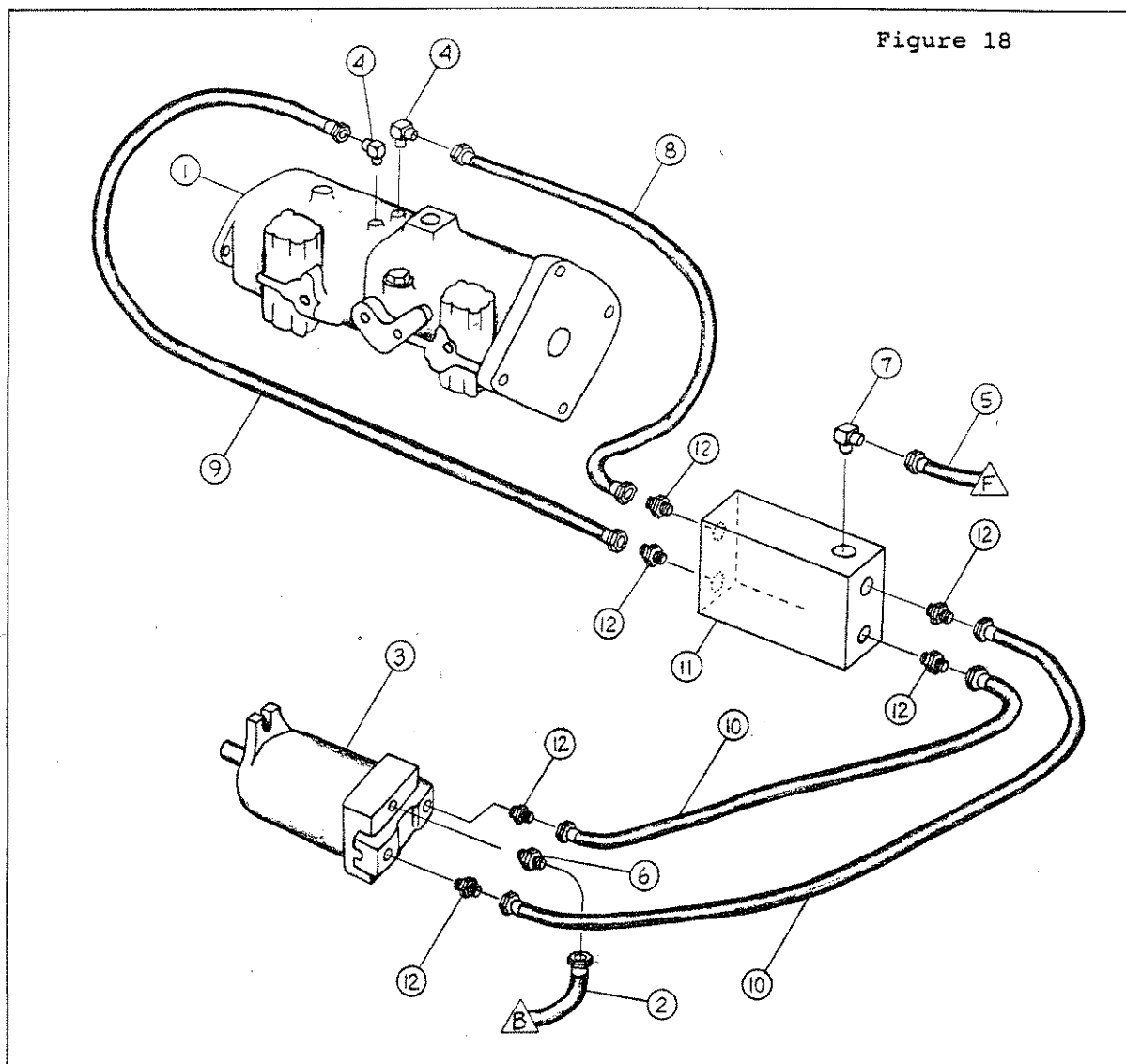


# CHARGE PUMP, STEERING, & CYLINDERS

ITEM	PART NO.	DESCRIPTION	ITEM	PART NO.	DESCRIPTION
1.	520147	Cylinder, outrigger	44.	520093	Adaptor (5)
2.	520146	Cylinder, leveling	45.	520211	Adaptor (2)
3.	520148	Cylinder, deck fold	46.	520182	Adaptor (2)
4.	520312	Hydraulic hose assembly	47.	520130	Adaptor, 90 degree
5.	520161	Steering pump	48.	520206	Adaptor, 90 degree (2)
6.	520217	Valve assembly, two bank	49.	520340	Adaptor, tee
	520009	Valve, single	50.	520200	Adaptor
	520010	Valve, single, w/A lock	51.	520201	Adaptor
	520008	Valve, A lock attachment	52.	520203	Adaptor, 90 degree (2)
7.	520221	Cylinder, steering	53.	520204	Adaptor, tee
8.	520350	Filter assembly	54.	520183	Adaptor
	520351	Filter	55.	520185	Adaptor, 90 degree (2)
9.	510653	Oil reservoir	56.	520094	Adaptor, 45 degree
10.	520157	Charge pump	57.	520021	Adaptor, 45 degree
11.	520352	Steering relief valve	58.	520341	Adaptor, extra long
12.	550004	Steering wheel	59.	520342	Ball valve
13.	520162	Steering column	60.	520356	Cap, dipstick
14.	520283	Hydraulic hose assembly (2)			
15.	520285	Hydraulic hose assembly (2)			
16.	520284	Hydraulic hose assembly (2)			
17.	520287	Hydraulic hose assembly (2)			
18.	520286	Hydraulic hose assembly (2)			
19.	520335	Hydraulic hose assembly (2)			
20.	520332	Hydraulic hose assembly			
21.	520329	Hydraulic hose assembly			
22.	520331	Hydraulic hose assembly			
23.	520330	Hydraulic hose assembly			
24.	520311	Hydraulic hose assembly			
25.	520310	Hydraulic hose assembly			
26.	520309	Hydraulic hose assembly			
27.	520313	Hydraulic hose assembly			
28.	520326	Hydraulic hose assembly			
29.	520292	Hydraulic hose assembly			
30.	520291	Hydraulic hose assembly			
31.	520280	Hydraulic hose assembly			
32.	520281	Hydraulic hose assembly			
33.	520289	Hydraulic hose assembly			
34.	520290	Hydraulic hose assembly			
35.	520220	Accumulator			
36.	520282	Hydraulic hose assembly			
37.	520024	Adaptor, 90 degree (10)			
38.	520017	Adaptor, tee (2)			
39.	520020	Adaptor, 90 degree (4)			
40.	520180	Adaptor, tee (4)			
41.	520018	Adaptor, tee			
42.	520026	Adaptor, 90 degree (3)			
43.	520016	Adaptor, tee (2)			

DECK DRIVE MOTOR  
PROPULSION PUMP  
HOT OIL SHUTTLE

Figure 18



△ Continued on page 24

△ Continued on page 19

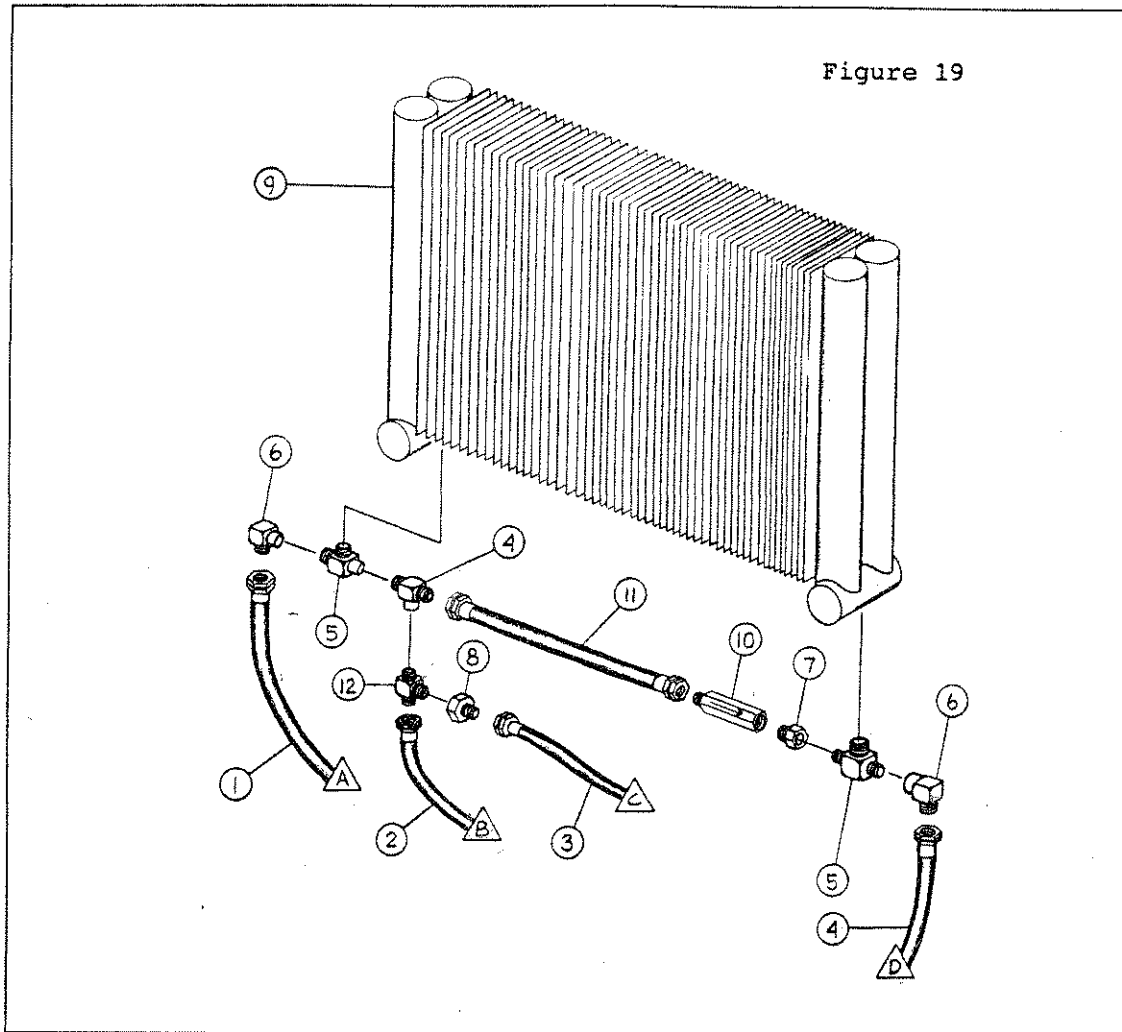
INCLUDES THE FOLLOWING COMPONENTS:

ITEM # 1      PROPULSION PUMP  
ITEM # 3      MOTOR, DECK DRIVE  
ITEM #11      HOT OIL SHUTTLE

ITEM	PART NO.	DESCRIPTION	ITEM	PART NO.	DESCRIPTION
1.	520156	Hydraulic pump assembly	8.	520303	Hydraulic hose
2.	520334	Hydraulic hose	9.	520304	Hydraulic hose
3.	520159	Motor, deck drive	10.	520333	Hydraulic hose
4.	520187	Adaptor, 90 degree	11.	520338	Hot oil shuttle
5.	520305	Hydraulic hose	12.	520195	Adaptor, straight
6.	520224	Adaptor, straight	13.	520196	Adaptor, straight
7.	520029	Adaptor, 90 degree			

# HEAT EXCHANGER RELIEF VALVE

Figure 19



△ A Continued on page 19  
△ B Continued on page 23

△ C Continued on page 19  
△ D Continued on page 21

## INCLUDES THE FOLLOWING COMPONENTS:

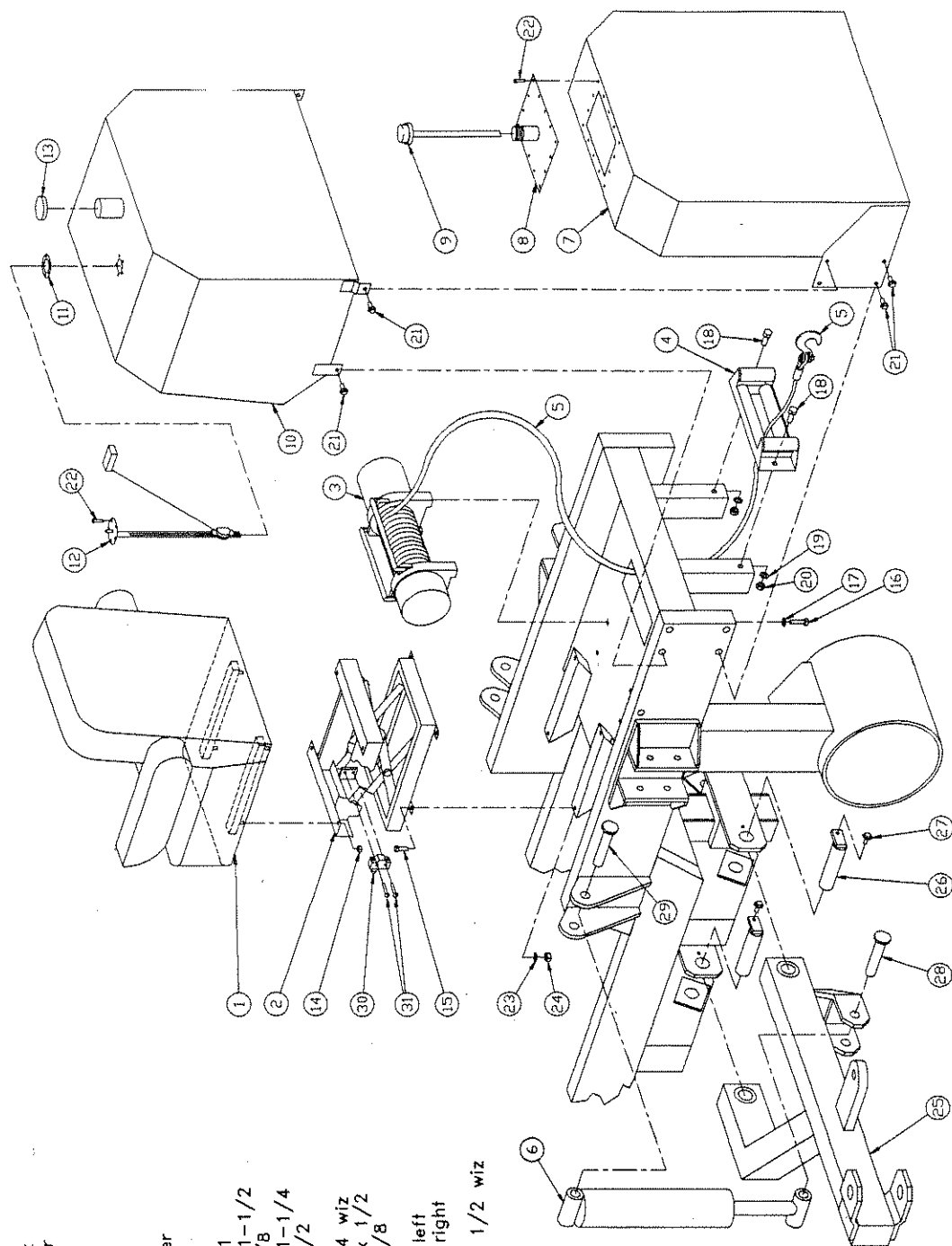
# 9 Heat Exchange  
#10 Check Valve

ITEM	PART NO.	DESCRIPTION	ITEM	PART NO.	DESCRIPTION
1.	520315	Hydraulic hose	7.	520225	Adaptor, straight
2.	520334	Hydraulic hose	8.	520200	Adaptor, straight
3.	520308	Hydraulic hose	9.	520160	Heat exchanger
4.	520312	Hydraulic hose	10.	520337	Check valve
5.	520199	Adaptor, tee	11.	520288	Hydraulic hose
6.	520207	Adaptor, 90 degree	12.	520208	Adaptor, tee

Figure 20

# REAR TRACTOR ASSEMBLY

ITEM	PART NO.	DESCRIPTION
1	510790	Seat
2	511080	Suspension
3	540135	Winch
4	540136	Winch roller
5	540137	Cable and hook
6	520147	Leveling cylinder
7	510653	Hyd. reservoir
8	511081	Top plate
9	520356	Hyd. cap
10	510654	Fuel tank
11	500172	Gasket
12	500171	Fuel level sender
13	500069	Gas cap
14	510208	Nut, 5/16
15	510063	Bolt, 3/8NC x 1-1/2
16	510351	Bolt, 3/8NC x 3/8
17	510365	Flat washer, 3/8
18	510924	Bolt, 1/2NF x 1-1/4
19	510219	Lock washer, 1/2
20	510225	Nut, 1/2
21	510401	Bolt, 3/8 x 3/4 w/z
22	511005	Screw, 10-32 x 1/2
23	510271	Lock washer, 3/8
24	510272	Nut, 3/8
25	510622	Stabilizer arm, left
26	510623	Stabilizer arm, right
27	510918	Pin
28	510196	Bolt, 5/16NC x 1/2 w/z
29	511078	Pin, rod
30	511079	Pin, base
31	530038	Switch, seat
	540089	Screw, 6-32x1



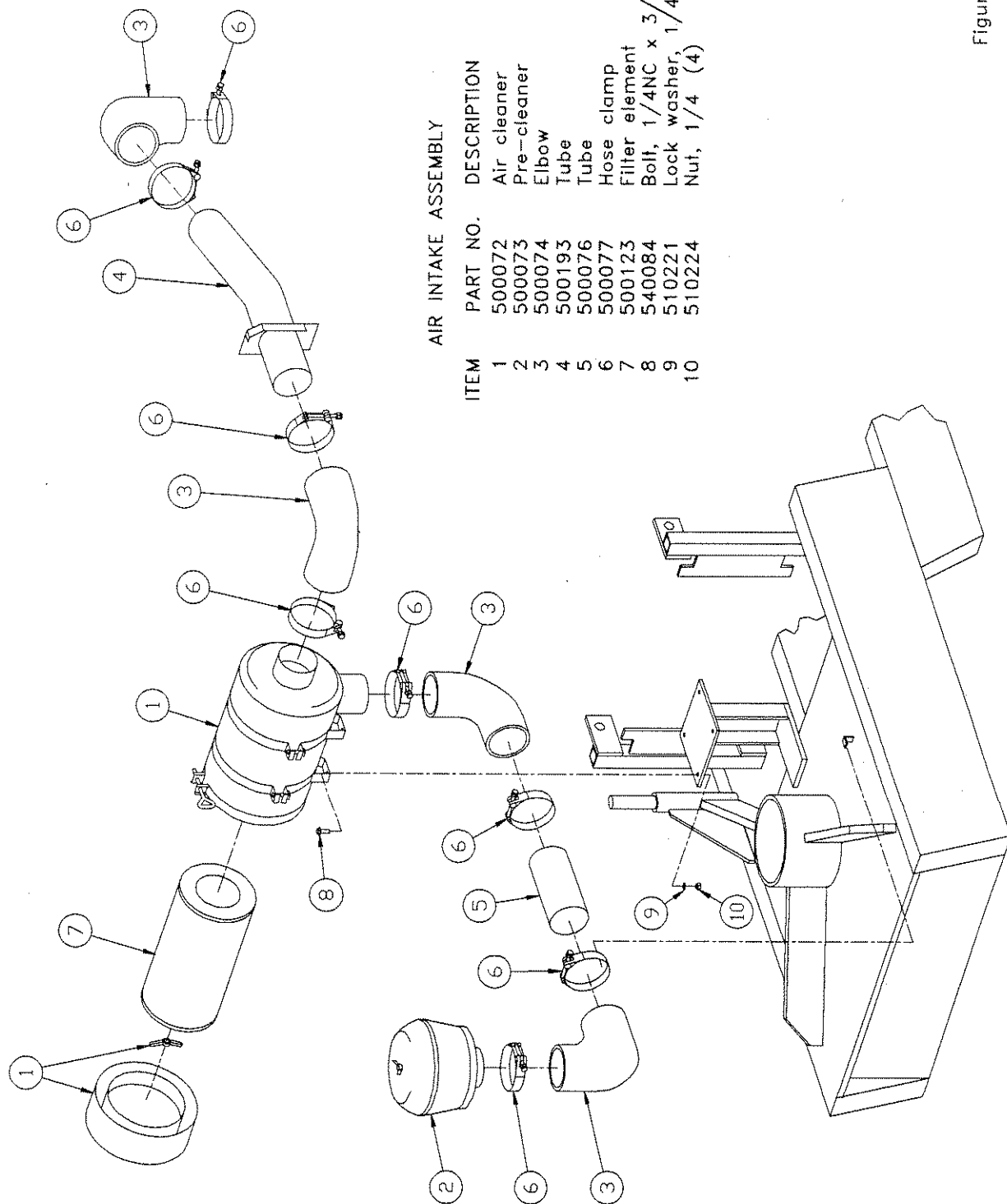
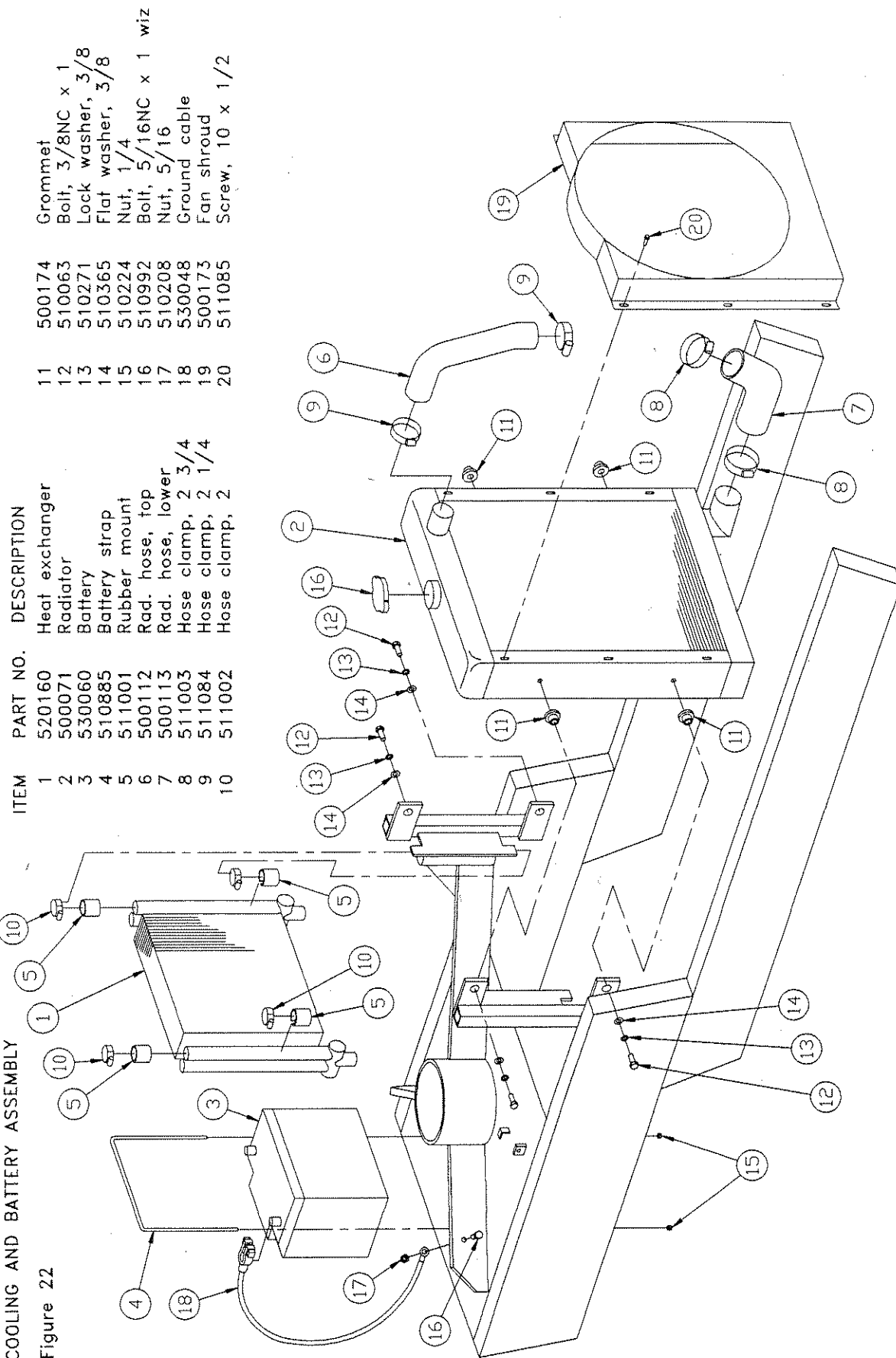


Figure 21

# COOLING AND BATTERY ASSEMBLY

Figure 22



ITEM	PART NO.	DESCRIPTION
1	520160	Heat exchanger
2	500071	Radiator
3	530060	Battery
4	510885	Battery strap
5	511001	Rubber mount
6	500112	Rad. hose, top
7	500113	Rad. hose, lower
8	511003	Hose clamp, 2 3/4
9	511084	Hose clamp, 2 1/4
10	511002	Hose clamp, 2

11	500174	Grommet
12	510063	Bolt, 3/8NC x 1
13	510271	Lock washer, 3/8
14	510365	Flat washer, 3/8
15	510224	Nut, 1/4
16	510992	Bolt, 5/16NC x 1 w/iz
17	510208	Nut, 5/16
18	530048	Ground cable
19	500173	Fan shroud
20	511085	Screw, 10 x 1/2

# EXHAUST ASSEMBLY

ITEM	PART NO.	DESCRIPTION			
1	511090	Muffler assy.	5	500087	Muffler clamp
2	540112	Flex tube	6	510749	Muffler strap
3	510995	Exhaust tube	7	540084	Bolt, 1/4NCx3/4 wiz
4	500088	Muffler clamp	8	510224	Nut, 1/4

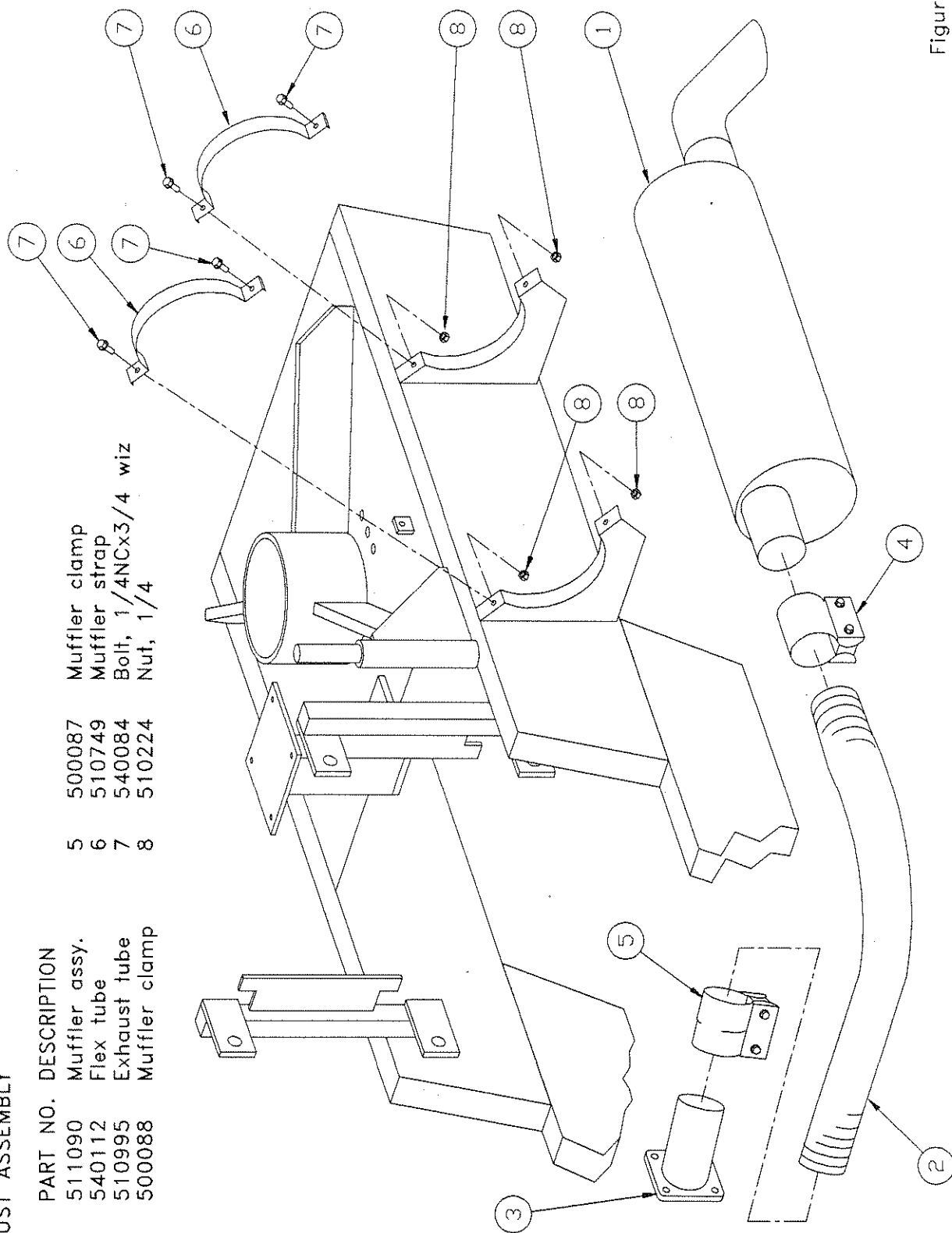


Figure 23

# STEERING ASSEMBLY

ITEM	PART NO.	DESCRIPTION
1	510662	Frame
2	510616	Steering spindle
3	510595	Seal plate
4	510891	Steering collar
5	510669	Hose separator
6	510606	Bearing
7	510607	Race
8	510608	Seal, upper
9	510609	Seal, lower
10	510610	Nut, spindle
11	510611	Lock washer
12	510930	Pin, cylinder
13	510932	Bushing
14	510175	Cotter pin
15	540084	Bolt, 1/4NC x 3/4 w/z
16	510161	Set screw, 3/8 x 1/2
17	510254	Set screw, 5/16 x 1/2
18	511083	Key, 3/8 x 2.30
19	520221	Steering cylinder (inc. #13)
20	510174	Grease zerck

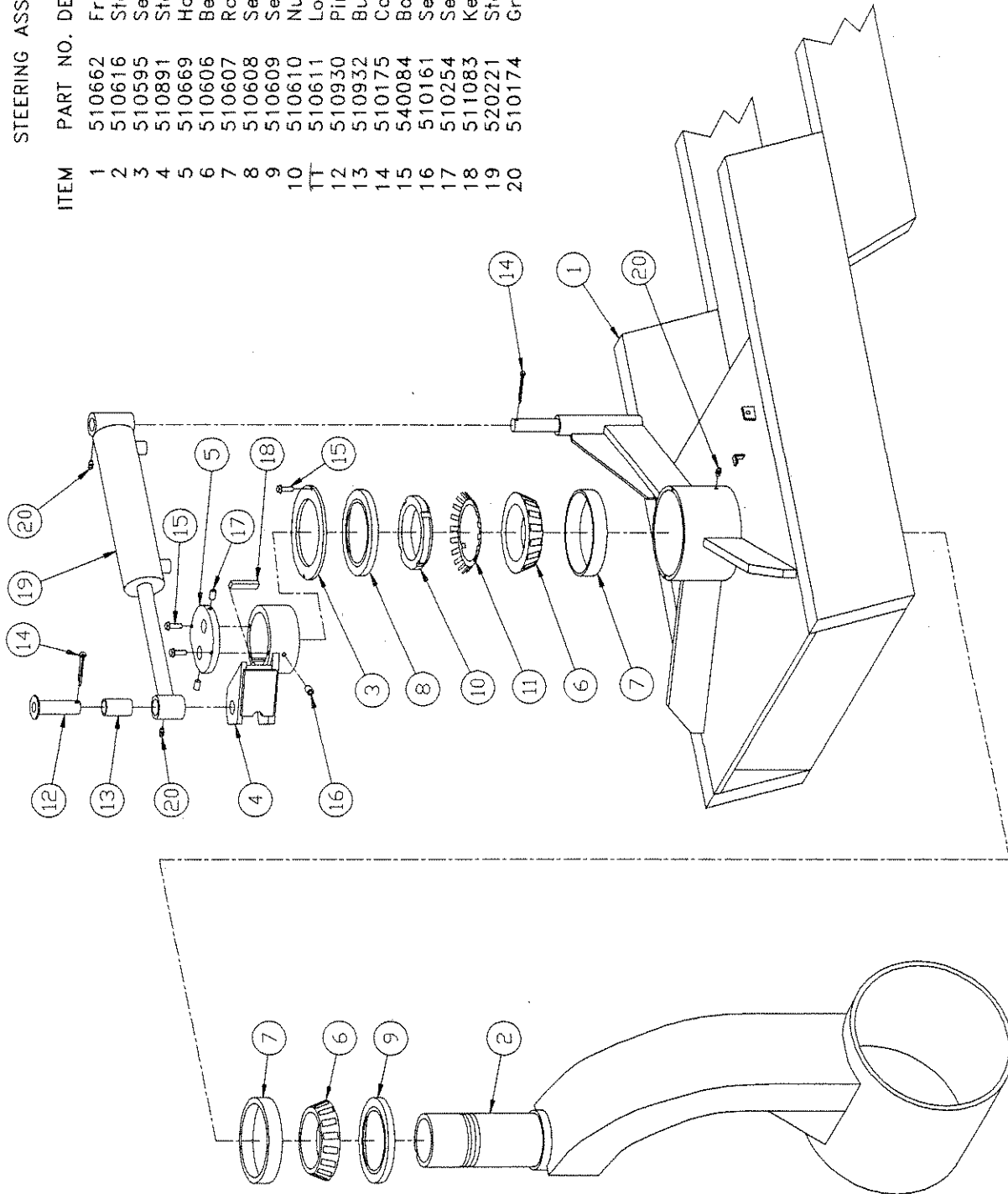
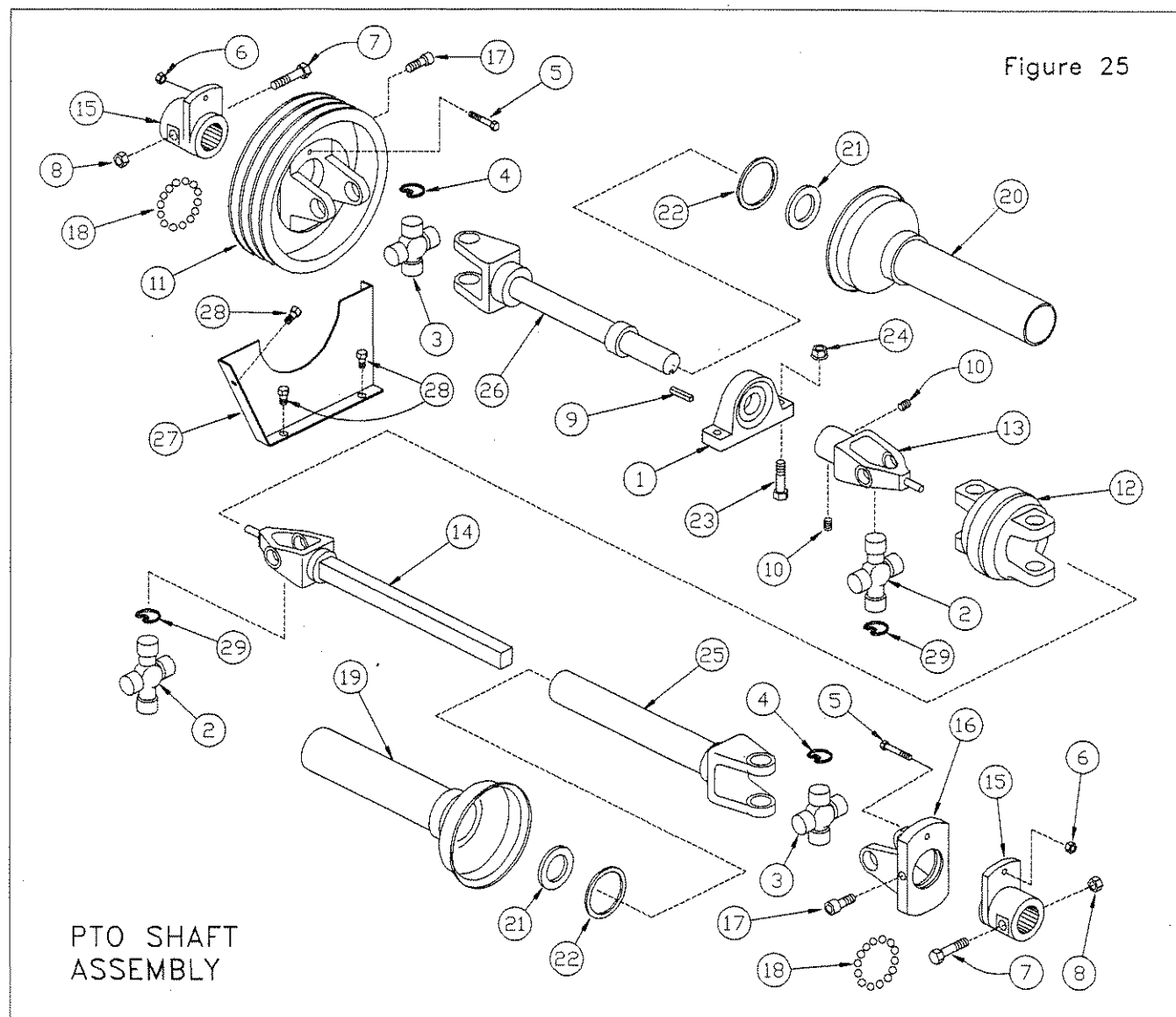


Figure 24

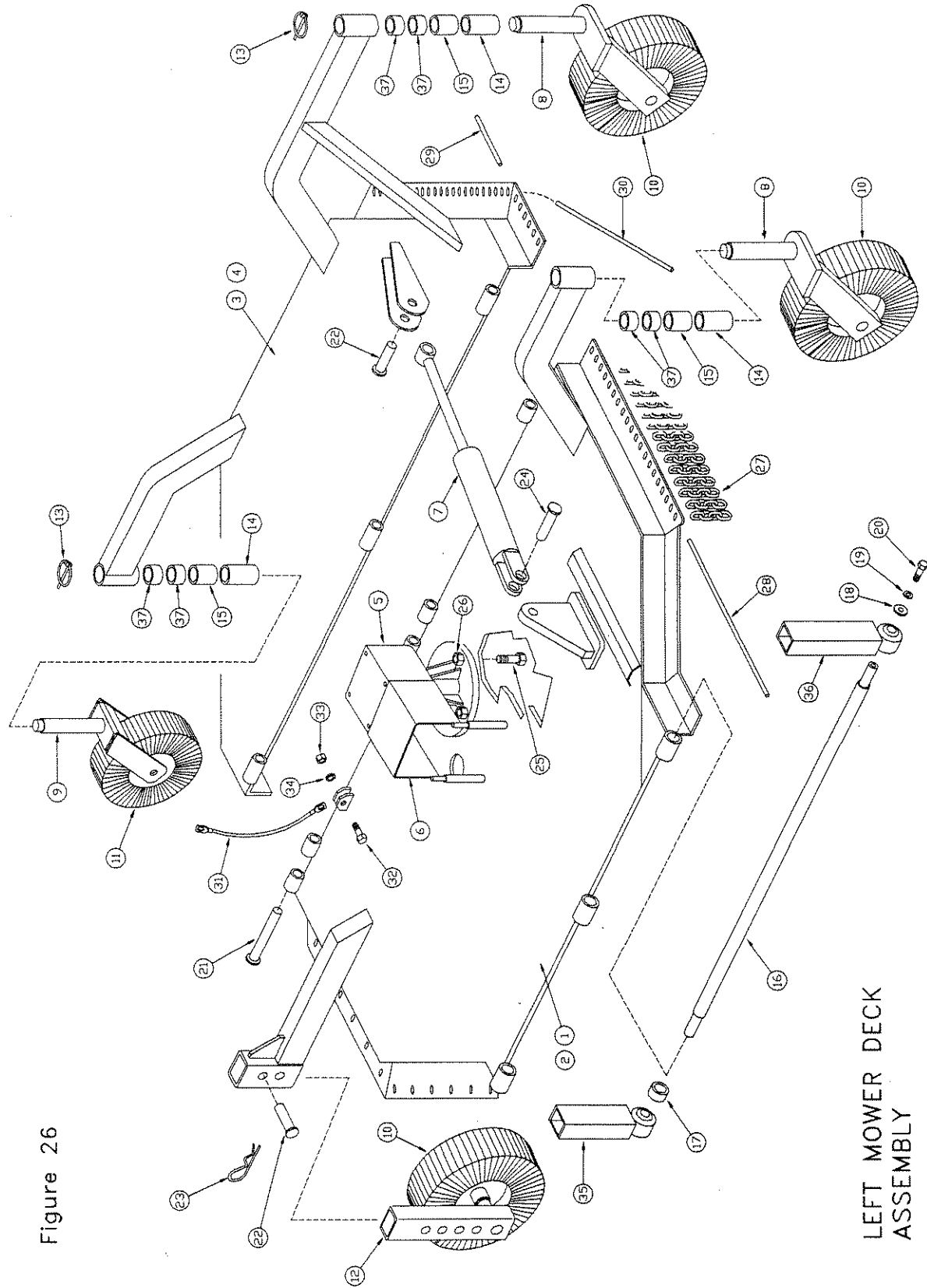


Figure 25



ITEM	PART NO.	DESCRIPTION	ITEM	PART NO.	DESCRIPTION
1	540106	Block bearing	16	540123	Shear device yoke
2	540118	Bearing cross	17	540134	3/8 NC x .375 Skt. head cap screw
3	540119	Bearing cross	18	540129	Ball bearings (31)
4	540120	Bearing clip	19	540130	Left PTO shield
5	500137	5/16 NC x 2 GRD 8 Bolt	20	540131	Right PTO shield
6	410222	5/16 NC Lock nut	21	540132	Nylon bearing
7	540114	1/2 NF x 2.25 GRD 8 Bolt	22	540133	Bearing retainer
8	510396	1/2 NC Lock nut	23	310030	1/2 NC x 2 Bolt
9	410389	5/16 x 1.25 x 1.25 Key	24	210350	1/2 NC Wizflange nut
10	510161	3/8 NC x .50 Set screw	25	540125	Yoke & shaft assy (left)
11	540117	Sheave & yoke assy	26	540124	Yoke & shaft assy (right)
12	540128	Housing	27	510915	Guard
13	540126	CV yoke	28	510196	5/16 NC x .50 Wizflange bolt
14	540127	CV yoke & shaft assy	29	540120	Bearing clip
15	540122	Spline collar			

Figure 26



LEFT MOWER DECK  
ASSEMBLY

# LEFT MOWER DECK ASSEMBLY

ITEM	PART NO.	DESCRIPTION	ITEM	PART NO.	DESCRIPTION
1	510563	Inside deck assy (left)	20	510473	1/2 NC x 1.25 Bolt
2	510564	Inside deck assembly (right)	21	510838	Pin
3	510561	Outside deck assembly (left)	22	510839	Adjustment pin
4	510562	Outside deck assembly (right)	23	210326	Hairpin clip
5	540098	Gearbox <i>1/2 540360</i>	24	510840	Cylinder pin
6	510847	PTO shield	25	510945	3/4 NC x 2.5 Bolt
7	520148	Fold cylinder	26	510944	3/4 NC Lock nut
8	510551	Front castor fork assembly	27	510834	Guard chain (47 required)
9	510552	Rear castor fork assembly	28	510576	Inside chain guard
10	500159	Large castor wheel (see page #38)	29	510577	Middle chain rod
11	500160	Small castor wheel (see page #38)	30	510575	Outside chain rod
12	511071	Rear castor slide tube	31	500170	Lift cable
13	210006	Lynch pin	32	510351	3/8 NC x 1.5 Bolt
14	510843	Spacer, 3"	33	510272	3/8 NC Nut
15	510842	Spacer, 2"	34	510271	3/8 Lock
16	510831	Center pivot shaft	35	510970	Rear slide tube assembly
17	511065	Spacer / center pivot shaft	36	510971	Front slide tube assembly
18	500128	1/2 Flat washer x 3/16	37	510841	Spacer, 1"
19	510219	1/2 Lock washer			

Figure 27

# REAR BLADE GUARDS

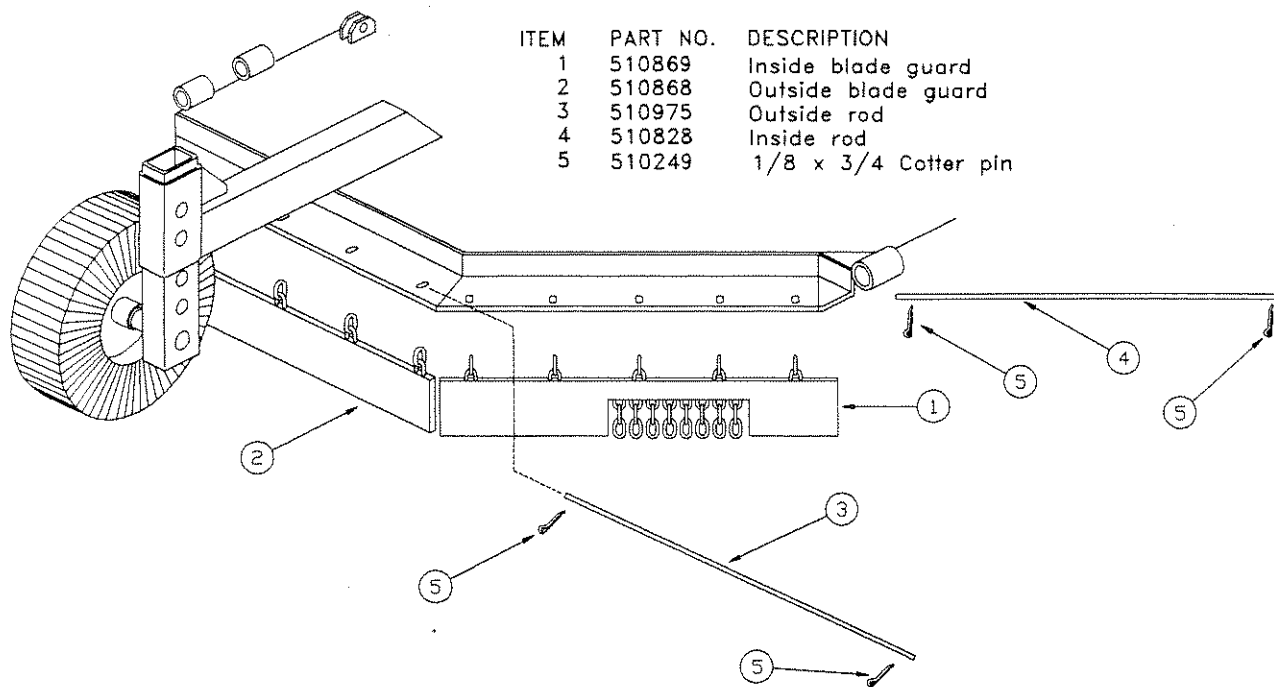


Figure 28

## BLADE ASSEMBLY

ITEM	PART NO.	DESCRIPTION
1	510455	Mower blade - left
	510456	Mower blade - right
2	510617	Shoulder bolt
3	510903	1 1/8 NF Lock nut
4	510687	Blade plate assy
5	500169	Castle jam nut
6	500168	Custom flat washer
7	500167	1/4 x 2.5 Cotter pin

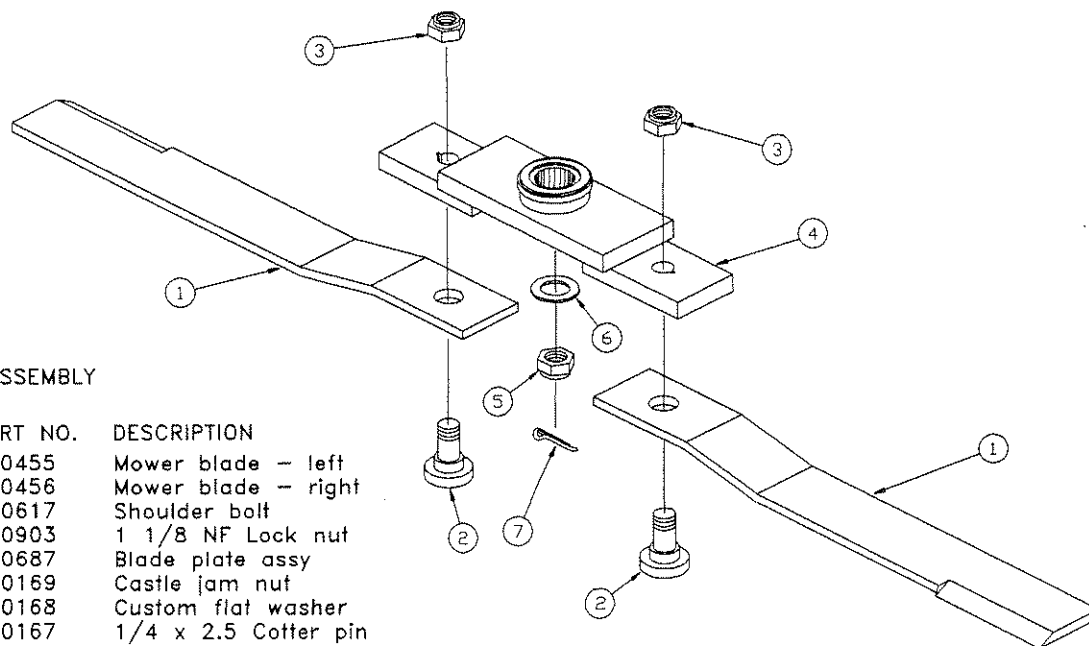
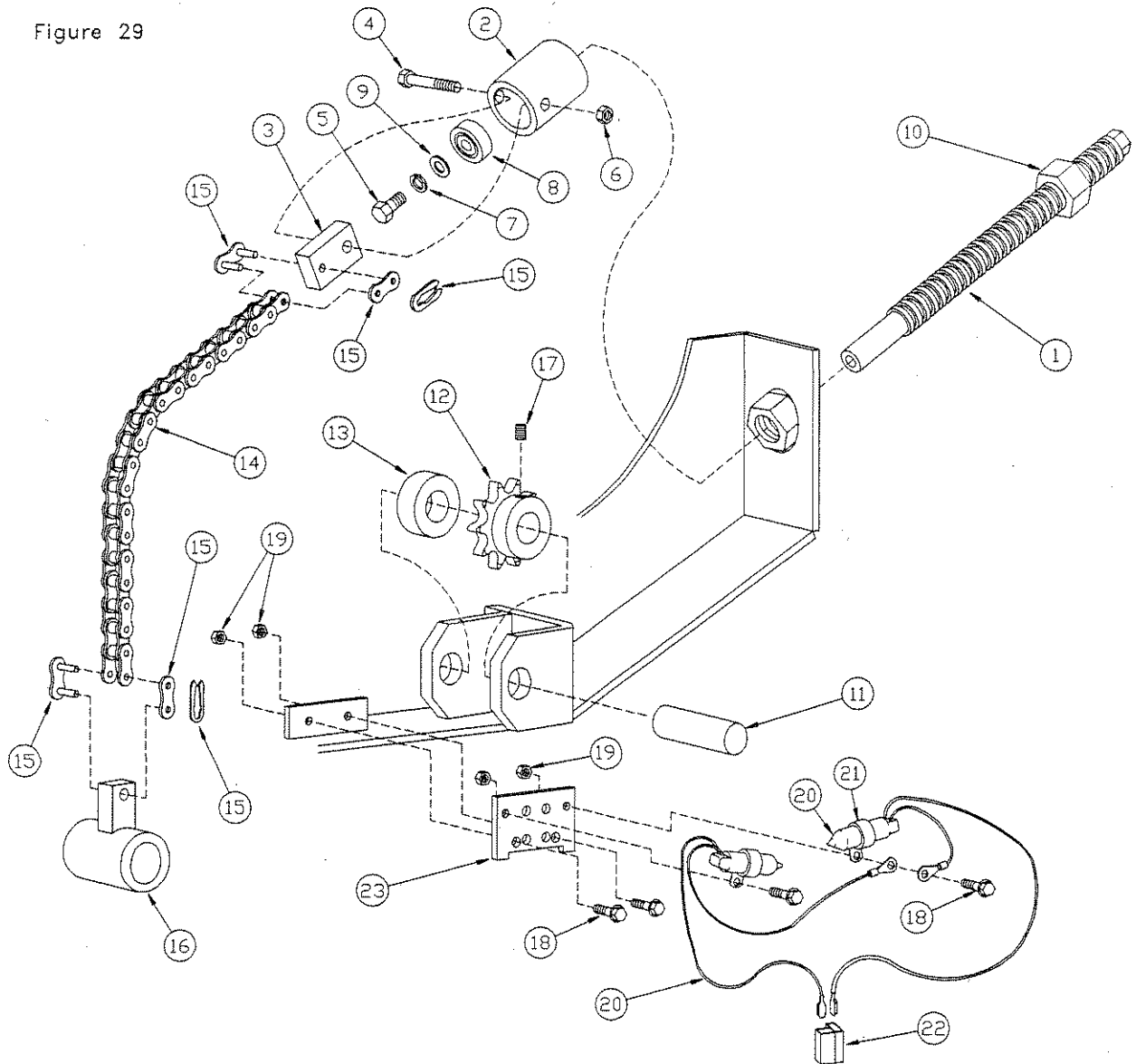


Figure 29



DECK HEIGHT ADJUSTMENT  
AND LEVELING SWITCH ASSEMBLY

ITEM	PART NO.	DESCRIPTION	ITEM	PART NO.	DESCRIPTION
1	511075	Acme screw assy	13	511018	Spacer
2	511016	Sleeve assy	14	511020	Chain
3	510745	Chain lug	15	410442	Connecting link
4	410216	5/16 NC x 2.5 Bolt	16	511089	Bushing assy
5	510257	3/8 NC x .75 Bolt	17	500129	5/16 NC x .312 Set screw
6	410222	5/16 NC Lock nut	18	540084	1/4 NC x .75 Wiz bolt
7	510271	3/8 Lock washer	19	510224	1/4 NC nut
8	510397	Thrust bearing	20	530082	Mercury switch (2)
9	510365	3/8 Flat washer	21	200019	Clamp
10	510253	1 Acme nut	22	530083	Connector
11	511017	Sprocket shaft	23	511048	Mount bracket
12	410375	Sprocket	24	530085	Mercury switch assy
					(Items 18-23)

# STABILIZER ARM

ITEM	PART NO.	DESCRIPTION
1	510622	Stab. arm, left
2	510623	Stab. arm, right (not shown)
3	510624	Swing arm, left
4	510625	Swing arm, right (not shown)
5	510693	Spindle
6	510627	Parallel linkage arm
7	511027	Wheel weight
8	520146	Outrigger cylinder
9	510840	Pin, outrig. cyl.
10	511028	Pin, parallel link.
11	510839	Pin, outrig. cyl.
12	510917	Pin, stab. arm
13	511047	Wheel assy.
14	510196	Bolt, 5/16NC x 1/2 w/iz
15	510626	Parallel linkage rod
16	510213	Bolt, 1/2NC x 3
17	510219	Lock washer, 1/2
18	510225	Nut, 1/2
19	500138	Seal
20	500139	Inner bearing
21	500140	Inner race
22	500141	Hub
23	500142	Lug bolt
24	500143	Outer race
25	500144	Outer bearing
26	510461	Flat washer
27	510339	Castle nut
28	710522	Bolt, 7/16NC x 7
29	510574	Bushing, oil lite
30	510787	Bar tire
31	510463	Cotter pin
32	500145	Cap
	510175	Cotter pin
	510463	Cotter pin

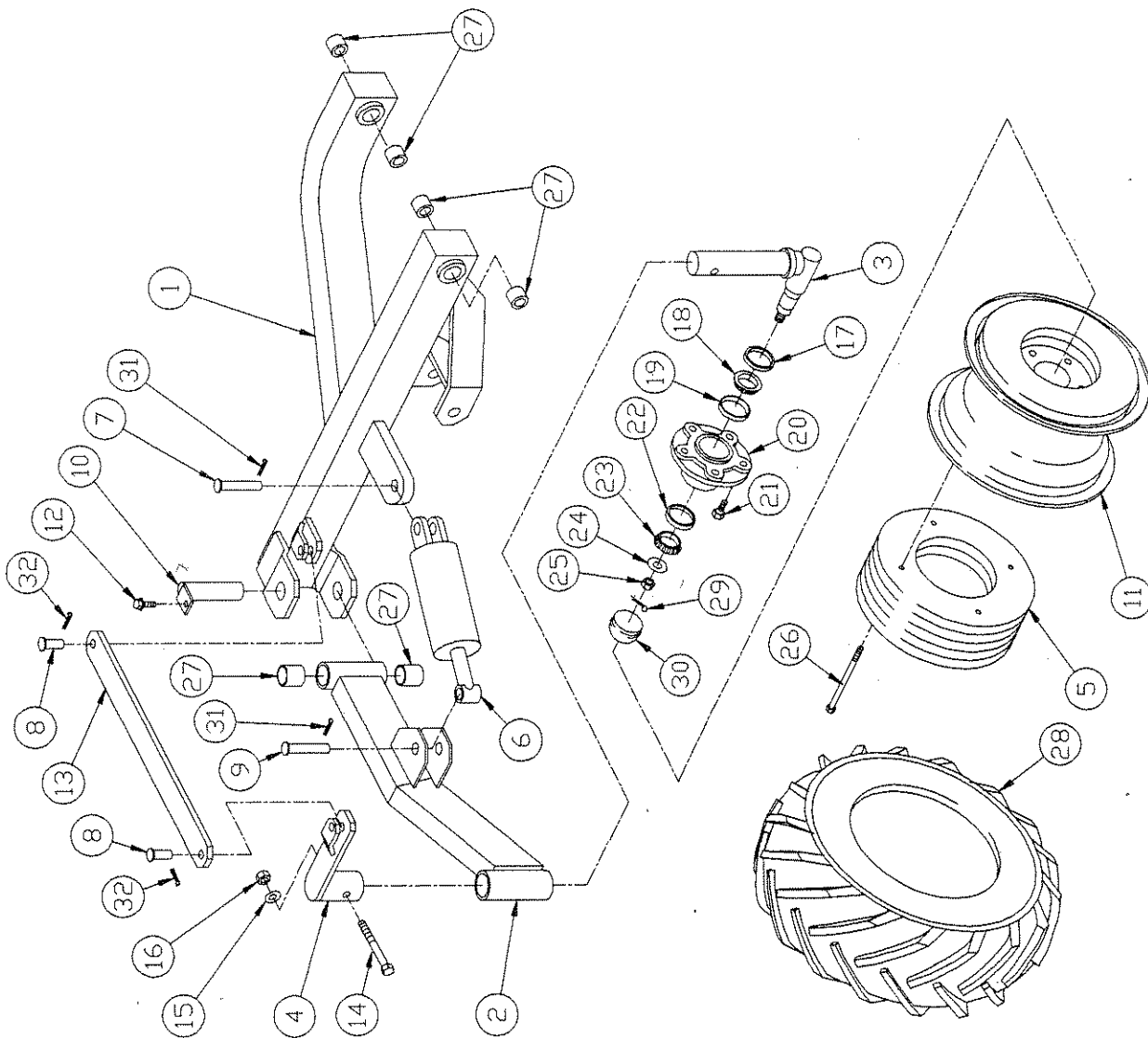
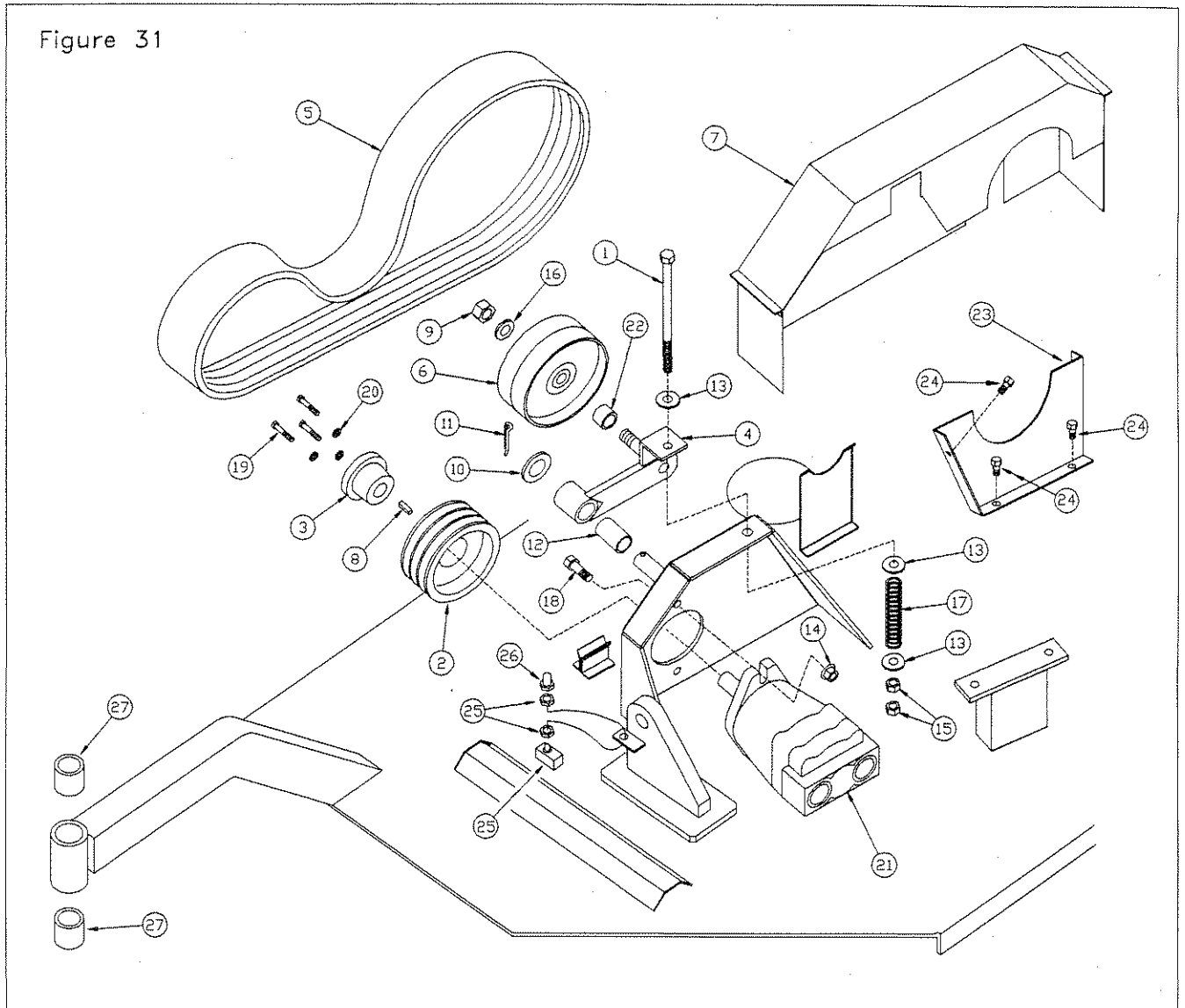


Figure 30

Figure 31



### MOWER DECK DRIVE ASSEMBLY

ITEM	PART NO.	DESCRIPTION	ITEM	PART NO.	DESCRIPTION
1	710498	1/2 NC X 9.50 Bolt	15	510225	1/2 NC Nut
2	540103	Pulley	16	510370	3/4 Flat washer
3	540104	QD Bushing	17	540116	Spring
4	511076	Idler bracket	18	410273	1/2 NC x 2.5 Bolt
5	540105	Power band belt	19	500164	1/4 NC x 1.875 Bolt
6	540100	Idler pulley	20	510221	1/4 Lock washer
7	510914	Belt shield	21	520159	Deck drive motor
8	410389	5/16 x 1.25 x 1.25 Key	22	510912	Spacer
9	510944	3/4 NC Lock nut	23	510915	PTO Guard
10	510173	1 Flat washer	24	510196	5/16 NC x .50 Wiz bolt
11	510175	3/16 x 2 Cotter pin	25	530059	Safety switch (both decks)
12	510821	Brass bushing	26	530077	Switch boot
13	410265	1/2 Flat washer	27	510574	Brass bushing
14	210350	1/2 NC Wiz nut			

# WHEEL MOUNT ASSEMBLY

ITEM	PART NO.	DESCRIPTION
1	510946	Caliper bracket
2	510987	Rotor
3	510991	Bolt, shoulder
4	511022	Bushing - <i>from 5102204</i>
5	510710	Cover
6	520116	Adapter
7	520158	Wheel motor
8	511087	Lug nut
9	520347	Caliper
10	500106	Brake pad
11	710523	Bolt, 7/16NC x 2
12	510992	Bolt, 5/16NC x 1 w/iz
13	550045	Bolt, 1/4NC x 1-1/2
14	510221	Lock washer, 1/4
15	510260	Lock washer, 7/16
16	540139	Torque hub
17	310202	Bolt, 5/8NC x 2
18	310030	Bolt, 1/2NC x 2
19	500152	Wheel
20	500126	Tire
21	510219	Lock washer, 1/2
22	410206	Lock washer, 5/8

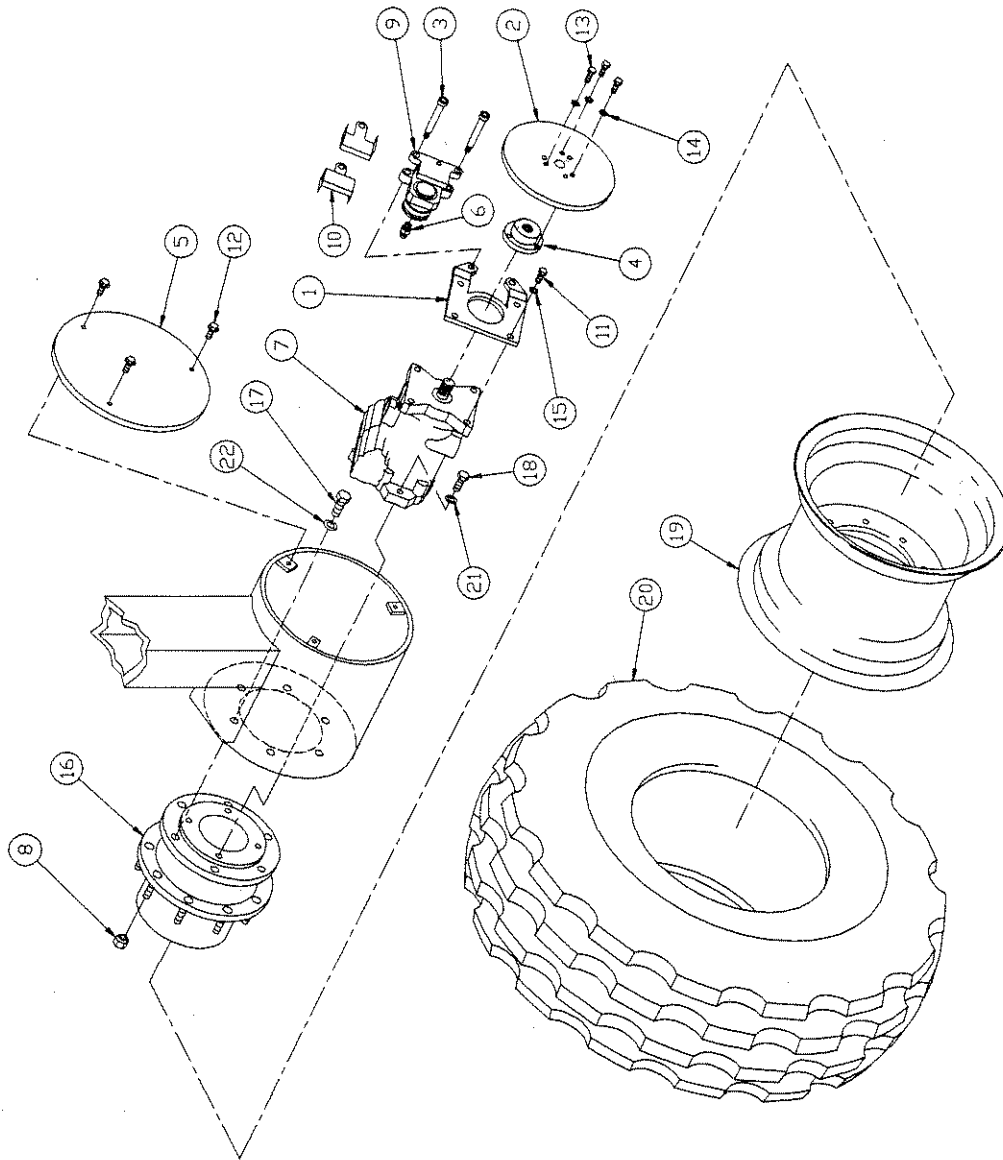


Figure 32



Figure 33

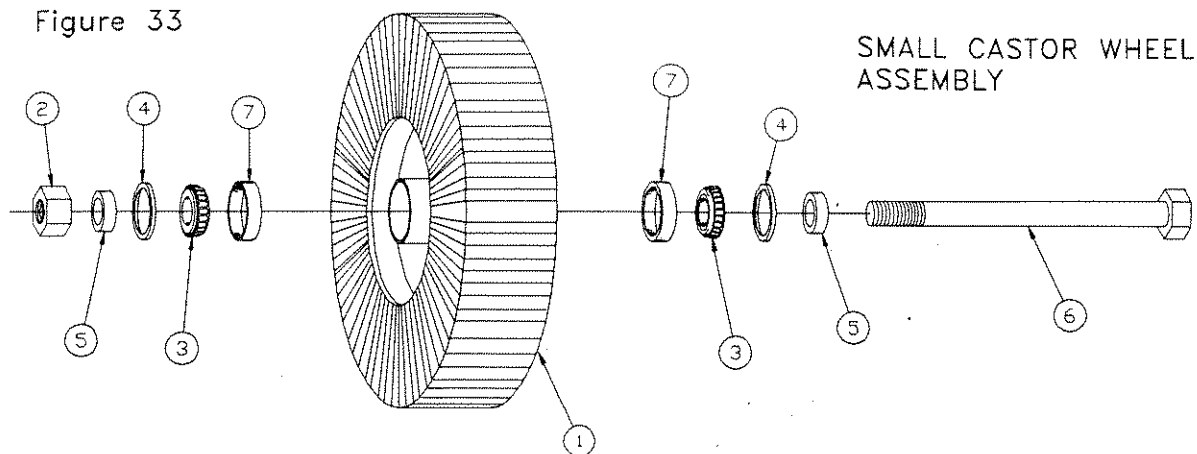
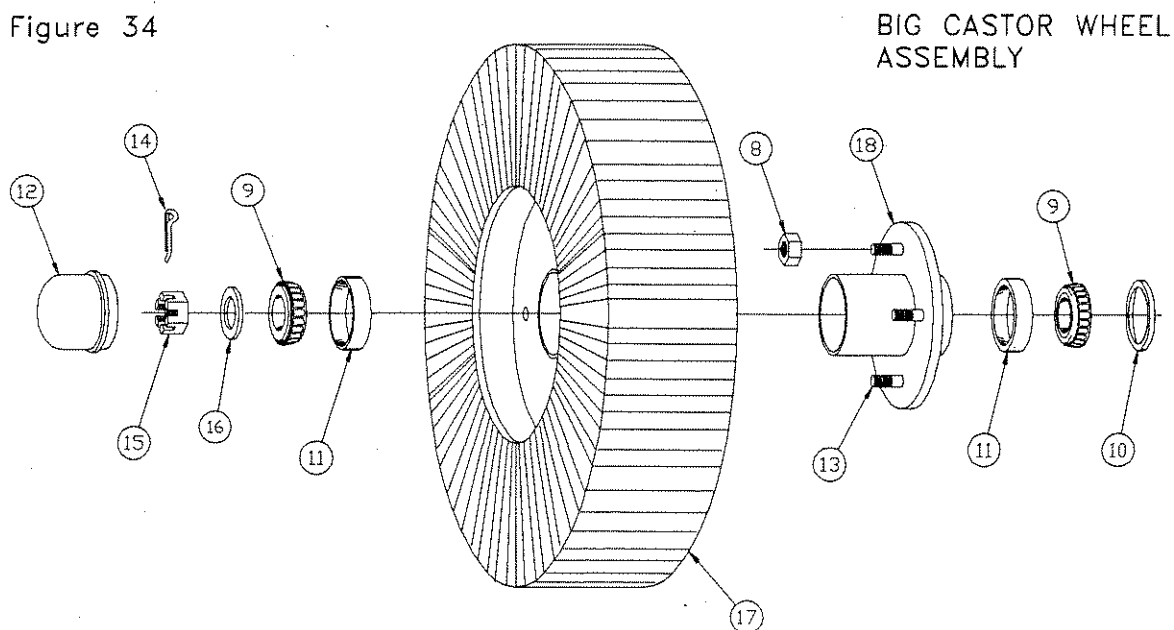


Figure 34



ITEM	PART NO.	DESCRIPTION	ITEM	PART NO.	DESCRIPTION
1	500133	Wheel & tire assy	10	510467	Seal
2	510944	3/4 NC Lock nut	11	510465	Race
3	500157	Bearing	12	510469	Dust cap
4	500158	Seal	13	511074	Stud
5	510967	Spacer	14	510176	1/8 x 1 Cotter pin
6	510968	3/4 NC x 6.75 Bolt	15	510339	3/4 NC Castle nut
7	500178	Race	16	510338	3/4 Flat washer
8	510464	Lug nut	17	500134	Wheel & tire assy
9	510466	Bearing	18	511073	Hub assy (Includes lug bolts and races)

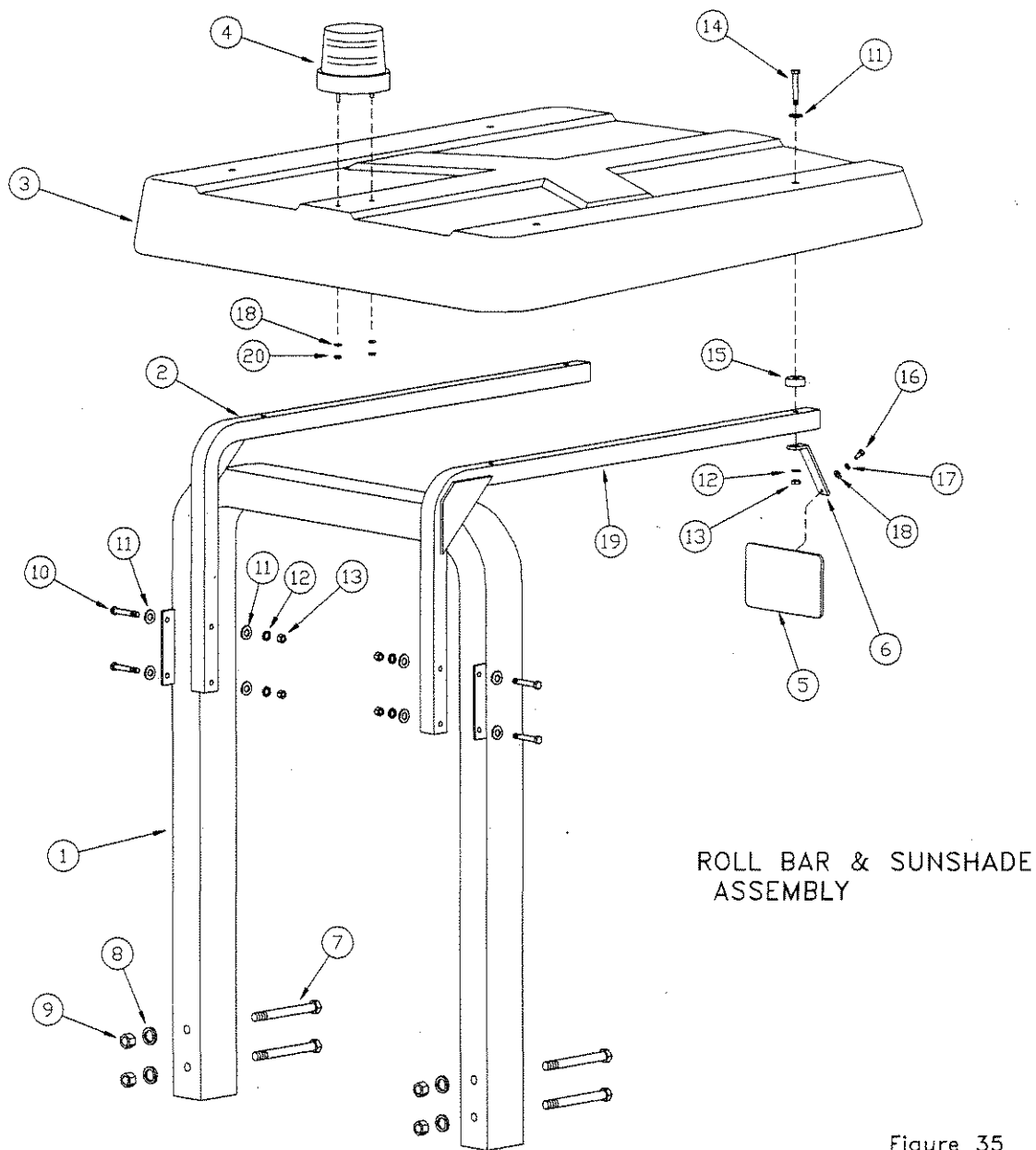
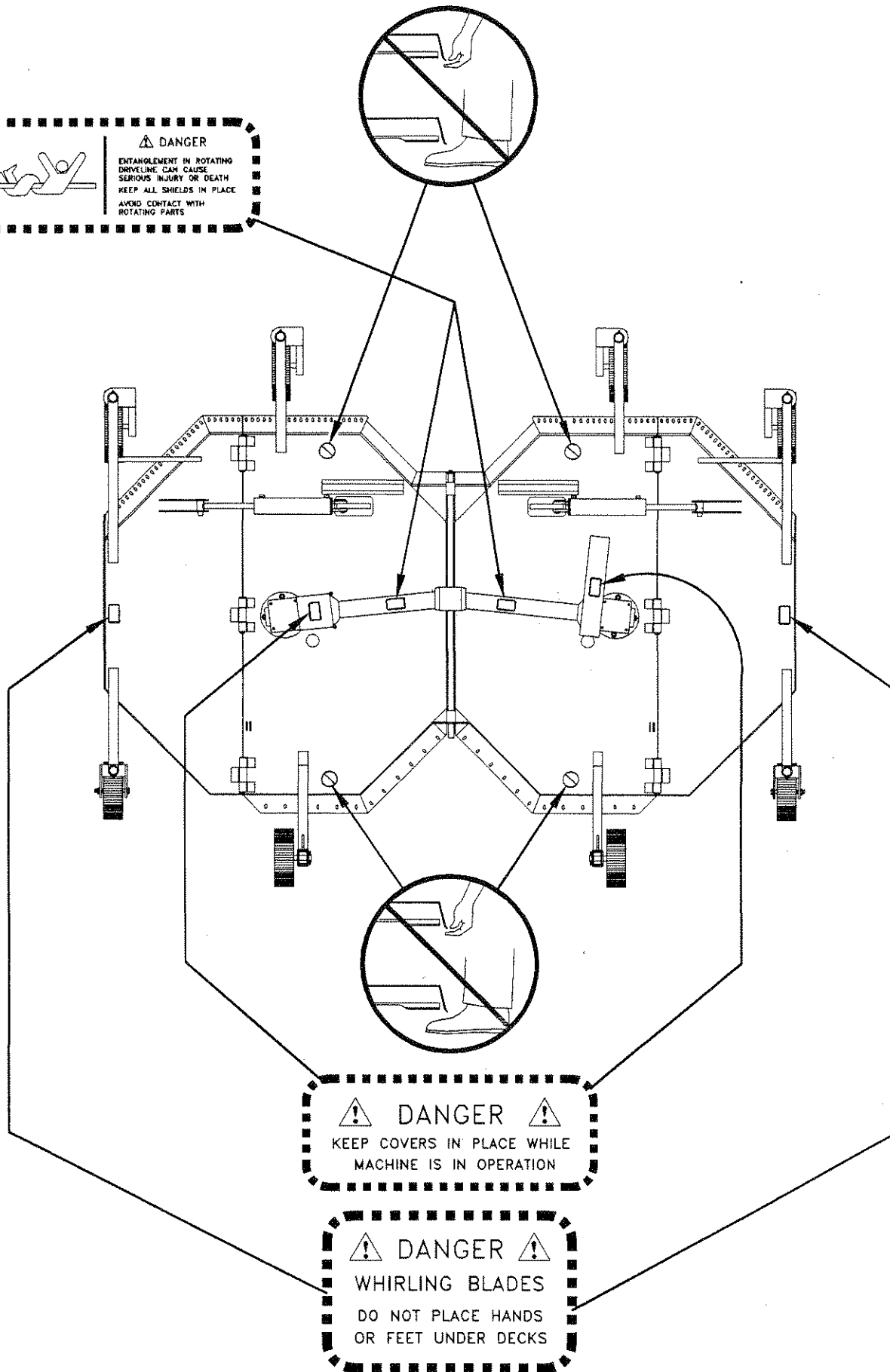
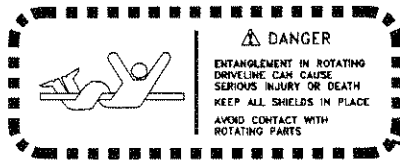


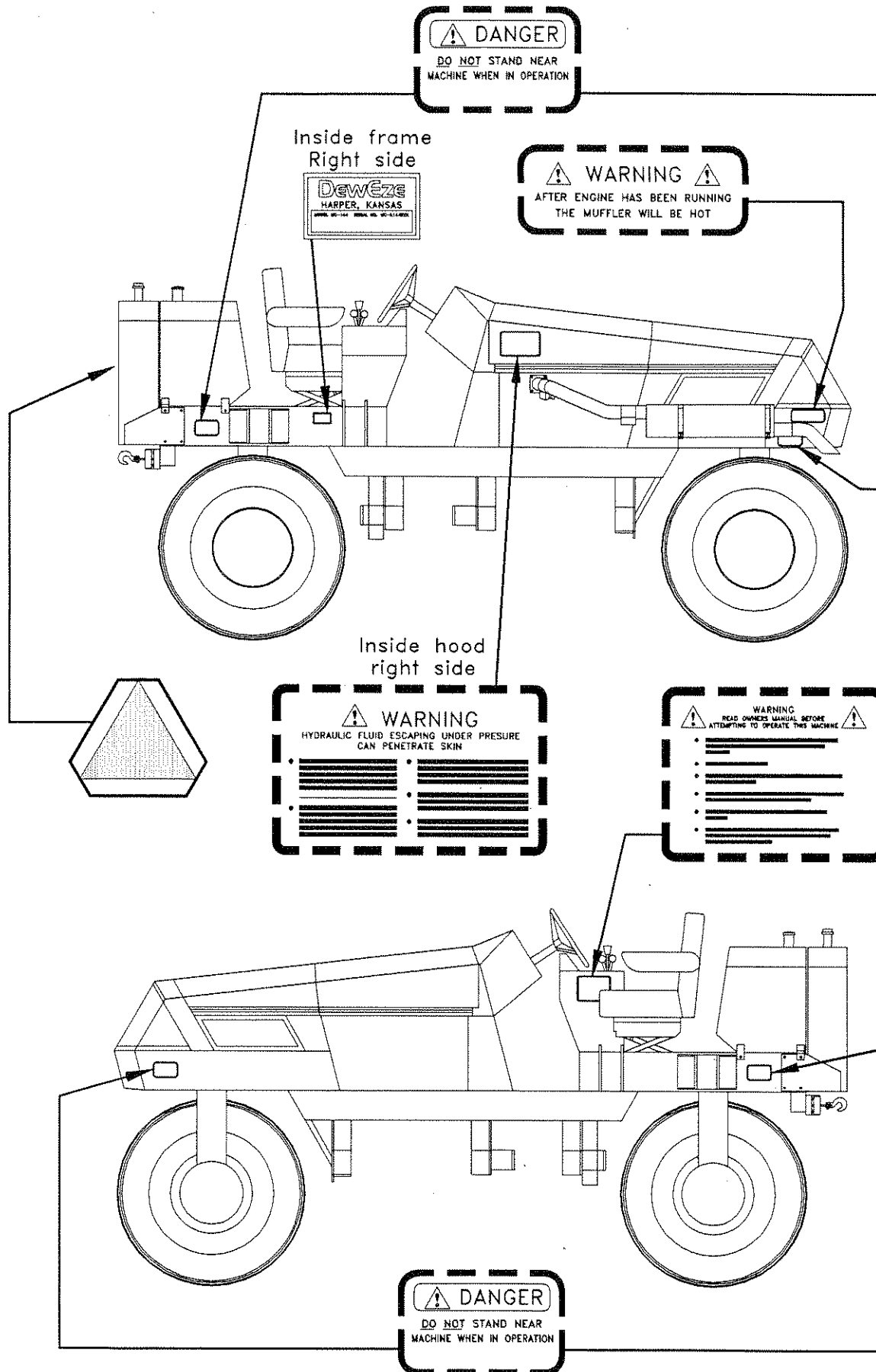
Figure 35

ITEM	PART NO.	DESCRIPTION	ITEM	PART NO.	DESCRIPTION
1	511029	Roll bar assy	12	510271	3/8 Lock washer
2	511093	Shade mount (left)	13	510272	3/8 NC Nut
3	500090	Sunshade	14	410217	3/8 NC x 3.5 Bolt
4	530045	Strobe	15	500197	Rubber grommet
5	500089	Rear view mirror	16	500198	1/4 NF x .625 Bolt
6	510961	Hanger	17	510221	1/4 Lock washer
7	500201	5/8 NC x 6.0 Bolt	18	510322	1/4 Flat washer
8	410206	5/8 Lockwasher	19	511095	Shade mount (right)
9	410205	5/8 NC Nut	20	210336	10-24 NC Nut
10	510366	3/8 NC x 2.5 Bolt			
11	510365	3/8 Flat washer			

# TROUBLE SHOOTING

SYMPTOMS	POSSIBLE CAUSE	REMEDY
1. Engine will not turn over.	Drive lever not in neutral. Blade drive not in neutral.	Put traction level in neutral.
2. Drive wheels won't turn.	Driver not on seat. Park brake ON. Fuse blown.	Driver must be sitting on seat. Park brake must be OFF. Check fuses in fuse panel.
3. Blade drive won't engage.	Driver not on seat. Park brakes ON. Outer decks not down. Malfunction of safety switches.	Driver must be sitting on seat. Turn park brakes OFF. Outer decks must be COMPLETELY DOWN. Check safety switches for proper function; seat safety switch is normally OPEN; deck safety switches are normally CLOSED.
4. Auto level will not work.	Driver not on seat. Park brake ON. Fuse blown. Steering held against stop, either complete left, or complete right turn.	Driver must be sitting on seat. Park brake must be OFF. Check fuses in fuse panel. Release turning pressure against steering wheel.
5. Parking brakes not holding.	Worn brake pads.	Adjust or replace brake pads.
6. Parking brakes will not release.	Low oil pressure.	Check hydraulic system. Brakes are released by hydraulic oil pressure.
7. Posi-trac will not work.	Fuse Blown. Bad switch.	Check fuses in fuse panel. Check switch.
8. Decks won't raise for service mode.	Valve not closed.	Left valve must be closed to raise right deck. Right valve must be closed to raise right deck.
9. Blades stopping intermittently while mowing.	Seat safety switch not contacting. Outer deck safety switches not contacting.	Driver must remain seated. Make sure outer decks are completely down.





# INDEX

Accumulator, 21  
 Acme screw, 10, 34  
 Air cleaner, 5, 26  
 Air intake assembly, 26  
 Ammeter, 3, 15  
 Antifreeze, 5  
 Auto level, 3  
 Battery, 2, 6, 15, 27  
 Bearing, steering spindle, 29  
 Bearing, Wheel, 35, 38  
 Belt, 2, 36  
 Belt, replacing, 11  
 Belt Pulley, 11, 30, 36  
 Belt shield, 36  
 Blade assembly, 33  
 Blades, 33  
     control, 4  
     guards, 33  
     spacing, 11  
 Brakes, 2, 3, 19, 37  
 Brake service, 12  
 Cable, deck lift, 31  
 Caster wheels, 7, 31, 38  
 Chain, guard, 31  
 Chain, height adjusting, 34  
 Charge pump, 2, 21  
 Check valve, 24  
 Control block, 18, 19  
 Controls  
     Blade, 3, 4  
     Brake, 3  
     Throttle, 3, 4  
     Transmission, 3, 4  
     Winch, 3, 4  
 Cooling assembly, 27  
 Cutting height, 9  
 Cylinders, hydraulic, 21  
     Deck Fold, 31  
     Leveling, 25  
     Outrigger, 35  
     Steering, 29  
 Deck, 31  
 Deck drive assembly, 36  
 Deck drive motor, 36  
 Deck fold cylinder, 31  
 Deck folding, 4  
 Deck height adjustment, 34  
 Deck raise, 4  
 Drive wheel, 37  
 Drive wheel motor, 37  
 Drive wheel motor access, 12  
 Electric schematic, 15, 16  
 Engine, 2  
 Exhaust assembly, 28  
 Fan shroud, 27  
 Filters  
     Air, 2, 6, 26  
     Fuel, 2, 6  
     Oil, 2, 6  
 Fuel gauge, 3, 15  
 Fuel level sender, 25  
 Fuel tank, 25  
 Fuel type, 2, 5  
 Gearbox, deck, 13, 31  
 Gauges, 3  
     Ammeter, 3  
     Fuel, 3  
     Oil pressure, 3  
     Temperature, 3  
 Headlight, 16, 26  
 Heat exchanger, 24, 27  
 Height adjustment, 9, 34  
 Hi/Lo range, 4  
 Hot oil shuttle, 23  
 Hydraulic system, 13, 19, 21  
 Hydraulic  
     Cylinders, 21  
     Filters, 13, 19, 21  
     Hoses, 19, 21, 23, 24  
     Oil, 2, 13  
     Schematic, 17  
 Idler pulley, 36  
 Ignition switch, 15  
 Jack point, 13  
 Leveling adjustment, 10  
 Leveling cylinder, 21, 25  
 Lubrication, 7, 8  
 Mercury switch, 10 16, 34  
 Mirror, 39  
 Motor, deck drive, 2, 23, 36  
 Motor, hydraulic, 2, 23  
 Muffler, 28  
 Oil pressure gauge, 3, 15  
 Oil reservoir, 19, 21, 25  
 Oil, engine, 2, 5  
 Oil, hydraulic, 2, 13  
 Outrigger cylinder, 35  
 Posi-Trac, 4, 18, 19  
 Pre-cleaner, 6, 26  
 Propulsion pump, 19, 23  
 PTO drive collar, 11, 30  
 PTO shaft, 30

## INDEX

PTO shield, 30  
Radiator, 27  
Rear tractor assembly, 25  
Relay switches, 16  
Roll bar, 39  
Safety Decals, 41, 42  
Safety Section, 1  
Safety switches, 2, 15  
Seat, 25  
Seat safety switch, 16  
Serial number plate, 42  
Shaft, center pivot, 32  
Shear bolts, 11  
Spacers, height adjustment, 7  
Spindle, stabilizer wheel, 35  
Spindle, steering, 29  
Stabilizer arm, 7 25, 35  
Stabilizer wheel, 7, 35  
Steering, 2  
Steering assembly, 29  
Steering cylinder, 21, 29  
Steering lubrication, 8  
Steering spindle, 29  
Strobe light, 16, 39  
Sunshade, 39  
Switches  
    Blade, 15  
    Deck, 16  
    Ignition, 3  
    Light, 3  
    Mercury, 16, 34  
    Relay, 16  
    Safety, 2, 15, 16, 25, 32, 36  
    Seat safety, 16, 25  
  
Tachometer, 3, 15  
Temperature gauge, 3, 15  
Throttle, 4  
Tilt, 4  
Tires  
    Caster, 2, 31, 38  
    Drive, 2, 13, 37  
    Jack point, 13  
    Pressure, 13  
    Stabilizer, 2, 13, 35  
Torque hub, 2, 13, 14  
Towing, 14  
Transmission, 4  
Trouble shooting, 40  
U-joints, 8  
  
Valves  
    Blade, 18  
    Brake, 18  
    Check, 24  
    Drive, 18  
    Hi/Lo, 18  
    Leveling, 21  
    Posi-Trac, 18, 19  
Warranty, 43  
Wheel bearings, 35, 38  
Wheel motors, 2, 19, 37  
Wheel weight, 35  
Wheels  
    Castor, 31, 38  
    Drive, 37  
    Stabilizer, 35  
Winch, 4, 15, 25

DEWEZE MANUFACTURING, INC.  
WARRANTY POLICY

Statement of Warranty

DewEze Mfg., Inc. warrants to the original purchaser of a DewEze MC144 Mower from an authorized dealer or representative, that such equipment to be free from manufacturing defects in normal service for a period of ONE YEAR or 500 HOURS, WHICHEVER COMES FIRST, commencing with delivery to the original user.

The obligation of DewEze Mfg., Inc. under this warranty is expressly limited, at our option, to replacement or repair at DewEze Mfg., Inc., Harper Kansas, 67058, or at a service facility designated by DewEze Mfg., Inc., of such parts or part as inspection shall disclose to have been defective. This warranty does not apply to defects caused by damage or unreasonable use (including failure to provide reasonable and necessary maintenance), or to tires, belts, blades, lights, or other normal maintenance items while in the possession of the consumer.

DewEze Mfg., Inc. makes no warranty with respect to trade accessories. They are subject to the warranties of their respective manufacturers.

The Cummins diesel engine carries a limited 12 month warranty by the Cummins Engine Co., Inc. Refer to the Cummins engine OPERATION AND MAINTENANCE MANUAL for information on the engine warranty, which must be serviced by an authorized Cummins engine service facility.

ANY IMPLIED OR STATUTORY WARRANTIES, INCLUDING ANY WARRANTY OF MERCHANTABILITY OR FITNESS FOR A PARTICULAR PURPOSE, ARE EXPRESSLY LIMITED TO THE DURATION OF THIS WRITTEN WARRANTY. DewEze Mfg., Inc. makes no other express warranty, nor is anyone authorized to make any in behalf of DewEze Mfg., Inc.

For information on warranty procedures please write or call the factory at:

DEWEZE MANUFACTURING, INC.  
RT. 2, BOX 78  
HARPER, KANSAS 67058

TOLL FREE 800-835-1042  
IN KANSAS 316-896-7381  
FAX 316-896-7129