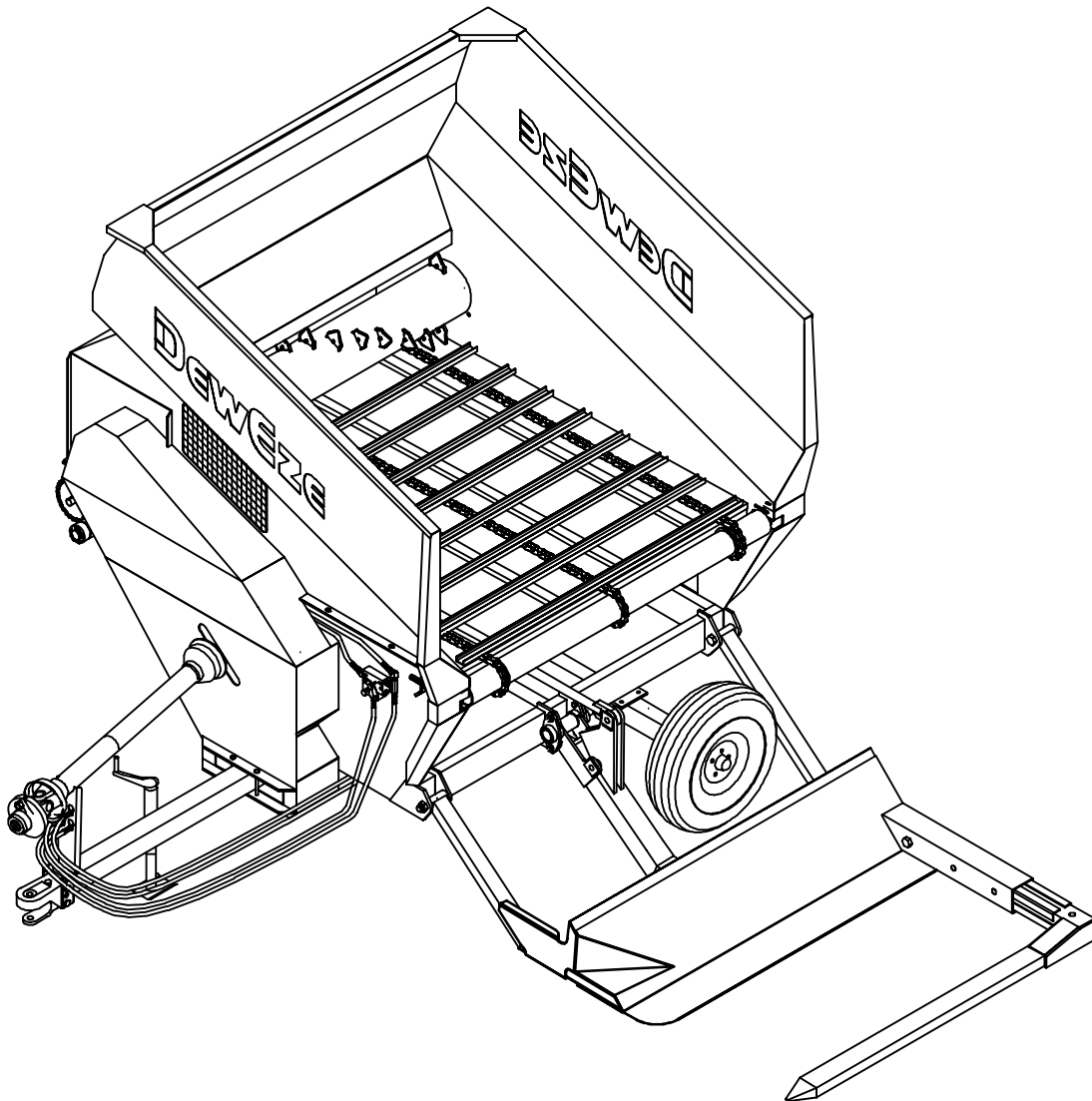


OPERATION & SERVICE MANUAL

ROTO-SLICER PROCESSOR



DEWEZE MANUFACTURING

WARRANTY POLICY

Statement of Warranty

DewEze Manufacturing warrants to each purchaser of DewEze new equipment from an authorized dealer or representative that such equipment to be free from manufacturing defects in normal service for a period of one (1) year commencing with delivery to the original user.

The obligation of DewEze Manufacturing under this warranty is expressly limited, at our option, to replacement or repair at DewEze Manufacturing, 151 E. Hwy. 160, Harper Kansas 67058, or at a service facility designated by DewEze Manufacturing of such parts or part as inspection shall disclose to have been defective. This warranty does not apply to defects caused by damage or unreasonable use (including failure to provide reasonable and necessary maintenance) while in the possession of the consumer.

DewEze Manufacturing shall not be liable for consequential damages of any kind, including but not limited to, consequential labor costs or transportation charges in connection with replacement or repair of defective equipment.

DewEze Manufacturing makes no warranty with respect to trace accessories. They are subject to the warranties of their manufactures.

Any implied or statutory warranties, including any warranty of merchantability or fitness for a particular purpose, are expressly limited to the duration of this written warranty. DewEze Manufacturing makes no other express warranty, nor is anyone authorized to make in behalf of DewEze Manufacturing.

For information on warranty procedures please contact your nearest dealer.

TABLE OF CONTENTS

Warranty	Inside Front Cover
Specifications	2
Safety Precautions	3-4
Decal Detail	6
Operation Instructions	7-8
Service and Maintenance	
Slat Feeder Chain	10
Drive Belts	10
Lubrication	11
Installation of Options & Set-up	
Axle Alignment	13
Safety Bar	13
Fork Installation	14
Rotor Installation	14
Parts Listing	
Trailer Components	16
Rotor Components	17
Table Shield Components	18-19
Fork Components	PRIOR TO S/N RS02A21.....20
Pulley Drive Components	21
Standard Hydraulic Components	PRIOR TO S/N RS02A21.....22-23
Hydraulic Assembly	AFTER S/N RS02A21.....24-25
Fork Assembly	AFTER S/N RS02A21.....26
Fork Extension Option	27

ROTO-SLICER PROCESSOR SPECIFICATIONS

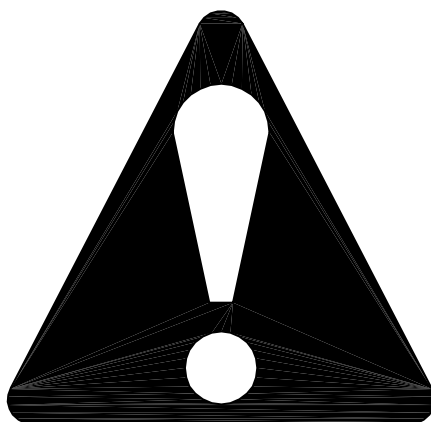
Weight	3,600lbs.
Width	8'5"
Height	9'7"
Length	7'9"
Wheels	15"—6 Hole
Tire Size	11L x 15 8 Ply
Drive	540 RPM PTO, One Piece Drive Line
Power	40—80 HP
Capacity	4—8 minutes/bale (*variable depending on wet or dry)
Rotor Size	10" Diameter x 72" Long
Hydraulic Requirements	2000psi @ 9gpm
Feed Delivery	
Bunk Feeder Model	72" Wide Side Discharge Opening
Rotor Knife	3/16" Thick, Double Sided Hardsurfaced Sections (Reversible for longer life)
Number of Knives Required	30 Sections
Optional Equipment	Fork Extension
.....	(1000RPMCV PTO & 10.5 Rotor Pulley) Baleage Option

Rotor Speeds (depending on pulley configuration)

Driver	Driven	PTO rpm	Driven rpm
20.5	- 8.5	540	1,302
20.5	- 8.5	475	1,146
20.5	- 10.5	540	1,054
20.5	- 10.5	600	1,171
20.5	- 10.5	1000	1,952
20.5	- 11.5	1000	1,783

SAFETY

TAKE NOTE! THIS SAFETY ALERT SYMBOL FOUND THROUGHOUT THIS MANUAL IS USED TO CALL YOUR ATTENTION TO INSTRUCTIONS INVOLVING YOUR PERSONAL SAFETY AND THE SAFETY OF OTHERS. FAILURE TO FOLLOW THESE INSTRUCTIONS CAN RESULT IN INJURY OR DEATH



THIS SYMBOL MEANS

- ATTENTION!
- BECOME ALERT!
- YOUR SAFETY IS INVOLVED!

SIGNAL WORDS

Note the use of the signal words DANGER, WARNING and CAUTION with the safety messages. The appropriate signal word for each has been selected using the following guidelines:

WARNING: Indicates a potentially hazardous situation that, if not avoided, could result in death or serious injury, and includes hazards that are exposed when guards are removed. It may also be used to alert against unsafe practices.

DANGER: Indicates an imminently hazardous situation that, if not avoided, will result in death or serious injury. This signal word is to be limited to the most extreme situations typically for machine components which, for functional purposes, cannot be guarded.

CAUTION: Indicates an potentially hazardous situation that, if not avoided, may result in minor or moderate injury. It may also be used to alert against unsafe practices.

If you have questions not answered in this manual or require additional copies of this copy of the manual is damaged, please contact your dealer or DewEze Manufacturing, 151 E Hwy 160, Harper, Kansas, 67058. (620)-896-7381, FAX (620)-896-7129.

SAFETY PRECAUTIONS

Read this manual carefully. It will instruct you on how to operate and service your machine safely and correctly. Failure to do so could result in personal injury and/or equipment damage.

1. Operator should read and understand this manual before operating Roto-Slicer Processor.
2. Keep all guards and shields in place.
3. Keep all persons clear of area while machine is in operation.
4. Do not walk under fork.
5. Do not make adjustments while machine is in operation.
6. Disconnect PTO and hydraulics while servicing machine.
7. Fasten the safety chain on main frame to fork before transporting.
8. Operate at slow to moderate speeds, until familiar with controls and operation of machine.
9. Do not check for hydraulic leaks with bare hands.

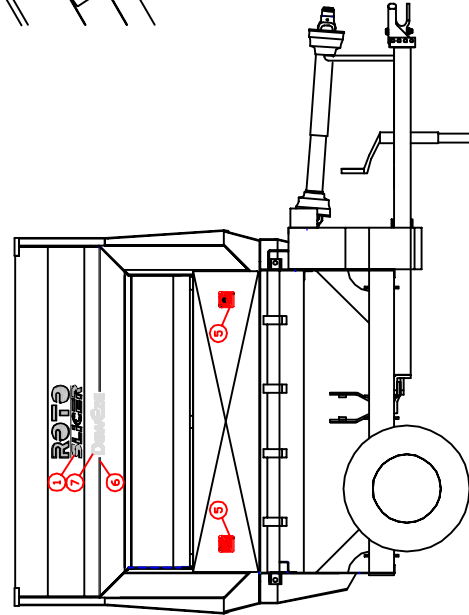
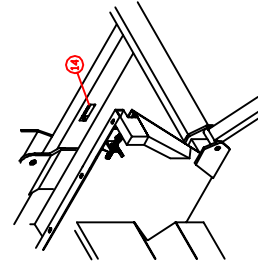
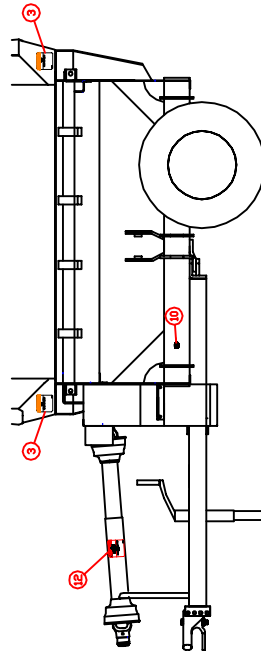
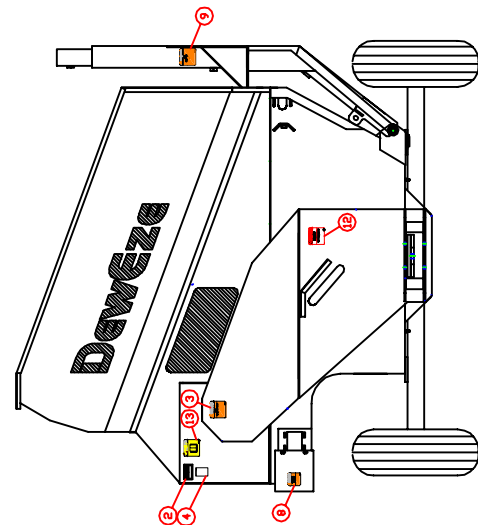
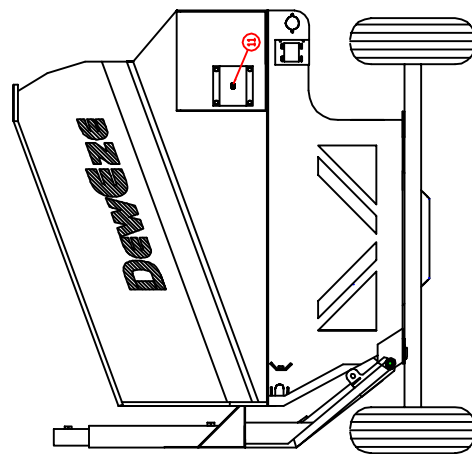
It is the responsibility of the owner and operator to be aware of safety hazards while operating this machine.

OPERATING INSTRUCTIONS

DECAL ASSEMBLY

Decals are provided to warn operators of dangers or provide information in the operation of equipment. It is the responsibility of the owner/operator to replace decals when they are missing or unreadable. New decals are available from your authorized dealer or manufacturer.

ITEM	PART #	DESCRIPTION
1.	400084	ROTO-SLICER DECAL
2.	100205	SERIAL NUMBER PLATE
3.	160001	MOVING PART HAZARD
4.	300002	FEMA DECAL
5.	160004	DANGER CHOPPER
6.	200011	SILVER PINSTRIPE
7.	200105	DEWEZE/SOLID SILVER
8.	160002	GUARD REMOVED
9.	160003	OVERHEAD HAZARD
10.	160007	GREASE EVERY 10HR.
11.	160008	GREASE EVERY 40HR.
12.	160009	ROTATING DRIVE LINE
13.	160010	READ OPERATORS MANUAL
14.	160006	WARNING HIGH PRESSURE



600056

OPERATING INSTRUCTIONS

LOADING BALE

Loading Bale with Fork

Make sure safety bar has been unhooked. Lower fork to ground level and drive forward until bale is at back of fork.

Raise fork until bale rolls onto table. A second bale can be retrieved at this time. Leave second bale on fork until bale on table is processed.

Do not load two bales on table at the same time.

CAUTION

While loading bales move slats only if necessary to prevent pinching hay between fork and slat roller.

PROCESSING THE BALE

Set feeder chain Flow Control Valve on 2 for initial startup. Make sure bale is not against rotor before engaging PTO. If bale is against rotor, reverse the tractor's hydraulic circuit that operates the feeder chain and move bale away from the rotor.

Engage PTO and increase tractor's RPM to 1000-1300 RPM. This is a good start-up speed until you become familiar with controls and operation of Roto-Slicer.

As bale is fed into the rotor, adjust the Flow Control Valve setting for the feeder chain to match your type of hay and your tractor's power. Higher number settings will increase the speed of the feeder chain. Adjust one number at a time. If tractor engine is pulling down excessively, lower the setting on valve, which will decrease the speed of the feeder chain. Settings will vary with hay types, tractor horsepower, and personal preferences. Make small adjustments to see how this will effect operation.

CAUTION

NEVER STAND TO THE SIDE OF ROTO-SLICER WHEN PROCESSING. ROTOR CAN THROW OBJECTS CAUSING SERIOUS INJURY.

HITCH ALIGNMENT

FIGURE 1



FIGURE 2



FIGURE 3



HITCH ALIGNMENT

FIGURE 1

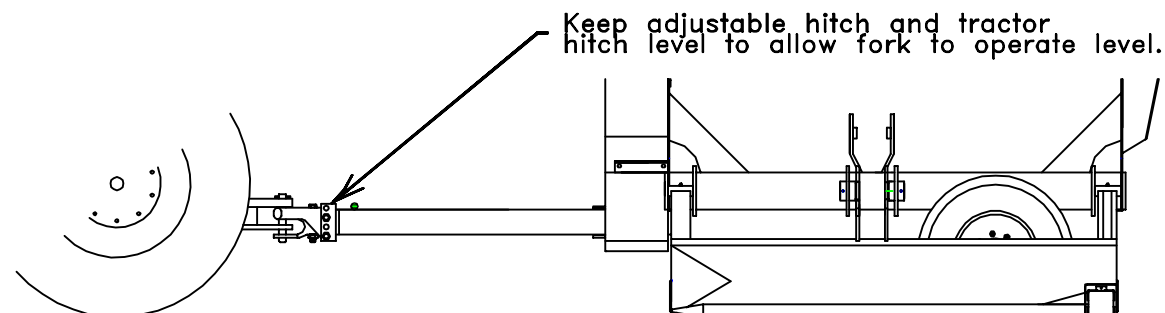
1. FEED POSTION-LEFT (Allows greater clearance between tractor and bunk.)

FIGURE 2

2. FEED POSTION-RIGHT (Allows greater clearance between tractor and bale during loading.)

FIGURE 3

3. STRAIGHT AHEAD (Feed postion for maximum PTO life.)



SERVICE & MAINTENANCE

SLAT CHAIN TENSIONING

FIGURE 1

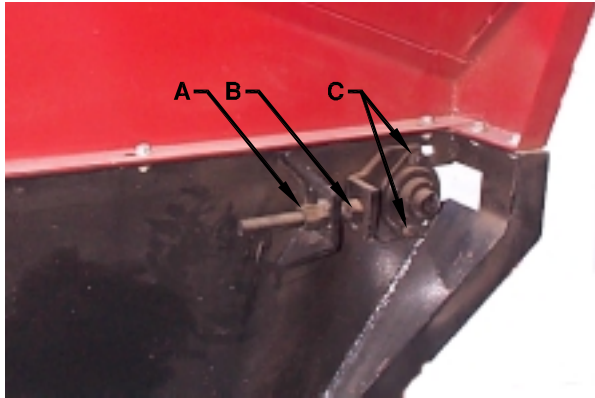
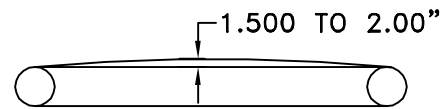


FIGURE 2



1. Loosen lock nuts (A), loosen bearing bolts (C) slightly. SEE FIG 1
2. Turn adjusting bolt (B) clockwise to tighten feeder chain. Adjust both sides **EQUALLY**.
3. Chain is properly tight when there is 1 1/2" to 2" of slack under middle of chain. SEE FIG 2
4. After chain is properly tightened, tighten bearing bolts (C) and then tighten lock nuts (A) on adjusting bolt, both sides.

BELT TENSIONING

FIGURE 3

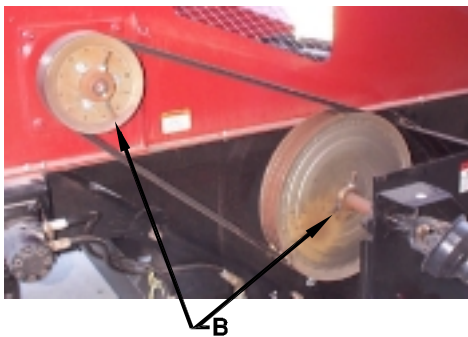
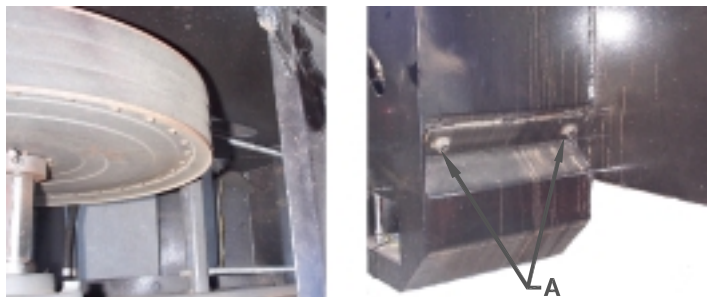


FIGURE 4



1. To tighten belt turn Adjusting Screws (A) clockwise until belt becomes tight. Adjust screws equally on both side there should be only 3/4" of deflection in belt.
2. Keep pulley alignment straight so pulleys will run true.
3. Lock tight set screws (B) so pulley will not migrate. SEE FIG 3

LUBRICATION & SERVICE



CAUTION: Never lubricate or service while machine is running.

SYMBOLS



Lubricate with an SAE multipurpose type grease at hourly intervals indicated on the symbols.

LUBRICATE AS REQUIRED

Clevises, Linkages, Swing Hitch, and Other Moving Parts.

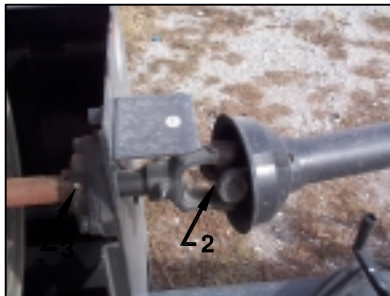
When lubricating the Roto-Slicer, make a practice of putting a few drops of SAE 30 oil on all clevises, linkages, swinging hitch, and other moving parts. This will make them work easier and prolong their life.

Chains



CAUTION: Never lubricate chains with the Roto-Slicer running.

Lubricate chains every 10 hours of operation with SAE 30 or heavier oil. Run chain for a few minutes before lubricating. A warm chain increases the penetration of oil between pins and bushings. Shut off tractor before lubricating chains.



10-HOUR OR DAILY LUBRICATION

1. Fork Bushings
2. PTO U-Joints



40-HOUR LUBRICATION

3. Ball Bearings (Rotor, PTO Drive, and Belt Non-Drive)

INSTALLATION OF OPTIONS & SET-UP PROCEDURES

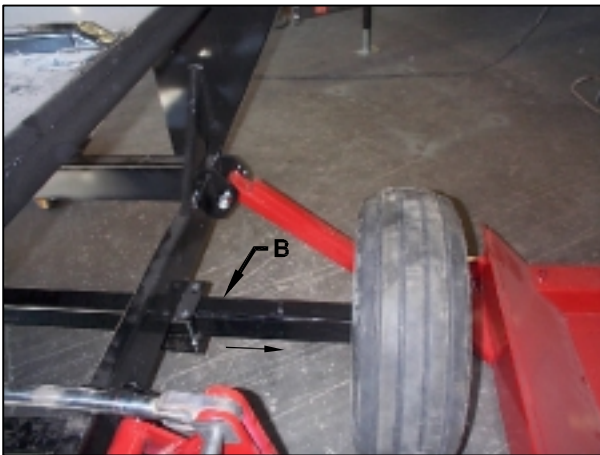
AXLE ALIGNMENT

FIGURE 1



1. Loosen the eight 1/2 x 6.00 (A) hanger bolts.

FIGURE 2



2. Slide axle (B) toward fork until stops hit on mounting plates
3. Retighten axle hanger bolts.

NOTICE:
FAILURE TO MOVE AXLE TO FEED POSITION CAUSES OPPOSITE SIDE OF MACHINE TO LIFT DURING LOADING PROCESS.

SAFETY BAR PLACEMENT



CAUTION:
WHEN TRANSPORTING THE ROTO-SLICER ALWAYS LATCH THE SAFETY BAR TO THE FORK.

INSTALLATION OF FORK

FIGURE 5

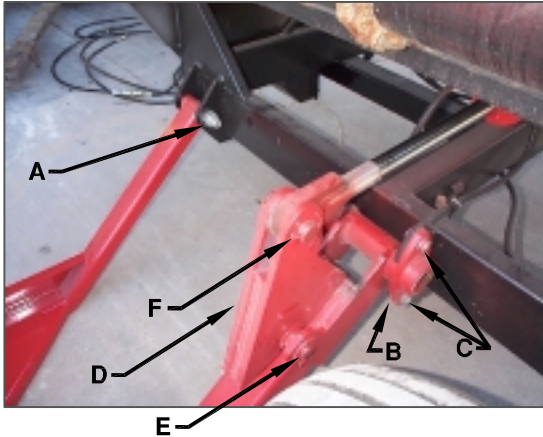


FIGURE 6



1. Move Fork (1) into position and fasten to frame at using two 1" x 7" (A) and two 1" lock nuts.
2. Slide Fork Mount (B) over tube in middle of fork. Fasten with four 1/2" x 1 1/2" bolts and 1/2" wiz nuts (C).
3. Install Lower Pin (E) into Fork Idler Lug (D) and fasten with cottor pin.
4. Lower Cylinder into Fork Idler Lug. Cylinder may have to be extended before holes will be aligned so Upper Pin (F) can be fastened with cottor pin.

ROTOR INSTALLATION

FIGURE 6

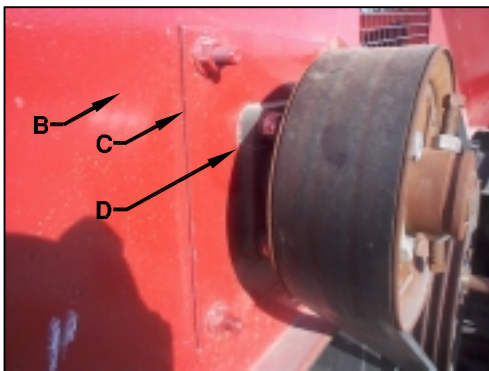
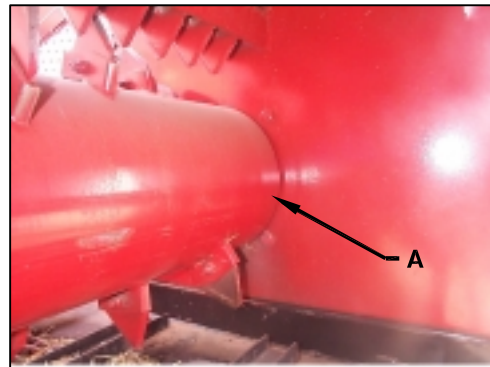


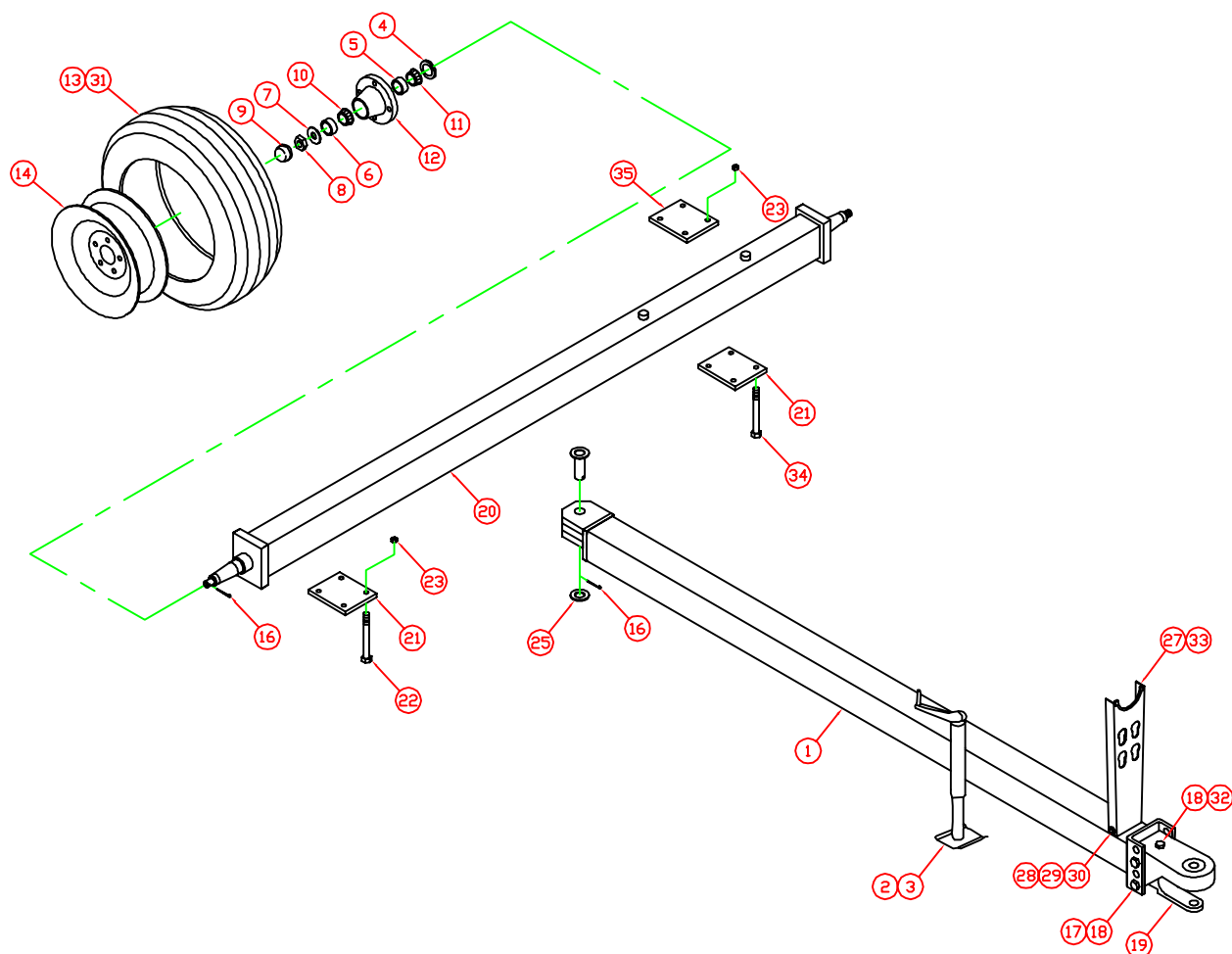
FIGURE 7



1. Push Rotor (A) to front opening of Bearing Support (B). Keep Rotor as parallel as possible.
2. Fasten Drive Hub to Rotor using four 1/2" x 2 1/2" bolts, and lock washers. Repeat on Non-Drive Hub.
3. Attach Bearing Mount (C) over Drive Hub fasten using four 1/2" x 1 1/4" bolts & whiz nuts. Repeat on Non-Drive Hub.
4. Install Bearing (D) to Bearing Mount (C) fasten using four 1/2" x 1 1/2" bolts & hex nuts. Repeat on Non-Drive Hub.

PARTS LISTINGS

TRAILER AND HITCH ASSEMBLY

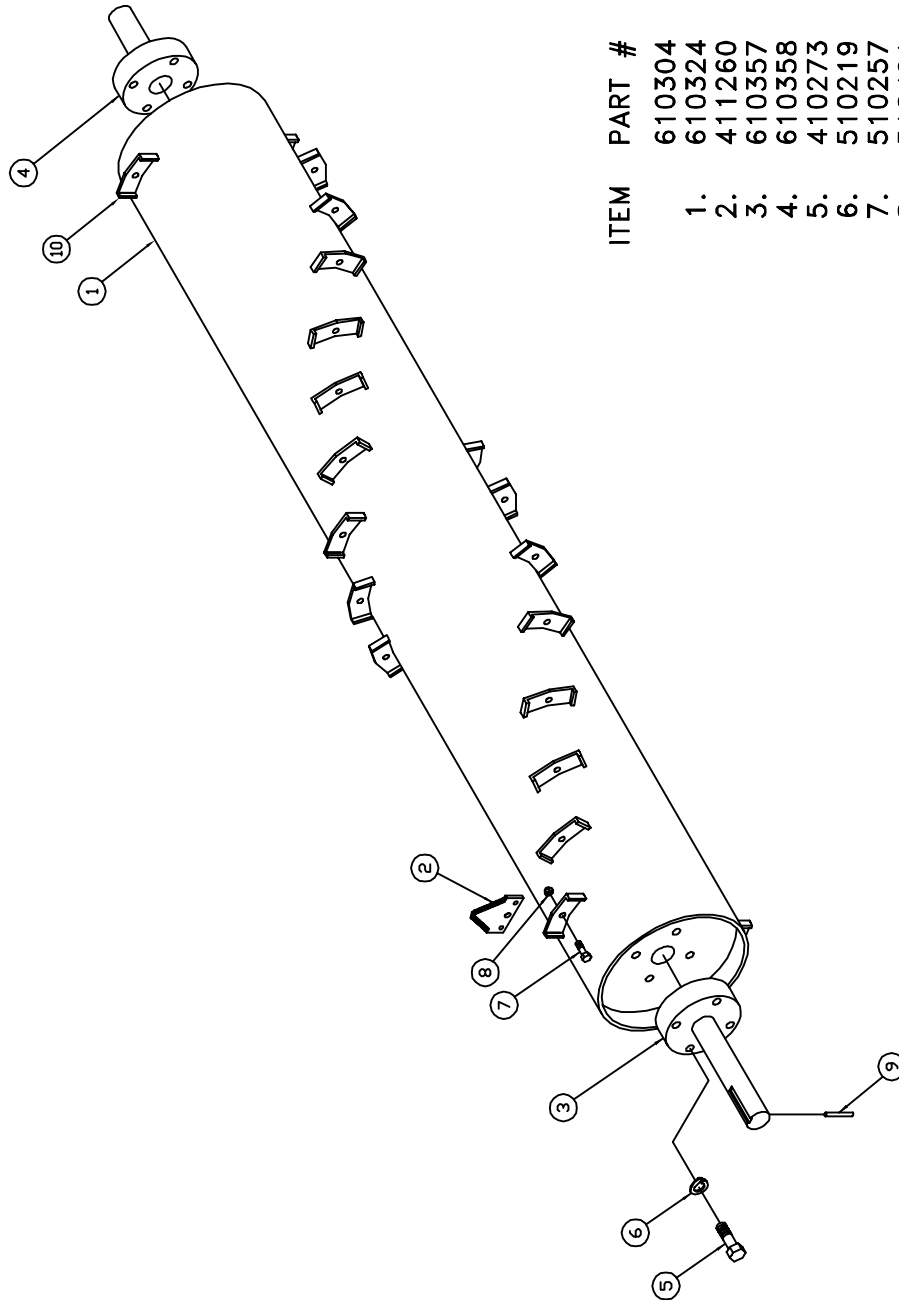


ITEM	PART #	DESCRIPTION	ITEM	PART #	DESCRIPTION
1.	610522	HITCH WELD ASSEMBLY	18.	510944	3/4 LOCK NUT
2.	410048	JACK	19.	610423	PERFECT HITCH COMPLETE
3.	410275	WELD-ON BRACKET	20.	610421	TRAILER AXLE WELDMENT
* 4.	410105	BEARING SEAL	21.	610425	MOUNTING PLATES
* 5.	410114	INNER CUP	22.	710114	1/2 NC X 6.00 BOLT
* 6.	410115	OUTER CUP	23.	210350	1/2 WIZ NUT
7.	410109	WASHER .815 X 1.75	24.	610527	HITCH PIN
8.	410108	CASTLE NUT	25.	510173	WASHER
* 9.	410112	DUST CAP	26.	410424	1.00 LOCK NUT
* 10.	410103	OUTER BEARING	27.	610432	PTO HANGER
* 11.	410104	INNER BEARING	28.	710518	3/8 NC X 4.50 BOLT
12.	410111	HUB	29.	510491	3/8 LOCK NUT
13.	410113	TIRE	30.	410245	3/8 FLAT WASHER
14.	410107	WHEEL	31.	410651	INNER TUBE
15.	410106	LUG BOLTS	32.	310076	3/4 NC X 5.50 BOLT
16.	510175	COTTER PIN	33.	610464	EDGE MOLDING
17.	310204	3/4 NC X 6.00 BOLT	34.	110008	1/2 NC X 7.5
			35.	610582	SPACER, MOUNTING PLATE

* Hub Complete - 410511 includes

600066

ROTOR ASSEMBLY



ITEM	PART #	DESCRIPTION
1.	610304	ROTOR COMPLETE
2.	610324	ROTOR WELD ASSEMBLY
3.	411260	SICKLE SECTION (30)
4.	610357	DRIVE HUB (1)
5.	610358	NON-DRIVE HUB (1)
6.	410273	BOLT, 1/2 x 2.50 (8)
7.	510219	LOCK WASHER, 1/2 (8)
8.	510257	BOLT, 3/8 x 0.75 (30)
9.	510491	LOCK NUT, 3/8 (30)
10.	200150	ROLL PIN
	610330	SICKLE BRACKET

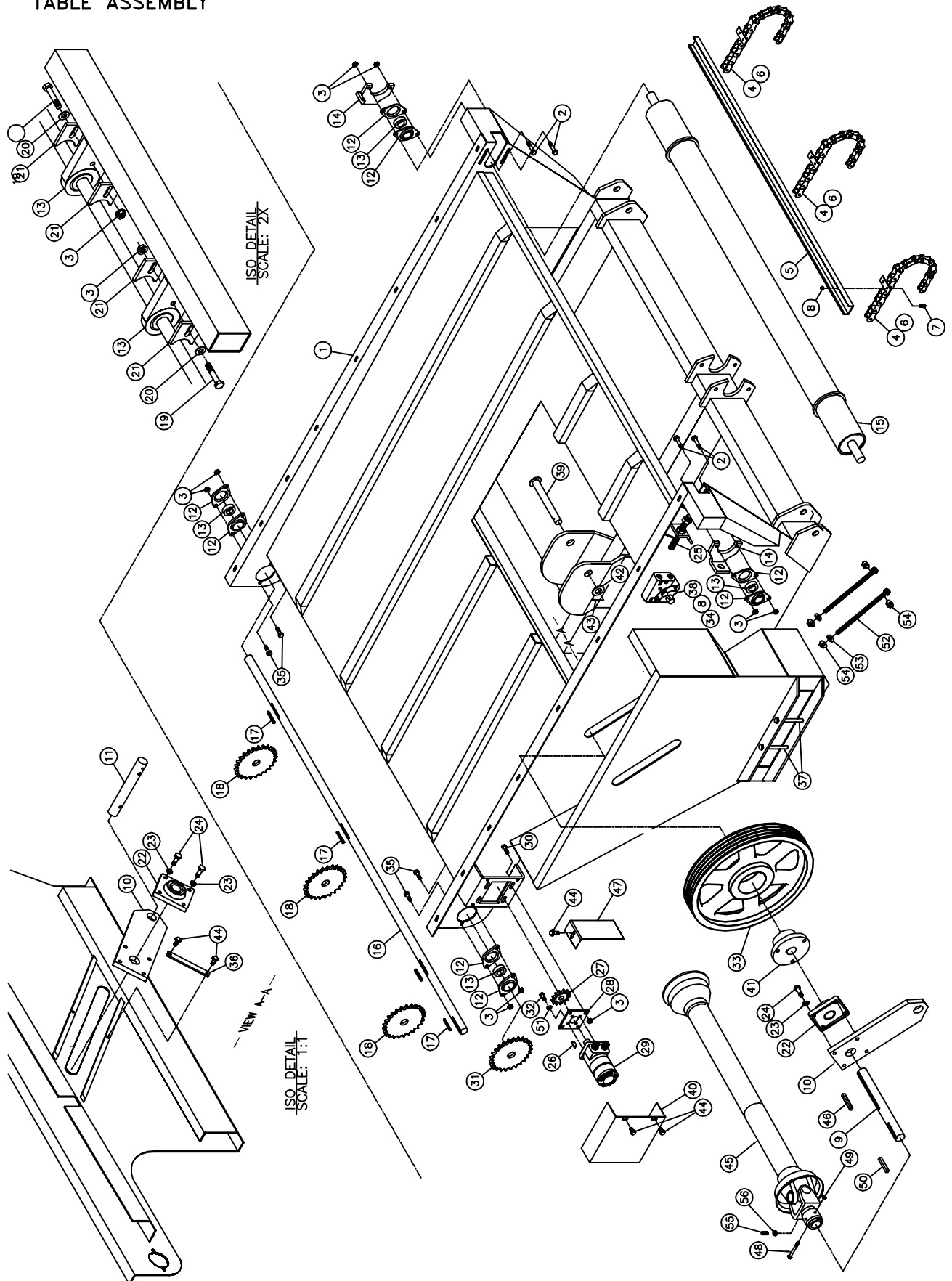
600067

TABLE ASSEMBLY

ITEM	PART #	DESCRIPTION			
1.	610290	TABLE WELD ASSEMBLY			
2.	110150	3/8 x 1.50, WIZ BOLT			3/8 x 1.25, CARRIAGE BOLT
3.	710631	3/8, WIZ NUT			SPROCKET/SLAT DRIVE
4.	411117	SLAT CHAIN			3/8 x 1.00, BOLT
5.	411135	SLAT			PULLEY, 3-GROOVE
6.	411170	CONNECTING LINK			FLOW CONTROL
7.	710611	1/4 x .75, BOLT			3/8 x 1.00, WIZ BOLT
8.	540076	1/4, LOCK NUT			TENSIONER STRAP
9.	610554	PTO/DRIVE SHAFT			1/2 x 5.50, BOLT
10.	610577	TENSIONER SUPPORT			1/4 x 2.50, BOLT
11.	610545	TENSIONER PIN			CYLINDER PIN
12.	410233	FLANGE			SLAT DRIVE SHIELD
13.	410232	BEARING			QD BUSHING, 1.50
14.	610333	BEARING ADJ. BRACKET			WASHER
15.	411171	ROLLER ASSEMBLY			COTTER PIN
16.	411137	SHAFT/SLAT DRIVE			3/8 x 0.75, WIZ BOLT
17.	410238	KEY, 1/4 x 2.25			PTO DRIVE SHAFT, 540
18.	440070	SPROCKET/SLAT DRIVE			PTO DRIVE SHAFT, 540CV
19.	410267	3/8 x 2.00, BOLT			PTO DRIVE SHAFT, 1000CV
20.	510365	3/8, FLAT WASHER			(FOR BALEAGE OPTION)
21.	411294	BEARING RETAINER			KEY, 3/8 x 3.00
22.	410851	FLANGE BEARING, 1.50			SPROCKET SHIELD
23.	510219	1/2, LOCK WASHER			5/16 x 3.50, BOLT
24.	510218	1/2 x 1.50, BOLT			5/16, LOCK NUT
25.	610332	BEARING ADJ. ASSEMBLY			KEY, 3/8 x 2.75
26.	410321	WOODRUFF KEY			3/8, LOCK WASHER
27.	410375	SPROCKET/SLAT DRIVE			TENSIONER WELDMENT
28.	410365	MOTOR MOUNT			WASHER, 7/16
29.	420130	MOTOR, SLAT DRIVE ASSEMBLY			WIZ NUT, 1/2
					SET SCREW, 3/8 x 1.00
					JAM NUT, 3/8
30.	410272				
31.	340007				
32.	510063				
33.	640035				
34.	420048				
35.	510453				
36.	610555				
37.	410354				
38.	410526				
39.	610345				
40.	411140				
41.	440009				
42.	510173				
43.	510462				
44.	510401				
45.	640034				
	640048				
	440060				
46.	411118				
47.	610578				
48.	510614				
49.	500202				
50.	610359				
51.	510271				
52.	610581				
53.	510258				
54.	210350				
55.	110235				
56.	110107				

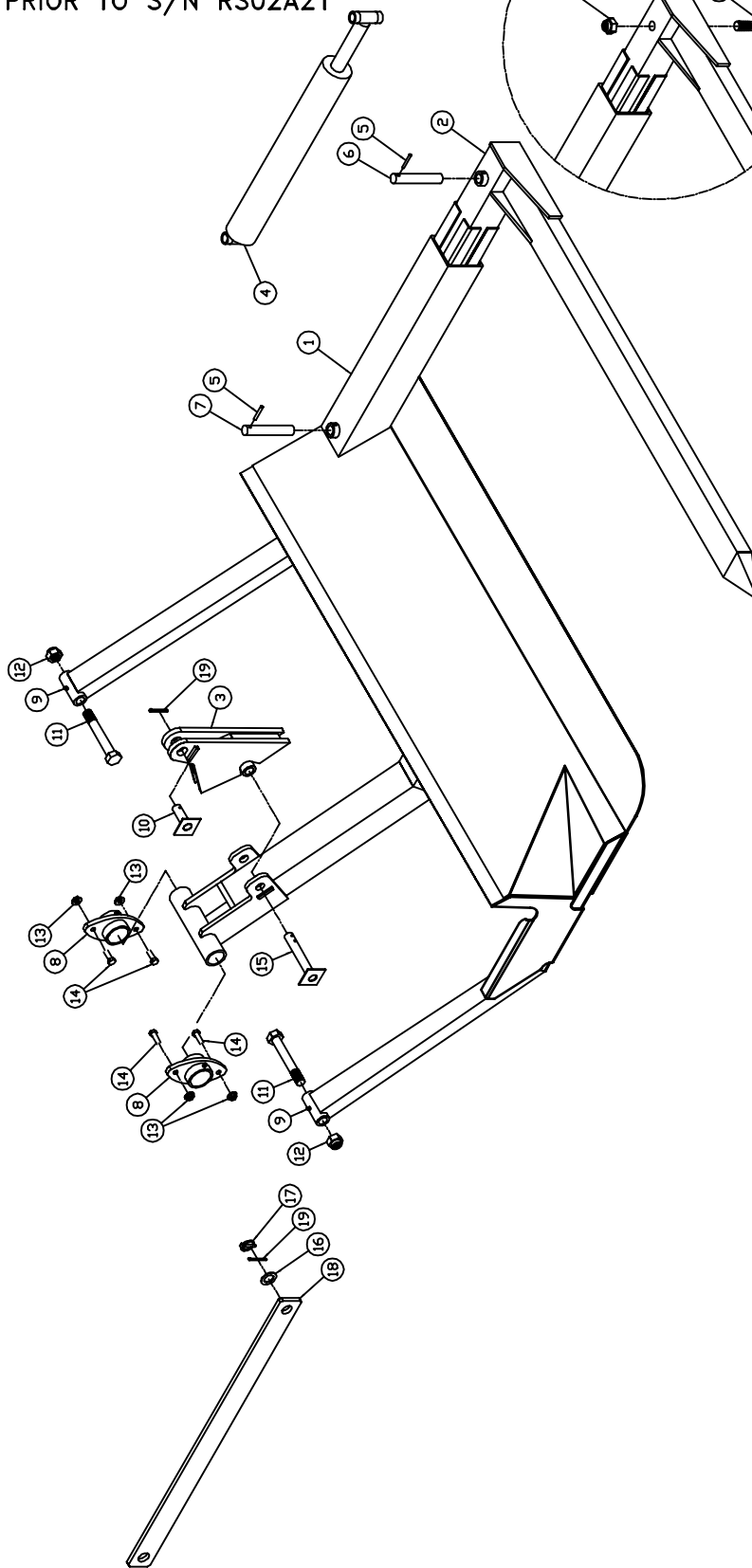
600068

TABLE ASSEMBLY



600069

FORK ASSEMBLY
PRIOR TO S/N RS02A21



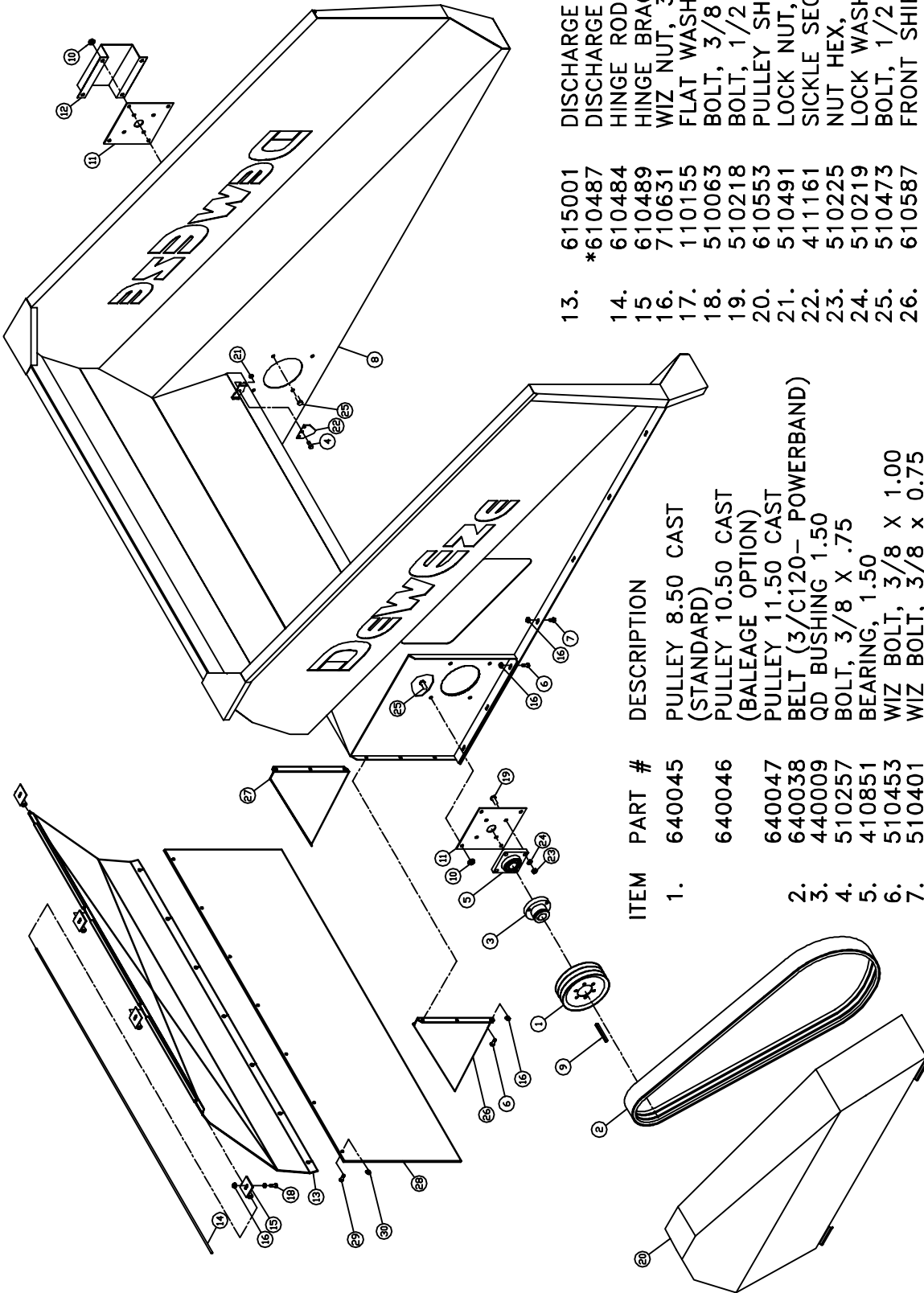
AFTER S/N RS02A10

ITEM	PART #	DESCRIPTION
1.	610292	FORK WELDMENT
2.	610544	FORK EXTENSION
3.	610573	IDLER LUG
4.	620012	FORK EXTENSION CYLINDER
5.	200150	ROLL PIN
6.	610409	PIN ROD END
7.	610411	PIN BASE END
8.	610535	FORK MOUNT WELDMENT
9.	510174	ZERK
10.	610397	LIFT PIN/FORK

11.	200021	1.00 x 7.00, BOLT
12.	410424	1.00, LOCK NUT
13.	210350	1/2, WIZ NUT
14.	510218	1/2 x 1.50, BOLT
15.	610576	PIN/BOTTOM ARM
16.	510173	WASHER
17.	210006	LYNCH PIN
18.	610525	SAFETY BAR
19.	510175	COTTER PIN
20.	111006	1-8 X 5.50 BOLT

600070

PULLEY DRIVE ASSEMBLY



13.	615001	DISCHARGE SHIELD LONG
14.	*610487	DISCHARGE SHIELD SHORT
15.	610484	HINGE ROD
16.	610489	HINGE BRACKET
17.	710631	WIZ NUT, 3/8
18.	110155	FLAT WASHER, 3/8
19.	510063	BOLT, 3/8 x 1.00
20.	510218	BOLT, 1/2 x 1.50
21.	610553	PULLEY SHIELD
22.	510491	LOCK NUT, 3/8
23.	411161	SICKLE SECTION
24.	510225	NUT HEX, 1/2
25.	510219	LOCK WASHER, 1/2
26.	510473	BOLT, 1/2 x 1.25
27.	610587	FRONT SHIELD SUPPORT
28.	610588	BACK SHIELD SUPPORT
29.	610589	RUBBER BELD SHIELD
30.	410460	BOLT 5/16 X 1 ELEVATOR
	510096	NUT, 5/16-18 WHIZ

* PRIOR TO S/N RS02A21

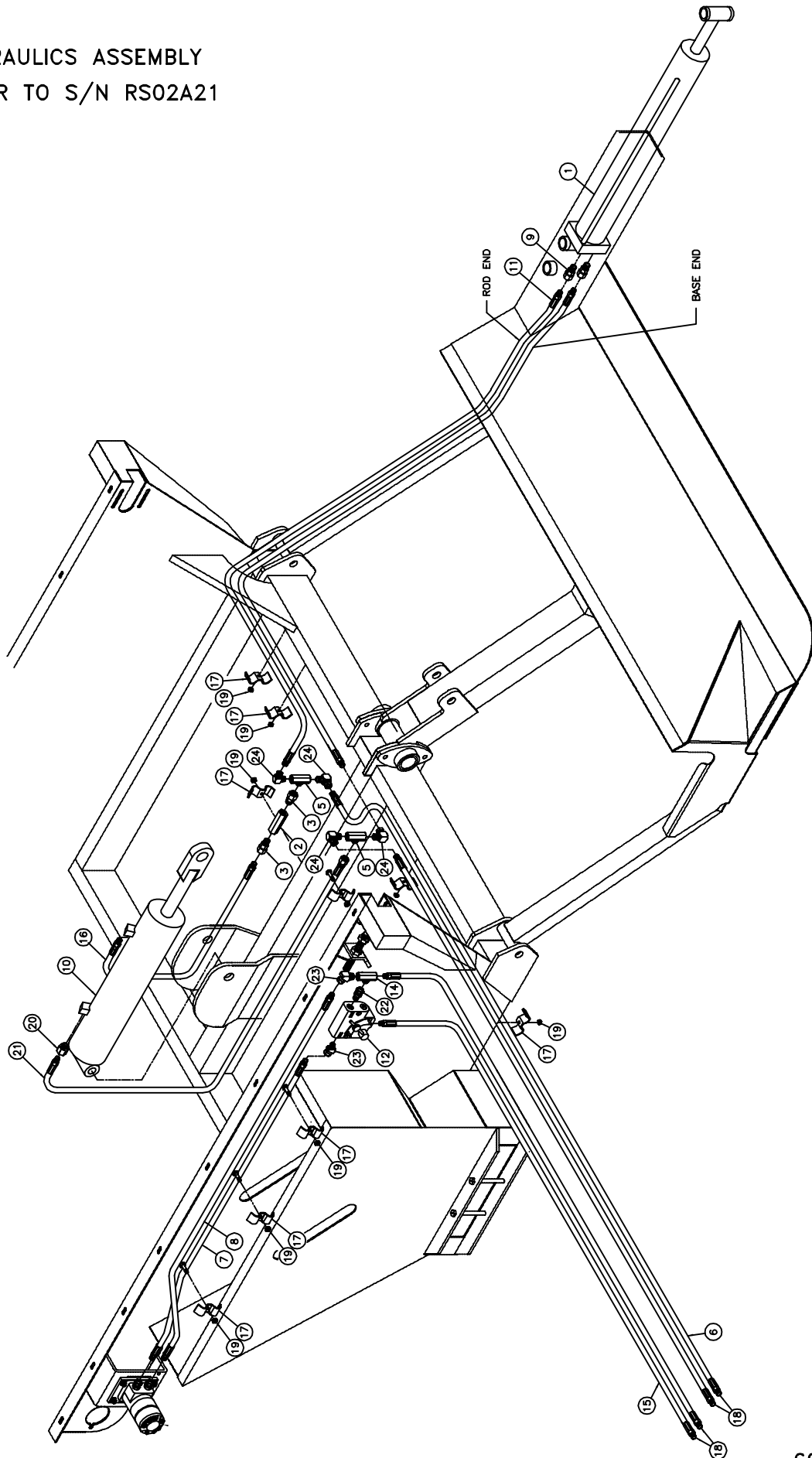
ITEM	PART #	DESCRIPTION
1.	640045	PULLEY 8.50 CAST (STANDARD)
	640046	PULLEY 10.50 CAST (BALEAGE OPTION)
2.	640047	PULLEY 11.50 CAST
3.	640038	BELT (3/C120- POWERBAND)
4.	440009	QD BUSHING 1.50
5.	510257	BOLT, 3/8 X .75
6.	410851	BEARING, 1.50
7.	510453	WIZ BOLT, 3/8 X 1.00
8.	510401	WIZ BOLT, 3/8 X 0.75
9.	610291	UPPER SHIELD WELDMENT
10.	610558	KEY, 3/8 x 4.00
11.	210350	WIZ NUT, 1/2
12.	610342	BEARING MOUNT
	610459	BEARING SHIELD/ROTOR

600071

HYDRAULICS ASSEMBLY
PRIOR TO S/N RS02A21

ITEM	PART #	DESCRIPTION	ITEM	PART #	DESCRIPTION
* 1.	620012	EXTENDIBLE ARM CYLINDER	14.	420037	ADAPTER 8FP-8FP-8MP
2.	420030	SEQUENCE VALVE	15.	620018	HOSE ASSEMBLY
3.	720078	ADAPTER 8MB-6FPX	16.	620019	HOSE ASSEMBLY
5.	420025	TEE 6FP-6FP-6MP	17.	410101	HOSE CLAMP
6.	620014	HOSE ASSEMBLY	18.	420005	MALE PIONEER COUPLER
7.	620015	HOSE ASSEMBLY	19.	510491	3/8 LOCK NUT
8.	620016	HOSE ASSEMBLY	20.	220509	RESTRICTER 8MP-8FPX
9.	220521	ADAPTER 4MB-4FJX	21.	620020	HOSE ASSEMBLY
* 10.	220452	LIFT CYLINDER	22.	320044	ADAPTER 8MP-8FPX
11.	620017	HOSE ASSEMBLY	23.	320040	ADAPTER 8MP-8FPX45
12.	420048	FLOW CONTROL	24.	220108	ADAPTER 6MP-6FPX90
* SEAL KITS					
				1	- 220499
				10	- 220464

HYDRAULICS ASSEMBLY
PRIOR TO S/N RS02A21



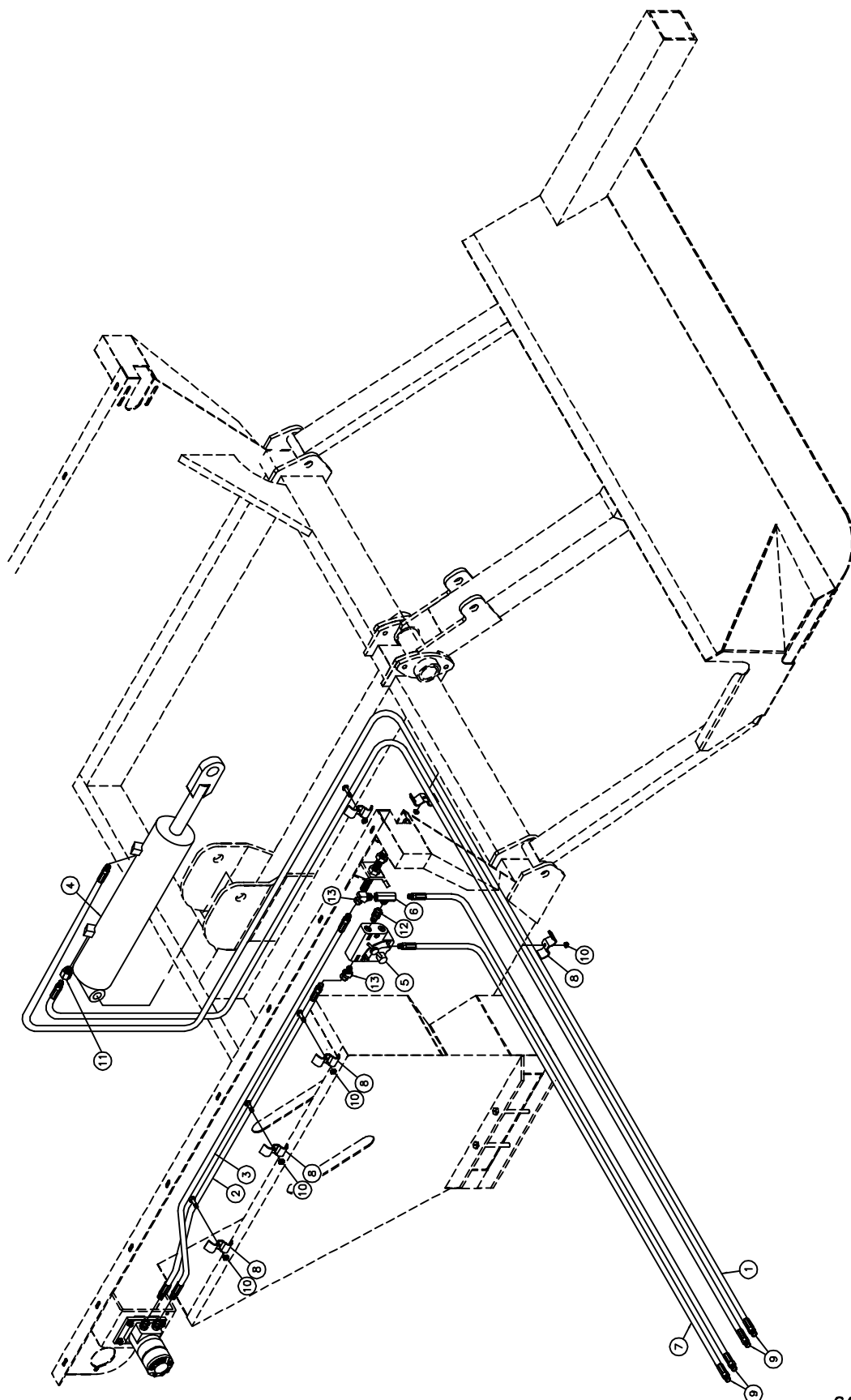
600073

HYDRAULICS ASSEMBLY
AFTER S/N RS02A21

ITEM	PART #	DESCRIPTION	ITEM	PART #	DESCRIPTION
1.	620014	HOSE ASSEMBLY	8.	410101	HOSE CLAMP
2.	620015	HOSE ASSEMBLY	9.	420005	MALE PIONEER COUPLER
3.	620016	HOSE ASSEMBLY	10.	510491	3/8 LOCK NUT
* 4.	220452	LIFT CYLINDER	11.	220509	RESTRICTER 6MB-6FB, .125
5.	420048	FLOW CONTROL	12.	320044	ADAPTER 8MP-8FPX
6.	420037	ADAPTER 8FP-8FP-8MP	13.	320040	ADAPTER 8MP-8FPX45
7.	620018	HOSE ASSEMBLY	* SEAL KIT	4 - 220464	

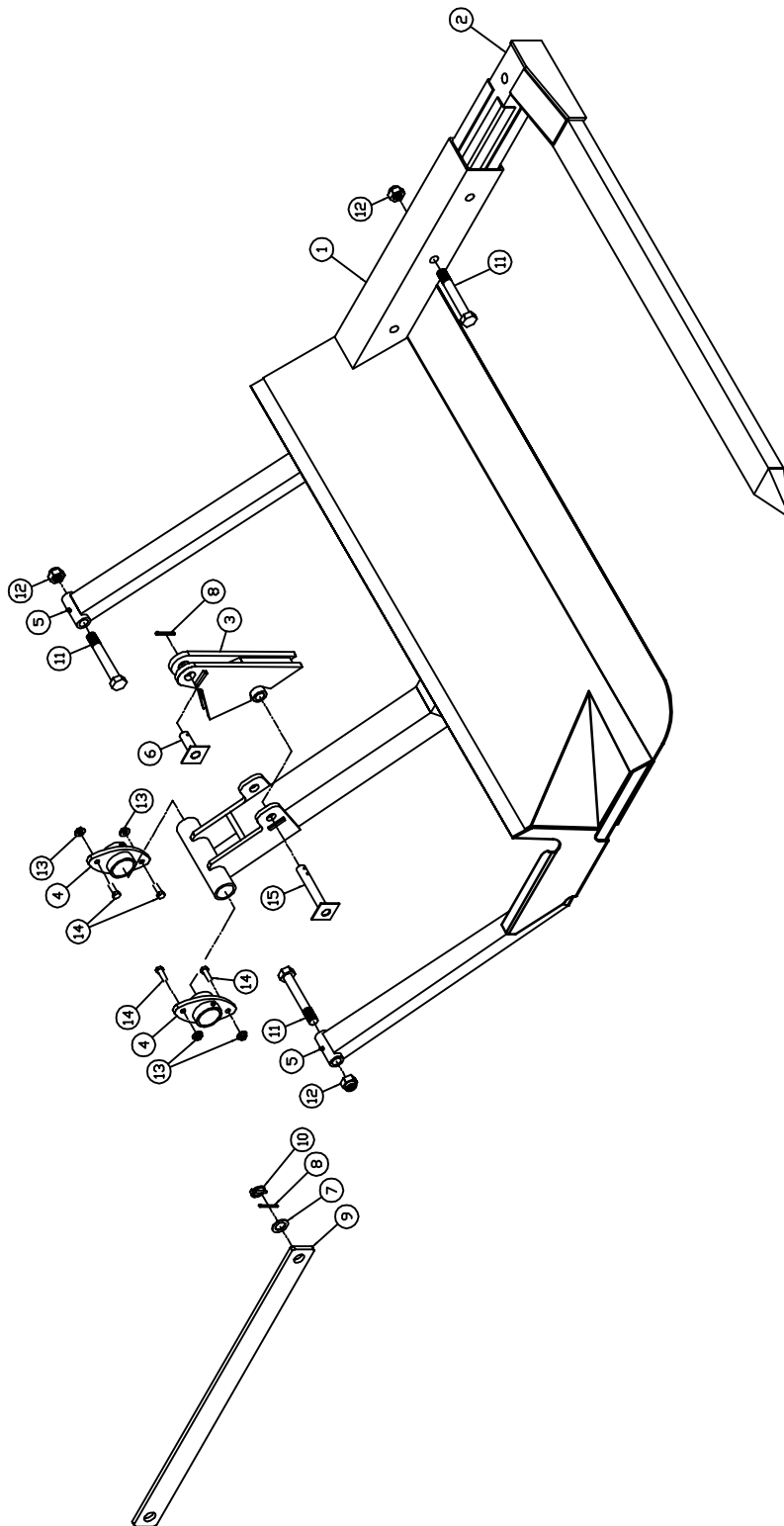
600074

HYDRAULICS ASSEMBLY
AFTER S/N RS02A21



600075

FORK ASSEMBLY
AFTER S/N RS02A21



ITEM	PART #	DESCRIPTION
1.	610292	FORK WELDMENT
2.	610544	FORK EXTENSION
3.	610573	IDLER LUG
4.	610535	FORK MOUNT WELDMENT
5.	510174	ZERK
6.	610397	LIFT PIN/FORK
7.	510173	WASHER
8.	510175	COTTER PIN
9.	610525	SAFETY BAR
10.	210006	LYNCH PIN
11.	200021	1.00 x 7.00, BOLT
12.	410424	1.00, LOCK NUT
13.	210350	1/2, WIZ NUT
14.	510218	1/2 x 1.50, BOLT
15.	610576	PIN/BOTTOM ARM

600076

FORK EXTENSION OPTION
 KIT # 623001
 AFTER S/N RS02A21

DESCRIPTION
 FORK EXTENSION CYLINDER
 BOLT, 1-8 X 5.50
 1.00, LOCK NUT
 ADAPTER, 4MB-4FPX
 CLAMP, HOSE 4.00"
 HOSE CLAMP
 3/8 LOCK NUT
 HOSE ASSY.
 MALE PIONEER COUPLER

PART#
 620012
 111006
 410424
 220521
 500224
 410101
 510491
 620023
 420005

ITEM
 1.
 2.
 3.
 4.
 5.
 6.
 7.
 8.
 9.

